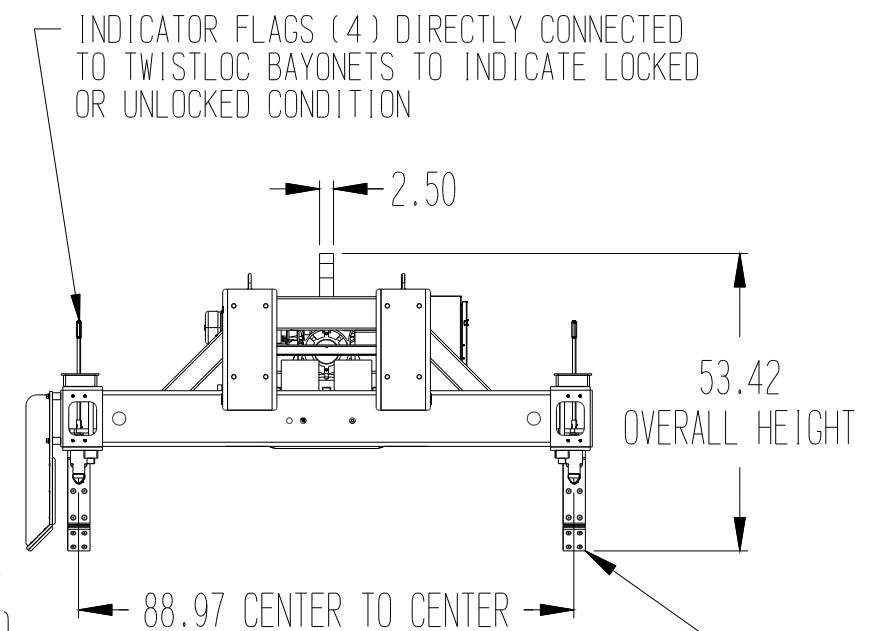
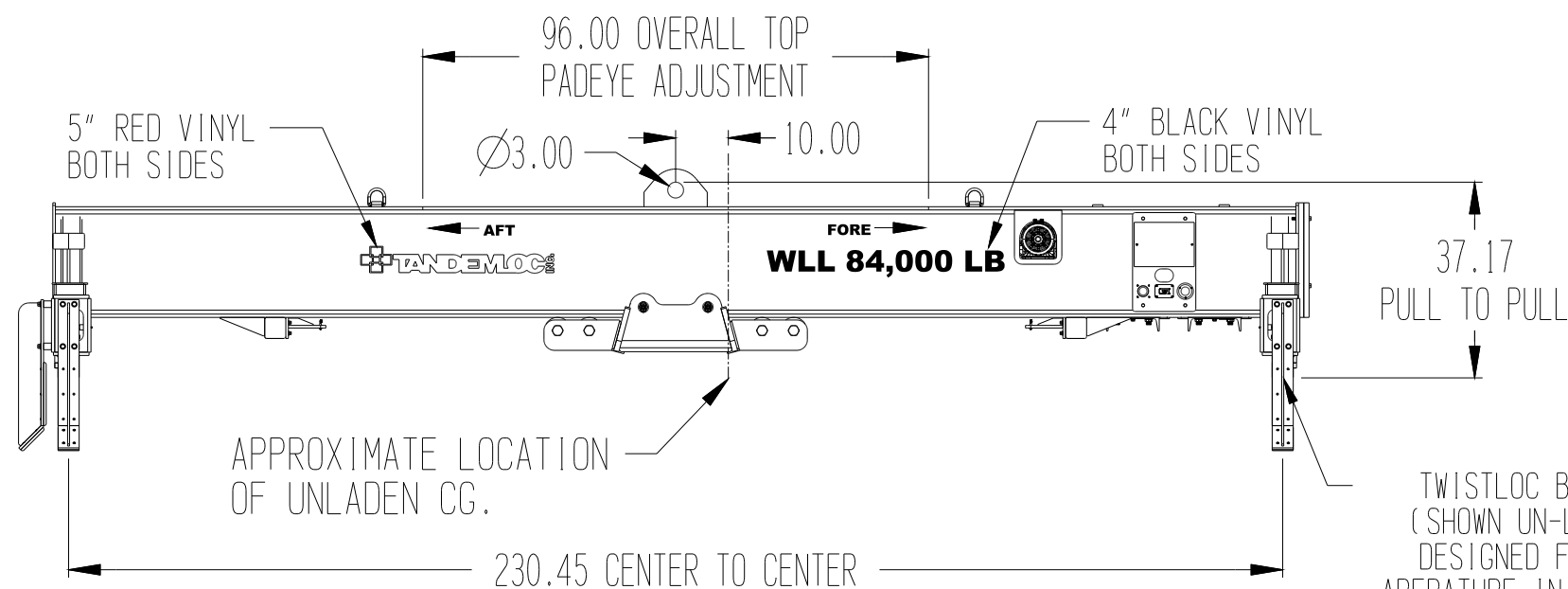
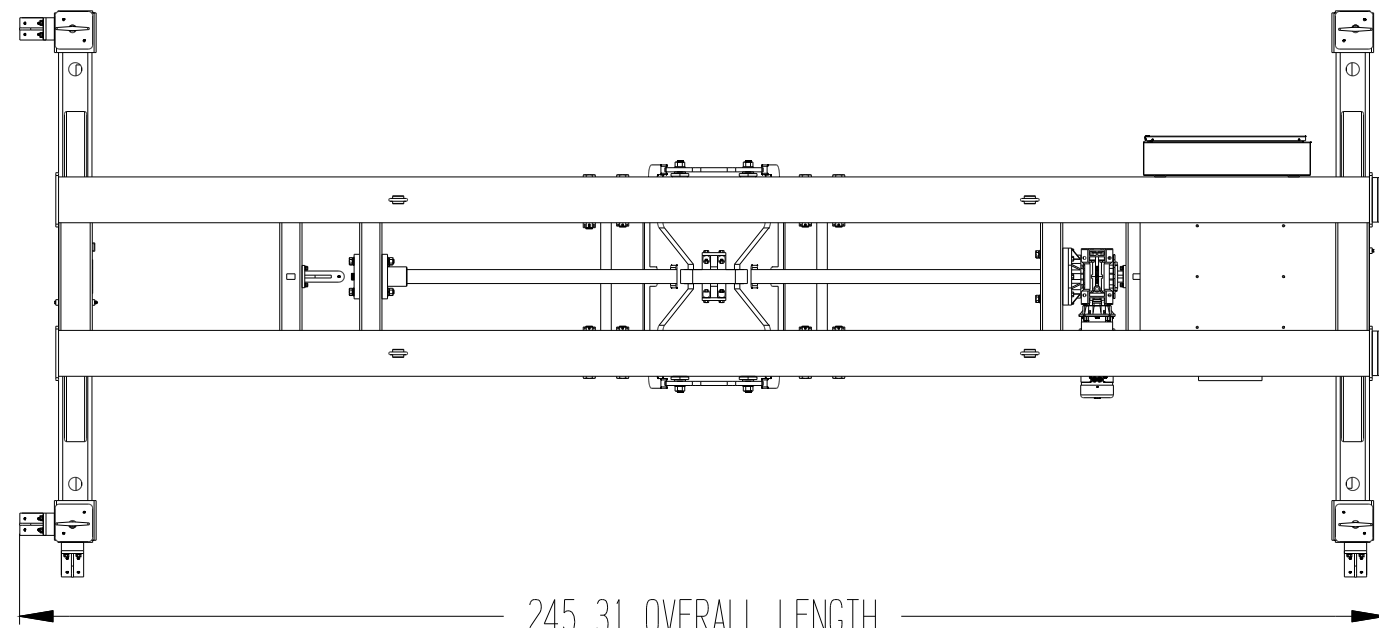


REVISIONS			
REV	DESCRIPTION	DATE	APPROVED
A	REDESIGNED FOR CG OFFSET AND FASTER TRAVEL SPEED	10-11-21	DAH
B	SWAPPED FORE AND AFT, REMOVED TRAVEL SPEED NOTE FROM SHEET 3	10-12-21	DAH
C	RE-POSITIONED ONBOARD CHARGER, ADDED 2ND ENCLOSURE, RE-LOCATED ENCLOSURES TO BACK SIDE OF LIFTER, ADDED DETAIL FOR BATTERY SWITCH AND CHARGER PORT, ADDED LED INDICATOR LIGHT DETAIL, OVERALL LENGTH WAS 245.31, OVERALL WIDTH WAS 102.22, CALCULATED WEIGHT WAS 6,250 LB.	11-19-21	DC
D	WLL 84,000 LB. WAS WLL 80,000 LB.	07-18-23	DAH
E	UPDATED TOP PADEYE AND ELECTRIC LOCATION	09-08-23	DAH



GUIDES ALL HAVE BOLT ON 1/2" THICK UHMW-PE PADS COVERING CONTACT AREAS WITH CONTAINER

NOTES:
 1. PART NO.: AX17A00-00A-PA, 20' ISO LOAD LEVELING ELECTROLOC LIFT FRAME
 2. WLL: 84,000 LB.
 3. PROOF TESTED TO 125% (105,000 LB.) AND CERTIFIED
 4. STANDARD SPECIFICATION # EAD21000A APPLIES
 5. FINISH: SANDBLAST, PRIME AND PAINT SAFETY YELLOW
 6. CALCULATED WEIGHT: 6,084 LB.
 7. DESIGNED AND MANUFACTURED TO MEET OR EXCEED ASME B30.20 AND BTH-1, DESIGN CATEGORY B, SERVICE CLASS 0.

This document contains the proprietary information of Tandemloc, Inc. and your access and use shall be, and is at all times, pursuant to and limited by the Tandemloc, Inc. Terms of Use. You shall not, and shall not encourage, assist, or authorize another party to copy, distribute, publicly display, modify, reverse engineer, decompile, or take any other action to reproduce this document or the information contained herein.

©2023 by Tandemloc, Inc.
 Dimensions are subject to manufacturing tolerance and change.

**** DO NOT SIGN IF CHANGES ARE REQUIRED ****

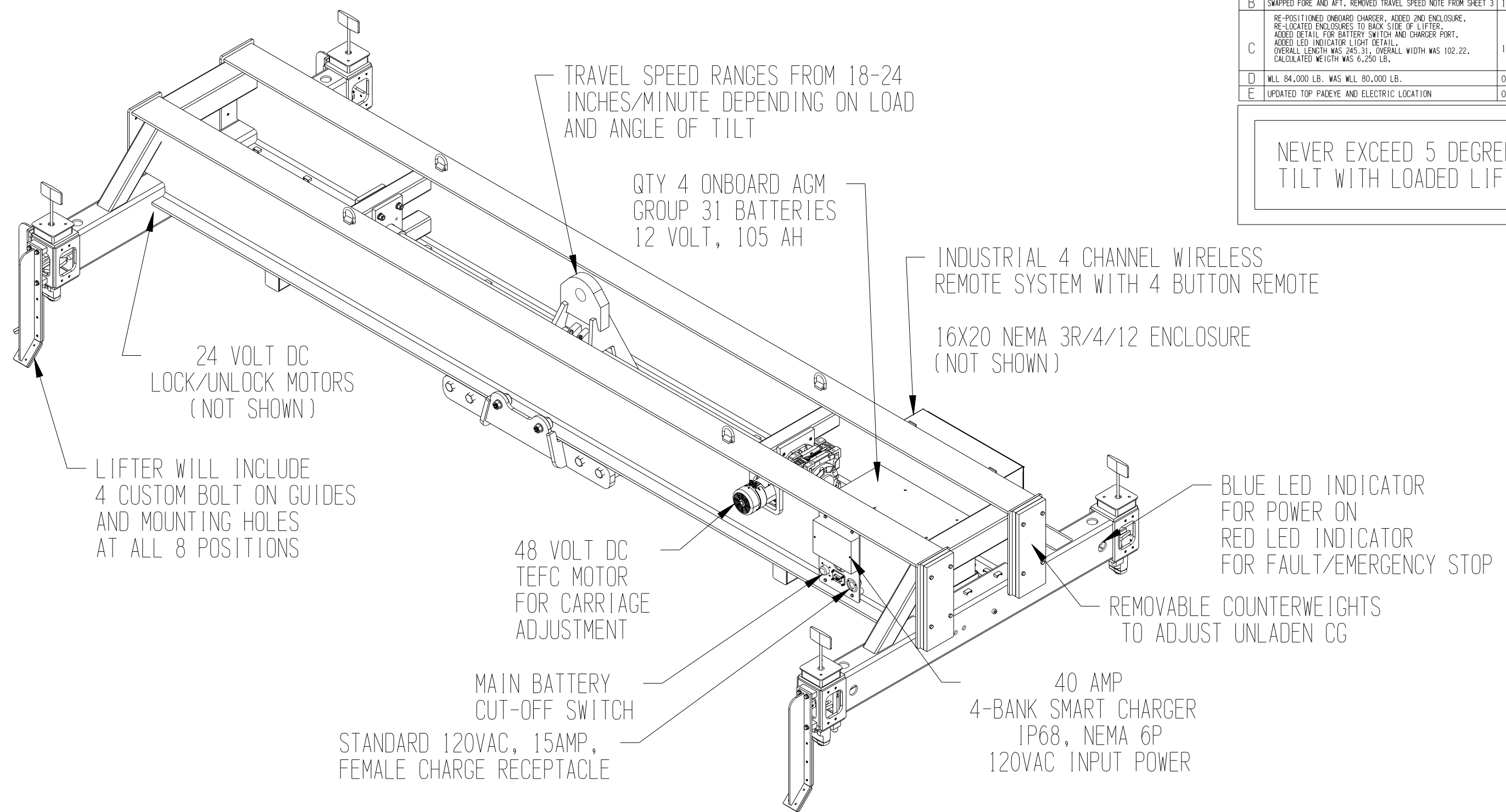
CUSTOMER APPROVAL: _____

DATE: _____

<input checked="" type="checkbox"/> *X* DENOTES APPLICABLE DATA UNLESS OTHERWISE NOTED, DIMENSIONS ARE IN INCHES & TOLERANCES ARE: .XX ±.06 .XXX ±.0007 .XXX ±.03	<input type="checkbox"/> *X* DENOTES APPLICABLE DATA LOST WAX CASTING TOL. IS: 0 TO 4" ±.030 , 4.01" TO 7" ±.038" 7.01" TO 10.5" ±.045" OVER 10.5" ±.052"		
THIS DOCUMENT CONTAINS DATA WHICH IS EITHER PATENTED, PATENT PENDING OR IS THE PROPERTY OF TANDEMLOC, INC. DISCLOSURE, OR COPYING WITHOUT THE WRITTEN AUTHORIZATION OF TANDEMLOC, INC. IS EXPRESSLY PROHIBITED.		APPROVALS DRAWN: DAH DATE: 09-21-21	TITLE: AX17A00-00A-PA 20' ISO LOAD LEVELING ELECTROLOC FRAME SIZE: D CAGE CODE: 65059 DWG NO.: SAX17A00 REV.: E
SCALE:		CALC BY: REV BY: SHEET 1 OF 3	

REVISIONS			
REV	DESCRIPTION	DATE	APPROVED
A	REDESIGNED FOR CG OFFSET AND FASTER TRAVEL SPEED	10-11-21	DAH
B	SWAPPED FORE AND AFT, REMOVED TRAVEL SPEED NOTE FROM SHEET 3	10-12-21	DAH
C	RE-POSITIONED ONBOARD CHARGER, ADDED 2ND ENCLOSURE, RE-LOCATED ENCLOSURES TO BACK SIDE OF LIFTER, ADDED DETAIL FOR BATTERY SWITCH AND CHARGER PORT, ADDED LED INDICATOR LIGHT DETAIL, OVERALL LENGTH WAS 245.31, OVERALL WIDTH WAS 102.22, CALCULATED WEIGHT WAS 6,250 LB.	11-19-21	DC
D	WLL 84,000 LB. WAS WLL 80,000 LB.	07-18-23	DAH
E	UPDATED TOP PADEYE AND ELECTRIC LOCATION	09-08-23	DAH

NEVER EXCEED 5 DEGREES TILT WITH LOADED LIFTER



- NOTES:
1. PART NO.: AX17A00-00A-PA, 20' ISO LOAD LEVELING ELECTROLOC LIFT FRAME
 2. WLL: 84,000 LB.
 3. PROOF TESTED TO 125% (105,000 LB.) AND CERTIFIED
 4. STANDARD SPECIFICATION # EAD21000A APPLIES
 5. FINISH: SANDBLAST, PRIME AND PAINT SAFETY YELLOW
 6. CALCULATED WEIGHT: 6,084 LB.
 7. DESIGNED AND MANUFACTURED TO MEET OR EXCEED ASME B30.20 AND BTH-1, DESIGN CATEGORY B, SERVICE CLASS 0.

**** DO NOT SIGN IF CHANGES ARE REQUIRED ****

CUSTOMER APPROVAL: _____

DATE: _____

©2021 by Tandemloc, Inc.
Dimensions are subject to manufacturing tolerance and change.

<input checked="" type="checkbox"/> *X* DENOTES APPLICABLE DATA UNLESS OTHERWISE NOTED, DIMENSIONS ARE IN INCHES & TOLERANCES ARE: .XX ±.06 .XXX ±.0007 .XXX ±.03	<input type="checkbox"/> *X* DENOTES APPLICABLE DATA LOST WAX CASTING TOL. IS: 0 TO 4" ±.030 , 4.01" TO 7" ±.038" 7.01" TO 10.5" ±.045" OVER 10.5" ±.052"	TANDEMLOC TITLE: AX17A00-00A-PA 20' ISO LOAD LEVELING ELECTROLOC FRAME	
THIS DOCUMENT CONTAINS DATA WHICH IS EITHER PATENTED, PATENT PENDING OR IS THE PROPERTY OF TANDEMLOC, INC. DISCLOSURE, OR COPYING WITHOUT THE WRITTEN AUTHORIZATION OF TANDEMLOC, INC. IS EXPRESSLY PROHIBITED.		APPROVALS: DAH DATE: 09-21-21	SCALE: D
DRAWN: DAH		SIZE: 65059	DWG NO.: SAX17A00
SHEET 2 OF 3		REV.:	

REVISIONS			
REV	DESCRIPTION	DATE	APPROVED
A	REDESIGNED FOR CG OFFSET AND FASTER TRAVEL SPEED	10-11-21	DAH
B	SWAPPED FORE AND AFT, REMOVED TRAVEL SPEED NOTE FROM SHEET 3	10-12-21	DAH
C	RE-POSITIONED ONBOARD CHARGER, ADDED 2ND ENCLOSURE, RE-LOCATED ENCLOSURES TO BACK SIDE OF LIFTER, ADDED DETAIL FOR BATTERY SWITCH AND CHARGER PORT, ADDED LED INDICATOR LIGHT DETAIL, OVERALL LENGTH WAS 245.31, OVERALL WIDTH WAS 102.22, CALCULATED WEIGHT WAS 6,250 LB.	11-19-21	DC
D	WLL 84,000 LB. WAS WLL 80,000 LB.	07-18-23	DAH
E	UPDATED TOP PADEYE AND ELECTRIC LOCATION	09-08-23	DAH

ADDITIONAL NOTES:

1. REMOTE CONTROL HAS A RE-SETTABLE EMERGENCY STOP, POWER ON BUTTON AND 4 MOTOR CONTROL BUTTONS.
2. A MOMENTARY PRESS OF THE LOCK OR UNLOCK BUTTON WILL INITIATE A LOCK OR UNLOCK CYCLE. THE CYCLE COMPLETES EVEN IF THE BUTTON IS NOT HELD DOWN.
3. ONCE INITIATED, THE LOCK OR UNLOCK CYCLE SHOULD TAKE APPROXIMATELY 3 SECONDS TO COMPLETE.
4. TANDEMLOC ONBOARD LOGIC CONTROL WILL NOT ALLOW A LOCK OR UNLOCK CYCLE UNLESS THE LIFTER IS RESTING OR NEARLY RESTING ON THE CONTAINER. NEARLY RESTING IS DEFINED AS THE LIFTER IS SLIGHTLY LIFTED OFF OF THE CONTAINER, BUT THE TWISTLOC HAS NOT TAKEN UP THE LOAD YET. THIS MEANS THAT THE LOCK/UNLOCK CYCLE COULD BE INITIATED WHEN THERE IS A SMALL (0.375) GAP BETWEEN THE TWISTLOC HOUSING AND THE CONTAINER. THIS ALLOWS FOR TOLERANCE AND SOME MISALIGNMENT THAT IS COMMON IN THE CONTAINER HANDLING INDUSTRY.
5. PRESSING THE FORE OR AFT BUTTONS WILL MOVE THE CARRIAGE FOR AS LONG AS THE BUTTON IS HELD DOWN OR UNTIL THE CARRIAGE REACHES THE END OF ITS TRAVEL RANGE.
6. BEFORE LIFTING THE LOAD, THE CARRIAGE SHOULD BE POSITIONED OVER THE CG OF THE LOAD. MINOR ADJUSTMENTS CAN BE MADE WHILE LOADED, BUT REPEATED ADJUSTMENT OF THE CARRIAGE WHILE THE LIFT FRAME IS LOADED WILL RESULT IN SUBSTANTIALLY DECREASED BATTERY LIFE AND INCREASED WEAR AND TEAR ON THE DRIVETRAIN.
7. CARRIAGE ADJUSTMENT SHALL NEVER BE PERFORMED WHILE THE LIFT FRAME IS LOADED WITH AN OUT-OF-LEVEL CONDITION GREATER THAN 5 DEGREES FROM HORIZONTAL.
8. ONBOARD CHARGER REQUIRES 110-120VAC 50-60 HZ INPUT POWER VIA A STANDARD STRAIGHT FEMALE EXTENSION CORD INTERFACE.
9. GUARDING OF MOVING PARTS IS TYPICALLY NOT NECESSARY FOR CONTAINER LIFTING EQUIPMENT BECAUSE THE MOVING PARTS ARE OUT-OF-REACH WHEN THE LIFTER IS ON TOP OF A STANDARD ISO CONTAINER. TANDEMLOC RELIES ON THE CUSTOMER TO COMMUNICATE ANY SPECIAL GUARDING NEEDS THAT ARISE AS THE RESULT OF NON-TYPICAL USE.

NOTES:


1. PART NO.: AX17A00-00A-PA, 20' ISO LOAD LEVELING ELECTROLOC LIFT FRAME
2. WLL: 84,000 LB.
3. PROOF TESTED TO 125% (105,000 LB.) AND CERTIFIED
4. STANDARD SPECIFICATION # EAD21000A APPLIES
5. FINISH: SANDBLAST, PRIME AND PAINT SAFETY YELLOW
6. CALCULATED WEIGHT: 6,084 LB.
7. DESIGNED AND MANUFACTURED TO MEET OR EXCEED ASME B30.20 AND BTH-1, DESIGN CATEGORY B, SERVICE CLASS 0.

©2021 by Tandemloc, Inc.
Dimensions are subject to manufacturing tolerance and change.

**** DO NOT SIGN IF CHANGES ARE REQUIRED ****

CUSTOMER APPROVAL: _____

DATE: _____

<input checked="" type="checkbox"/> *X* DENOTES APPLICABLE DATA UNLESS OTHERWISE NOTED, DIMENSIONS ARE IN INCHES & TOLERANCES ARE: .XX ±.06 .XXXX ±.0007 .XXX ±.03		<input type="checkbox"/> *Y* DENOTES APPLICABLE DATA LOST WAX CASTING TOL. IS: 0 TO 4" ±.030 , 4.01" TO 7" ±.038" 7.01" TO 10.5" ±.045" OVER 10.5" ±.052"			
THIS DOCUMENT CONTAINS DATA WHICH IS EITHER PATENTED, PATENT PENDING OR IS THE PROPERTY OF TANDEMLOC, INC. DISCLOSURE, OR COPYING WITHOUT THE WRITTEN AUTHORIZATION OF TANDEMLOC, INC. IS EXPRESSLY PROHIBITED.				TITLE AX17A00-00A-PA 20' ISO LOAD LEVELING ELECTROLOC FRAME	
APPROVALS DRAWN: DAH		DATE 09-21-21		SIZE D	
SCALE		CAGE CODE 65059		DWG NO. SAX17A00	
REV.		REV.		REV.	
SHEET 3 OF 3		SHEET 3 OF 3		SHEET 3 OF 3	