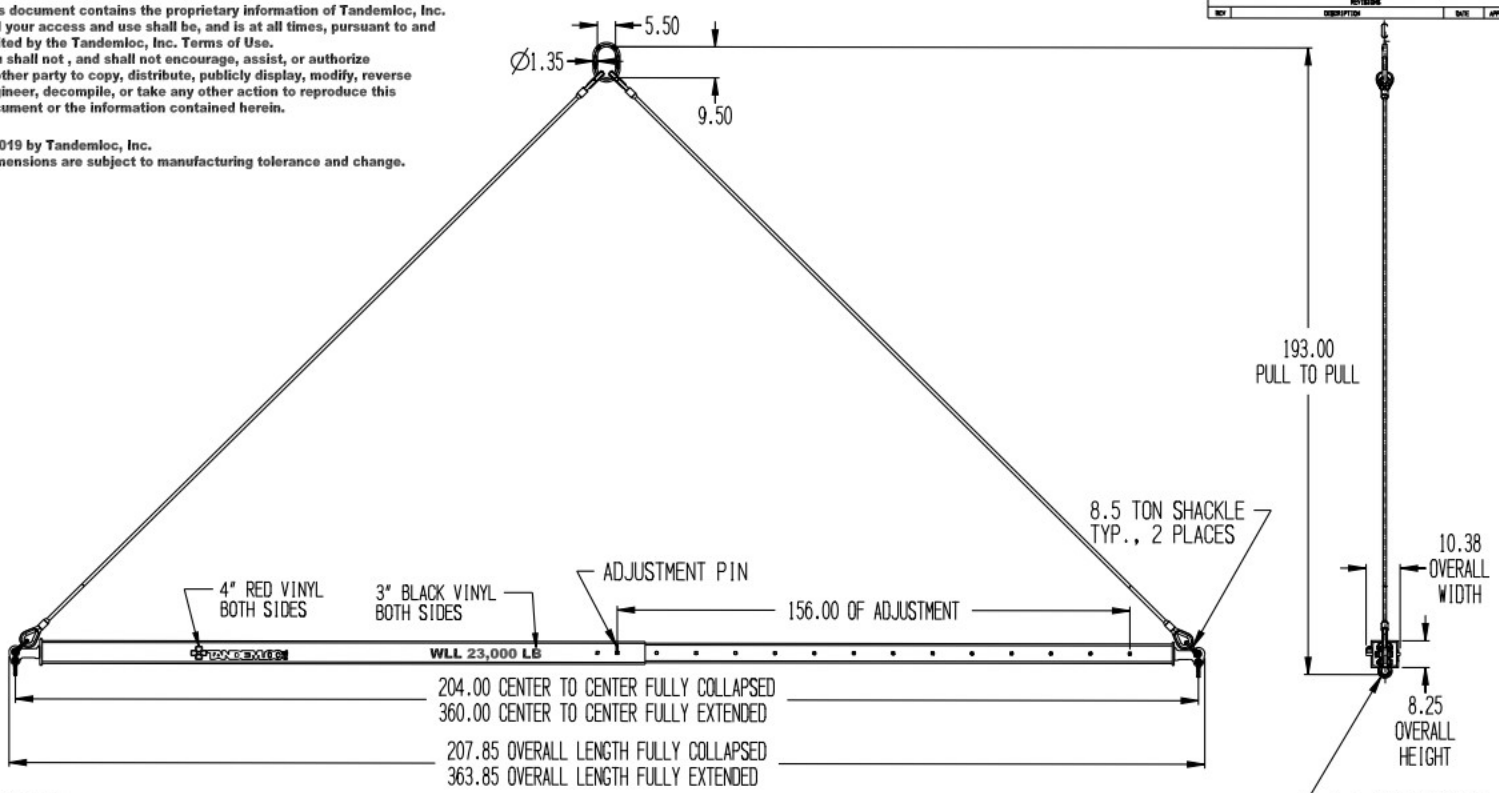


This document contains the proprietary information of Tandemloc, Inc. and your access and use shall be, and is at all times, pursuant to and limited by the Tandemloc, Inc. Terms of Use. You shall not, and shall not encourage, assist, or authorize another party to copy, distribute, publicly display, modify, reverse engineer, decompile, or take any other action to reproduce this document or the information contained herein.

©2019 by Tandemloc, Inc.
Dimensions are subject to manufacturing tolerance and change.



- NOTES:
- PART NO.: AT14A023-360-PA, 204"-360" TELESCOPIC SPREADER
AT14A023-360SPA, 204"-360" TELESCOPIC SPREADER WITH TOP SLING
 - WLL: 23,000 LB. @ 45° MINIMUM
 - PROOF TESTED TO 125% (28,750 LB.) AND CERTIFIED
 - STANDARD SPECIFICATION # EAD21000A APPLIES
 - FINISH: SANDBLAST AND PRIME AND PAINT YELLOW
 - CALCULATED WEIGHT: 995 LB. SPREADER WITH SLING: 1,103 LB.
 - DESIGNED AND MANUFACTURED TO MEET OR EXCEED ASME B30.20 AND BTH-1, DESIGN CATEGORY B, SERVICE CLASS 0.

** DO NOT SIGN IF CHANGES ARE REQUIRED **
CUSTOMER APPROVAL: _____
DATE: _____

<small>UNLESS OTHERWISE SPECIFIED, DIMENSIONS ARE IN INCHES & TOLERANCES ARE: .25 0.00 0.003 .001 0.003 .001 0.003</small>	<small>UNLESS OTHERWISE SPECIFIED, DIMENSIONS ARE IN INCHES & TOLERANCES ARE: 0 TO 4" ±.005, 4.00" TO 7" ±.007 7.00" TO 20.00" ±.007 OVER 20.00" ±.007</small>	
<small>THIS DRAWING INCLUDES THE MESH WORK OF THE TELESCOPIC SPREADER. TANDEMLOC, INC. DISCLAIMS ALL LIABILITY FOR ANY DAMAGE TO PROPERTY OR PERSONS RESULTING FROM THE USE OF THIS DRAWING OR THE TELESCOPIC SPREADER. TANDEMLOC, INC. IS NOT RESPONSIBLE FOR ANY DAMAGE TO PROPERTY OR PERSONS RESULTING FROM THE USE OF THIS DRAWING OR THE TELESCOPIC SPREADER.</small>	<small>DATE: 12-09-18 DATE: 12-09-18</small>	<small>TITLE: AT14A023-360-PA 204"-360" TELESCOPIC SPREADER</small>
<small>REV: 0</small>	<small>REV: 0</small>	<small>REV: 0</small>
<small>REV: 0</small>	<small>REV: 0</small>	<small>REV: 0</small>