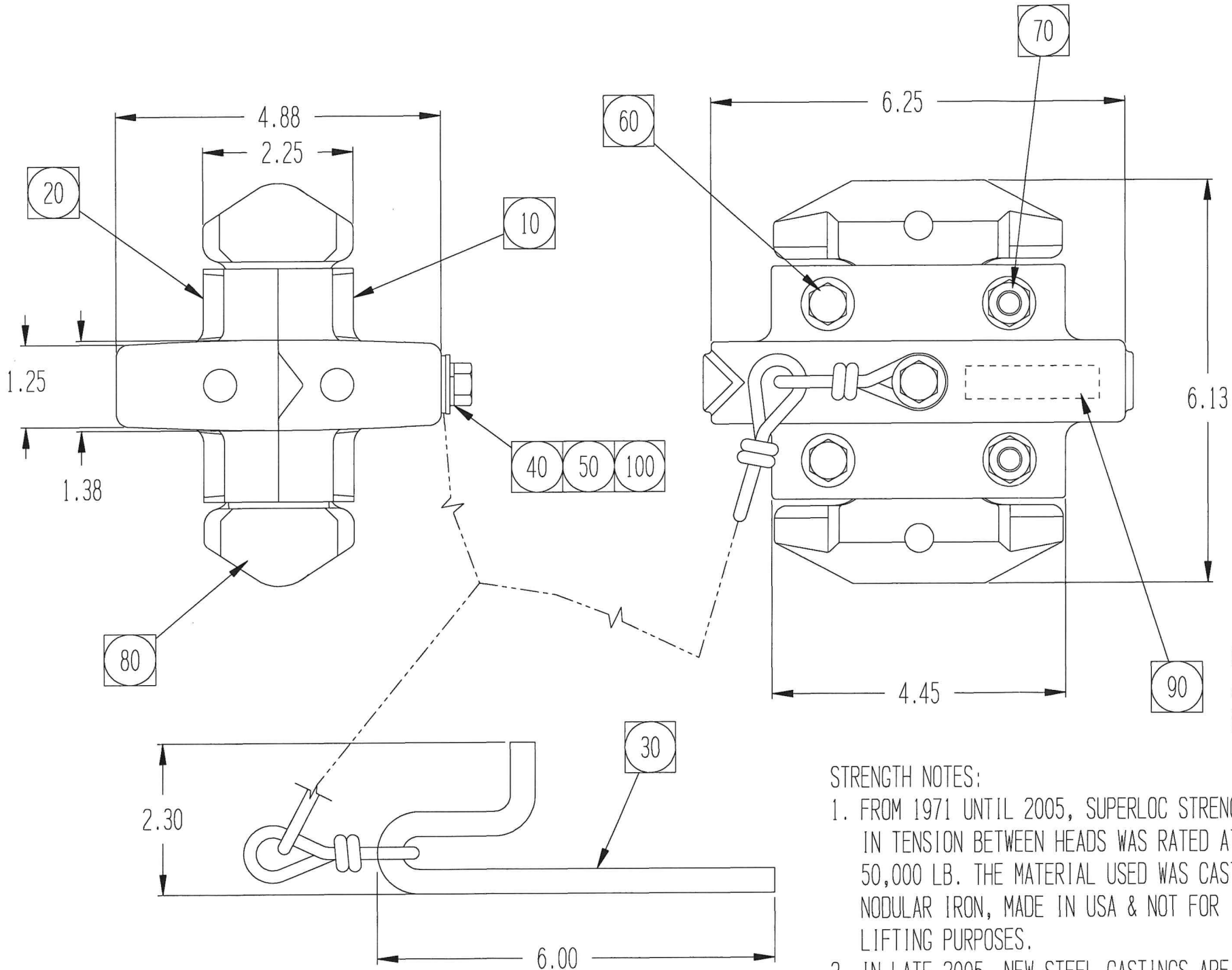


REVISIONS				
ZONE	REV	DESCRIPTION	DATE	APPROVED
	A	ADDED BALLOON 9	08-01-03	MD
	B	ADDED FLAT WASHER & REMOVED 1 LOCKWASHER FROM CHAIN ASSY		MD
	C	REDRAWN ON CAD & INCORPORATED ASSY NOTES ONTO DRAWING	09-22-05	BT
	D	ADDED GENERAL AND STRENGTH NOTES	09-27-05	BT
	E	REVISED BALLOONS TO MATCH ELEC BOM	05-22-07	WT



- ASSEMBLY NOTES:
1. TO CHECK THAT PC 80 CONES OPERATE FREELY IN BOLTED ASSEMBLY MANUALLY ROTATE CONES APPROX 90° TO "LOCK" POSITION STOP. ALSO USE OPERATING PROCEDURE IN LATEST REVISION OF INSTRUCTION MANUAL. (AS A PART OF THE ASSEMBLY PROCEDURE, EACH FINAL ASSEMBLY SHALL BE OPERATIONALLY CHECKED FOR FIT, LOCK, AND UNLOCK IN SHOP JIGS WHICH SIMULATE I.S.O. STD 1161 FOR CORNERS.)
 2. THE 1ST LINK OF CHAIN ON PC 30, PIN & LANYARD, BOLTED TO PC 10, MUST RUN APPROX. HORIZONTAL AS SHOWN, SO THAT IN USE, THIS FIRST LINK IS NOT PROJECTING INTO THE TOP AND BOTTOM SURFACES OF THE CORNER FITTINGS TO WHICH THE CONNECTOR WILL BE ENGAGED.

- GENERAL NOTES:
1. MATERIAL: STEEL,
GALV & ZINC PLATED
 2. WEIGHT: 15 LB.
 3. PACK WITH COPY OF INSTRUCTION MANUAL
D401A00A-1GA (OFFSET PRINTED)
 4. INSTRUCTION MANUAL CAN BE USED FOR SALES PURPOSES. IT IS PRINTED & ALSO IN MD PDF FILE


CLEAN WITH ALCOHOL SWAB & DRY, APPLY P/N LABEL HERE "401A00A-1GA"

110 LABOR

- STRENGTH NOTES:
1. FROM 1971 UNTIL 2005, SUPERLOC STRENGTH IN TENSION BETWEEN HEADS WAS RATED AT 50,000 LB. THE MATERIAL USED WAS CAST NODULAR IRON, MADE IN USA & NOT FOR LIFTING PURPOSES.
 2. IN LATE 2005, NEW STEEL CASTINGS ARE BEING UTILIZED FROM CHINA, THE STEEL PARTS WILL ALLOW USE AS A LIFTING PRODUCT, IF INDIVID. PROOF TESTED, THE WLL IS YET TO BE VERIFIED.

DIMENSIONS ARE IN INCHES AND FOR REFERENCE ONLY.
ABOVE: PC 80 CONE IN "UNLOCK" POSITION.

SEE ELECTRONIC PARTS LIST FOR BILL OF MATERIALS

<input type="checkbox"/> "X" DENOTES APPLICABLE DATA UNLESS OTHERWISE NOTED, DIMENSIONS ARE IN INCHES & TOLERANCES ARE: .XX ±.06 .XXX±.0007 .XXX ±.03		<input type="checkbox"/> "X" DENOTES APPLICABLE DATA LOST WAX CASTING TOL. IS: 0 TO 4" ±.030 , 4.01" TO 7" ±.038" 7.01" TO 10.5" ±.045" OVER 10.5" ±.052"																								
THIS DOCUMENT CONTAINS DATA WHICH WHICH IS EITHER PATENTED, PATENT PENDING OR IS THE PROPERTY OF TANDEMLOC, INC. DISCLOSURE, OR COPYING WITHOUT THE WRITTEN AUTHORIZATION OF TANDEMLOC, INC. IS EXPRESSLY PROHIBITED.		<table><tr><th colspan="2">APPROVALS</th><th>DATE</th></tr><tr><td>DRAWN</td><td>BT</td><td>09-22-05</td></tr><tr><td>CHECKD</td><td>MD</td><td>09-22-05</td></tr></table>		APPROVALS		DATE	DRAWN	BT	09-22-05	CHECKD	MD	09-22-05	<table><tr><td>TITLE</td><td colspan="2">VERTICAL CONNECTOR P/N 401A00A-1GA "SUPERLOC II" ASSEMBLY</td></tr><tr><td>SIZE</td><td>CAGE CODE</td><td>DWG NO.</td></tr><tr><td>D</td><td>65059</td><td>M401A00A</td></tr><tr><td colspan="2">SCALE</td><td>CALC. WT. ACT. WT.</td></tr></table>		TITLE	VERTICAL CONNECTOR P/N 401A00A-1GA "SUPERLOC II" ASSEMBLY		SIZE	CAGE CODE	DWG NO.	D	65059	M401A00A	SCALE		CALC. WT. ACT. WT.
APPROVALS		DATE																								
DRAWN	BT	09-22-05																								
CHECKD	MD	09-22-05																								
TITLE	VERTICAL CONNECTOR P/N 401A00A-1GA "SUPERLOC II" ASSEMBLY																									
SIZE	CAGE CODE	DWG NO.																								
D	65059	M401A00A																								
SCALE		CALC. WT. ACT. WT.																								
				REV. E SHEET 1 OF 1																						