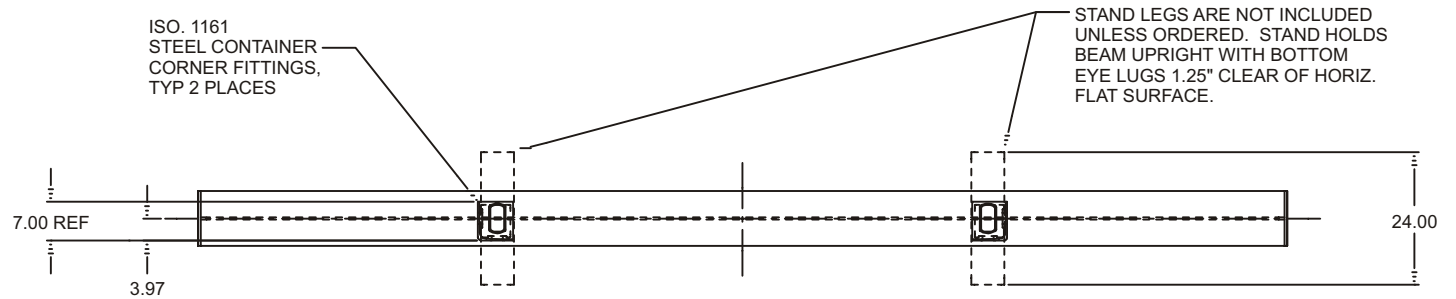


# LIFT BEAM WITH ISO CONTAINER TOP LIFT POINTS 16, 14, 12 & 10 FOOT SPANS, WLL 20 TONS (U20000B-1PA)

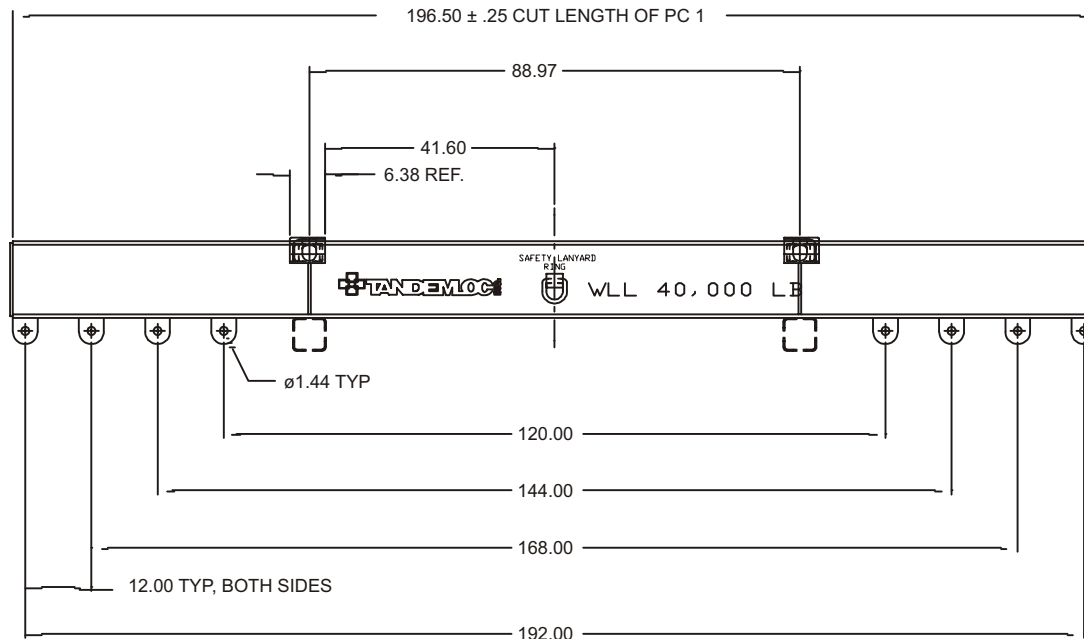
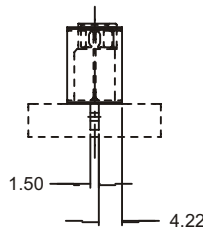
Cage Code: 65059 | Drawing No: SU2000B | Revision: -- | Sheet: 1 of 1

UNLESS OTHERWISE SPECIFIED, DIMENSIONS ARE IN INCHES  
SEE ELECTRONIC PARTS LIST FOR BILL OF MATERIALS



**NOTES:**

1. TWO LIFT BEAMS ARE REQUIRED, ONE FOR EACH END OF A TYPICAL ISO CONTAINER LIFTING SPREADER.
2. A SAFETY LANYARD EYE IS PROVIDED AT THE CENTER TOP OF EACH BEAM. USE THIS EYE TO CONNECT A SAFETY CHAIN FROM THE SPREADER TO PREVENT ACCIDENTAL DISENGAGEMENT FROM SPREADER WHILE UNLOADED.
3. BEAM CONFORMS TO ASME B30.20 & OSHA REQUIREMENTS. PROOF TESTED TO WLL X 125%
4. WORK LOAD LIMIT IS 20 TONS
5. WEIGHT: 1,196 LB.



To avoid lifter failure, potential death and property damage, never exceed WLL (Working Load Limit)

This document contains the proprietary information of Tandemloc, Inc. and your access and use shall be, and is at all times, pursuant to and limited by the Tandemloc, Inc. Terms of Use.

You shall not, and shall not encourage, assist, or authorize another party to copy, distribute, publically display, modify, reverse engineer, decompile, or take any other action to reproduce or replicate this document or the information contained herein. © Copyright 2012 by Tandemloc, Inc.

Dimensions are subject to manufacturing tolerance and change.



Email: [info@tandemloc.com](mailto:info@tandemloc.com) • [www.tandemloc.com](http://www.tandemloc.com)  
824 Highway 101 • Havelock, NC 28532  
TEL: 1.800.258.7324 (252.447.7155)  
FAX: 1.800.892.3273 (252.447.5502)

Tandemloc designs, manufactures and tests lifting, securing and mobilizing components for all industries. See our website for details and important safety information.  
Read all safety labels and instructions prior to use. Product to be used by qualified personnel only.