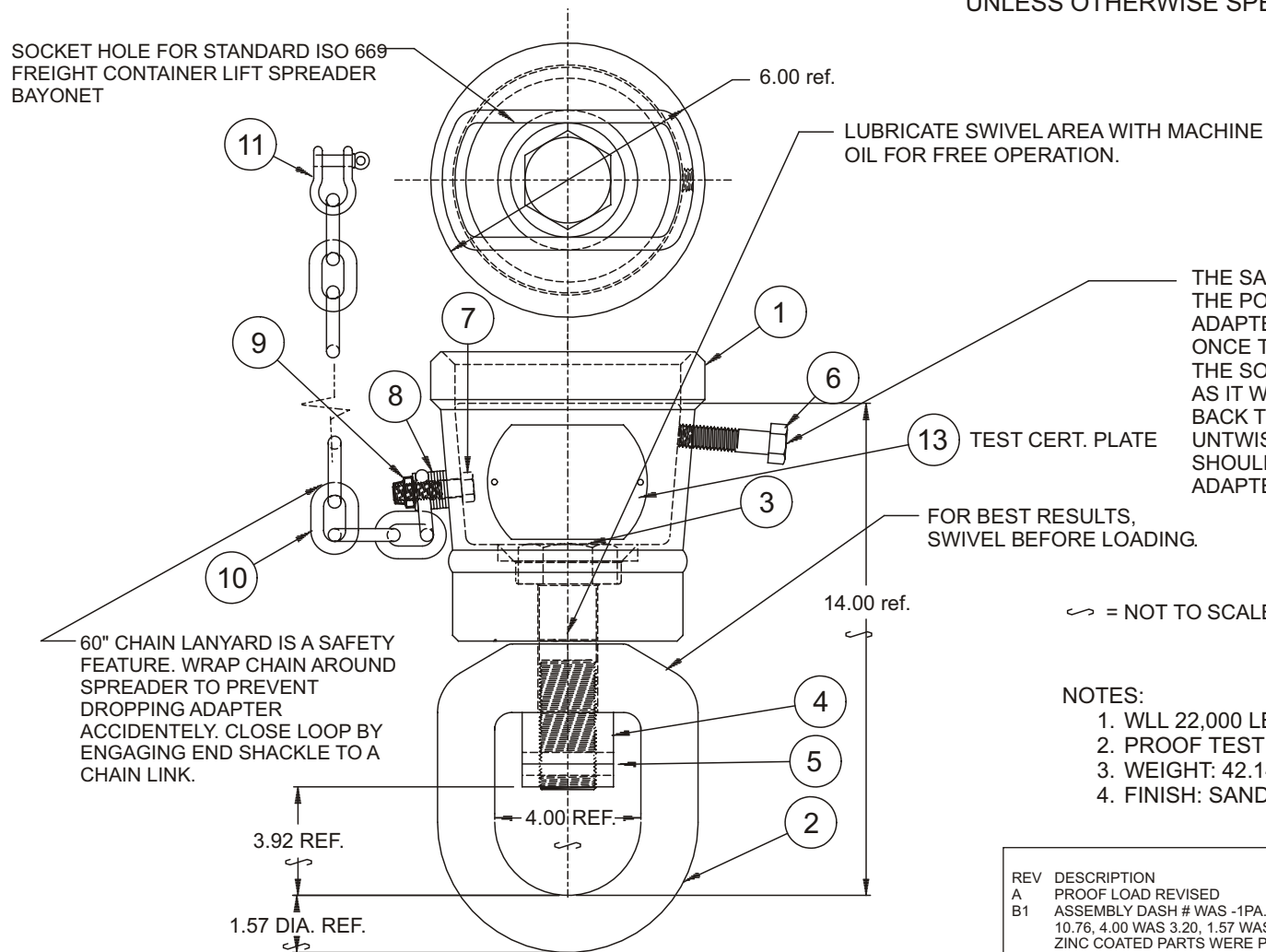


ADAPTER SHOE & SWIVEL, THERMAL ZINC COATED (T31000A-1PA)

Cage Code: 65059 | Drawing No: ST31000A | Revision: C | Sheet: 1 of 1

UNLESS OTHERWISE SPECIFIED, DIMENSIONS ARE IN INCHES

SOCKET HOLE FOR STANDARD ISO 669
FREIGHT CONTAINER LIFT SPREADER
BAYONET



THE SAFETY LOCK BOLT SHOULD BE IN THE POSITION SHOWN WHEN PLACING THE ADAPTER SOCKET ONTO A SPREADER BAYONET. ONCE THE BAYONET IS TWISTLOCKED IN THE SOCKET, SCREW THE BOLT IN AS FAR AS IT WILL GO. TO REMOVE, UNSCREW BOLT BACK TO THE ORIGINAL POSITION AND UNTWIST LOCK THE BAYONET. ALL PERSONS SHOULD STAND CLEAR OR PREVENT THE ADAPTER FROM DROPPING.

FOR BEST RESULTS, SWIVEL BEFORE LOADING.

∞ = NOT TO SCALE

NOTES:

1. WLL 22,000 LB.
2. PROOF TEST TO 200% OF WLL.
3. WEIGHT: 42.14 LB.
4. FINISH: SANDBLAST, PRIME & PAINT SAFETY YELLOW

REV	DESCRIPTION	REVISIONS	DATE	APPROVED
A	PROOF LOAD REVISED		04/20/99	MD
B1	ASSEMBLY DASH # WAS -1PA, WEIGHT WAS 33.3 LB. 14.00 WAS 10.76, 4.00 WAS 3.20, 1.57 WAS 1.25, 3.93 WAS 2.378. THERMAL ZINC COATED PARTS WERE PAINTED.		10/25/02	MD
C	-1PA WAS -1TZ, PAINTED PARTS WERE THERMAL ZINCED		10/7/08	WT

To avoid lifter failure, potential death and property damage, never exceed WLL (Working Load Limit)

This document contains the proprietary information of Tandemloc, Inc. and your access and use shall be, and is at all times, pursuant to and limited by the Tandemloc, Inc. Terms of Use.

You shall not, and shall not encourage, assist, or authorize another party to copy, distribute, publically display, modify, reverse engineer, decompile, or take any other action to reproduce or replicate this document or the information contained herein. © Copyright 2012 by Tandemloc, Inc.

Dimensions are subject to manufacturing tolerance and change.



Email: info@tandemloc.com • www.tandemloc.com
824 Highway 101 • Havelock, NC 28532
TEL: 1.800.258.7324 (252.447.7155)
FAX: 1.800.892.3273 (252.447.5502)

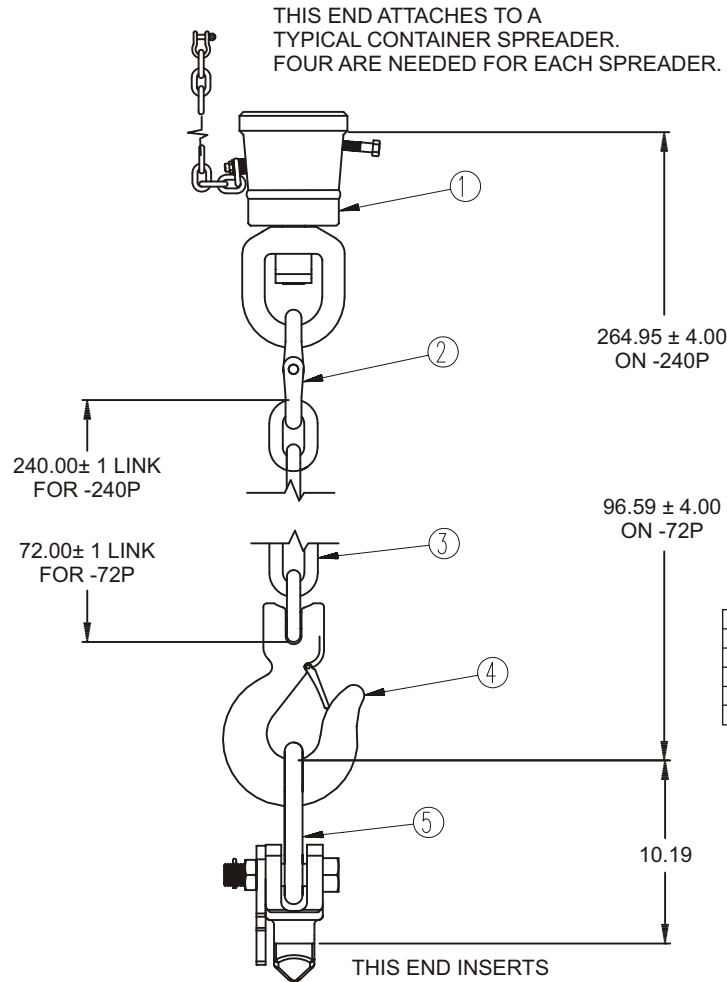
Tandemloc designs, manufactures and tests lifting, securing and mobilizing components for all industries. See our website for details and important safety information.

Read all safety labels and instructions prior to use. Product to be used by qualified personnel only.

AA31000A-240P & -72P GEAR, EMERGENCY LIFT (AA31000A)

Cage Code: 65059 | Drawing No: SAA31000A | Revision: -- | Sheet: 1 of 1

UNLESS OTHERWISE SPECIFIED, DIMENSIONS ARE IN INCHES
DO NOT SCALE DRAWING



NOTE:

- PART NO.: AA31000A-240P, GEAR, EMERGENCY LIFT WITH 240" OF CHAIN
AA31000A-72P, GEAR, EMERGENCY LIFT WITH 72" OF CHAIN
AA31000A-240NLP, GEAR, EMERGENCY LIFT WITH 240" OF CHAIN AND NO LIFT LUG
AA31000A-72NLP, GEAR, EMERGENCY LIFT WITH 72" OF CHAIN AND NO LIFT LUG
- WLL: 22,000 LB
- PROOF TESTED TO 200% (44,000 LB) AND CERTIFIED
- STANDARD SPECIFICATION #EAD21000A APPLIES
- FINISH: SELF-COLORED
- CALCULATED WEIGHT: -240P 202.61 LB
-72P 119.31 LB
- DESIGNED AND MANUFACTURED TO MEET OR EXCEED ASME B30.20

PULL TO PULL
(NOT INCLUDING PC 5)

LIST OF MATERIALS					
5	1	1	-	-	20901AA-1PA, LUG, LIFT, VERTICAL, W/ MASTER LINK SLF CLD
4	1	1	1	1	\$KWEF33656, HOOK, CLEVIS SLING, 3/4", SELF COLORED
3	240"	72"	240"	72"	\$GUNKL-19-8, CHAIN, 3/4", GR80 ALLOY
2	1	1	1	1	\$GUEG-18/20-8, CHAIN CONNECTOR, 3/4" ALLOY, SELF COLORED
1	1	1	1	1	T31000A-1PA, ADAPTER SHOE W/ SWIVEL, PAINTED SFTY YELLOW
PC. NO	-240P	-72P	-240NLP	-72NLP	PART NO. AND DESCRIPTION

PULL TO PULL
OF PC 5

To avoid lifter failure, potential death and property damage, never exceed WLL (Working Load Limit)

This document contains the proprietary information of Tandemloc, Inc. and your access and use shall be, and is at all times, pursuant to and limited by the Tandemloc, Inc. Terms of Use.

You shall not, and shall not encourage, assist, or authorize another party to copy, distribute, publically display, modify, reverse engineer, decompile, or take any other action to reproduce or replicate this document or the information contained herein. © Copyright 2012 by Tandemloc, Inc.

Dimensions are subject to manufacturing tolerance and change.



Email: info@tandemloc.com • www.tandemloc.com
824 Highway 101 • Havelock, NC 28532
TEL: 1.800.258.7324 (252.447.7155)
FAX: 1.800.892.3273 (252.447.5502)

Tandemloc designs, manufactures and tests lifting, securing and mobilizing components for all industries. See our website for details and important safety information.
Read all safety labels and instructions prior to use. Product to be used by qualified personnel only.