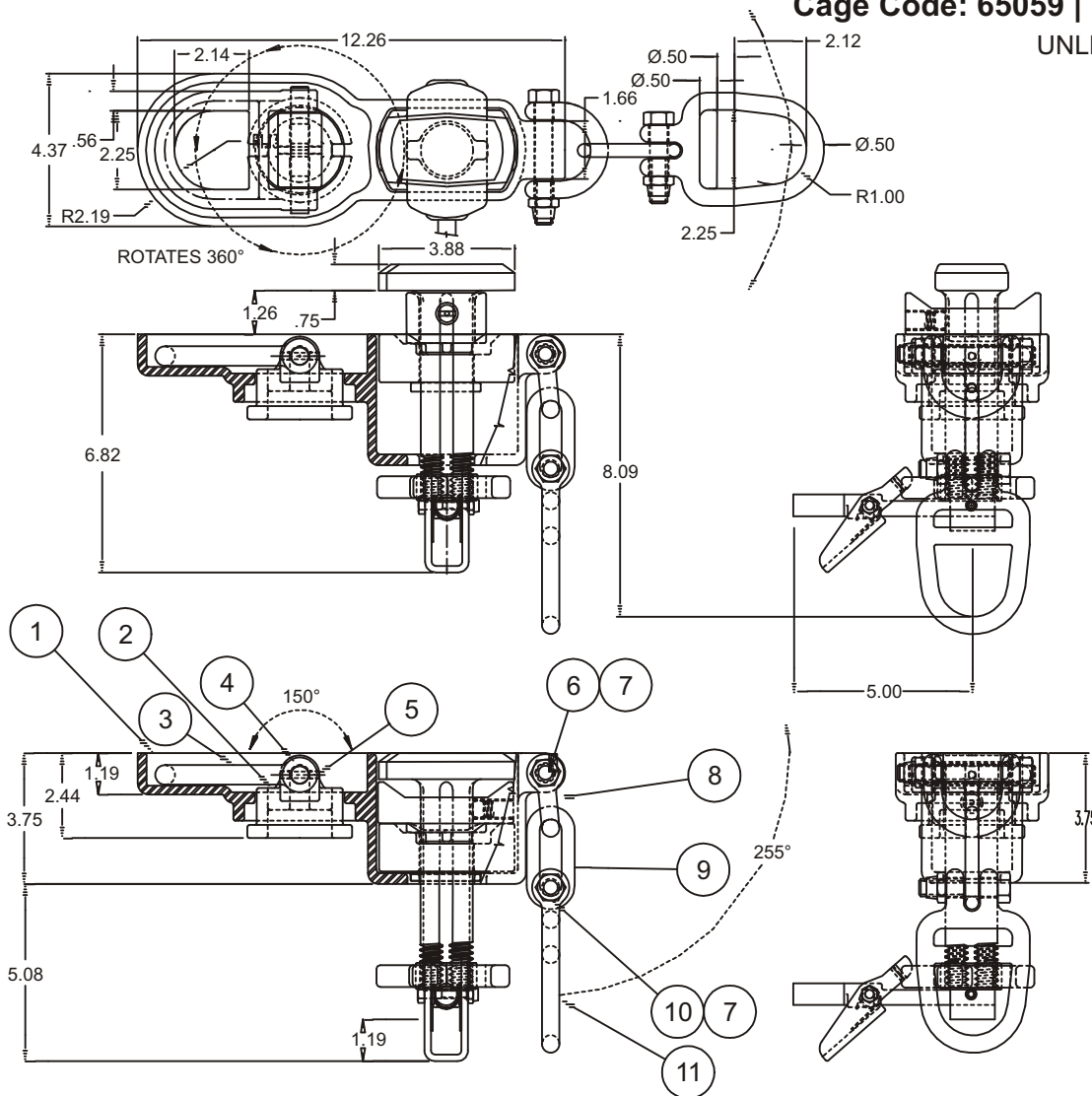


TIEDOWN ASSEMBLY & KITS (T12000D)

Cage Code: 65059 | Drawing No: ST12000D | Revision: L | Sheet: 1 of 3

UNLESS OTHERWISE SPECIFIED, DIMENSIONS ARE IN INCHES



T12000D-1G0A TIEDOWN COMBO ASSEMBLY W/ SOLID SWIVEL (AS SHOWN)
 - WEIGHT: 22.82 LB.
 T12000D-1SGA TIEDOWN COMBO ASSEMBLY W/ SPLIT SWIVEL (NOT SHOWN)
 - WEIGHT: 22.82 LB.

LIST OF MATERIALS - ONE ASSEMBLY

PC. NO.	QUAN	PART NO. AND DESCRIPTION	UNIT WEIGHT
11	1	T12125C-1GB TIEDOWN RING OUTER, GALV./BLACK T-CT	1.420 LB.
10	1	DHB005013000225 HEX BOLT GR 8 STL, DACROMET BLACK	0.150 LB.
9	1	T12175C-1GB MID LINK, STL, GALV./BLACK T-CT	0.227 LB.
8	1	T12150C-1GB CLEVIS LINK, STL, GALV./BLACK T-CT	0.400 LB.
7	2	BLS005013000044 2 WAY LKNUT, STL DACROMET T-CT	0.086 LB.
6	1	DHB0005XXXX0075 HEX BOLT GR 8 STL DACROMET/BLACK	0.225 LB.
5	1	SCP0005XXXX0075 COTT PIN CRES FOR .062 HOLE X .75 LG.	0.007 LB.
4	1	S33004A-3DL HINGE PIN, DACROMET/BLACK T-CT	0.204 LB.
3	1	S33003A-1GB TIEDOWN CLEVIS, GALV./BLACK T-CT	1.130 LB.
2	1	S33002A-MGB SWIVEL RETAINER, GALVANIZED/BLACK T-CT	1.630 LB.
1	1	T12100C-1GW COMBO BODY CAST, GALVANIZED, GROUND	7.450 LB.

REVISIONS

REV	DESCRIPTION	DATE	APPR.
C	UPDATED TO REV C OF SHT 3	5/9/02	MD
D	SHT 1. L/M PC 1 & 2; T12000D WAS T12000C	5/16/02	MD
E	SEE SHEET 3	9/26/03	MD
F	SEE SHEET 3	9/26/03	MD
G	ADDED SHEET 4	12/11/03	MD
H	PC 1 IN L/M -2GD WAS -2GO (CORRECTION)	12/16/03	MD
I	ADDED SHEET 5 & PART -3LGA	09/19/07	WT
J	ADDED PARTS -1LGOA & -1LSGA TO SHEET 1		
J	PIECES 8, 9 AND 20 HAD "u" ON SHEET 3 & 5	1/27/09	DAH
K	SEE SHEET 4	6/30/10	DAH
L	REMOVED LONG HANDLE PARTS, REMOVED SHEET 2, 4 AND 5	4/19/13	DAH

To avoid lifter failure, potential death and property damage, never exceed WLL (Working Load Limit)

This document contains the proprietary information of Tandemloc, Inc. and your access and use shall be, and is at all times, pursuant to and limited by the Tandemloc, Inc. Terms of Use.

You shall not, and shall not encourage, assist, or authorize another party to copy, distribute, publically display, modify, reverse engineer, decompile, or take any other action to reproduce or replicate this document or the information contained herein. © Copyright 2012 by Tandemloc, Inc.

Dimensions are subject to manufacturing tolerance and change.



Email: info@tandemloc.com • www.tandemloc.com
 824 Highway 101 • Havelock, NC 28532
 TEL: 1.800.258.7324 (252.447.7155)
 FAX: 1.800.892.3273 (252.447.5502)

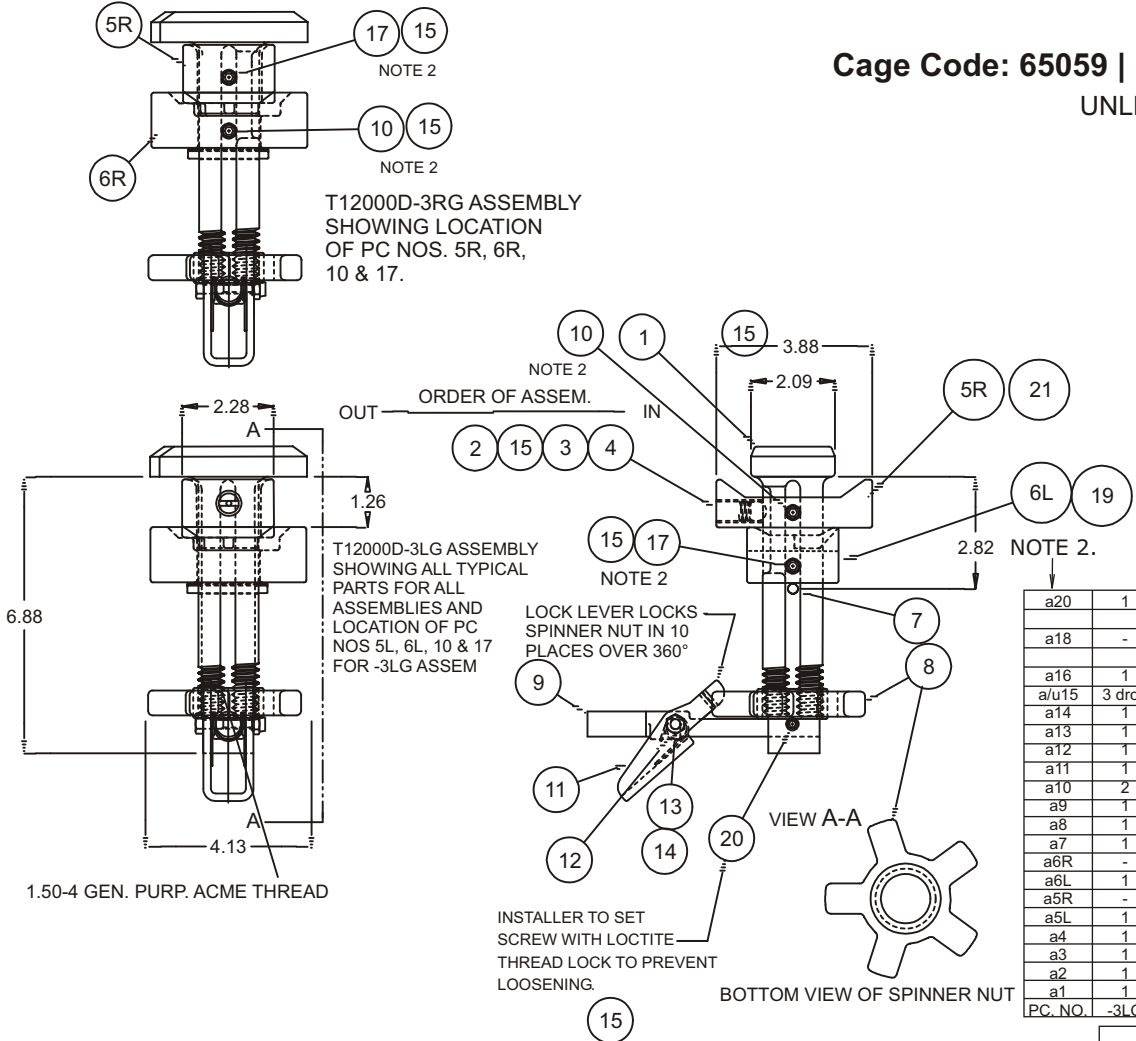
Tandemloc designs, manufactures and tests lifting, securing and mobilizing components for all industries. See our website for details and important safety information.

Read all safety labels and instructions prior to use. Product to be used by qualified personnel only.

TIEDOWNS (T12000D)

Cage Code: 65059 | Drawing No: ST12000D | Revision: L | Sheet: 2 of 3

UNLESS OTHERWISE SPECIFIED, DIMENSIONS ARE IN INCHES



- NOTES:
- TO FACILITATE ASSEMBLY INTO THE T120100C-1GW BODY WHICH IS FIRST WELDED TO A CHASSIS DECK, THE INTERNAL SCREW DOWN TWISTLOC IS SHIPPED AS SUB ASSEMBLIES AND LOOSE PARTS. SUB ASSEMBLIES ARE DEFINED WITH COMPONENT PC NOS MARKED "a", WHILE LOOSE PART PC NOS ARE MARKED "u" IN THE LIST OF MATERIALS
 - PC 10 & 17 ARE SET SCREWS WHICH MAKE ASSEMS. R/H OF L/H, ALONG WITH THE PC 5L, 5R, 6L, & 6R COMPONENTS. THE SET SCREWS ARE SCREWED IN TO PROJECT ABOUT .13" INSIDE THE SHAFT RECESS OF PC 1, ALLOWING FREE 90° ROTATION OF THE SHAFT BETWEEN STOPS WHEN SET SCREWS ARE ADJUSTED PROPERLY. LOCK SET SCREWS THREAD WITH PC 15 THREAD LOCK.

SEE SHEET 1 FOR ASSEMBLY IN COMBO FITTING.

LIST OF MATERIALS - ONE ASSEMBLY

PC NO.	-3LG	-3RG	-3GA	PART NO. AND DESCRIPTION	UNIT WEIGHT
a20	1	1	1	SSI003118000038 SET SCR. CONE POINT, STAINLESS STL.	.003
a18	-	-	1	T12094A-1GA LOC. BLK(NO STOP)STD SCREW DOWN, GALV	1.70
a16	1	1	1	SSV003816000125 SET SCR. OVAL POINT, STAINLESS STL.	0.022
a/u15	3 drop	3 drop	-	\$LON262 THREAD LOCK SOLUTION (pc 20 is unassem.)	NIL
a14	1	1	1	SPS002520000031 LOCKNUT .25-20UNC STAINLESS STL.	0.001
a13	1	1	1	SHB002520000175 BOLT .25-20UNC STAINLESS STL.	0.019
a12	1	1	1	T12097A-2SS SPRING STAINLESS STEEL	0.004
a11	1	1	1	T12098A-1GA LOCKING LEVER, GALV.	0.28
a10	2	2	-	SSV003816000038 SET SCR, OVAL POINT, STAINLESS STL	0.005
a9	1	1	1	T12096A-1GA HANDLE, GALV	0.44
a8	1	1	1	T12099A-1GA NUT, SPINNER 5 BAR, GALV.	0.90
a7	1	1	1	SRP0025XXX0200 ROLLPIN, .25 X 2.00 STAINLESS STEEL	0.02
a6R	-	1	-	T120093A-1GA-R PUSH BLOCK, RIGHT HAND, GALV.	1.73
a6L	1	-	-	T120093A-1GA-L PUSH BLOCK, LEFT HAND, GALV.	1.73
a5R	-	1	-	T12094A-2GA-R LOC. BLK R/H, W/ STOP S.D.TYPE, GALV.	1.72
a5L	1	-	-	T12094A-2GA-L LOC. BLK L/H, W/ STOP S.D.TYPE, GALV.	1.72
a4	1	1	1	\$WIE-BALL50CRES BALL STAINLESS STEEL	0.017
a3	1	1	1	\$LEELC-063G-2SS COIL SPRING, STAINLESS STEEL	0.008
a2	1	1	1	806150B-300 RETAINER SCREW/GREASE FITTING ASSEMB.	0.017
a1	1	1	1	T12095A-1GA BAYONET, MACHINED, GALVANIZED	3.70 LB

REVISIONS

REV	DESCRIPTION	DATE	APPR.
F	PC 18 WAS 806020F-1GA	9/26/03	MD
G	ADDED SHEET 4	12/11/03	MD
H	SEE SHEET 1 & 4	12/16/03	MD
I	ADDED SHEET 5 & PART -3LGA, ADDED PARTS -1LGOA & -1LGA TO SHEET 1	09/19/07	WT
J	PIECES 8, 9 AND 20 HAD "u" ON SHEET 3 & 5	1/27/09	DAH
K	SEE SHEET 4	6/30/10	DAH
L	THIS WAS SHEET 3, REMOVED SHEET 2, 4 AND 5	4/19/13	DAH

- T12000D-3RG TWISTLOC, RIGHT HAND, SCREW DOWN, INTERNAL ASSEMBLY, GALV. WGT: 8.89 LB.
- T12000D-3LG TWISTLOC, LEFT HAND, SCREW DOWN, INTERNAL ASSEMBLY, GALV. WGT: 8.89 LB.
- T12000D-3GA TWISTLOC, UNIVERSAL, SCREW DOWN, INTERNAL ASSEMBLY, GALV. WGT: 8.88 LB.

To avoid lifter failure, potential death and property damage, never exceed WLL (Working Load Limit)
 This document contains the proprietary information of Tandemloc, Inc. and your access and use shall be, and is at all times, pursuant to and limited by the Tandemloc, Inc. Terms of Use.
 You shall not, and shall not encourage, assist, or authorize another party to copy, distribute, publically display, modify, reverse engineer, decompile, or take any other action to reproduce or replicate this document or the information contained herein. © Copyright 2012 by Tandemloc, Inc.
 Dimensions are subject to manufacturing tolerance and change.



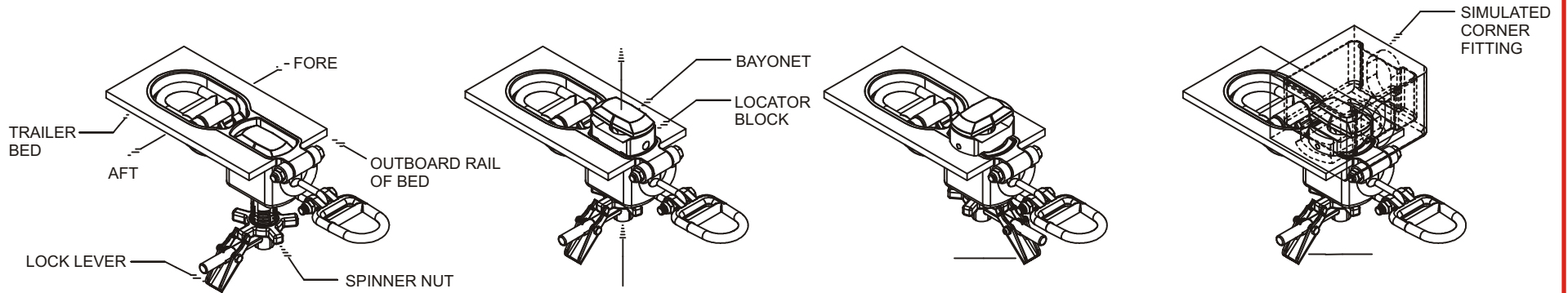
Email: info@tandemloc.com • www.tandemloc.com
 824 Highway 101 • Havelock, NC 28532
 TEL: 1.800.258.7324 (252.447.7155)
 FAX: 1.800.892.3273 (252.447.5502)

Tandemloc designs, manufactures and tests lifting, securing and mobilizing components for all industries. See our website for details and important safety information.
 Read all safety labels and instructions prior to use. Product to be used by qualified personnel only.

TIEDOWN USE (T12000D)

Cage Code: 65059 | Drawing No: ST12000D | Revision: L | Sheet: 3 of 3

UNLESS OTHERWISE SPECIFIED, DIMENSIONS ARE IN INCHES

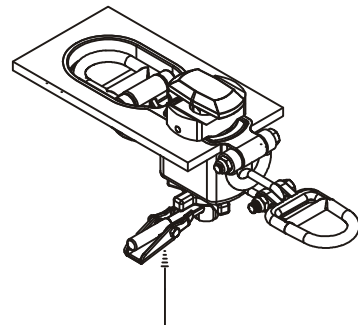


1. HOUSING IS WELDED INTO STRUCTURE AND INTERNAL PARTS ARE ASSEMBLED.* MAKE SURE STAR SHAPED SPINNER NUT IS AT BOTTOM OF BAYONET

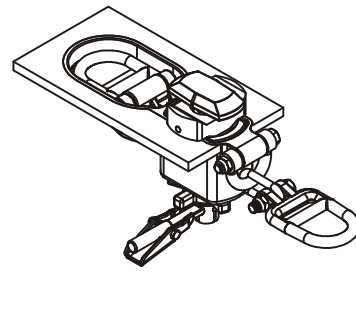
2. PUSH BAYONET ASSEMBLY UPWARD UNTIL BAYONET HEAD AND LOCATOR BLOCK ARE ABOVE THE TOP HOUSING SURFACE.

3. ROTATE THE HANDLE 90° SO THE LOCATOR BLOCK AND BAYONET TURN 90° AND SIT ON TOP OF THE HOUSING SURFACE. (LOCATOR BLOCK AND BAYONET SHOULD TURN TOGETHER.)

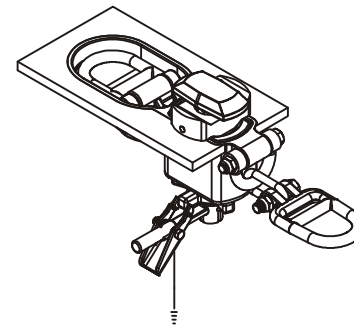
4. LOWER CONTAINER WITH CORNER FITTINGS ONTO BAYONETS AND THEN TURN HANDLE BACK 90°. THE CORNER FITTING CAPTURES THE LOCATOR BLOCK PREVENTING IT FROM TURNING BUT ALLOWS THE BAYONET TO TURN TO LOCK INSIDE OF THE CORNER FITTING.



5. SQUEEZE THE LOCK LEVER ON THE HANDLE TO RELEASE THE STAR SHAPED SPINNER NUT.



6. WITH THE BAYONET LOCKED INSIDE THE CORNER FITTING, TIGHTEN THE SPINNER NUT UNTIL HAND TIGHT. THE LOCK LEVER WILL NEED TO LINE UP AND EITHER CAPTURE OR BLOCK A SPOKE OF THE SPINNER NUT TO PREVENT IT FROM TURNING EITHER DIRECTION.



7. RELEASE THE LOCK LEVER AND REPEAT ON ALL OTHER TWISTLOC TIEDOWNS.

*IN SOME APPLICATIONS IT MAY BE MORE DESIRABLE TO WELD HOUSING INTO BED WITHOUT INTERNAL TIEDOWN OR HOUSING PARTS TO BETTER ALLOW FOR SANDBLAST AND PAINT PROCESSES.

To avoid lifter failure, potential death and property damage, never exceed WLL (Working Load Limit)

This document contains the proprietary information of Tandemloc, Inc. and your access and use shall be, and is at all times, pursuant to and limited by the Tandemloc, Inc. Terms of Use.

You shall not, and shall not encourage, assist, or authorize another party to copy, distribute, publically display, modify, reverse engineer, decompile, or take any other action to reproduce or replicate this document or the information contained herein. © Copyright 2012 by Tandemloc, Inc.

Dimensions are subject to manufacturing tolerance and change.



Email: info@tandemloc.com • www.tandemloc.com

824 Highway 101 • Havelock, NC 28532

TEL: 1.800.258.7324 (252.447.7155)

FAX: 1.800.892.3273 (252.447.5502)

Tandemloc designs, manufactures and tests lifting, securing and mobilizing components for all industries. See our website for details and important safety information.

Read all safety labels and instructions prior to use. Product to be used by qualified personnel only.