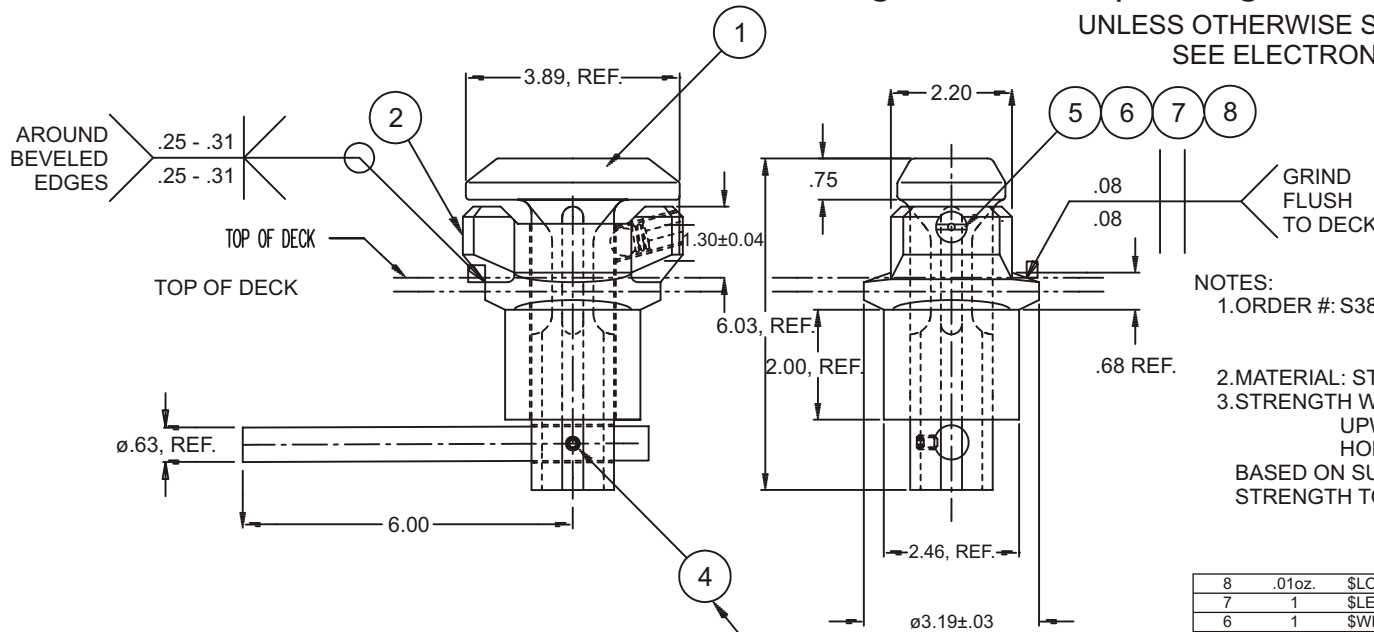


TWISTLOCK (S3800B-1PA)

Cage Code: 65059 | Drawing No: SS3800B | Revision: I | Sheet: 1 of 1

UNLESS OTHERWISE SPECIFIED, DIMENSIONS ARE IN INCHES
SEE ELECTRONIC PARTS LIST FOR BILL OF MATERIALS
DO NOT SCALE DRAWING



NOTES:

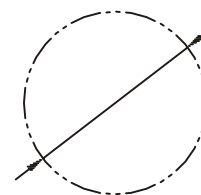
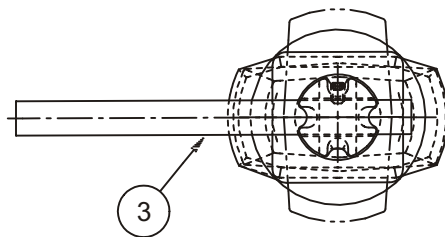
1. ORDER #: S3800B-1PA TWISTLOC, STRAIGHT HANDLE, PAINTED WEIGHT: 9.0 LB.
2. MATERIAL: STEEL, PAINTED
3. STRENGTH WITH 1.5 SAFETY FACTOR TO ULTIMATE
UPWARD RESTRAINT 29,000 LB
HORIZONTAL SHEAR 25,000 LB (W/ WELDS SHOWN)
BASED ON SUPPORTING STRUCTURE WITH SUFFICIENT STRENGTH TO SUPPORT THE RATED LOADS.

LIST OF MATERIALS

PC. NO.	QUAN	PART NO. AND DESCRIPTION
8	.01oz.	\$LON271 LOCTITE 271 PERM THREADLOCK
7	1	\$LEELC-063G-2SS SPRING STAINLESS STEEL
6	1	\$WIE-BALL50CRES BALL STAINLESS STEEL
5	1	806150B-1ZN LUB/SPRING RETAINER SCREW
4	1	WS1003118000038 SET SCREW CONE END .31-18UNC STL ZN PL
3	1	S38099B-1PA HANDLE, STRAIGHT, PAINTED
2	1	S38097B-1PA BODY, PAINTED
1	1	S38098B-1PA BAYONET, STRAIGHT HANDLE, PAINTED

THE HANDLE OPERATES FROM LOCK TO UNLOCK IN A 90° ARC IN EITHER DIRECTION.

PC 8 IS NOT USED HERE TO ALLOW DISASSEMBLY TO INSTALL. INSTALLER TO USE A THREAD LOCK SOLUTION WHEN FINAL ASSEMBLY IS MADE.



ø3.32 APPROX. HOLE SIZE FOR INSTALLATION OF TWISTLOC.

REVISIONS

REV	DESCRIPTION	DATE	APPR.
A	6.00 WAS 5.00	11/9/98	MD
B	ADDED RECESSED AREA FOR SCREW-DOWN OPTION	3/31/99	MD
C	ADDED PC 10, ADDED PC 10 INSTALLING NOTE.	5/17/00	MD
D	3.38 HOLE WAS SMALLER, PICTURE CHANGE	10/17/00	MD
E	ADDED NOTE 3	1/18/08	WT
F	ADDED DECK LOCATION W/ WELDING DIRECTIONS FOR INSTALLATION	3/5/08	DAH
G	\$LEELC-063G-2SS WAS 806PX12, \$WIE-BALL50CRES WAS 806PX15, WS1003118000038 WAS WIS003118000038	8/31/09	DAH
H	REMOVED -2PA WITH BENT HANDLE AND ADJUSTED PART NUMBERS IN LIST OF MATERIALS	3/15/10	DAH
I	REMOVED REFERENCE TO OTHER DRAWING	7/15/11	DAH

To avoid lifter failure, potential death and property damage, never exceed WLL (Working Load Limit)

This document contains the proprietary information of Tandemloc, Inc. and your access and use shall be, and is at all times, pursuant to and limited by the Tandemloc, Inc. Terms of Use.

You shall not, and shall not encourage, assist, or authorize another party to copy, distribute, publically display, modify, reverse engineer, decompile, or take any other action to reproduce or replicate this document or the information contained herein. © Copyright 2012 by Tandemloc, Inc.

Dimensions are subject to manufacturing tolerance and change.



Email: info@tandemloc.com • www.tandemloc.com
824 Highway 101 • Havelock, NC 28532
TEL: 1.800.258.7324 (252.447.7155)
FAX: 1.800.892.3273 (252.447.5502)

Tandemloc designs, manufactures and tests lifting, securing and mobilizing components for all industries. See our website for details and important safety information.
Read all safety labels and instructions prior to use. Product to be used by qualified personnel only.