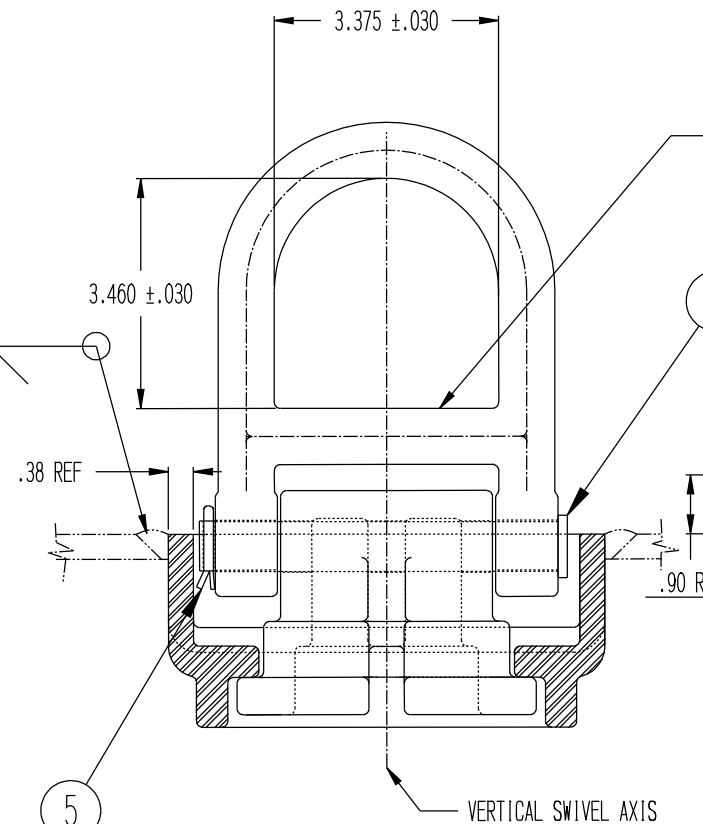
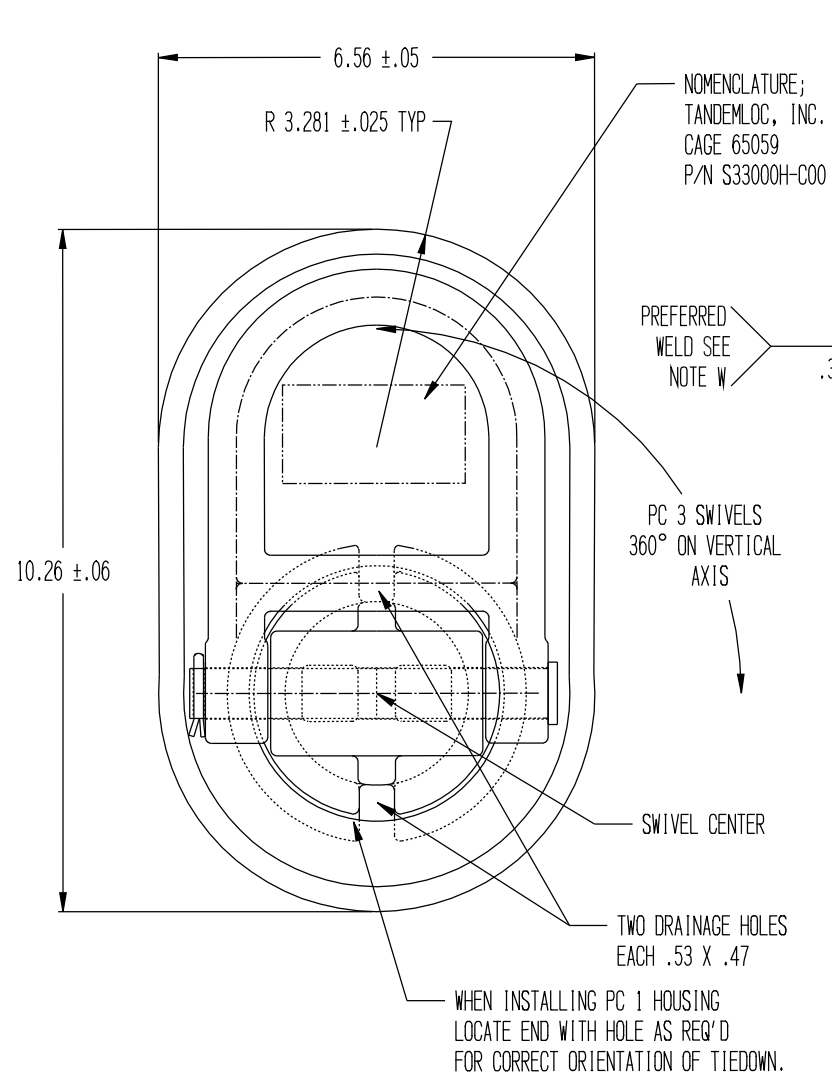
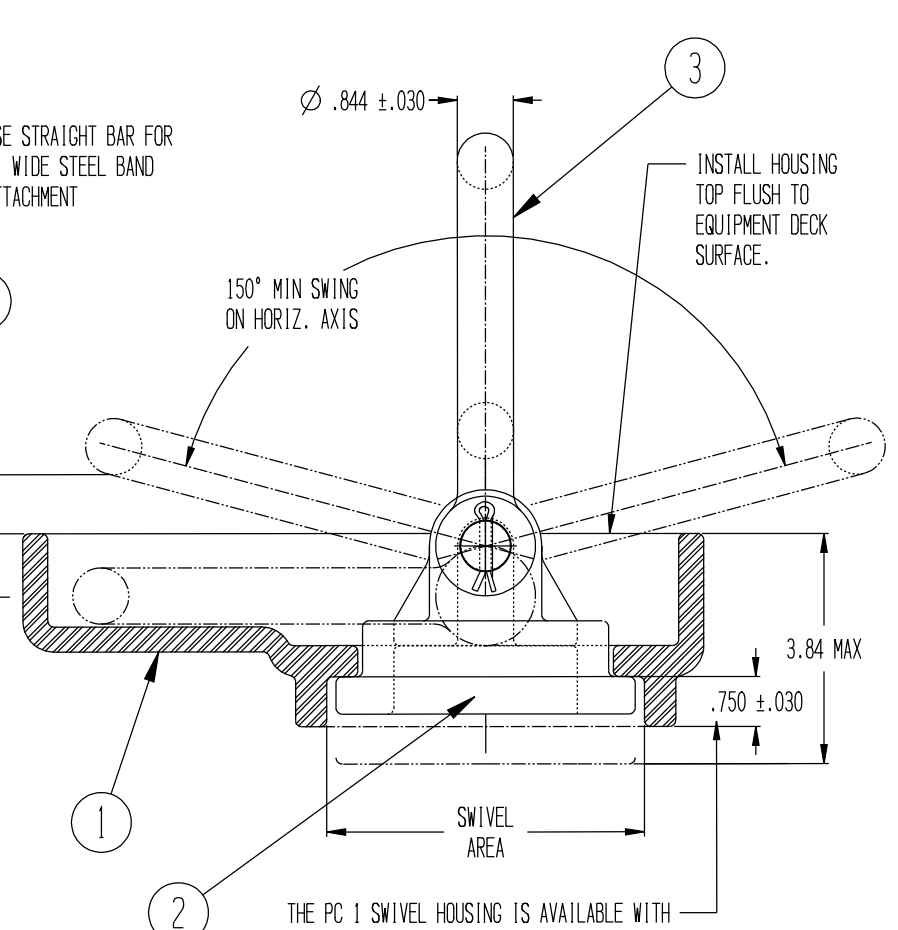


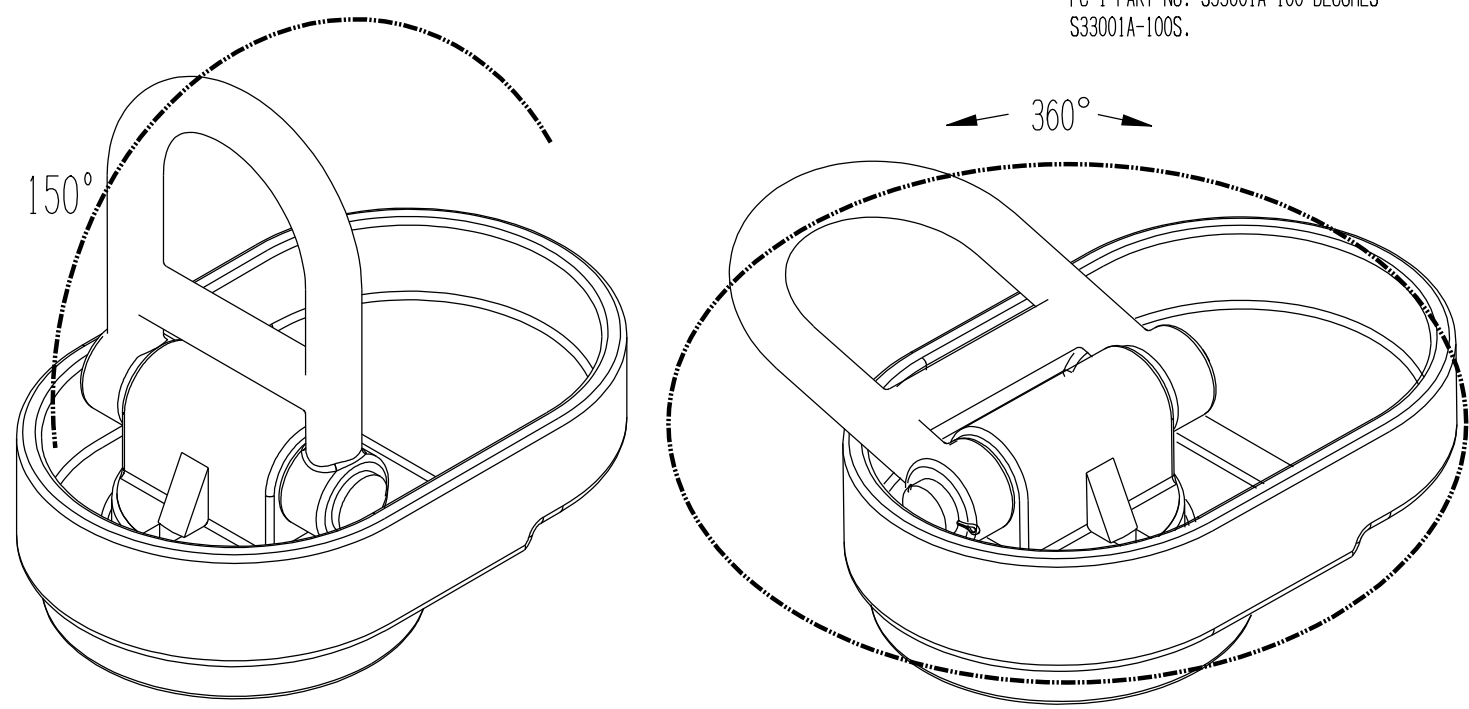
REVISIONS			
REV	DESCRIPTION	DATE	APPROVED
A	3.46 WAS 3.21	01-29-10	DAH
B	ADDED -C02 PART NUMBER	03-20-12	DAH
C	NOTE 2 WAS: MINIMUM YIELD STRENGTH: 50,000 LB. IN ANY DIRECTION ULTIMATE STRENGTH: 66,000 LB. IN ANY DIRECTION	01-31-13	DAH
D	ADDED "KIT" IN PART NO. DESCRIPTION	08-05-14	DAH
E	INCREASED COTTER PIN SIZE FROM .1 TO .15	10-27-15	DAH
F	CORRECTED NOTES	12-05-19	WDD



NOTE W, INSTALLATION WELD:
THE PC 1 SWIVEL BODY IS CAST ASTM A27, GR70-40 STEEL, A LOW CARBON READILY WELDABLE STEEL. INSTALLATION WELDS CAN BE MADE ON ANY PORTION OF THE VERTICAL SIDES WITH A CONTINUOUS 9/32" TO 3/8" FILLET OR BEVEL WELD AROUND THE ENTIRE BODY. THE WELD SYMBOL ABOVE IS PREFERRED.



THE PC 1 SWIVEL HOUSING IS AVAILABLE WITH A SHORTENED BASE IN WHICH THIS .750±.030 DIMENSION IS .338±.030. IN THIS CASE A SUFFIX "-S" IS ADDED TO THE ASSY #. I.E. S33000A-100 BECOMES S33000A-100-S. THE PC 1 PART NO. S33001A-100 BECOMES S33001A-100S.



NOTES:

- PART NO.:
S33000H-100 TIEDOWN ASSEMBLY, SELF COLORED
S33000H-C00 TIEDOWN KIT, 1 SET OF LOOSE COMPONENTS ALL SELF COLORED. (NOTE 4 APPLIES)
S33000H-C01 TIEDOWN KIT, 1 SET OF LOOSE COMPONENTS W/SELF COLORED HOUSING & GALV/DACROKOTE COMPONENTS. (NOTE 4 APPLIES)
S33000H-C02 TIEDOWN KIT, 1 SET OF LOOSE COMPONENTS W/SELF COLORED HOUSING & THERMAL ZINC SPRAYED COMPONENTS. (NOTE 4 APPLIES)
WEIGHT: 21.56 LB.
- MINIMUM YIELD STRENGTH: 50,000 LB. IN ANY DIRECTION
ULTIMATE STRENGTH: 66,000 LB. IN ANY DIRECTION
- CONFORMS TO LARGE CARGO TIEDOWN PROVISION IN MIL STD 209K.
- P/N S33000H-C00, -C01 & -C02:
FOR EASE OF INSTALLATION, COMPONENTS ARE SHIPPED UNASSEMBLED. (S33000H-100 IS SHIPPED ASSEMBLED.)
- THIS TIEDOWN ROTATES 360° ABOUT ITS VERTICAL AXIS AND A MIN OF 150° ABOUT IS HORIZONTAL AXIS. IT IS DESIGNED TO SWIVEL & SWING TO THE TENSION LOAD PLANE OF THE TIEDOWN WITHIN THOSE ANGLES.
- ASSEMBLY: AFTER INSTALLING THE HOUSING (PC 1), ASSEMBLE PC 2 THROUGH 5 INTO THE CONFIGURATION SHOWN ABOVE.
(NOTE: TO INSERT PC 4 PINS, ROTATE PC 2 FOR PROPER CLEARANCE).
- UNDERLINED DIMENSIONS ARE OUT OF SCALE.

QTY	QTY	QTY	QTY	QTY	PART NUMBER AND DESCRIPTION
4					S33004H-300 HINGE PIN, STEEL, THERMAL ZINC SPRAYED
3					S33003H-100 TIEDOWN CLEVIS, THERMAL ZINC SPRAYED
2					S33002H-100 SWIVEL RETAINER, MACH. THERMAL ZINC SPRAYED
4					S33004H-30L HINGE PIN, STEEL, DACROMET/DACROKOTE BLACK
3					S33003H-10B TIEDOWN CLEVIS, GALV/BLACK DACROKOTE
2					S33002H-M0B SWIVEL RETAINER, MACH. GALV/BLACK DACROKOTE
5	1	1	1	1	SP0015XXXXX0100 COTTER PIN, STAINLESS STEEL
4	1	1			S33004H-300 HINGE PIN, STEEL, SELF COLORED
3	1	1			S33003H-100 TIEDOWN CLEVIS, SELF COLORED
2	1	1			S33002H-M00 SWIVEL RETAINER, MACHINED, SELF COLORED
1	1	1			S33001H-100 SWIVEL HOUSING, SELF COLORED

This document contains the proprietary information of Tandemloc, Inc. and your access and use shall be, and is at all times, pursuant to and limited by the Tandemloc, Inc. Terms of Use. You shall not, and shall not encourage, assist, or authorize another party to copy, distribute, publicly display, modify, reverse engineer, decompile, or take any other action to reproduce this document or the information contained herein.

©2019 by Tandemloc, Inc.
Dimensions are subject to manufacturing tolerance and change.

**** DO NOT SIGN IF CHANGES ARE REQUIRED ****

CUSTOMER APPROVAL: _____

DATE: _____

THIS DOCUMENT CONTAINS INFORMATION WHICH IS THE PROPERTY OF THIS COMPANY. DISCLOSURE, IN ANY MANNER, WITHOUT THE WRITTEN AUTHORIZATION OF THIS COMPANY IS EXPRESSLY PROHIBITED

CONTRACT NO.	
APPROVALS	DATE
DRAWN WT	08-23-06
CHECKED	
ENGR	
DESIGN ACTIVITY	

TANDEMLOC

S33000H TIEDOWN, FLUSH MOUNTED

SIZE D	CAGE CODE 65059	DWG NO. SS33000H	REV. F
SCALE		CALC. WT	ACT. WT
		SHEET 1 OF 1	