

TIEDOWN, FLUSH MOUNTED (S33000A TYPE)

Cage Code: 65059 | Drawing No: SS33000A | Revision: T | Sheet: 1 of 1

UNLESS OTHERWISE SPECIFIED, DIMENSIONS ARE IN INCHES
DO NOT SCALE DRAWING

LIST OF MATERIALS

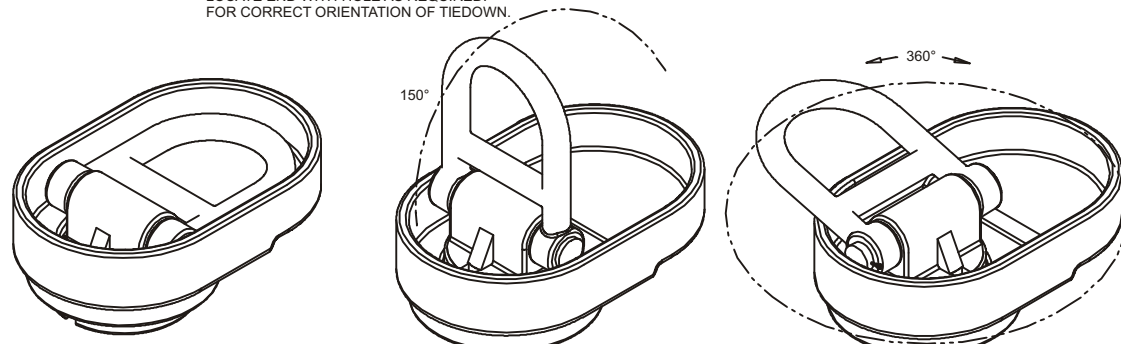
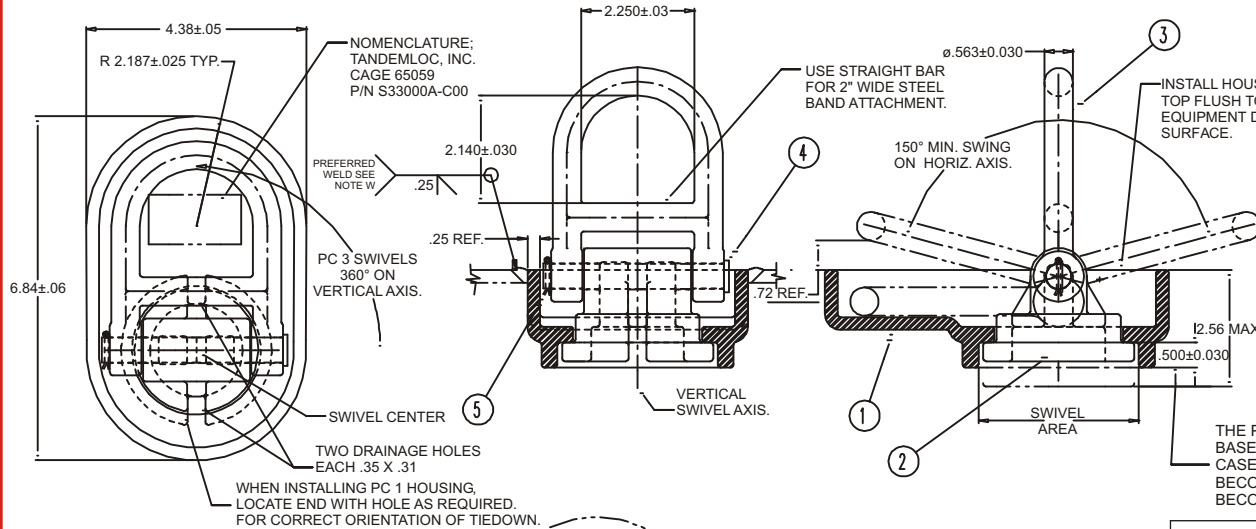
PC #	QTY	-100	-C00	-C01	-C02	PART # AND DESCRIPTION
						S33002A-2GB SWIV. RET., TWO HALVE SET, GALV., BL. DIMET.
						S33004A-3DL HINGE PIN, STEEL DACROMET/DACROCOTE BLACK
						S33003A-1GB TIEDOWN CLEVIS, GALV./BLACK DIMETCOTE
						S33002A-MGB SWIVEL RETAINER, MACH. GALV/BLACK DIMETCOTE
						SCP0005XXXX0075 COTTER PIN, STAINLESS STEEL
						S33004A-300 HINGE PIN, STEEL SELF COLORED
						S33003A-100 TIEDOWN CLEVIS, SELF COLORED
						S33002A-M00 SWIVEL RETAINER, MACHINED, SELF COLORED
						S33001A-100 SWIVEL HOUSING, SELF COLORED
PC #	QTY	-100	-C00	-C01	-C02	PART # AND DESCRIPTION

NOTES:

1. PART NO:
S33000A-100 TIEDOWN ASSEMBLY, SELF COLORED
S33000A-C00 TIEDOWN KIT, 1 SET OF LOOSE COMPONENTS ALL SELF COLORED. (NOTE 4 APPLIES)
S33000A-C01 TIEDOWN KIT, 1 SET OF LOOSE COMPONENTS W/ SELF COLORED HOUSING & GALV/DACROCOTE COMPONENTS. (NOTE 4 APPLIES)
S33000A-C02 TIEDOWN KIT, 1 SET OF LOOSE COMPONENTS W/ SELF COLORED HOUSING & GALV/DACROCOTE COMPONENTS AND SELF SWIVEL RETAINER (NOTE 4 APPLIES)
WEIGHT 6.37 LB.
2. LOAD CAPACITY - 10,000 LB. (SINGLE, TENSION, WITHOUT YIELD) SAFETY FACTOR TO ULTIMATE STRENGTH (15,000 LB.) IS 1.5 MIN.
3. TIEDOWN CONFORMS TO CLASS 4, MIL STD 209H & CARGO BED TIEDOWN PROVISION MIL STD 209J & 209K.
4. P/N S33000A-C00, -C01 & -C02:
FOR EASE OF INSTALLATION, COMPONENTS ARE SHIPPED UNASSEMBLED. (S33000A-100 IS SHIPPED ASSEMBLED.)
5. THIS TIEDOWN ROTATES 360° ABOUT ITS VERTICAL AXIS AND A MIN OF 150° ABOUT ITS HORIZONTAL AXIS. IT IS DESIGNED TO SWIVEL & SWING TO THE TENSION LOAD PLANE OF THE TIEDOWN WITHIN THOSE ANGLES.
6. ASSEMBLY: AFTER INSTALLING THE HOUSING (PC1), ASSEMBLE PC 2 TO 5 INTO THE CONFIGURATION SHOWN ABOVE. (NOTE: TO INSERT PC 4 PINS, ROTATE PC 2 FOR PROPER CLEARANCE.)
7. UNDERLINED DIMENSIONS ARE OUT OF SCALE.

NOTE W. INSTALLATION WELD:
THE PC 1 SWIVEL BODY IS CAST ASTM A27, GR70-40 STEEL, A LOW CARBON READILY WELDABLE STEEL. INSTALLATION WELDS CAN BE MADE ON ANY PORTION OF THE VERTICAL SIDES WITH A CONTINUOUS 3/16 TO 1/4" FILLET OR BEVEL WELD AROUND THE ENTIRE BODY. THE WELD SYMBOL ABOVE IS PREFERRED.

THE PC 1 SWIVEL HOUSING IS AVAILABLE WITH A SHORTENED BASE IN WHICH THIS .500±.030 DIMENSION IS .225±.030. IN THIS CASE A SUFFIX "-S" IS ADDED TO THE ASSY #. (IE. S33000A-100 BECOMES S33000A-100-S). THE PC 1 PART NO. S33001A-100 BECOMES S33001A-100S.



REVISIONS

REV	DESCRIPTION	DATE	APP.
F	2.576 MAX WAS 2.50 MAX., ADDED SHORTEN BASE P/N & DATA	06/23/04	MD
G	PC 2 FOR -100 & -C00 WAS -100, FOR -C01; MACH. ADDED TO DESC.	09/21/04	MD
H	ADDED MORE WELD INSTALLATION DATA & DEFINED STRENGTH DATA	02/27/06	MD
I	CHANGED PART DESCRIPTION IN TITLEBLOCK	07/27/06	WT
J	ADDED -C02 P/N, ADDED S22002A-2GB COMPONENT IN L/M	2/21/07	ML
K	L/M: QTY -C01, BLANK IN S33001A-100 ROW, WAS 1 ADDED PART #S33001A-100 TO PARTS -C01 & -C02. REMOVED PART #S33002A-MGB FROM PART -C02 AND ADDED SCP0005XXXX0075	05/01/07	WT
L	SEE ECO 07-030	07/26/07	DAH
M	ADDED SHEET 2 AND PART -C03	8/18/08	WT
N	ADDED NOTE 8 AND REMOVED PC 6 ON SHEET 2	4/14/09	DAH
O	ADDED SHEET 3 WITH -ISO AND -CSO PARTS	3/04/10	DAH
P	SEE SHEET 2	5/25/10	DAH
Q	SEE SHEET 2	6/09/10	DAH
R	ADDED SHEET 4 WITH -C04	12/16/10	DAH
S	SEE SHEET 4	12/18/12	DAH
T	ADDED "KIT" IN PART NO. DESCRIPTION	8/05/14	DAH

To avoid lifter failure, potential death and property damage, never exceed WLL (Working Load Limit)

This document contains the proprietary information of Tandemloc, Inc. and your access and use shall be, and is at all times, pursuant to and limited by the Tandemloc, Inc. Terms of Use.

You shall not, and shall not encourage, assist, or authorize another party to copy, distribute, publically display, modify, reverse engineer, decompile, or take any other action to reproduce or replicate this document or the information contained herein. © Copyright 2012 by Tandemloc, Inc.

Dimensions are subject to manufacturing tolerance and change.



Email: info@tandemloc.com • www.tandemloc.com
824 Highway 101 • Havelock, NC 28532
TEL: 1.800.258.7324 (252.447.7155)
FAX: 1.800.892.3273 (252.447.5502)

Tandemloc designs, manufactures and tests lifting, securing and mobilizing components for all industries. See our website for details and important safety information.
Read all safety labels and instructions prior to use. Product to be used by qualified personnel only.