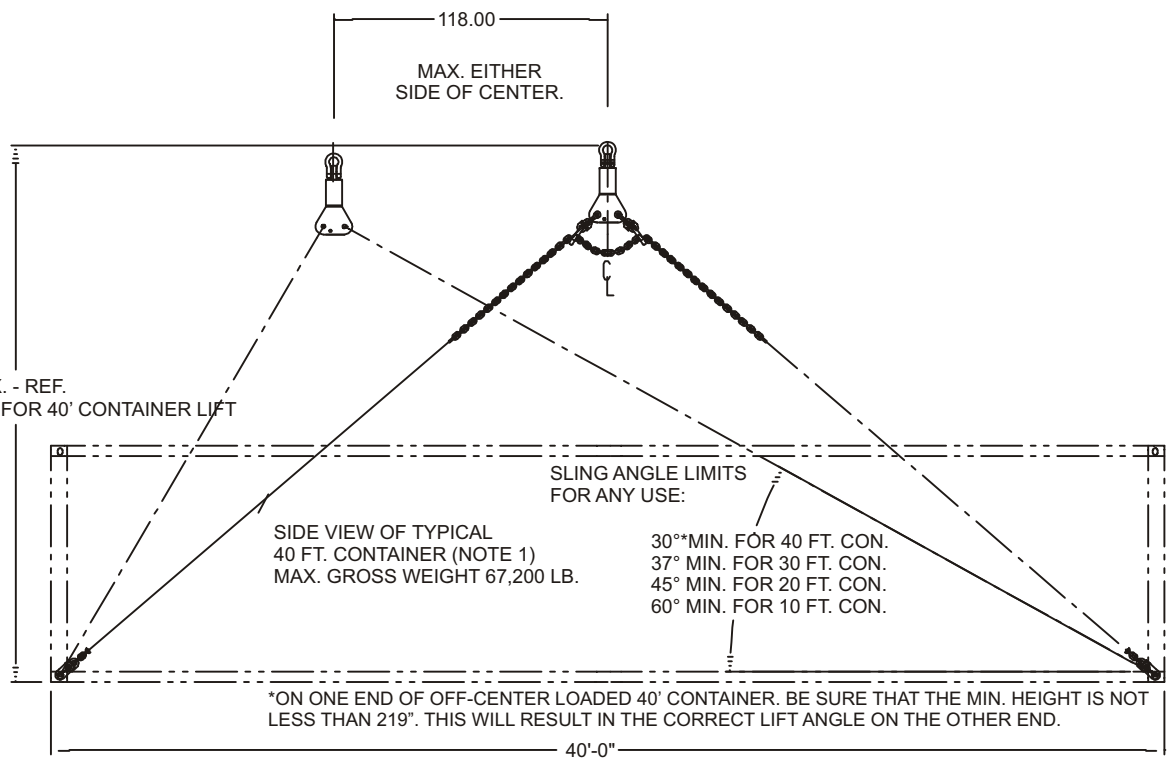
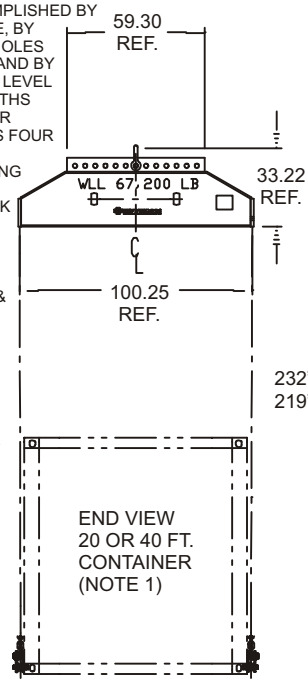


# 40 FT./20 FT. CONTAINER BOTTOM LIFT SLING WITH UNIVERSAL MANUAL LEVELING, WLL 30 LT (Q2500AA-400D)

**Cage Code: 65059 | Drawing No: SQ2500AA-400D | Revision: D | Sheet: 1 of 3**  
UNLESS OTHERWISE SPECIFIED, DIMENSIONS ARE IN INCHES

**NOTE:**

1. THE CONTAINERS NOTED ON THIS DWG. ARE TYPICAL ISO FREIGHT CONTAINERS AS DESCRIBED IN ISO 668:1988(E) DESIGNATION  
 1AAA, 1AA, 1A, 1AX - ALL "40 FT" CONTAINERS  
 1CC, 1C, 1CX - ALL "20 FT" CONTAINERS (19'-10" 1/2")  
 THIS SLING CAN ALSO LIFT 1BB, 1B, 1BX "30 FT." CONTAINERS (29'-11 1/4") & 1D & 1DX "10 FT." CONTAINERS (9'-9 3/4") AT THEIR MAX LOAD RATING.
2. LOAD LEVELING OF THIS SLING IS ACCOMPLISHED BY MANUALLY MOVING THE TOP SHACKLE; IE, BY PLACING ITS BOLT INTO ONE OF THE 13 HOLES PROVIDED FOR TRANSVERSE LEVELING AND BY ADJUSTING THE CHAIN LEG LENGTHS TO LEVEL LONGITUDINALLY. KEEP THE CHAIN LENGTHS MATCHED ON EACH SIDE. CHAIN IS COLOR MARKED AT CENTER AND EVERY 10 LINKS FOUR PLACES ON EACH SIDE OF CENTER.
3. THE WORK LOAD LIMIT (WLL) OF THIS SLING IS 67,200 LB.
4. BEAM - PROOF TESTED TO 125% OF WORK LOAD LIMIT (WLL);  
 CHAIN & FITTINGS - TESTED TO 200% OF THEIR RATED WLL.
5. THIS SLING ASSEMBLY CONFORMS TO ANSI B30.9-1996, ANSI B30.19-199, B30.20 & I.S.O. 3874 FGT. CONT. HANDLING.
6. MATERIAL: STEEL WITH PAINT COLOR AS SPECIFIED BY CUSTOMER. CHAIN & CONNECTOR LINK PINS/SPACERS ARE NOT PAINTED
7. WEIGHT: 1,534 LB, 1,720 LB. WITH PC 9.
8. ALL DIMENSIONS SUBJECT TO MFG TOL.
9. PC 9 IS THE METAL SHIPPING CONTAINER PROVIDED WITH EACH SLING ASSEMBLY.



REVISIONS			
REV	DESCRIPTION	DATE	APPROVED
A	ADDED SHEET 2 & ADDED VISO CONN DATA	09/09/05	MD
B	+MIN. HEIGHT OF 40' CTR LIFT *ASTERISK NOTE	04/04/06	MD
C	REVISED DRAWING TO SHOW HOOK DIRECTION FACES OUT	9/20/07	DAH
D	REMOVED "COMMERCIAL STYLE" FROM THE TITLE BLOCK	6/3/09	DAH

To avoid lifter failure, potential death and property damage, never exceed WLL (Working Load Limit)

This document contains the proprietary information of Tandemloc, Inc. and your access and use shall be, and is at all times, pursuant to and limited by the Tandemloc, Inc. Terms of Use.

You shall not, and shall not encourage, assist, or authorize another party to copy, distribute, publically display, modify, reverse engineer, decompile, or take any other action to reproduce or replicate this document or the information contained herein. © Copyright 2012 by Tandemloc, Inc.

Dimensions are subject to manufacturing tolerance and change.

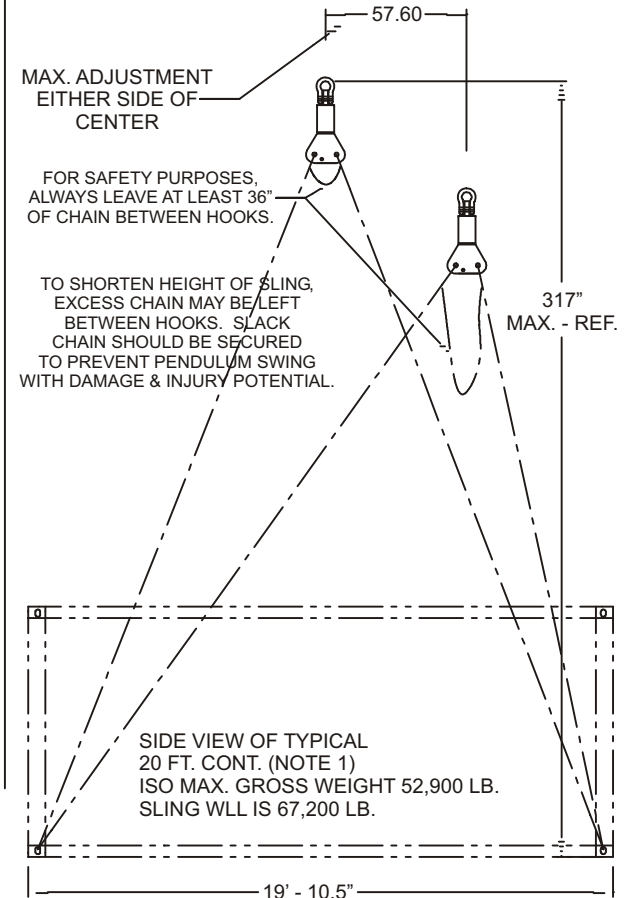
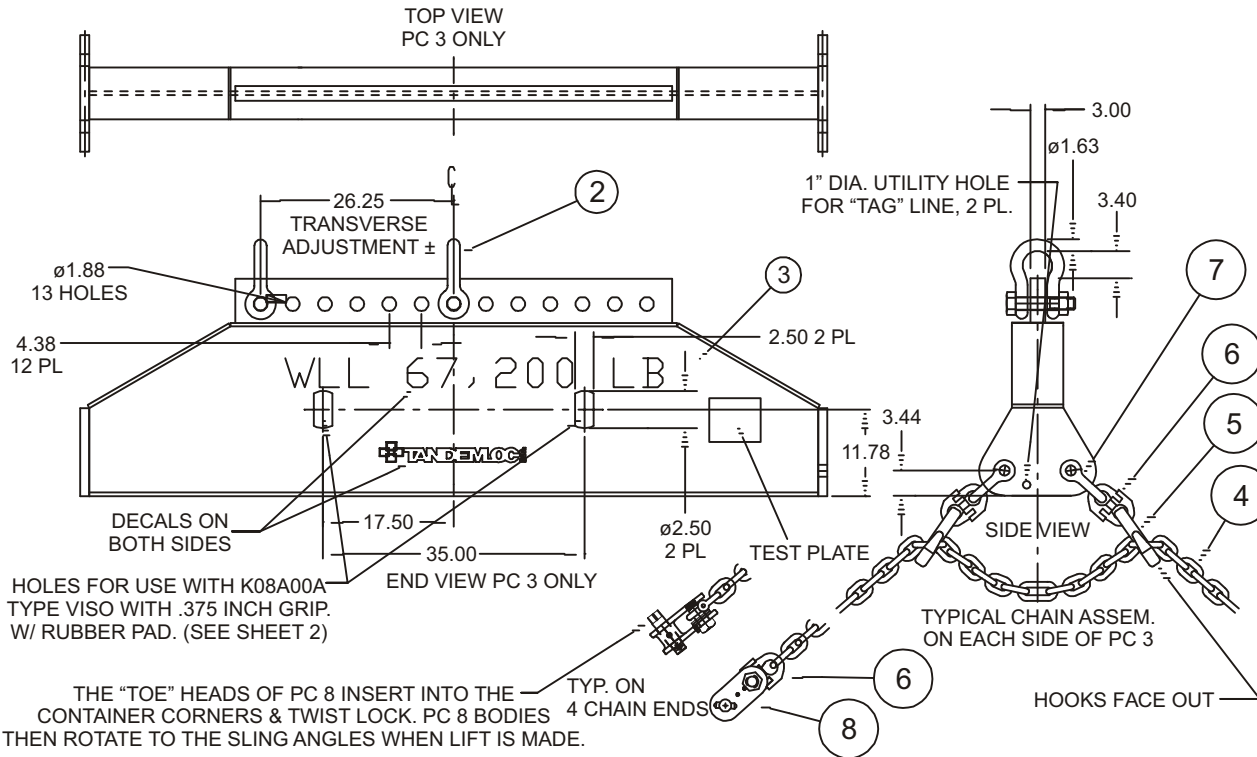


Email: [info@tandemloc.com](mailto:info@tandemloc.com) • [www.tandemloc.com](http://www.tandemloc.com)  
 824 Highway 101 • Havelock, NC 28532  
**TEL: 1.800.258.7324 (252.447.7155)**  
**FAX: 1.800.892.3273 (252.447.5502)**

Tandemloc designs, manufactures and tests lifting, securing and mobilizing components for all industries. See our website for details and important safety information.  
 Read all safety labels and instructions prior to use. Product to be used by qualified personnel only.

# 40 FT./20 FT. CONTAINER BOTTOM LIFT SLING WITH UNIVERSAL MANUAL LEVELING, WLL 30 LT (Q2500AA-400D)

Cage Code: 65059 | Drawing No: SQ2500AA-400D | Revision: D | Sheet: 1 of 3



HOLES FOR USE WITH K08A00A TYPE VISO WITH .375 INCH GRIP. W/ RUBBER PAD. (SEE SHEET 2)

THE "TOE" HEADS OF PC 8 INSERT INTO THE CONTAINER CORNERS & TWIST LOCK. PC 8 BODIES THEN ROTATE TO THE SLING ANGLES WHEN LIFT IS MADE.

### LIST OF MATERIALS

PC. NO.	QUAN	DESCRIPTION
9	1	Q2500AA-B METAL SHIPPING CONTAINER
8	4	416000B TYPE ROTARY LIFT LUG, THERM. ZINC CT
7	4	Q2500AA-400 SHACKLE W/ BOLT, NUT, COTTER
6	8	Q2500AA-400 ALLOY CHAIN CONNECTOR, PAINTED
5	4	Q2500AA-400 CHAIN SHORTENER, PAINTED
4	2	Q2500AA-400-4 GR80 STL CHAIN, CUT 600"±4" LG
3	1	Q2505DD LOAD LEVELER ASSEMBLY, PAINTED
2	1	Q2500AA-400 SHACKLE, W/ BOLT, NUT, COTTER
-	-	-

REVISIONS		
REV	DESCRIPTION	DATE APPROVED
B	+MIN. HEIGHT OF 40' CTR LIFT *ASTERISK NOTE	04/04/06 MD
C	REVISED DRAWING TO SHOW HOOK DIRECTION FACES OUT	9/20/07 DAH
D	REMOVED "COMMERCIAL STYLE" FROM THE TITLE BLOCK	6/3/09 DAH

To avoid lifter failure, potential death and property damage, never exceed WLL (Working Load Limit)

This document contains the proprietary information of Tandemloc, Inc. and your access and use shall be, and is at all times, pursuant to and limited by the Tandemloc, Inc. Terms of Use.

You shall not, and shall not encourage, assist, or authorize another party to copy, distribute, publically display, modify, reverse engineer, decompile, or take any other action to reproduce or replicate this document or the information contained herein. © Copyright 2012 by Tandemloc, Inc.

Dimensions are subject to manufacturing tolerance and change.



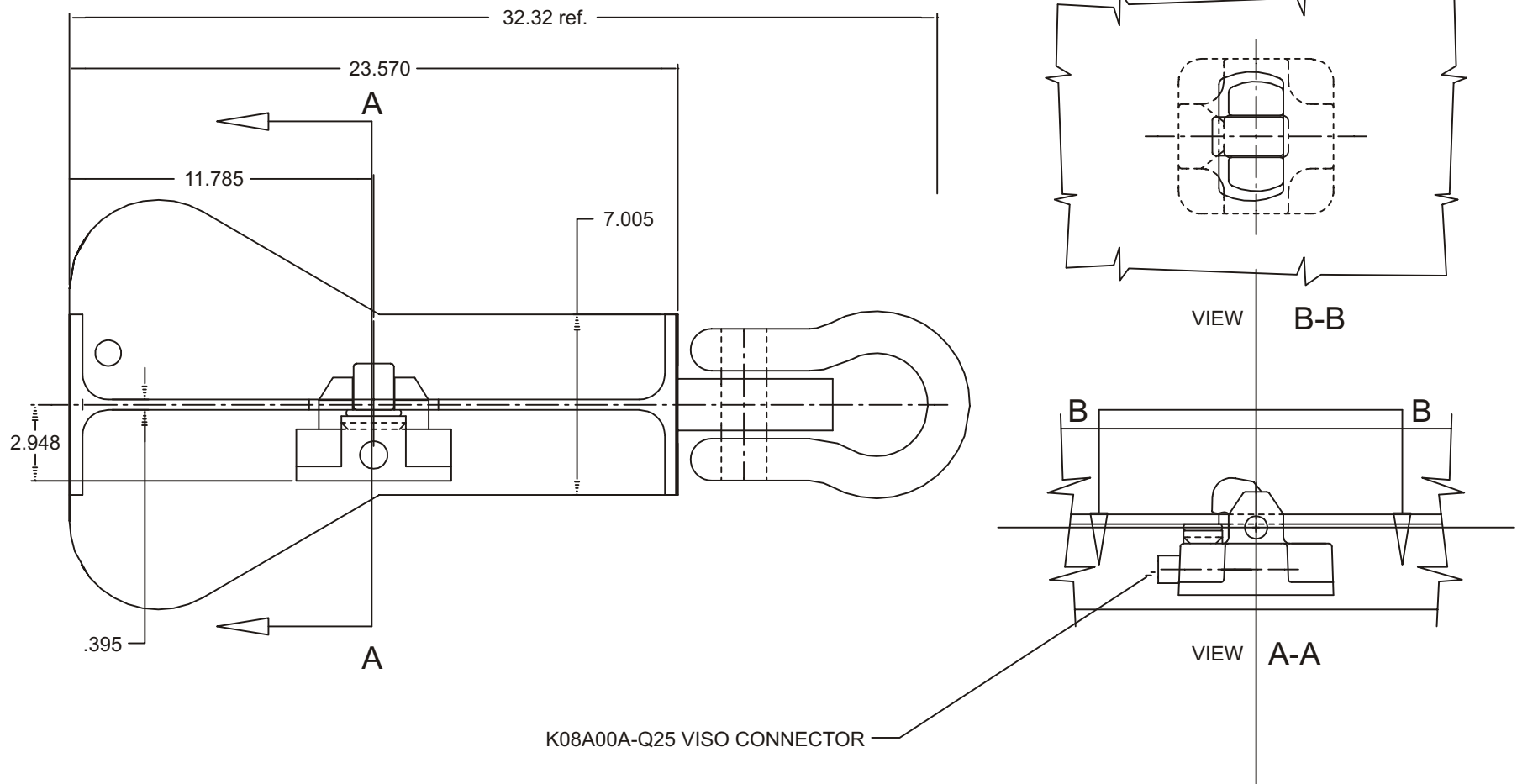
Email: [info@tandemloc.com](mailto:info@tandemloc.com) • [www.tandemloc.com](http://www.tandemloc.com)  
824 Highway 101 • Havelock, NC 28532  
TEL: 1.800.258.7324 (252.447.7155)  
FAX: 1.800.892.3273 (252.447.5502)

Tandemloc designs, manufactures and tests lifting, securing and mobilizing components for all industries. See our website for details and important safety information.  
Read all safety labels and instructions prior to use. Product to be used by qualified personnel only.

# 40 FT./20 FT. CONTAINER BOTTOM LIFT SLING WITH UNIVERSAL MANUAL LEVELING, WLL 30 LT (Q2500AA-400D)

Cage Code: 65059 | Drawing No: SQ2500AA-400D | Revision: D | Sheet: 1 of 3

UNLESS OTHERWISE SPECIFIED, DIMENSIONS ARE IN INCHES



To avoid lifter failure, potential death and property damage, never exceed WLL (Working Load Limit)

This document contains the proprietary information of Tandemloc, Inc. and your access and use shall be, and is at all times, pursuant to and limited by the Tandemloc, Inc. Terms of Use.

You shall not, and shall not encourage, assist, or authorize another party to copy, distribute, publically display, modify, reverse engineer, decompile, or take any other action to reproduce or replicate this document or the information contained herein. © Copyright 2012 by Tandemloc, Inc.

Dimensions are subject to manufacturing tolerance and change.



Email: [info@tandemloc.com](mailto:info@tandemloc.com) • [www.tandemloc.com](http://www.tandemloc.com)

824 Highway 101 • Havelock, NC 28532

TEL: 1.800.258.7324 (252.447.7155)

FAX: 1.800.892.3273 (252.447.5502)

Tandemloc designs, manufactures and tests lifting, securing and mobilizing components for all industries. See our website for details and important safety information.

Read all safety labels and instructions prior to use. Product to be used by qualified personnel only.