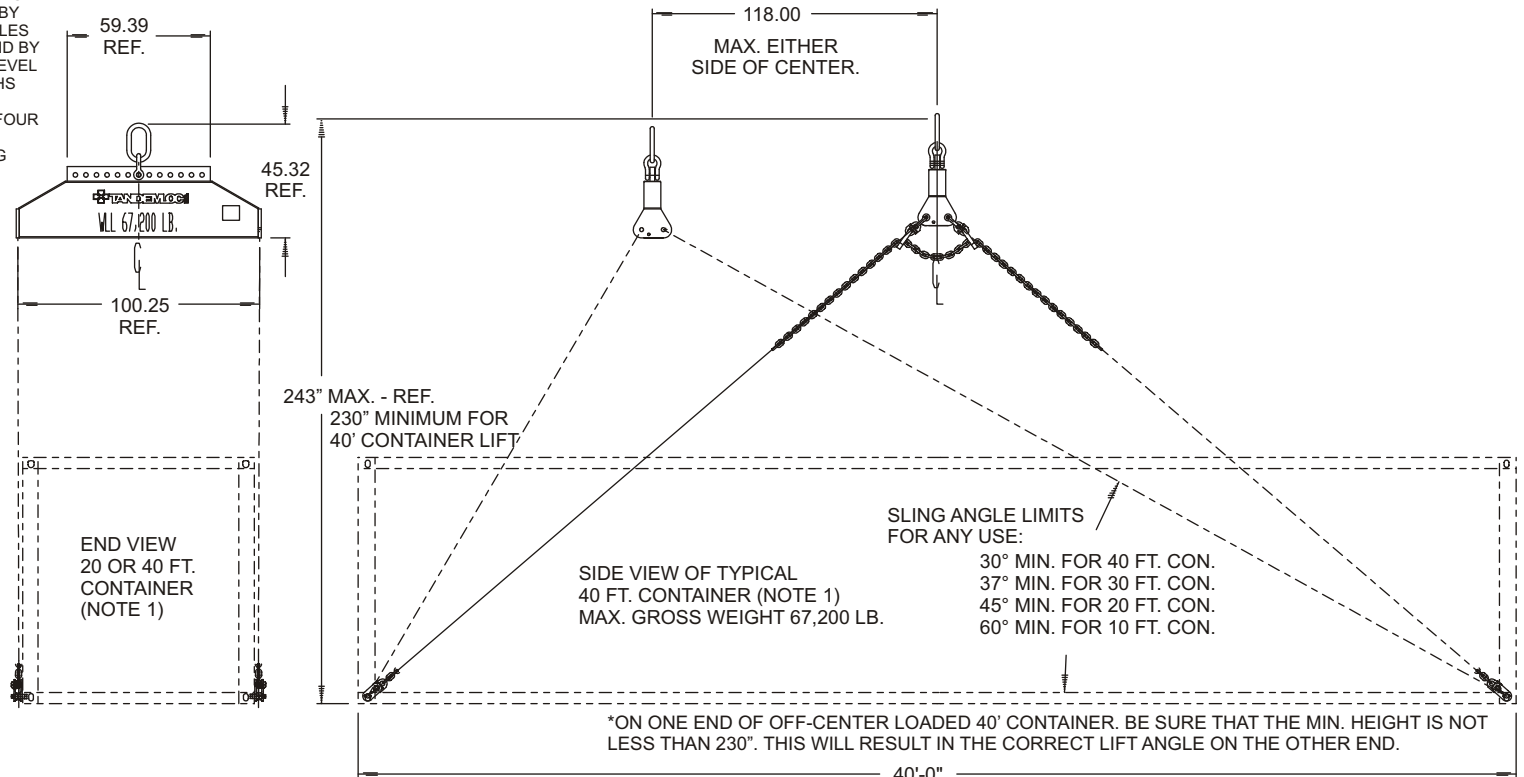


# COMMERCIAL STYLE 40 FT./20 FT. CONTAINER BOTTOM LIFT SLING WITH UNIVERSAL MANUAL LEVELING, WLL 30 LT (Q2500AA-400)

Cage Code: 65059 | Drawing No: SQ2500AA-400 | Revision: K | Sheet: 1 of 2  
UNLESS OTHERWISE SPECIFIED, DIMENSIONS ARE IN INCHES

**NOTE:**

- THE CONTAINERS NOTED ON THIS DWG. ARE TYPICAL ISO FREIGHT CONTAINERS AS DESCRIBED IN ISO 668:1988(E) DESIGNATION  
1AAA, 1AA, 1A, 1AX - ALL "40 FT" CONTAINERS  
1CC, 1C, 1CX - ALL "20 FT" CONTAINERS (19'-10" 1/2")  
THIS SLING CAN ALSO LIFT 1BB, 1B, 1BX "30 FT." CONTAINERS (29'-11 1/4") & 1D & 1DX "10 FT." CONTAINERS (9'-9 3/4") AT THEIR MAX LOAD RATING.
- LOAD LEVELING OF THIS SLING IS ACCOMPLISHED BY MANUALLY MOVING THE TOP SHACKLE; IE, BY PLACING ITS BOLT INTO ONE OF THE 13 HOLES PROVIDED FOR TRANSVERSE LEVELING AND BY ADJUSTING THE CHAIN LEG LENGTHS TO LEVEL LONGITUDINALLY. KEEP THE CHAIN LENGTHS MATCHED ON EACH SIDE. CHAIN IS COLOR MARKED AT CENTER AND EVERY 10 LINKS FOUR PLACES ON EACH SIDE OF CENTER.
- THE WORK LOAD LIMIT (WLL) OF THIS SLING IS 67,200 LB.
- PROOF TESTED TO 125% OF WORK LOAD LIMIT (WLL).
- THIS SLING ASSEMBLY CONFORMS TO ANSI B30.9-1996, ANSI B30.19-199, B30.20 & I.S.O. 3874 FGT. CONT. HANDLING.
- MATERIAL: STEEL WITH CARC PAINT MIL-P-64159, MIL-C-53039 OR MIL-C-46168, COLOR AS REQUIRED BY ORDERING ACTIVITY. THE CHAIN & CONNECTOR LINK PINS/SPACERS ARE NOT PAINTED. FOR COMML PRIMED & PAINT COATING SEE NOTE 10.
- WEIGHT: 1,563 LB, 1,748 LB. WITH PC 9.
- ALL DIMENSIONS SUBJECT TO MFG TOL.
- PC 9 IS THE METAL SHIPPING CONTAINER PROVIDED WITH EACH SLING ASSEMBLY.



REVISIONS				
REV	DESCRIPTION	DATE	APPROVED	
H	ADDED NSN NO. FOR CARC PAINTED PRODUCT	12/22/05	MD	
I	230" MIN ADDED FOR SLING HEIGHT FOR 40' CONTNRS	04/04/06	MD	
J	REVISED DRAWING TO SHOW HOOK DIRECTION FACES OUT	9/20/07	DAH	
K	REMOVED NOTE 10 FOR COMMERCIAL PARTS	8/07/14	DAH	

To avoid lifter failure, potential death and property damage, never exceed WLL (Working Load Limit)

This document contains the proprietary information of Tandemloc, Inc. and your access and use shall be, and is at all times, pursuant to and limited by the Tandemloc, Inc. Terms of Use.

You shall not, and shall not encourage, assist, or authorize another party to copy, distribute, publically display, modify, reverse engineer, decompile, or take any other action to reproduce or replicate this document or the information contained herein. © Copyright 2012 by Tandemloc, Inc.

Dimensions are subject to manufacturing tolerance and change.



Email: [info@tandemloc.com](mailto:info@tandemloc.com) • [www.tandemloc.com](http://www.tandemloc.com)  
824 Highway 101 • Havelock, NC 28532  
TEL: 1.800.258.7324 (252.447.7155)  
FAX: 1.800.892.3273 (252.447.5502)

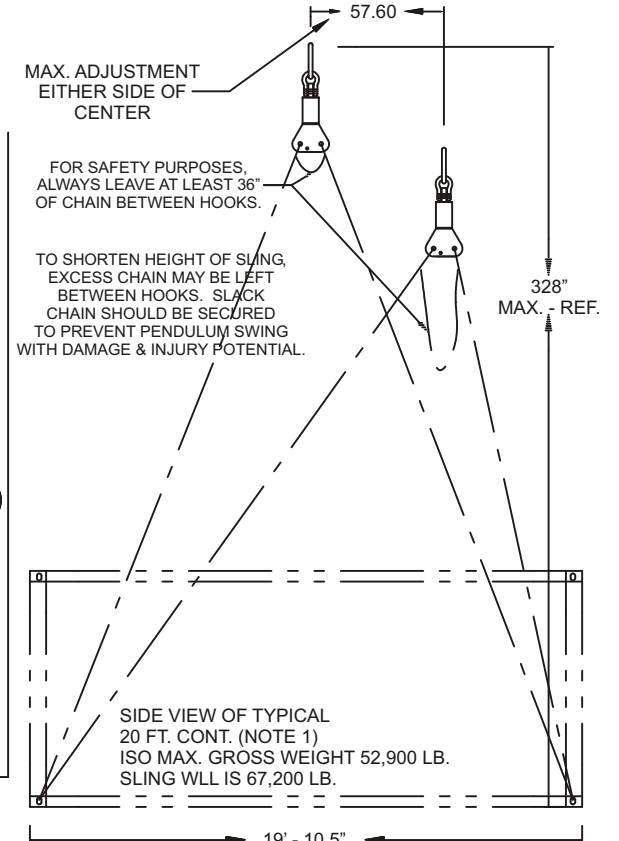
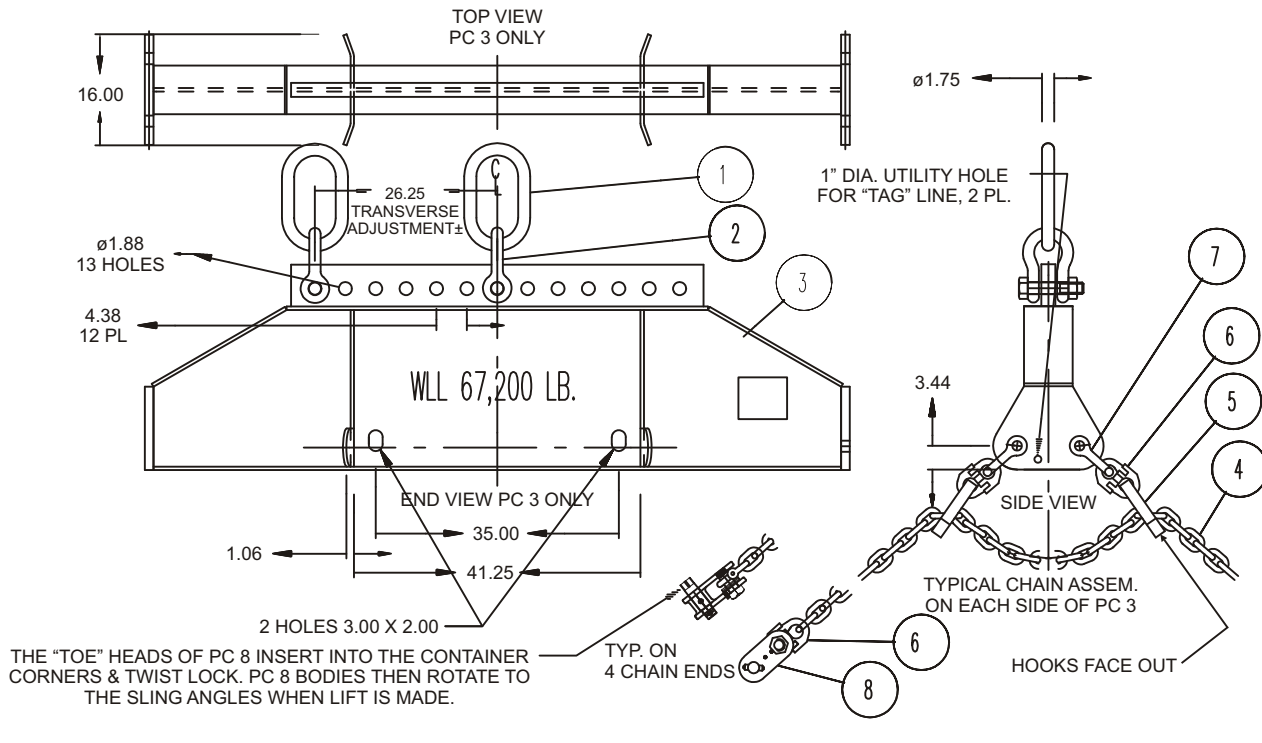
Tandemloc designs, manufactures and tests lifting, securing and mobilizing components for all industries. See our website for details and important safety information.

Read all safety labels and instructions prior to use. Product to be used by qualified personnel only.

# COMMERCIAL STYLE 40 FT./20 FT. CONTAINER BOTTOM LIFT SLING WITH UNIVERSAL MANUAL LEVELING, WLL 30 LT (Q2500AA-400)

Cage Code: 65059 | Drawing No: SQ2500AA-400 | Revision: K | Sheet: 2 of 2

UNLESS OTHERWISE SPECIFIED, DIMENSIONS ARE IN INCHES



## LIST OF MATERIALS

PC. NO.	QUAN	DESCRIPTION
9	1	Q2500AA-B METAL SHIPPING CONTAINER
8	4	416000B-XPA ROTARY LIFT LUG, CARC PAINT
7	4	Q2500AA-400-7 SHACKLE W/ BOLT, NUT, COTTER
6	8	Q2500AA-400-6 ALLOY CHAIN CONNECTOR, PAINTED
5	4	Q2500AA-400-5 CHAIN SHORTENER, PAINTED
4	2	Q2500AA-400-4 GR80 STL CHAIN, CUT 600"±4" LG
3	1	Q2505DD-1PA LOAD LEVELER ASSEMBLY, PAINTED
2	1	Q2500AA-400-2 SHACKLE, W/ BOLT, NUT, COTTER
1	1	Q2500AA-400-1 LIFT RING 1.75 DIA. X6 X12 MIN.
		FOR -400 ONLY, -400-G OR -W USE COMMML PAINT

REV	DESCRIPTION	DATE	APPROVED
E	CLARIFIED L/M P/NS BY ADDING PREFIX Q2500AA	03/08/04	MD
F	ADDED PC 9, ISO 3874, MODIFIED NOTE 9 & NOTE 4	03/12/04	MD
G	ADDED NOTE 10., MOD. NOTE 8 FOR COMMML. PAINT.	09/06/05	MD
H	ADDED NSN NO. FOR CARC PAINTED PRODUCT	12/22/05	MD
I	230" MIN ADDED FOR SLING HEIGHT FOR 40' CONTNRS	04/04/06	MD
J	REVISED DRAWING TO SHOW HOOK DIRECTION	9/20/07	DAH
K	FACES OUT REMOVED NOTE 10 FOR COMMERCIAL PARTS	8/07/14	DAH

To avoid lifter failure, potential death and property damage, never exceed WLL (Working Load Limit)

This document contains the proprietary information of Tandemloc, Inc. and your access and use shall be, and is at all times, pursuant to and limited by the Tandemloc, Inc. Terms of Use.

You shall not, and shall not encourage, assist, or authorize another party to copy, distribute, publically display, modify, reverse engineer, decompile, or take any other action to reproduce or replicate this document or the information contained herein. © Copyright 2012 by Tandemloc, Inc.

Dimensions are subject to manufacturing tolerance and change.



Email: [info@tandemloc.com](mailto:info@tandemloc.com) • [www.tandemloc.com](http://www.tandemloc.com)  
 824 Highway 101 • Havelock, NC 28532  
 TEL: 1.800.258.7324 (252.447.7155)  
 FAX: 1.800.892.3273 (252.447.5502)

Tandemloc designs, manufactures and tests lifting, securing and mobilizing components for all industries. See our website for details and important safety information.  
 Read all safety labels and instructions prior to use. Product to be used by qualified personnel only.