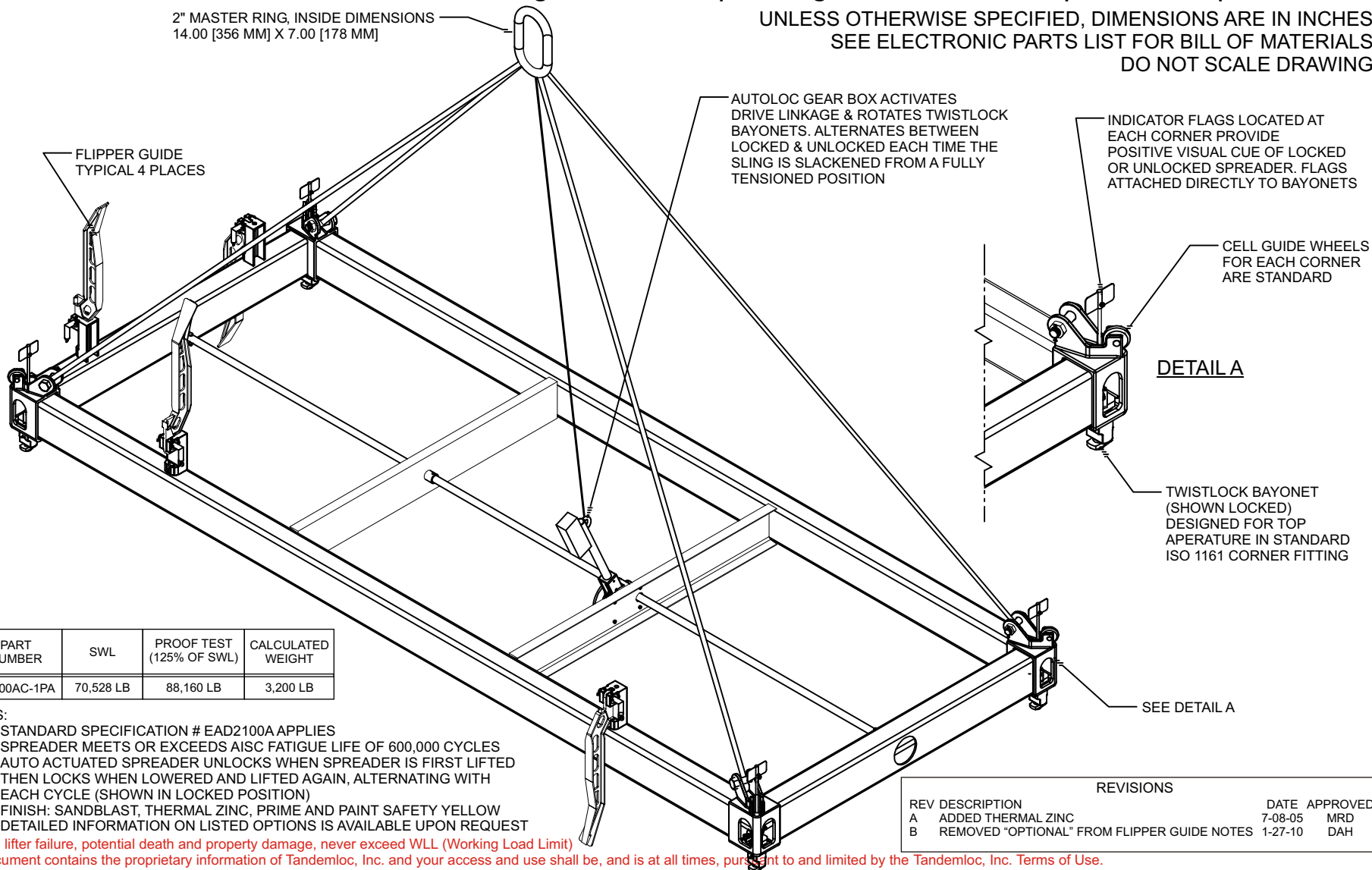


24' AUTOLOC SPREADER (N3100AC-1PA)

Cage Code: 65059 | Drawing No: SN3100AC-1PA | Revision: B | Sheet: 1 of 2

UNLESS OTHERWISE SPECIFIED, DIMENSIONS ARE IN INCHES
SEE ELECTRONIC PARTS LIST FOR BILL OF MATERIALS
DO NOT SCALE DRAWING



PART NUMBER	SWL	PROOF TEST (125% OF SWL)	CALCULATED WEIGHT
N3100AC-1PA	70,528 LB	88,160 LB	3,200 LB

NOTES:

1. STANDARD SPECIFICATION # EAD2100A APPLIES
2. SPREADER MEETS OR EXCEEDS AISC FATIGUE LIFE OF 600,000 CYCLES
3. AUTO ACTUATED SPREADER UNLOCKS WHEN SPREADER IS FIRST LIFTED THEN LOCKS WHEN LOWERED AND LIFTED AGAIN, ALTERNATING WITH EACH CYCLE (SHOWN IN LOCKED POSITION)
4. FINISH: SANDBLAST, THERMAL ZINC, PRIME AND PAINT SAFETY YELLOW
5. DETAILED INFORMATION ON LISTED OPTIONS IS AVAILABLE UPON REQUEST

To avoid lifter failure, potential death and property damage, never exceed WLL (Working Load Limit)

This document contains the proprietary information of Tandemloc, Inc. and your access and use shall be, and is at all times, pursuant to and limited by the Tandemloc, Inc. Terms of Use.

You shall not, and shall not encourage, assist, or authorize another party to copy, distribute, publically display, modify, reverse engineer, decompile, or take any other action to reproduce or replicate this document or the information contained herein. © Copyright 2012 by Tandemloc, Inc.

Dimensions are subject to manufacturing tolerance and change.

REVISIONS			
REV	DESCRIPTION	DATE	APPROVED
A	ADDED THERMAL ZINC	7-08-05	MRD
B	REMOVED "OPTIONAL" FROM FLIPPER GUIDE NOTES	1-27-10	DAH



Email: info@tandemloc.com • www.tandemloc.com
824 Highway 101 • Havelock, NC 28532
TEL: 1.800.258.7324 (252.447.7155)
FAX: 1.800.892.3273 (252.447.5502)

Tandemloc designs, manufactures and tests lifting, securing and mobilizing components for all industries. See our website for details and important safety information.

Read all safety labels and instructions prior to use. Product to be used by qualified personnel only.

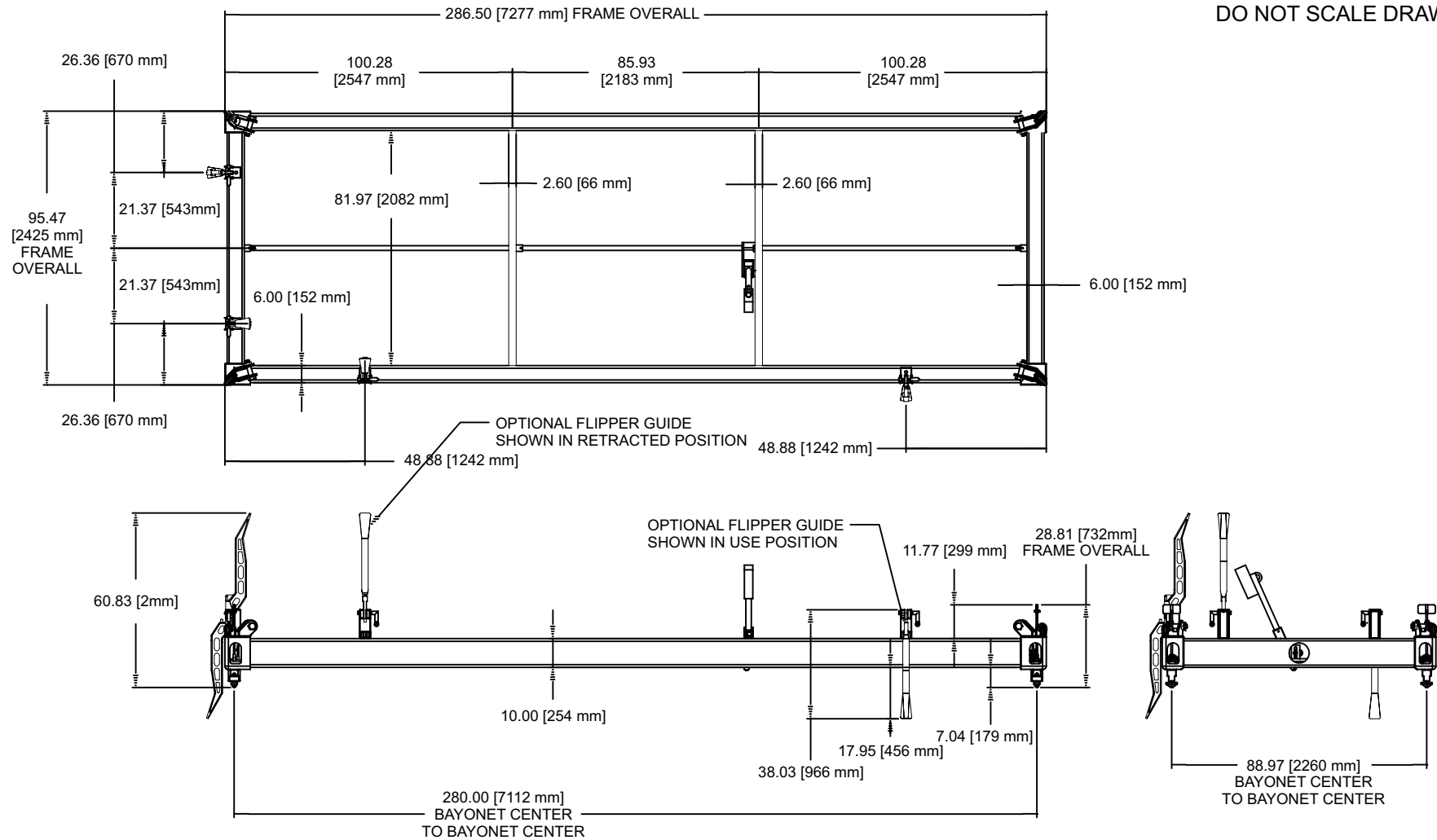
NOTES:

1. OUTSIDE DIMENSIONS OF SPREADER (LENGTH AND WIDTH) ARE LESS THAN OUTSIDE DIMENSIONS OF LIFTED CONTAINER

24' AUTOLOC SPREADER (N3100AC-1PA)

Cage Code: 65059 | Drawing No: SN3100AC-1PA | Revision: B | Sheet: 2 of 2

UNLESS OTHERWISE SPECIFIED, DIMENSIONS ARE IN INCHES
SEE ELECTRONIC PARTS LIST FOR BILL OF MATERIALS
DO NOT SCALE DRAWING



To avoid lifter failure, potential death and property damage, never exceed WLL (Working Load Limit)

This document contains the proprietary information of Tandemloc, Inc. and your access and use shall be, and is at all times, pursuant to and limited by the Tandemloc, Inc. Terms of Use.

You shall not, and shall not encourage, assist, or authorize another party to copy, distribute, publically display, modify, reverse engineer, decompile, or take any other action to reproduce or replicate this document or the information contained herein. © Copyright 2012 by Tandemloc, Inc.

Dimensions are subject to manufacturing tolerance and change.



Email: info@tandemloc.com • www.tandemloc.com

824 Highway 101 • Havelock, NC 28532

TEL: 1.800.258.7324 (252.447.7155)

FAX: 1.800.892.3273 (252.447.5502)

Tandemloc designs, manufactures and tests lifting, securing and mobilizing components for all industries. See our website for details and important safety information.

Read all safety labels and instructions prior to use. Product to be used by qualified personnel only.