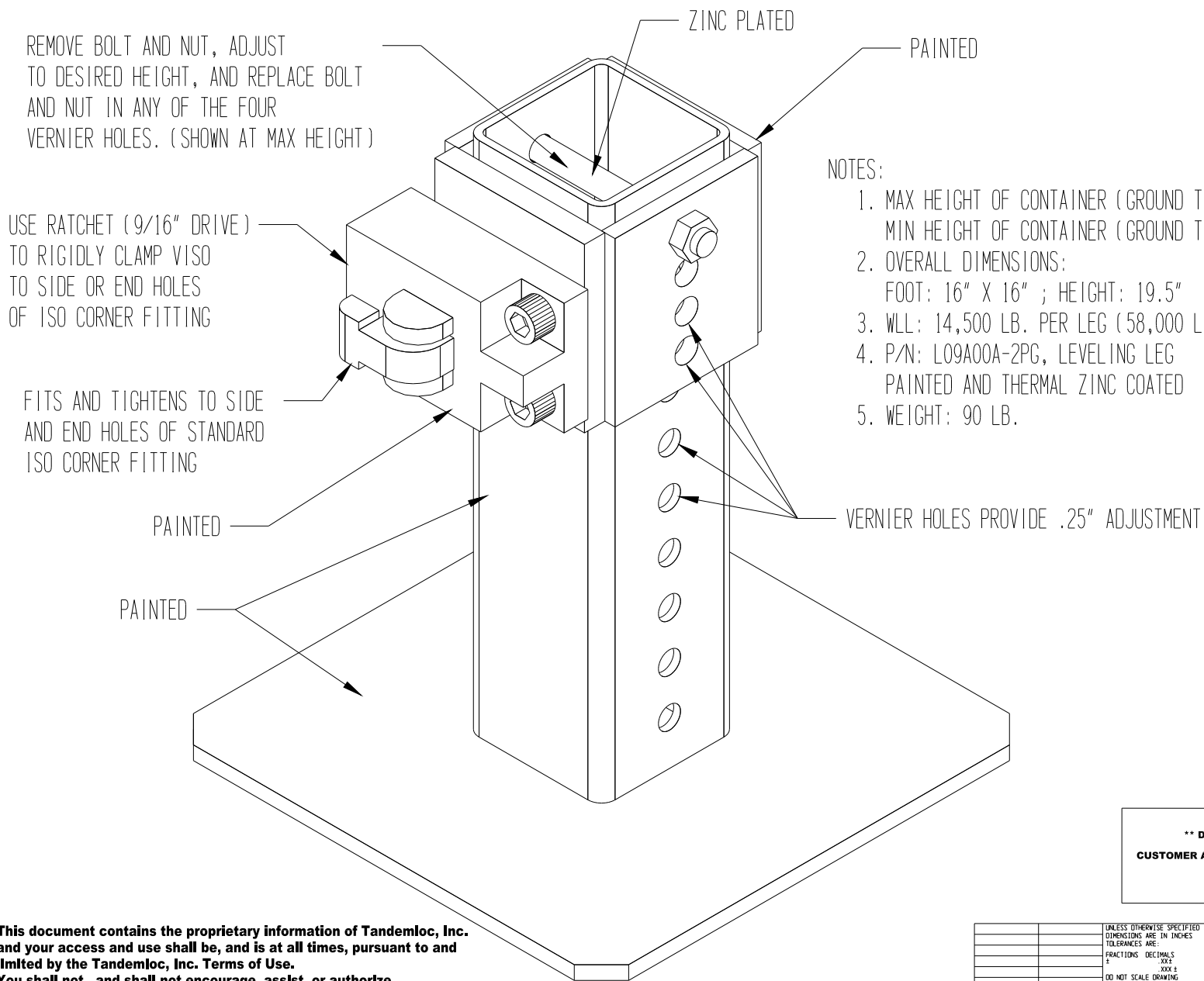


REVISIONS				
ZONE	REV	DESCRIPTION	DATE	APPROVED
-	A	PART NUMBER WAS -1PG	04-20-06	WJD
-	B	ADDED SHEET TWO, P/N -3PG	04-17-08	HL
-	C	THERMAL WAS HOT DIPPED, PAINTED WAS GALVANIZED	12-03-09	DAH
-	D	ADDED SHEET 3, P/N -4PG	03-13-13	DAH
-	E	ADDED P/N -3TZ, LEVELING LEG WITH HOLES, THERMAL ZINC COAT	05-18-18	WJD



- NOTES:
1. MAX HEIGHT OF CONTAINER (GROUND TO BOTTOM OF CORNER FITTING): 12.88 INCHES
MIN HEIGHT OF CONTAINER (GROUND TO BOTTOM OF CORNER FITTING): 0.88 INCHES
 2. OVERALL DIMENSIONS:
FOOT: 16" X 16" ; HEIGHT: 19.5"
 3. WLL: 14,500 LB. PER LEG (58,000 LB. CONTAINER LOAD)
 4. P/N: L09A00A-2PG, LEVELING LEG
PAINTED AND THERMAL ZINC COATED
 5. WEIGHT: 90 LB.

**** DO NOT SIGN IF CHANGES ARE REQUIRED ****

CUSTOMER APPROVAL: _____

DATE: _____

This document contains the proprietary information of Tandemloc, Inc. and your access and use shall be, and is at all times, pursuant to and limited by the Tandemloc, Inc. Terms of Use. You shall not, and shall not encourage, assist, or authorize another party to copy, distribute, publicly display, modify, reverse engineer, decompile, or take any other action to reproduce this document or the information contained herein.

©2019 by Tandemloc, Inc.
Dimensions are subject to manufacturing tolerance and change.

UNLESS OTHERWISE SPECIFIED DIMENSIONS ARE IN INCHES TOLERANCES ARE: FRACTIONS DECIMALS "XXX" .XXX "XXX" .XXX DO NOT SCALE DRAWING		CONTRACT NO.		TITLE	
THIS DOCUMENT CONTAINS INFORMATION WHICH IS THE PROPERTY OF THIS COMPANY. DISCLOSURE IN ANY MANNER, WITHOUT THE WRITTEN AUTHORIZATION OF THIS COMPANY IS EXPRESSLY PROHIBITED.		APPROVALS	DATE	ISO CONTAINER LEVELING LEG	
NEXT ASSY		DRAWN	09-21-93	SIZE	REV. E
APPLICATION		CHECKED	ENGR	DWG NO.	
		DESIGN ACTIVITY		65059	SL09A00A
		SCALE		CALC	REV
				REV	SHEET 1 OF 3

