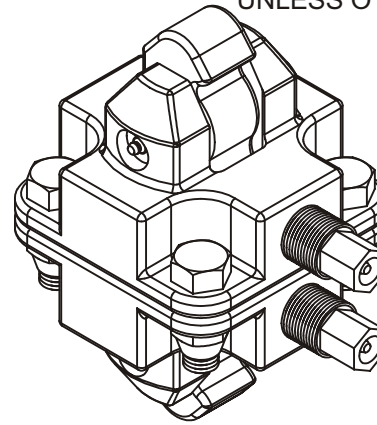
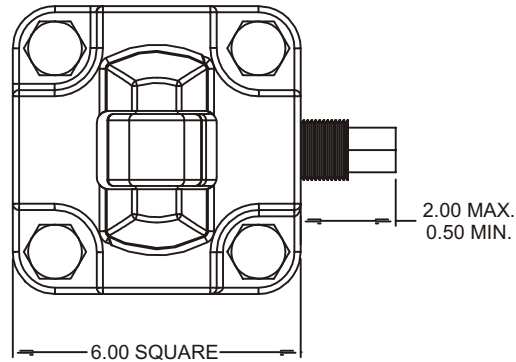


REV	DESCRIPTION	REVISIONS	DATE	APPROVED
A	IN NOTE 3 "ULTIMATE" WAS "MAXIMUM ALLOWABLE" AND ADDED (NO SAFETY FACTOR), ADDED NOTE 4		2/19/14	DAH
B	ADDED MAXIMUM ALLOWABLE TO NOTE 3		2/27/14	DAH

DOUBLE VERTICAL VISO (K08A00B)

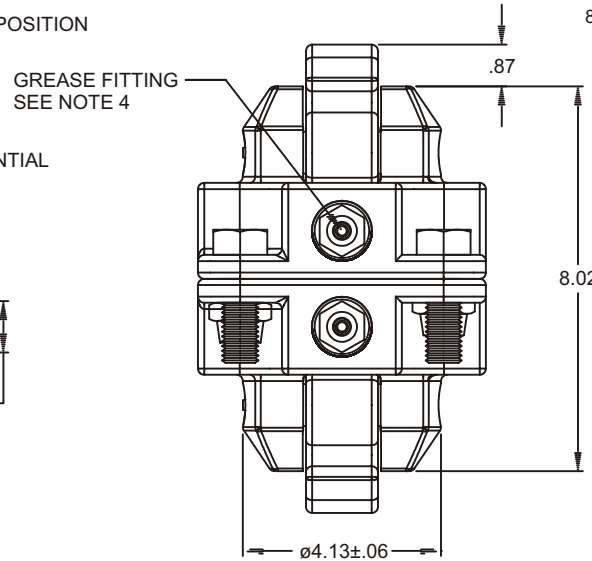
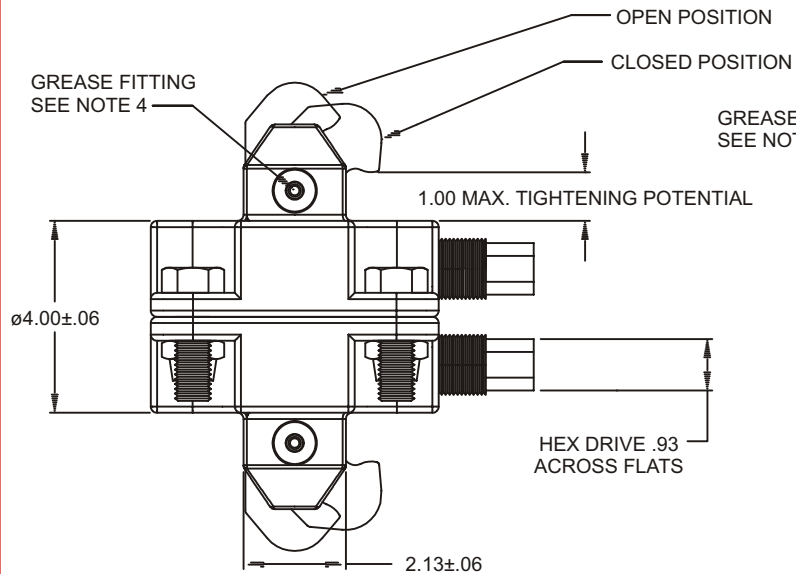
Cage Code: 65059 | Drawing No: SK08A00B | Revision: B | Sheet: 1 of 1

SEE ELECTRONIC PARTS LIST FOR BILL OF MATERIALS
UNLESS OTHERWISE SPECIFIED, DIMENSIONS ARE IN INCHES



NOTES:

- PART NO.: K08A00B-1GA
- THE GRIP AND FORCE EXERTED BY THE CLAMP ARM IS VARIABLE BY ROTATING THE DRIVE STUD. MAX LOAD ON THE HEX DRIVE IS 50 FT/LB.)
- ULTIMATE LOAD FOR ONE VISO (NO SAFETY FACTOR)
 - 44,000 LB. RESTRAINT AGAINST UPWARD FORCE
 - MAXIMUM ALLOWABLE
 - 50,000 LB. TRANSVERSE SHEAR
 - 200,000 LB. COMPRESSION
- IF USING AS A LIFTING PRODUCT, PROOF TESTING IS REQUIRED WLL 15,000 LB. DESIGN CATEGORY A WLL 10,000 LB. DESIGN CATEGORY B
- TWO GREASE FITTINGS PER VISO ALLOW FOR EASY LUBRICATION
RECOMMENDED GREASE: RED LITHIUM HIGH TEMPERATURE.
- DIMENSIONS WITHOUT TOLERANCE ARE SUBJECT TO MANUFACTURING TOLERANCES.
- FOR A SLACK FREE CONNECTION IN THE LARGE APERTURE OF AN ISO 1161 STANDARD CORNER FITTING.
- CALCULATED WEIGHT: 39 LB.



To avoid lifter failure, potential death and property damage, never exceed WLL (Working Load Limit)

This document contains the proprietary information of Tandemloc, Inc. and your access and use shall be, and is at all times, pursuant to and limited by the Tandemloc, Inc. Terms of Use.

You shall not, and shall not encourage, assist, or authorize another party to copy, distribute, publically display, modify, reverse engineer, decompile, or take any other action to reproduce or replicate this document or the information contained herein. © Copyright 2012 by Tandemloc, Inc.

Dimensions are subject to manufacturing tolerance and change.



Email: info@tandemloc.com • www.tandemloc.com
824 Highway 101 • Havelock, NC 28532
TEL: 1.800.258.7324 (252.447.7155)
FAX: 1.800.892.3273 (252.447.5502)

Tandemloc designs, manufactures and tests lifting, securing and mobilizing components for all industries. See our website for details and important safety information.
Read all safety labels and instructions prior to use. Product to be used by qualified personnel only.