



PROOF TESTED SINCE 1984

www.tandemloc.com

Call Toll-Free: 1-800-258-7324

info@tandemloc.com

For extended information, specifications and drawings, visit www.tandemloc.com/0_lifting/L_AN30-Coil-Hook.asp

**AN30A SERIES of COIL HOOKS
BUY FACTORY-DIRECT**

COIL HOOK LIFTERS

This Below the Hook Lifter is used to lift coils, typically steel, aluminum and other materials.



1/2 Ton to 5 Ton Capacities in Stock

Tandemloc C-Hooks are designed for moving and positioning heavy coils with an overhead lifting device.

Narrow, space-saving profile.

Lead-in taper for easy insertion into coils.

Large, super-duty guide handles ease coil positioning and are designed for a lifetime of rugged service.

Please scroll down for detailed information on each style.

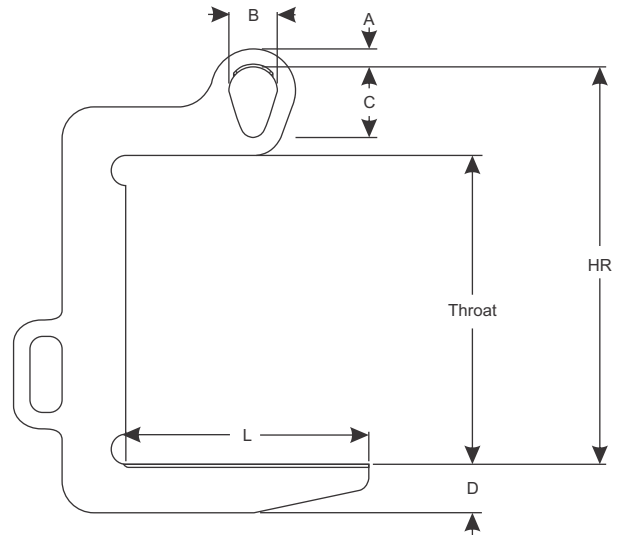
We can build custom coil hooks too. For pricing on a stock or custom coil hook, please contact the Tandemloc Sales Department.



* Maximum Radial Dimension is equal to the Throat minus a clearance value.

MODEL	Working Load Limit (lbs.)	COIL DIMENSIONS			Weight (lbs.)	COIL HOOK DIMENSIONS (in.)						
		Max. Radial Dimension* (in.)	Max. Width (in.)	Min. Eye Diameter (in.)		A	B	C	D	L	Throat	HR
AN30A01-08A-PA	1,000	14.25	8	2.50	15	13/16	2	3.25	2.25	8	14.5	18 3/4
AN30A01-12A-PA	1,000	14.25	12	2.50	17	13/16	2	3.25	2.25	12	14.5	18 3/4
AN30A02-08A-PA	2,000	17.25	8	2.50	16	13/16	2	3.25	2.25	8	17.5	21 3/4
AN30A02-16A-PA	2,000	17.25	16	2.75	23	13/16	2	3.25	2.50	16	17.5	21 3/4
AN30A04-08A-PA	4,000	19.25	8	2.50	28	1	2.5	4	2.25	8	19.5	24 5/8
AN30A04-16A-PA	4,000	19.25	16	3.25	54	1	2.5	4	3	16	19.5	25 3/8
AN30A07-12A-PA	7,000	21.25	12	3.25	54	1	2.5	4	3	12	21.5	27 3/8
AN30A07-16A-PA	7,000	21.25	16	3.25	59	1	2.5	4	3	16	21.5	27 3/8
AN30A07-20A-PA	7,000	21.25	20	3.75	73	1	2.5	4	3.5	20	21.5	27 7/8
AN30A10-16A-PA	10,000	25.25	16	3.75	95	1.5	4	5.75	3.5	16	25.5	32 7/8
AN30A10-20A-PA	10,000	25.25	20	4.00	114	1.5	4	5.75	4	20	25.5	32 7/8

- Does not require maintenance
- Simple, high strength design, low weight, high capability lifter
- **Proof Tested to 125% of WLL, Certification Provided**
- Load should be centered below hook lift location
- Integrated maneuvering handle for unloaded positioning of lifter
- Will hang level when loaded
- Features edge protecting chamfers on lift arm
- **Fully ASME B30.20 compliant**
- Stock item, usually ships within 1 business day



Coil dimensions approximate and are maximum limits. Lifter capacity is limited to capacity rating

