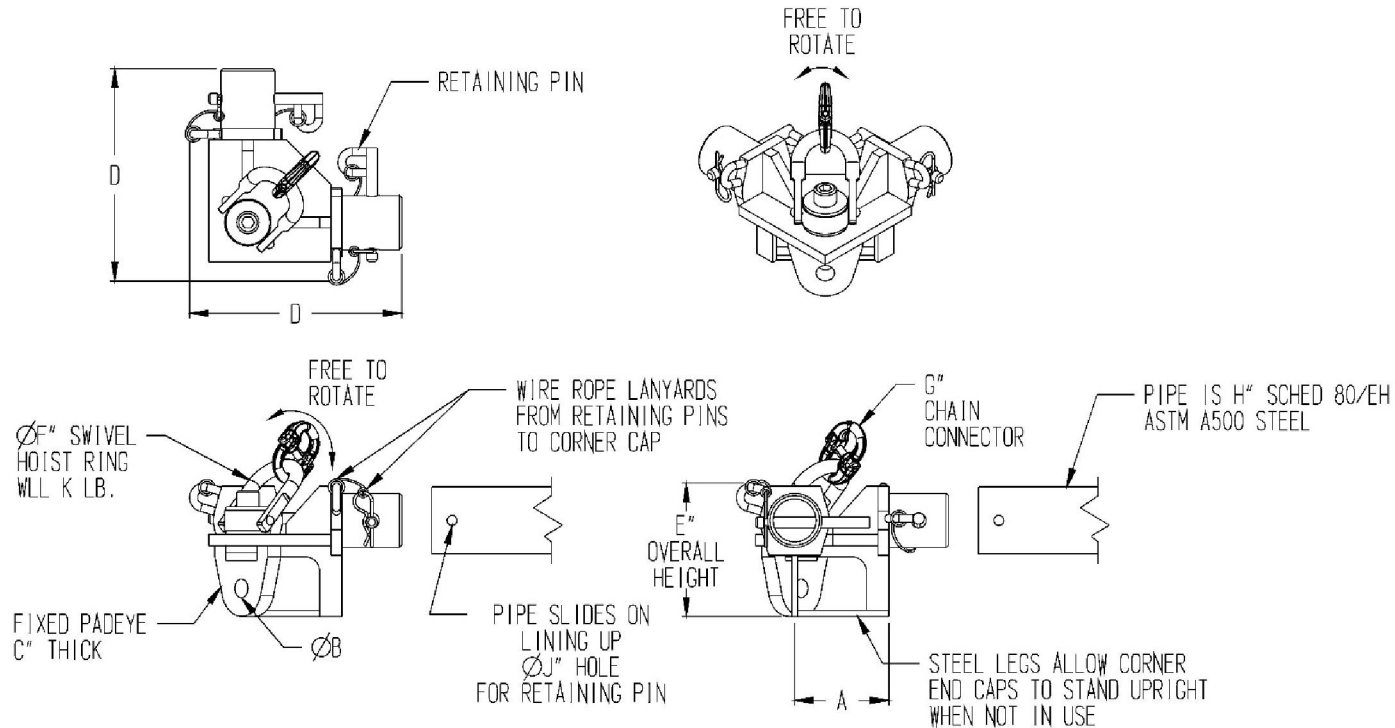


## CORNER CAP FRAME SPREADER (AL03)

**Cage Code: 65059 | Drawing No: SAL03 | Revision: - | Sheet: 1 of 2**

UNLESS OTHERWISE SPECIFIED, DIMENSIONS ARE IN INCHES



PART NUMBER	WLL STRAIGHT TENSION	WLL @45° SLING ANGLE	FRAME WLL @45°	PROOF TEST 45° (125% OF SWL) AND CERTIFY	1/2 CUT LENGTH A	PADEYE HOLE Ø B	PADEYE THICKNESS C	OVERALL SIZE D	OVERALL HEIGHT E	SWIVEL RING SIZE F	CONNECTOR SIZE G	NOMINAL PIPE SIZE H	PIN HOLE DIAMETER J	SWIVEL RING WLL K	WEIGHT PER CORNER
AL03A00-04A	10,000 LB.	7,072 LB.	28,288 LB.	35,360 LB.	6.31	1.25	1.25	14.23	8.93	1.00	.50	4	1.00	10,000 LB.	62 LB.
AL03A00-06A	24,000 LB.	16,970 LB.	67,880 LB.	84,850 LB.	7.16	1.75	1.75	18.01	14.00	1.75	1.00	6	1.00	24,000 LB.	180 LB.
AL03A00-00A	50,000 LB.	35,355 LB.	141,420 LB.	176,775 LB.	13.16	2.25	2.25	25.54	17.13	2.25	1.25	8	1.00	50,000 LB.	365 LB.

To avoid lifter failure, potential death and property damage, never exceed WLL (Working Load Limit).

This document contains the proprietary information of Tandemloc, Inc. and your access and use shall be, and is at all times, pursuant to and limited by the Tandemloc, Inc. Terms of Use.

You shall not, and shall not encourage, assist, or authorize another party to copy, distribute, publicly display, modify, reverse engineer, decompile, or take any other action to reproduce this document or the information contained herein. © Copyright 2014 by Tandemloc, Inc.

Dimensions are subject to manufacturing tolerance and change.



Email: [info@tandemloc.com](mailto:info@tandemloc.com) • [www.tandemloc.com](http://www.tandemloc.com)

824 Highway 101 • Havelock, NC 28532

Tel: 1.800.258.7324 (252.447.7155)

FAX 1.800.892.3273 (252.447.5502)

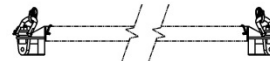
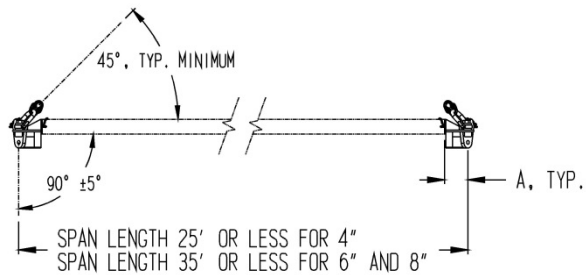
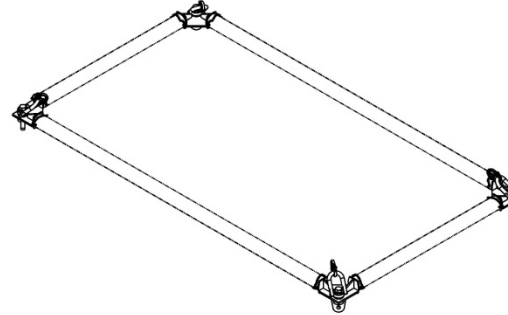
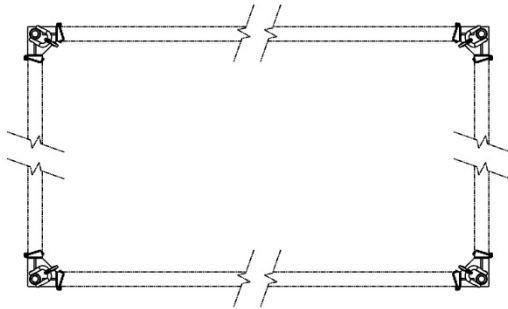
Tandemloc, Inc. designs, manufactures and tests lifting, securing and mobilizing components for all industries. See our website for details and important safety information.

Read all safety labels and instructions prior to use. Product to be used by qualified personnel only.

## CORNER CAP FRAME SPREADER (AL03)

Cage Code: 65059 | Drawing No: SAL03 | Revision: - | Sheet: 2 of 2

UNLESS OTHERWISE SPECIFIED, DIMENSIONS ARE IN INCHES



### USAGE NOTES:

1. FRAMES MAY BE MADE WITH EQUAL LENGTH PARALLEL SIDES IN SQUARE OR RECTANGLE SHAPES.
2. PIPE LENGTH SHOULD NOT BE EXCEEDED WITHOUT CONTACTING TANDEMLOC FOR ADDITIONAL INFORMATION.
3. CUT LENGTH IS DETERMINED BY SUBTRACTING 2 X A" FROM THE DESIRED SPAN LENGTH.
4. ONCE PIPE IS CUT A Ø1.00" HOLE NEEDS TO BE DRILLED THRU THE PIPE 2.00" FROM THE END FOR THE SAFETY PIN.
5. TOP SLINGS ARE TO ONLY BE MADE IN A 4 LEG ASSEMBLY AT 45° TO 80°.
6. BOTTOM SLINGS ARE TO PULL STRAIGHT DOWN AT 90°±5° TO THE FRAME.

To avoid lifter failure, potential death and property damage, never exceed WLL (Working Load Limit).

This document contains the proprietary information of Tandemloc, Inc. and your access and use shall be, and is at all times, pursuant to and limited by the Tandemloc, Inc. Terms of Use.

You shall not, and shall not encourage, assist, or authorize another party to copy, distribute, publicly display, modify, reverse engineer, decompile, or take any other action to reproduce this document or the information contained herein. © Copyright 2014 by Tandemloc, Inc.

Dimensions are subject to manufacturing tolerance and change.



Email: [info@tandemloc.com](mailto:info@tandemloc.com) • [www.tandemloc.com](http://www.tandemloc.com)

824 Highway 101 • Havelock, NC 28532

Tel: 1.800.258.7324 (252.447.7155)

FAX 1.800.892.3273 (252.447.5502)

Tandemloc, Inc. designs, manufactures and tests lifting, securing and mobilizing components for all industries. See our website for details and important safety information.

Read all safety labels and instructions prior to use. Product to be used by qualified personnel only.