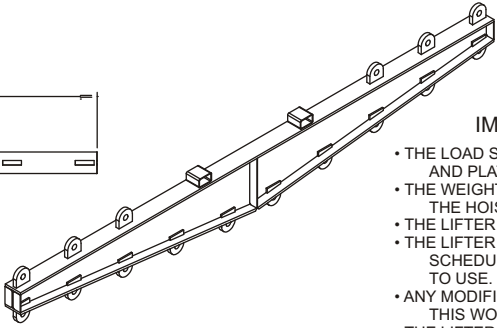
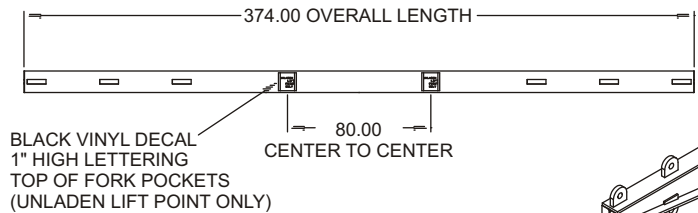


REV DESCRIPTION	REVISIONS	DATE	APP.
A	ADDED FORK POCKETS TO TOP OF BEAM	10-16-07	DAH

LIFTBEAM (AH38A00-00A-PA)

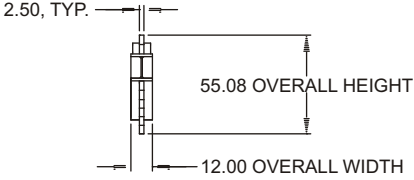
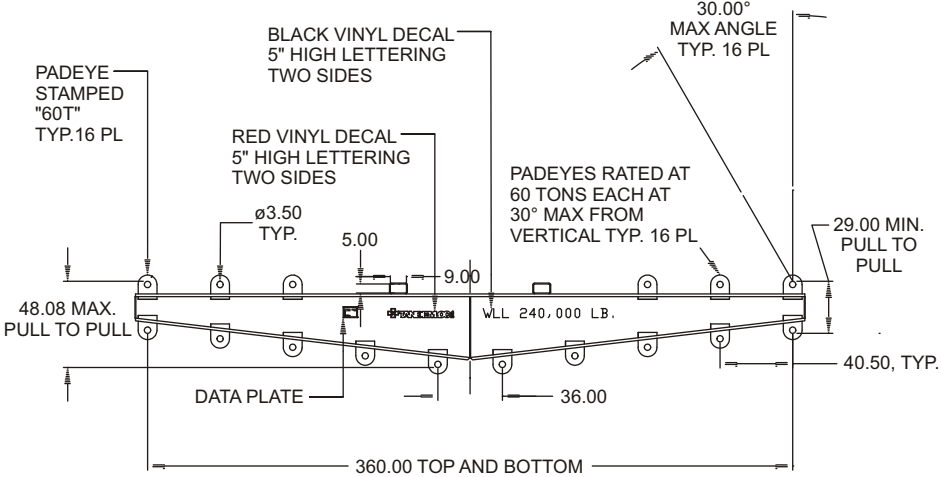
Cage Code: 65059 | Drawing No: SAH38A00 | Revision: A | Sheet: 1 of 3

UNLESS OTHERWISE SPECIFIED, DIMENSIONS ARE IN INCHES
SEE ELECTRONIC PARTS LIST FOR BILL OF MATERIALS



DATA PLATE INFORMATION IMPORTANT SAFETY INFORMATION FOR LIFTING EQUIPMENT

- THE LOAD SHOULD NEVER EXCEED THE WORKING LOAD LIMIT (WLL) SPECIFIED ON THE LIFTER AND PLATE.
- THE WEIGHT (WT) OF THE LIFTER AND LOAD SHOULD NEVER EXCEED THE RATED CAPACITY OF THE HOIST OR CRANE.
- THE LIFTER SHOULD BE OPERATED BY QUALIFIED PERSONNEL.
- THE LIFTER INCLUDING ALL RIGGING SHOULD BE VISUALLY AND MECHANICALLY INSPECTED ON A SCHEDULED BASIS BY QUALIFIED PERSONNEL. DEFECTS SHOULD BE CORRECTED PRIOR TO USE.
- ANY MODIFICATIONS OR REPAIRS TO THE LIFTER SHOULD BE MADE BY QUALIFIED PERSONNEL. IF THIS WORK IS STRUCTURAL, THE LIFTER SHOULD BE PROOF OR LOAD TESTED AGAIN.
- THE LIFTER SHOULD ONLY BE USED FOR ITS DESIGNED OR DESIGNATED PURPOSE, AND IN ACCORDANCE WITH MANUFACTURE'S INSTRUCTIONS.
- PERSONNEL SHOULD NOT RIDE ON THE LIFTER, NOR PLACE THEMSELVES IN, UNDER, OR DIRECTLY ADJACENT TO THE LIFTING AREA.
- A LOW HEIGHT TEST LIFT SHOULD BE CONDUCTED TO CONFIRM LIFTER FUNCTION AND LOAD STABILITY.
- THE LIFTER LOAD SHOULD BE BALANCED SUCH THAT EXCESSIVE POINT LOADING DOES NOT OCCUR.
- ALL LIFTING SHOULD BE DONE IN A SMOOTH, EVEN MANNER TO MINIMIZE SHOCK TO THE LIFTER AND LOAD.



- NOTES:
1. PART NO.: AH38A00-00A-PA
 2. WLL: 240,000 LB.
 3. PROOF TESTED TO 125% (300,000 LB.) AND CERTIFIED, ALL PADEYES TESTED (IN PAIRS)
 4. STANDARD SPECIFICATION #EAD21000A APPLIES
 5. FINISH: SANDBLAST, PRIME AND PAINT SAFETY YELLOW
 6. CALCULATED WEIGHT: 7,000 LB
 7. DESIGNED AND MANUFACTURED TO MEET OR EXCEED ASME B30.20 & BTH-1, DESIGN CAT. B, SERVICE CLASS 0.

To avoid lifter failure, potential death and property damage, never exceed WLL (Working Load Limit)
This document contains the proprietary information of Tandemloc, Inc. and your access and use shall be, and is at all times, pursuant to and limited by the Tandemloc, Inc. Terms of Use.
You shall not, and shall not encourage, assist, or authorize another party to copy, distribute, publically display, modify, reverse engineer, decompile, or take any other action to reproduce or replicate this document or the information contained herein. © Copyright 2012 by Tandemloc, Inc.
Dimensions are subject to manufacturing tolerance and change.



Email: info@tandemloc.com • www.tandemloc.com
824 Highway 101 • Havelock, NC 28532
TEL: 1.800.258.7324 (252.447.7155)
FAX: 1.800.892.3273 (252.447.5502)

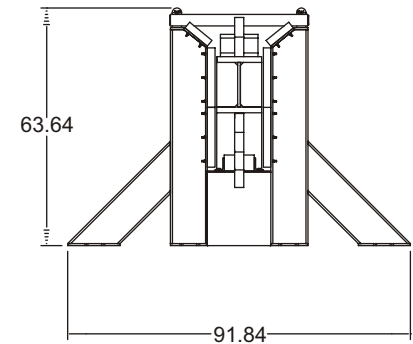
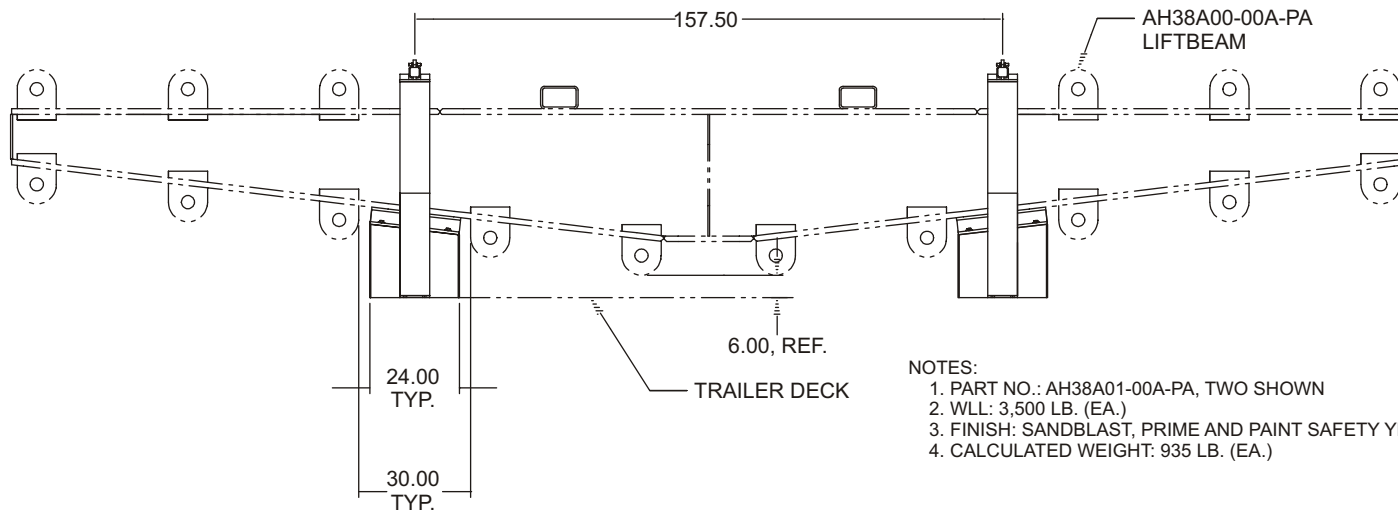
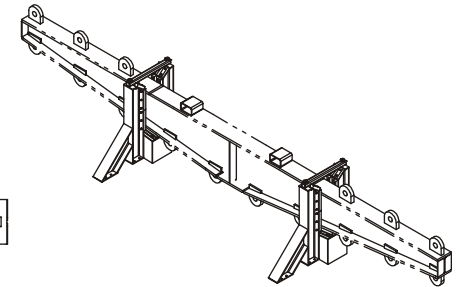
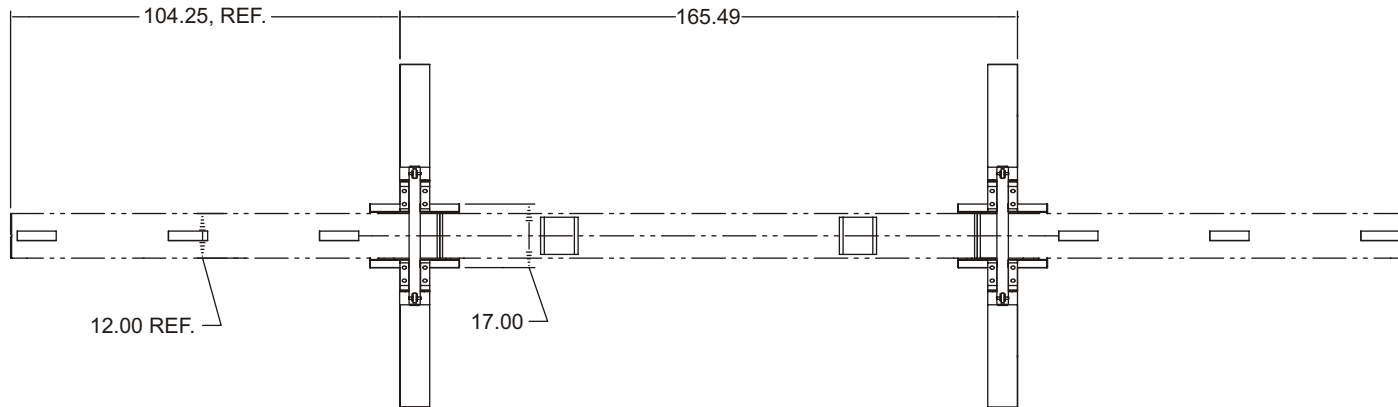
Tandemloc designs, manufactures and tests lifting, securing and mobilizing components for all industries. See our website for details and important safety information.
Read all safety labels and instructions prior to use. Product to be used by qualified personnel only.

REV DESCRIPTION	REVISIONS	DATE	APP.
A 164.49, WAS 165.00; 157.50, WAS 158.00; 63.64, WAS 60.89		11-19-07	ML

STAND, LIFTBEAM (AH38A01-00A-PA)

Cage Code: 65059 | Drawing No: SAH38A01 | Revision: A | Sheet: 2 of 3

UNLESS OTHERWISE SPECIFIED, DIMENSIONS ARE IN INCHES
SEE ELECTRONIC PARTS LIST FOR BILL OF MATERIALS



- NOTES:
1. PART NO.: AH38A01-00A-PA, TWO SHOWN
 2. WLL: 3,500 LB. (EA.)
 3. FINISH: SANDBLAST, PRIME AND PAINT SAFETY YELLOW
 4. CALCULATED WEIGHT: 935 LB. (EA.)

To avoid lifter failure, potential death and property damage, never exceed WLL (Working Load Limit)

This document contains the proprietary information of Tandemloc, Inc. and your access and use shall be, and is at all times, pursuant to and limited by the Tandemloc, Inc. Terms of Use.

You shall not, and shall not encourage, assist, or authorize another party to copy, distribute, publically display, modify, reverse engineer, decompile, or take any other action to reproduce or replicate this document or the information contained herein. © Copyright 2012 by Tandemloc, Inc.

Dimensions are subject to manufacturing tolerance and change.



Email: info@tandemloc.com • www.tandemloc.com
824 Highway 101 • Havelock, NC 28532
TEL: 1.800.258.7324 (252.447.7155)
FAX: 1.800.892.3273 (252.447.5502)

Tandemloc designs, manufactures and tests lifting, securing and mobilizing components for all industries. See our website for details and important safety information.

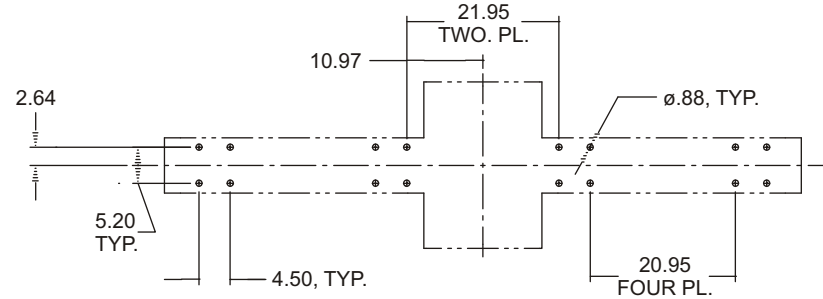
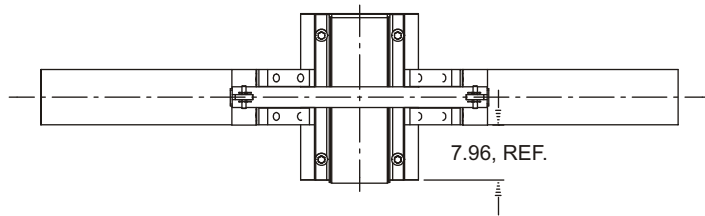
Read all safety labels and instructions prior to use. Product to be used by qualified personnel only.

REV DESCRIPTION	REVISIONS	DATE	APP.
A ADDED BAR, SEE SHEET ONE		11-19-07	ML

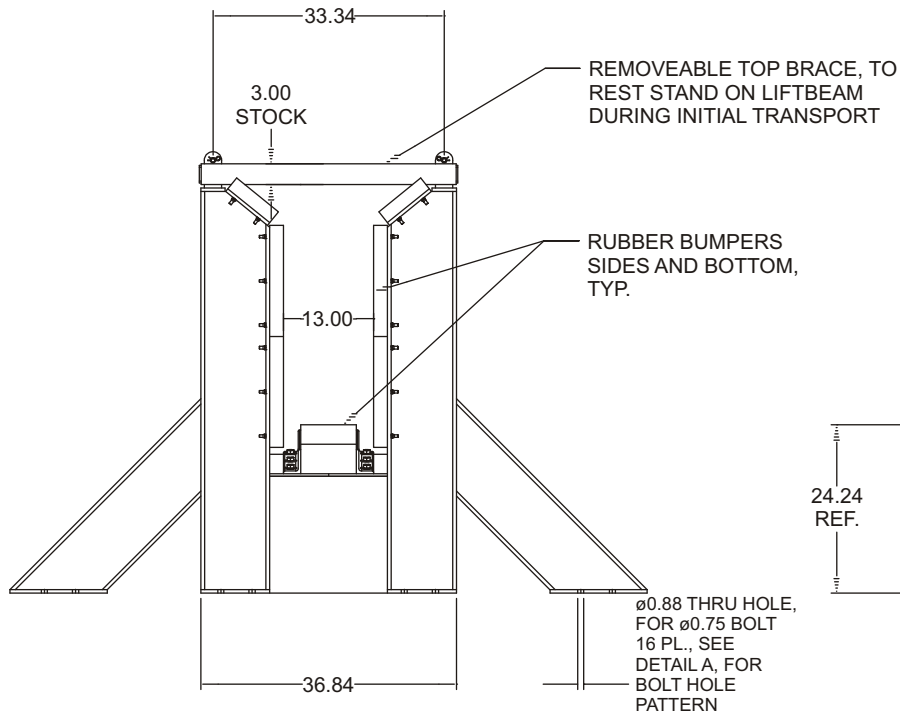
STAND, LIFTBEAM (AH38A01-00A-PA)

Cage Code: 65059 | Drawing No: SAH38A01 | Revision: A | Sheet: 3 of 3

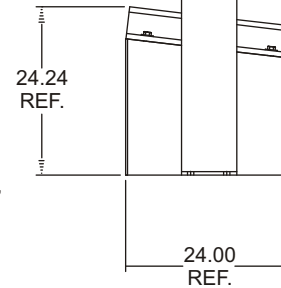
UNLESS OTHERWISE SPECIFIED, DIMENSIONS ARE IN INCHES
SEE ELECTRONIC PARTS LIST FOR BILL OF MATERIALS



DETAIL A -
BOTTOM BOLT HOLE PATTERN



.75, TWO PL.



NOTES:

1. PART NO.: AH38A01-00A-PA
2. WLL: 3,500 LB.
3. FINISH: SANDBLAST, PRIME AND PAINT SAFETY YELLOW
4. CALCULATED WEIGHT: 935 LB.

To avoid lifter failure, potential death and property damage, never exceed WLL (Working Load Limit)

This document contains the proprietary information of Tandemloc, Inc. and your access and use shall be, and is at all times, pursuant to and limited by the Tandemloc, Inc. Terms of Use.

You shall not, and shall not encourage, assist, or authorize another party to copy, distribute, publically display, modify, reverse engineer, decompile, or take any other action to reproduce or replicate this document or the information contained herein. © Copyright 2012 by Tandemloc, Inc.

Dimensions are subject to manufacturing tolerance and change.



Email: info@tandemloc.com • www.tandemloc.com
824 Highway 101 • Havelock, NC 28532
TEL: 1.800.258.7324 (252.447.7155)
FAX: 1.800.892.3273 (252.447.5502)

Tandemloc designs, manufactures and tests lifting, securing and mobilizing components for all industries. See our website for details and important safety information.

Read all safety labels and instructions prior to use. Product to be used by qualified personnel only.