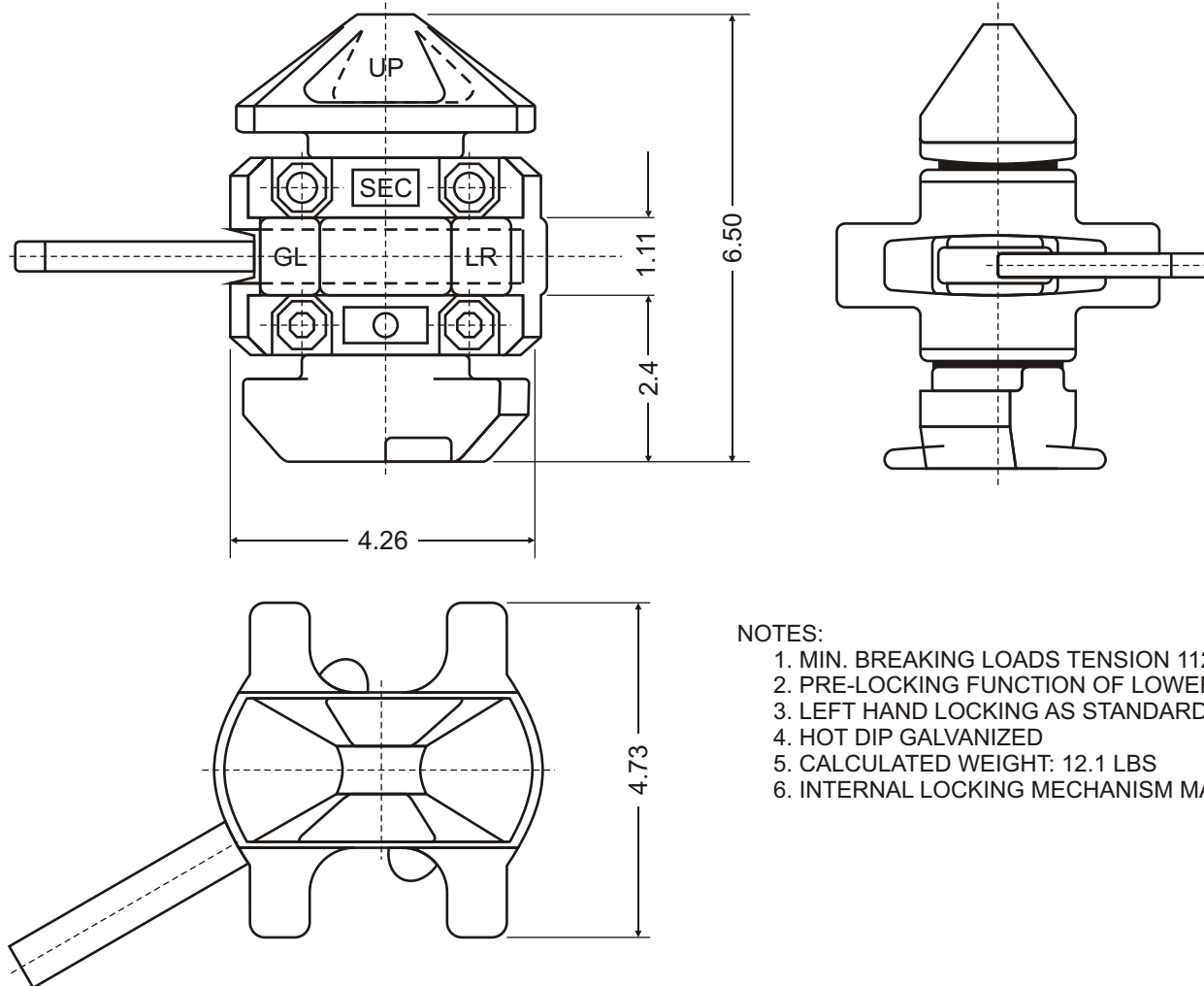


# DOUBLE CONE TWO POSITION TWISTLOC WITH "PRELOC" FEATURE (AE10000A-1GA)

Cage Code: 65059 | Drawing No: SAE10000A-1GA | Revision: - | Sheet: 1 of 1

UNLESS OTHERWISE SPECIFIED, DIMENSIONS ARE IN INCHES  
SEE ELECTRONIC PARTS LIST FOR BILL OF MATERIALS



## NOTES:

1. MIN. BREAKING LOADS TENSION 112,000 LBS / 94,000 LBS
2. PRE-LOCKING FUNCTION OF LOWER CONE
3. LEFT HAND LOCKING AS STANDARD, RIGHT HAND LOCKING ON REQUEST
4. HOT DIP GALVANIZED
5. CALCULATED WEIGHT: 12.1 LBS
6. INTERNAL LOCKING MECHANISM MADE OF STAINLESS STEEL COMPONENTS

To avoid lifter failure, potential death and property damage, never exceed WLL (Working Load Limit)

This document contains the proprietary information of Tandemloc, Inc. and your access and use shall be, and is at all times, pursuant to and limited by the Tandemloc, Inc. Terms of Use.

You shall not, and shall not encourage, assist, or authorize another party to copy, distribute, publically display, modify, reverse engineer, decompile, or take any other action to reproduce or replicate this document or the information contained herein. © Copyright 2012 by Tandemloc, Inc.

Dimensions are subject to manufacturing tolerance and change.



Email: [info@tandemloc.com](mailto:info@tandemloc.com) • [www.tandemloc.com](http://www.tandemloc.com)

824 Highway 101 • Havelock, NC 28532

TEL: 1.800.258.7324 (252.447.7155)

FAX: 1.800.892.3273 (252.447.5502)

Tandemloc designs, manufactures and tests lifting, securing and mobilizing components for all industries. See our website for details and important safety information.

Read all safety labels and instructions prior to use. Product to be used by qualified personnel only.