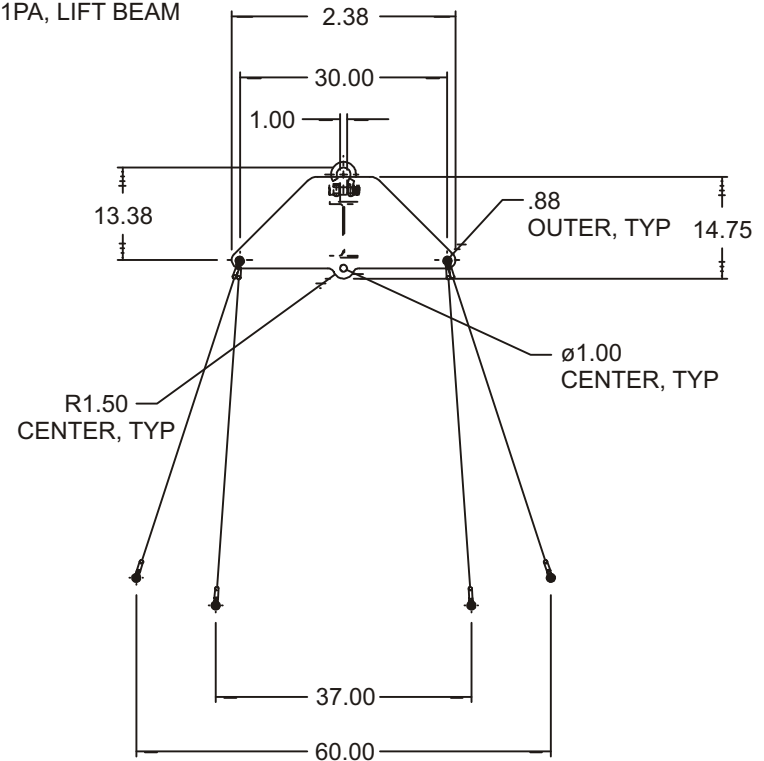
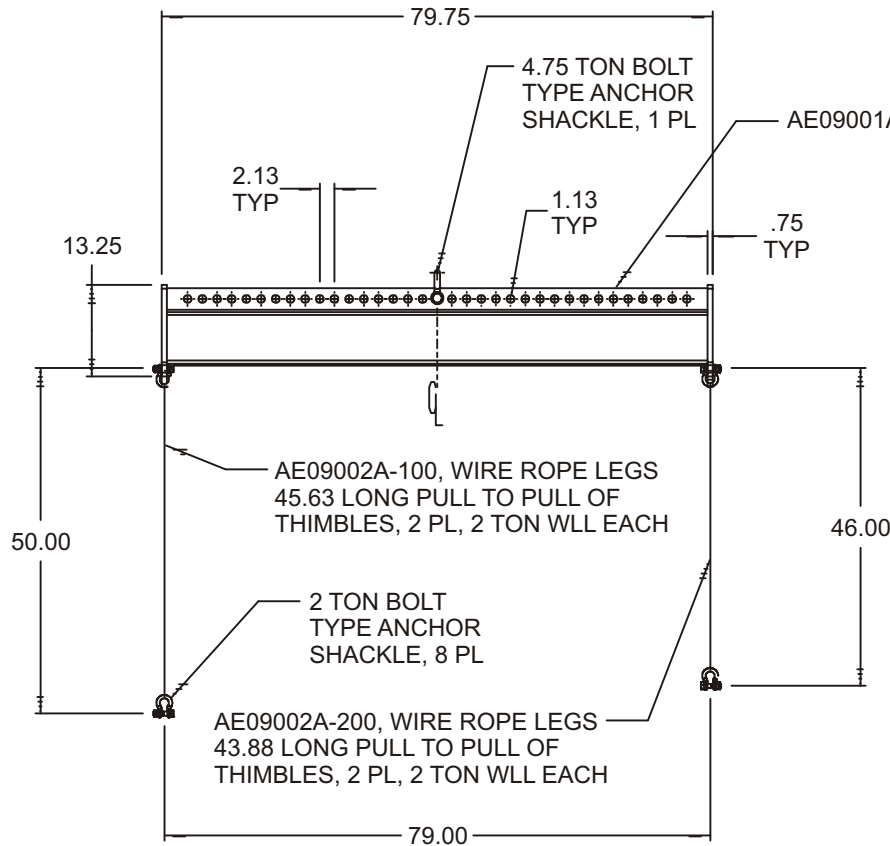


FOUR POINT ADJ. LIFT BEAM - CONFIGURATION 1 (AE09000A-1PA)

Cage Code: 65059 | Drawing No: SAE09000A | Revision: B | Sheet: 1 of 3

UNLESS OTHERWISE SPECIFIED, DIMENSIONS ARE IN INCHES
SEE ELECTRONIC PARTS LIST FOR BILL OF MATERIALS
DO NOT SCALE DRAWING



NOTE:

1. P/N: PER FIELD OF DRAWING
2. WLL: 6,500 LB
3. PROOF TESTED TO 125% (8,125 LB) AND CERTIFIED
4. DESIGNED AND MANUFACTURED TO MEET OR EXCEED ASME B30.20
5. FINISH: SANDBLAST, PRIME AND PAINT SAFETY YELLOW
6. CALCULATED WEIGHT: 310 LB (CONFIGURATION 1)

REVISIONS		
REV	DESCRIPTION	DATE APPROVED
A	ADDED PADEYE CENTER HOLE	04-19-04 W.D.D.
B	ADDED CONFIGURATION 3	05-04-04 W.D.D.

To avoid lifter failure, potential death and property damage, never exceed WLL (Working Load Limit)

This document contains the proprietary information of Tandemloc, Inc. and your access and use shall be, and is at all times, pursuant to and limited by the Tandemloc, Inc. Terms of Use.

You shall not, and shall not encourage, assist, or authorize another party to copy, distribute, publically display, modify, reverse engineer, decompile, or take any other action to reproduce or replicate this document or the information contained herein. © Copyright 2012 by Tandemloc, Inc.

Dimensions are subject to manufacturing tolerance and change.



Email: info@tandemloc.com • www.tandemloc.com
824 Highway 101 • Havelock, NC 28532
TEL: 1.800.258.7324 (252.447.7155)
FAX: 1.800.892.3273 (252.447.5502)

Tandemloc designs, manufactures and tests lifting, securing and mobilizing components for all industries. See our website for details and important safety information.

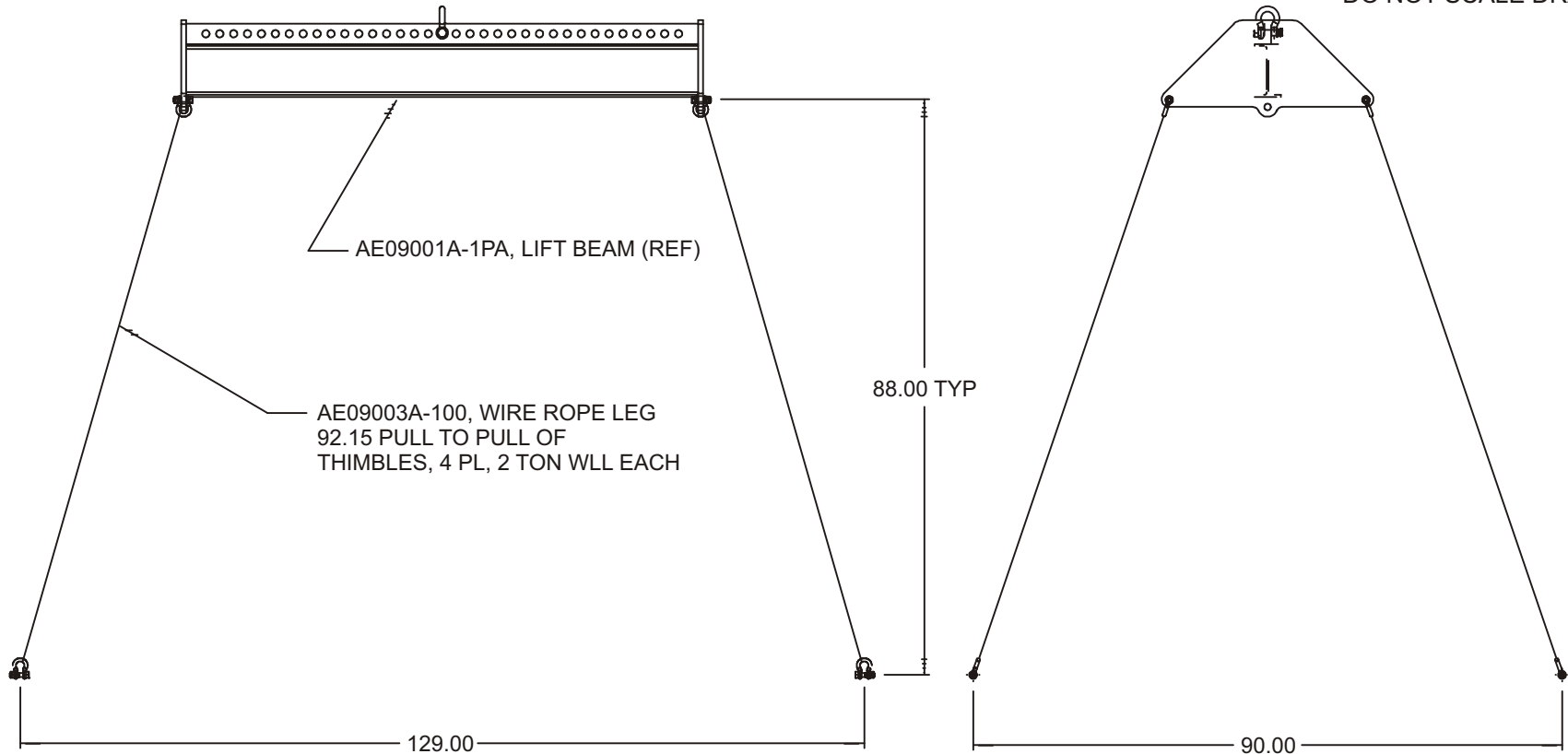
Read all safety labels and instructions prior to use. Product to be used by qualified personnel only.

FOUR POINT ADJ. LIFT BEAM - CONFIGURATION 2 (AE09000A-1PA)

Cage Code: 65059 | Drawing No: SAE09000A | Revision: B | Sheet: 2 of 3

UNLESS OTHERWISE SPECIFIED, DIMENSIONS ARE IN INCHES
SEE ELECTRONIC PARTS LIST FOR BILL OF MATERIALS
DO NOT SCALE DRAWING

SEE SHEET 1 FOR BEAM DETAILS



NOTE:

1. CALCULATED WEIGHT: 317 LB (CONFIGURATION 2)
2. SEE SHEET 1 FOR BEAM DETAILS
3. ONE BEAM PROVIDED, ACCEPTS EITHER WIRE ROPE SETS AS SHOWN TO CHANGE CONFIGURATIONS.

REVISIONS		DATE	APPROVED
REV	DESCRIPTION		
A	ADDED PADEYE CENTER HOLE	04-19-04	W.D.D.
B	ADDED CONFIGURATION 3	05-04-04	W.D.D.

To avoid lifter failure, potential death and property damage, never exceed WLL (Working Load Limit)

This document contains the proprietary information of Tandemloc, Inc. and your access and use shall be, and is at all times, pursuant to and limited by the Tandemloc, Inc. Terms of Use.

You shall not, and shall not encourage, assist, or authorize another party to copy, distribute, publically display, modify, reverse engineer, decompile, or take any other action to reproduce or replicate this document or the information contained herein. © Copyright 2012 by Tandemloc, Inc.

Dimensions are subject to manufacturing tolerance and change.



Email: info@tandemloc.com • www.tandemloc.com
824 Highway 101 • Havelock, NC 28532
TEL: 1.800.258.7324 (252.447.7155)
FAX: 1.800.892.3273 (252.447.5502)

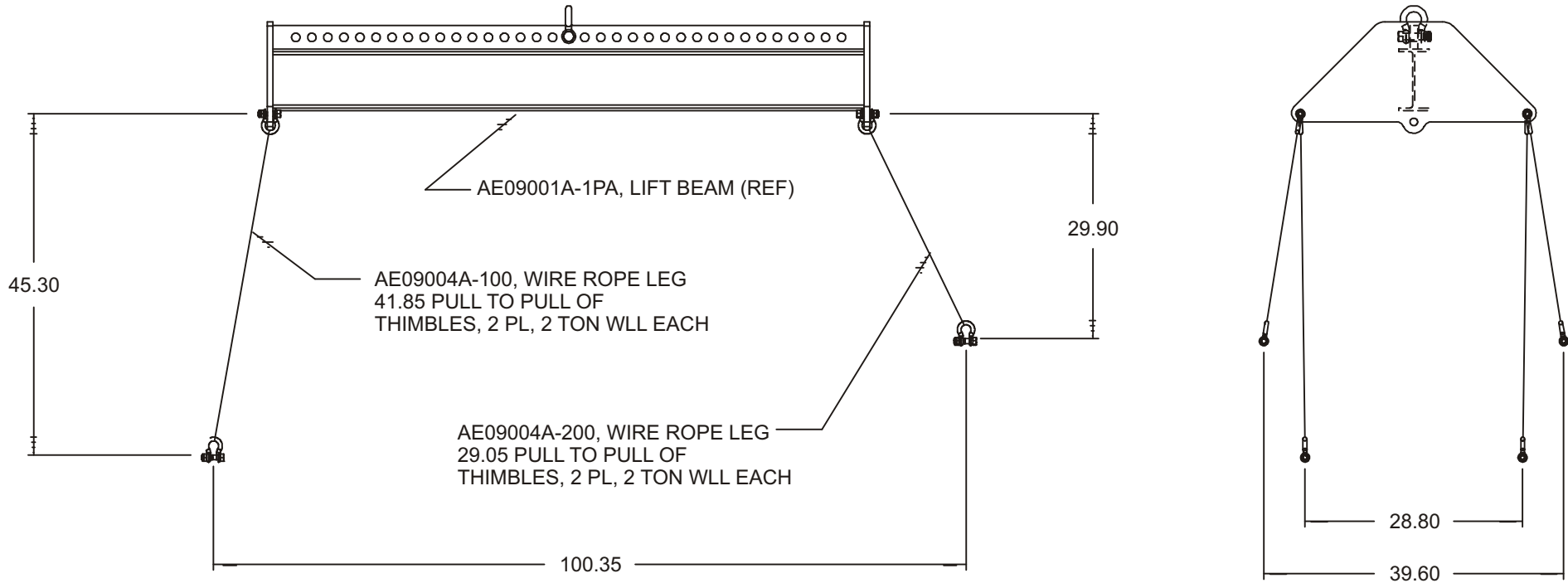
Tandemloc designs, manufactures and tests lifting, securing and mobilizing components for all industries. See our website for details and important safety information.
Read all safety labels and instructions prior to use. Product to be used by qualified personnel only.

FOUR POINT ADJ. LIFT BEAM - CONFIGURATION 3 (AE09000A-1PA)

Cage Code: 65059 | Drawing No: SAE09000A | Revision: B | Sheet: 3 of 3

UNLESS OTHERWISE SPECIFIED, DIMENSIONS ARE IN INCHES
SEE ELECTRONIC PARTS LIST FOR BILL OF MATERIALS
DO NOT SCALE DRAWING

SEE SHEET 1 FOR BEAM DETAILS



NOTE:

1. CALCULATED WEIGHT: 305 LB (CONFIGURATION 3)
2. SEE SHEET 1 FOR BEAM DETAILS
3. ONE BEAM PROVIDED, ACCEPTS EITHER WIRE ROPE SETS AS SHOWN TO CHANGE CONFIGURATIONS.

REVISIONS			
REV	DESCRIPTION	DATE	APPROVED
A	ADDED PADEYE CENTER HOLE	04-19-04	W.D.D.
B	ADDED CONFIGURATION 3	05-04-04	W.D.D.

To avoid lifter failure, potential death and property damage, never exceed WLL (Working Load Limit)

This document contains the proprietary information of Tandemloc, Inc. and your access and use shall be, and is at all times, pursuant to and limited by the Tandemloc, Inc. Terms of Use.

You shall not, and shall not encourage, assist, or authorize another party to copy, distribute, publically display, modify, reverse engineer, decompile, or take any other action to reproduce or replicate this document or the information contained herein. © Copyright 2012 by Tandemloc, Inc.

Dimensions are subject to manufacturing tolerance and change.



Email: info@tandemloc.com • www.tandemloc.com
824 Highway 101 • Havelock, NC 28532
TEL: 1.800.258.7324 (252.447.7155)
FAX: 1.800.892.3273 (252.447.5502)

Tandemloc designs, manufactures and tests lifting, securing and mobilizing components for all industries. See our website for details and important safety information.

Read all safety labels and instructions prior to use. Product to be used by qualified personnel only.