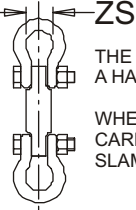


UNIVERSAL LOAD LEVELING LIFT BEAM (AA00000A TYPE)

Cage Code: 65059 | Drawing No: SAA00000A | Revision: H | Sheet: 1 of 1

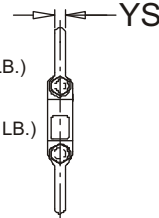
SHOWN HERE IS THE OPTIONAL SENSOR WHICH SIMPLY ATTACHES TO THE TOP SHACKLE OF THE LIFT BEAM WITH THE BOTTOM SENSOR SHACKLE. THEN THE TOP SENSOR SHACKLE CAN BE ATTACHED TO THE CRANE HOOK.



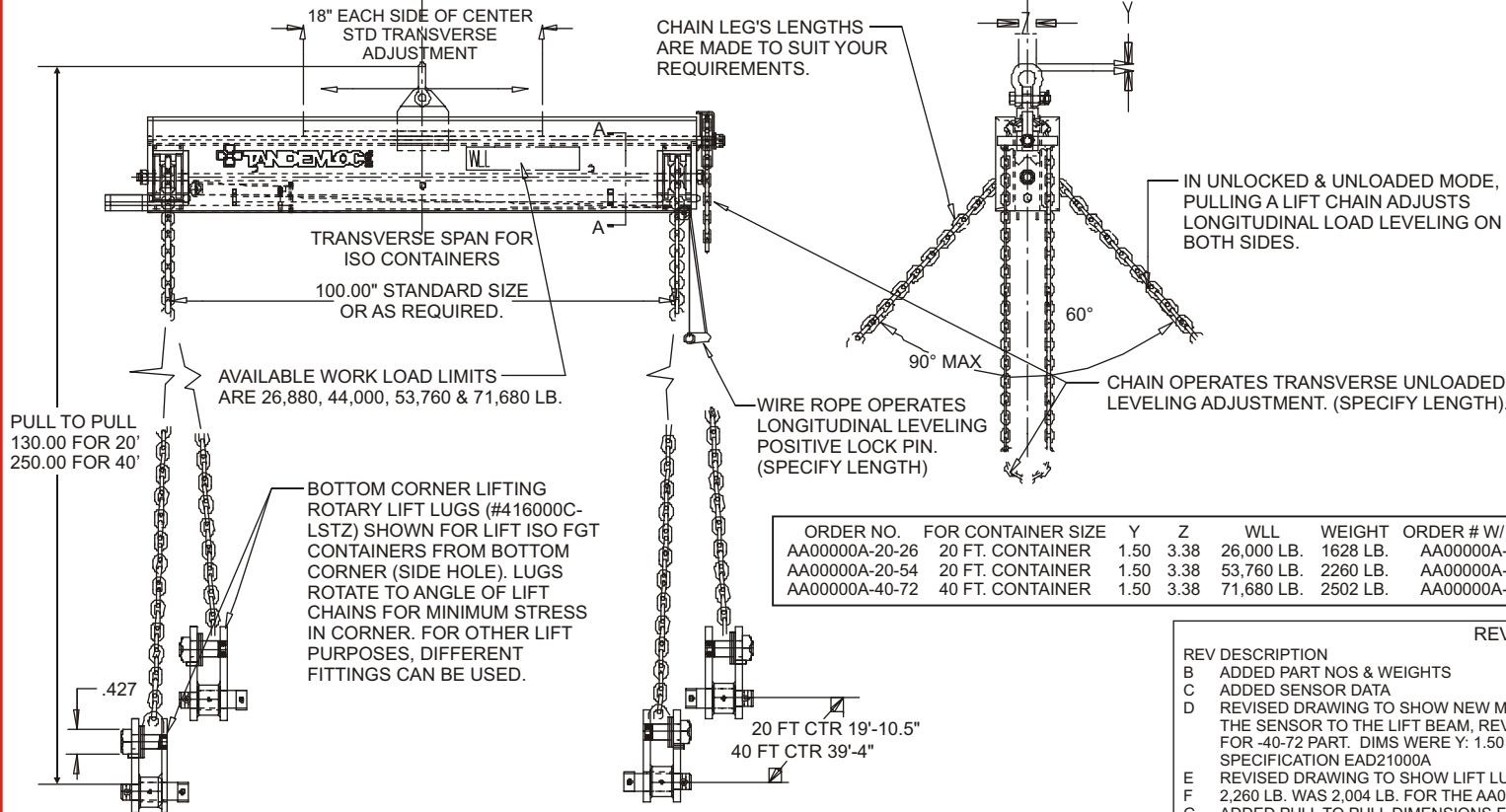
THE LOAD BEING LIFTED IS SENT TO A HAND HELD READ OUT DEVICE. WHEN USING THE SENSOR, EXTRA CARE SHOULD BE TAKEN TO NOT SLAM THE SENSOR DOWN.

SENSOR "C"
(UP TO 50,000 LB.)

SENSOR "D"
(UP TO 100,000 LB.)



STANDARD SPECIFICATION #EAD21000A APPLIES



ORDER NO.	FOR CONTAINER SIZE	Y	Z	WLL	WEIGHT	ORDER # W/ SENSOR	YS	ZS	SENSOR SIZE & WT.
AA00000A-20-26	20 FT. CONTAINER	1.50	3.38	26,000 LB.	1628 LB.	AA00000A-20-26S	2.25	5.00	"C" 98 LB.
AA00000A-20-54	20 FT. CONTAINER	1.50	3.38	53,760 LB.	2260 LB.	AA00000A-20-54S	2.25	5.00	"C" 98 LB.
AA00000A-40-72	40 FT. CONTAINER	1.50	3.38	71,680 LB.	2502 LB.	AA00000A-40-72S	3.13	7.30	"D" 238 LB.

REV	DESCRIPTION	DATE	APPROVED
B	ADDED PART NOS & WEIGHTS	11/04/03	MD
C	ADDED SENSOR DATA	11/06/03	MD
D	REVISED DRAWING TO SHOW NEW METHOD OF ATTACHING THE SENSOR TO THE LIFT BEAM, REVISED SHACKLE DIMS FOR -40-72 PART. DIMS WERE Y: 1.50 & Z: 3.38. ADDED SPECIFICATION EAD21000A	10/11/07	WT
E	REVISED DRAWING TO SHOW LIFT LUGS WITH SAFETY LOCKS	11/06/03	MD
F	2,260 LB. WAS 2,004 LB. FOR THE AA00000A-20-54	4/15/09	DAH
G	ADDED PULL TO PULL DIMENSIONS FOR 20' AND 40'	10/23/13	DAH
H	REMOVED AA0000A-20-44	8/05/14	DAH

To avoid lifter failure, potential death and property damage, Never Exceed WLL (Working Load Limit)

This document contains the proprietary information of Tandemloc, Inc. and your access and use shall be, and is at all times, pursuant to and limited by the Tandemloc, Inc. Terms of Use.

You shall not, and shall not encourage, assist, or authorize another party to copy, distribute, publically display, modify, reverse engineer, decompile, or take any other action to reproduce or replicate this document or the information contained herein. © Copyright 2011 by Tandemloc, Inc.

Dimensions are subject to manufacturing tolerance and change.



Email: info@tandemloc.com • www.tandemloc.com
824 Highway 101 • Havelock, NC 28532
TEL: 1.800.258.7324 (252.447.7155)
FAX: 1.800.892.3273 (252.447.5502)

Tandemloc designs, manufactures and tests lifting, securing and mobilizing components for all industries. See our website for details and important safety information.

Read all safety labels and instructions prior to use. Product to be used by qualified personnel only.