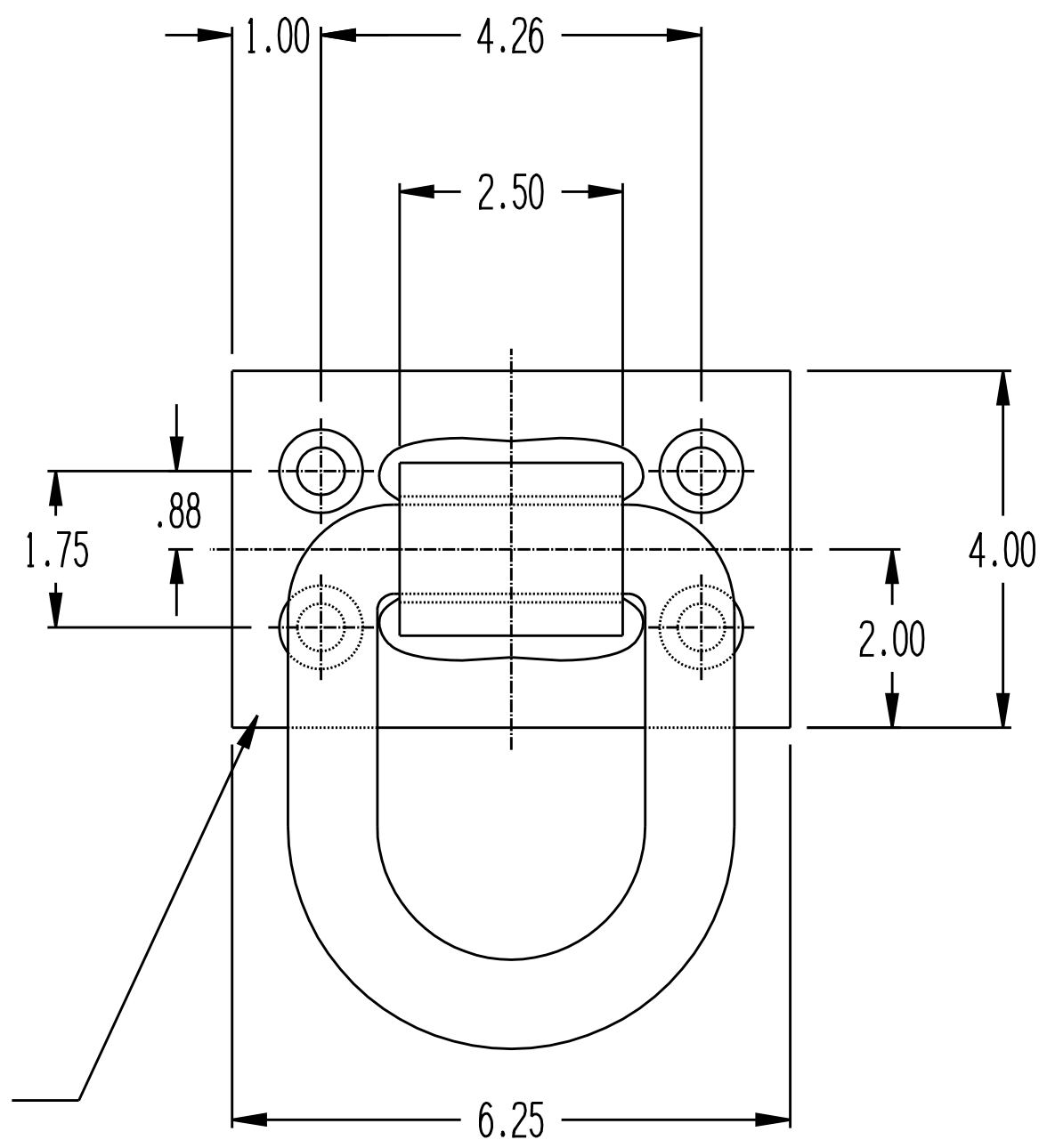
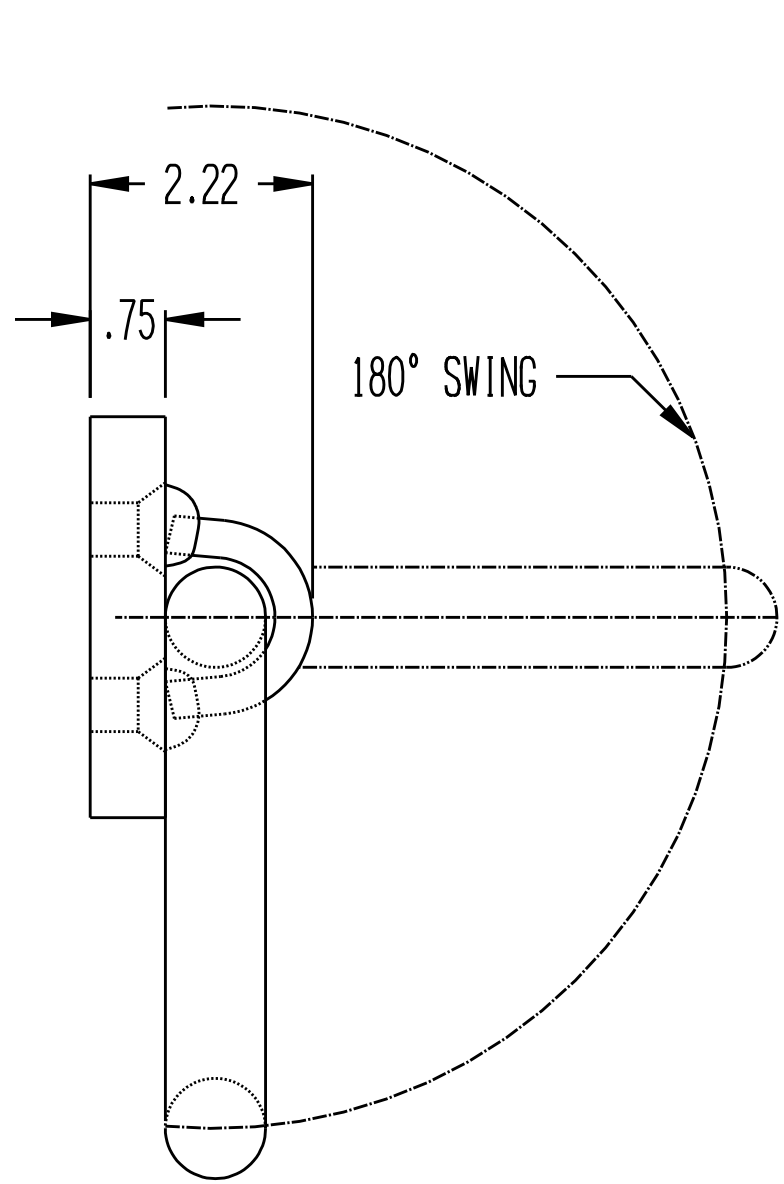


REVISIONS				
ZONE	REV	DESCRIPTION	DATE	APPROVED
	-	THIS WAS SHEET 3 OF 3 DWG S9202	02-15-05	MD



HOLES ARE .531 DIA. THRU AND COUNTERSUNK FOR 1/2 FLAT HEAD ALLOY CAP SCREW. 82°±1° X .269 ±.015 DEEP. (FOUR PLACES)

NOTE:

1. PLATE MATERIAL: ASTM A36 STEEL .75" THICK  
D-RING MATERIAL: SEE S9202-D46LG DRAWING  
STRAP MATERIAL: SEE S9202-S46 DRAWING
2. BOLT HOLES ARE COUNTERSUNK FOR FLUSH FLAT HEAD CAP SCREWS INSTALLATION.
3. USE 1/2" ALLOY CAP SCREW
4. SEE S9202 FOR D RING AND STRAP DIMENSIONS AND STRENGTH DATA.
5. BOLT PLATE FINISH: THERMAL ZINC COATING AFTER ASSEMBLY  
STRAP FINISH: THERMAL ZINC COATING AFTER ASSEMBLY  
D-RING FINISH: HOT DIP GALVANIZED
6. WEIGHT: 8.7 LB.

UNLESS OTHERWISE SPECIFIED DIMENSIONS ARE IN INCHES		<input checked="" type="checkbox"/> TOLERANCES ARE: .XX ±.06 .XXX ±.030		LOST MAX CASTING TOL. IS: <input type="checkbox"/> 0" TO 4"±.030 <input type="checkbox"/> 4.01" TO 7"±.038 <input type="checkbox"/> 7.01" TO 10.5"±.045 <input type="checkbox"/> OVER 10.5" ±.052			
DRAWN MD		09-12-02		9202-P46GTZ D RING ON BOLT PLATE MBS 46,000 LB.			
CHECKED				SIZE D	CAGE CODE 65059	DWG NO. S9202-P	REV. -
DESIGN ACTIVITY				SCALE			SHEET 1 OF 2