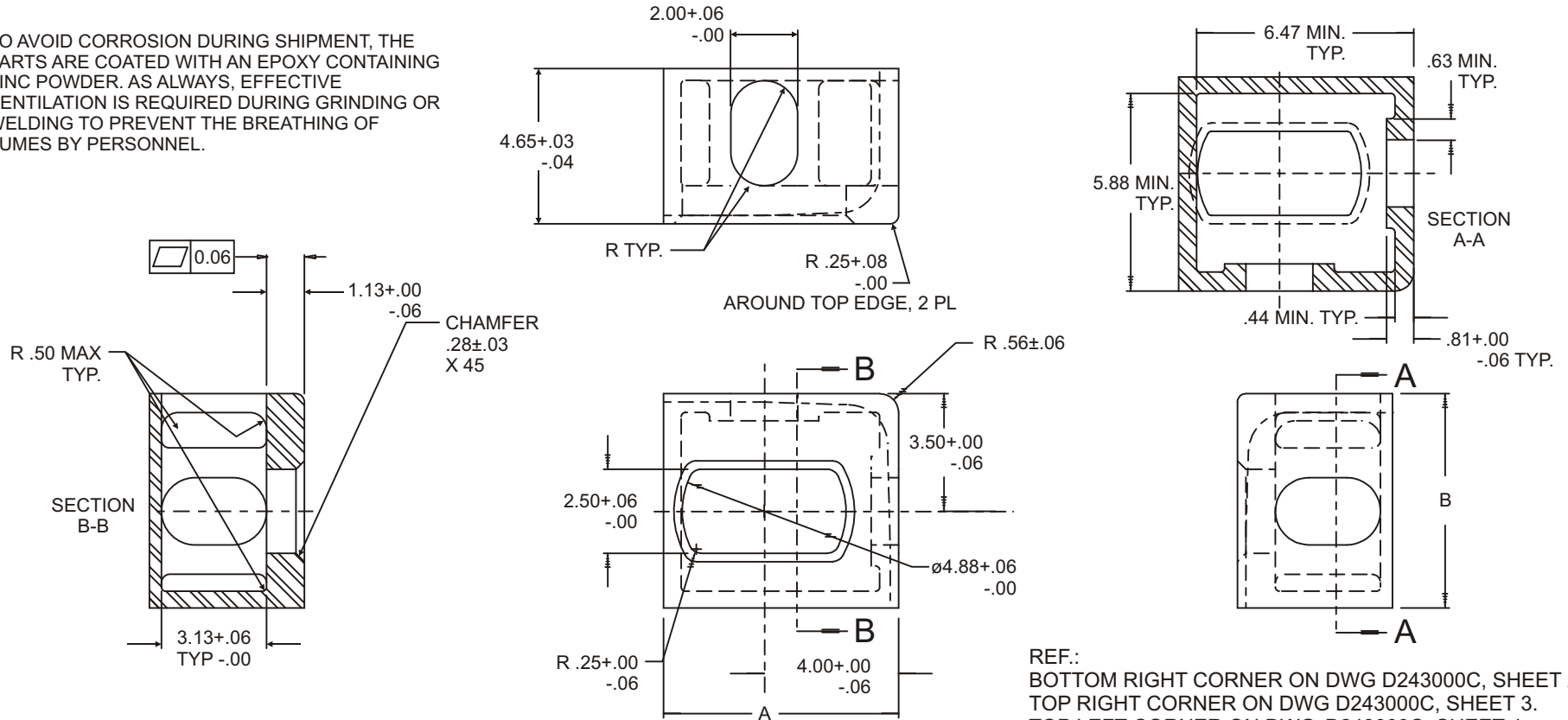


CORNER FITTING ISO 1161 TYPE - BOTTOM LEFT (243000C-BL)

Cage Code: 65059 | Drawing No: D243000C | Revision: E | Sheet: 1 of 4

UNLESS OTHERWISE SPECIFIED, DIMENSIONS ARE IN INCHES

TO AVOID CORROSION DURING SHIPMENT, THE PARTS ARE COATED WITH AN EPOXY CONTAINING ZINC POWDER. AS ALWAYS, EFFECTIVE VENTILATION IS REQUIRED DURING GRINDING OR WELDING TO PREVENT THE BREATHING OF FUMES BY PERSONNEL.



REF.:
 BOTTOM RIGHT CORNER ON DWG D243000C, SHEET 2.
 TOP RIGHT CORNER ON DWG D243000C, SHEET 3.
 TOP LEFT CORNER ON DWG D243000C, SHEET 4.

DESCRIPTION	ORDER NO.	MATERIAL	COUNTRY OF ORIGIN	WEIGHT	CONFORMS TO	DIMENSIONS	
						A	B
CORNER, BOTTOM LEFT	243000C-BL	LOW CARBON CAST STEEL FOR WELDING	CHINA	25 LB.	ISO 1161, ABS CERTIFIED	$7.01^{+0.01}_{-0.03}$	$6.38 \pm .02$

REV	DESCRIPTION	REVISIONS	DATE	APPROVED
A	$4.65 \pm .00 - .04$ WAS $\pm .00 - .02$, $7.01 \pm .01 - .03$ WAS $\pm .00 - .02$		04/27/00	MD
	$6.38 \pm .02 - .02$ WAS $\pm .00 - .04$			
B	$4.65 \pm .03 - .04$ WAS $4.65 \pm .00 - .04$		05/08/01	MD
C	ADDED STAINLESS STEEL CORNER		07/20/04	MRD
D	SEE ECO 07-024 "B"		06/06/07	DAH
E	ADDED CORROSION RESIST. NOTE W/ EFFECTIVE VENTIL		5/01/08	MD
F	REMOVED STAINLESS STEEL VERSION		9/4/12	DAH

To avoid lifter failure, potential death and property damage, never exceed WLL (Working Load Limit)

This document contains the proprietary information of Tandemloc, Inc. and your access and use shall be, and is at all times, pursuant to and limited by the Tandemloc, Inc. Terms of Use.

You shall not, and shall not encourage, assist, or authorize another party to copy, distribute, publically display, modify, reverse engineer, decompile, or take any other action to reproduce or replicate this document or the information contained herein. © Copyright 2012 by Tandemloc, Inc.

Dimensions are subject to manufacturing tolerance and change.



Email: info@tandemloc.com • www.tandemloc.com
 824 Highway 101 • Havelock, NC 28532
 TEL: 1.800.258.7324 (252.447.7155)
 FAX: 1.800.892.3273 (252.447.5502)

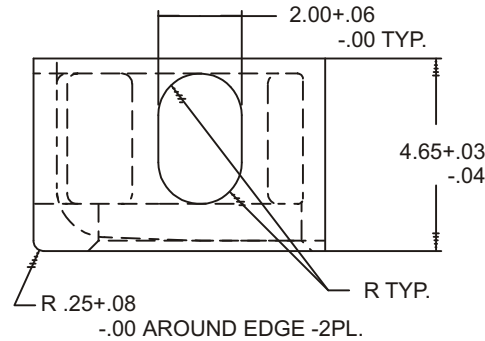
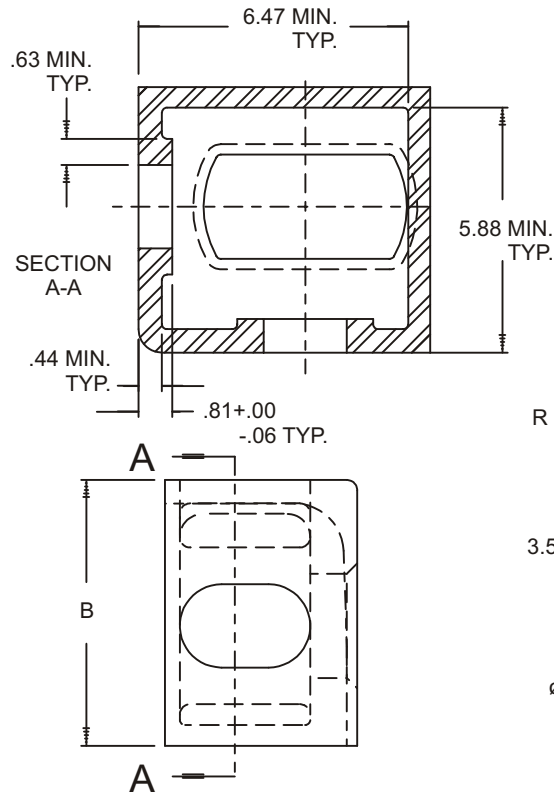
Tandemloc designs, manufactures and tests lifting, securing and mobilizing components for all industries. See our website for details and important safety information.

Read all safety labels and instructions prior to use. Product to be used by qualified personnel only.

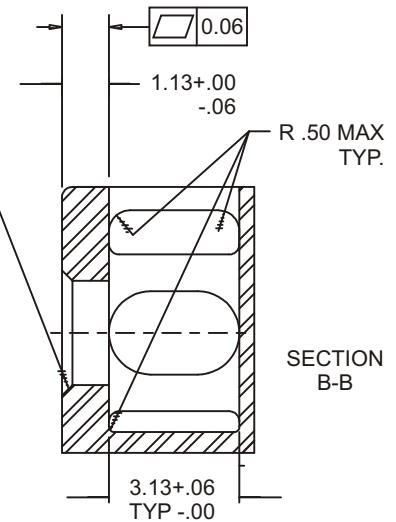
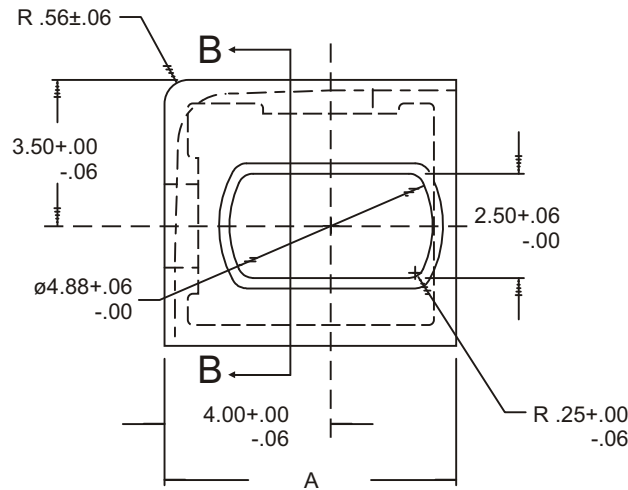
CORNER FITTING ISO 1161 TYPE - BOTTOM RIGHT (243000C-BR)

Cage Code: 65059 | Drawing No: D243000C | Revision: E | Sheet: 2 of 4

UNLESS OTHERWISE SPECIFIED, DIMENSIONS ARE IN INCHES



TO AVOID CORROSION DURING SHIPMENT, THE PARTS ARE COATED WITH AN EPOXY CONTAINING ZINC POWDER. AS ALWAYS, EFFECTIVE VENTILATION IS REQUIRED DURING GRINDING OR WELDING TO PREVENT THE BREATHING OF FUMES BY PERSONNEL.



REF.:
 BOTTOM LEFT CORNER ON DWG D243000C, SHEET 1.
 TOP RIGHT CORNER ON DWG D243000C, SHEET 3.
 TOP LEFT CORNER ON DWG D243000C, SHEET 4.

DESCRIPTION	ORDER NO.	MATERIAL	COUNTRY OF ORIGIN	WEIGHT	CONFORMS TO	DIMENSIONS	
						A	B
CORNER, BOT. RIGHT	243000C-BR	LOW CARBON CAST STEEL FOR WELDING	CHINA	25 LB.	ISO 1161, ABS CERTIFIED	7.01+.01-.03	6.38±.02

REVISIONS		
REV	DESCRIPTION	DATE APPROVED
A	4.65 ± .00 - .04 WAS ±.00 -.02, 7.01±.01-.03 WAS ±.00 -.02	04/27/00 MD
	6.38±.02 - .02 WAS ±.00 -.04	
B	4.65±.03 - .04 WAS 4.65±.00 - .04	05/08/01 MD
C	ADDED STAINLESS STEEL CORNER	07/20/04 MRD
D	SEE ECO 07-024 "B"	06/06/07 DAH
E	ADDED CORROSION RESIST. NOTE W/ EFFECTIVE VENTIL	5/01/08 MD
F	REMOVED STAINLESS STEEL VERSION	9/4/12 DAH

To avoid lifter failure, potential death and property damage, never exceed WLL (Working Load Limit)

This document contains the proprietary information of Tandemloc, Inc. and your access and use shall be, and is at all times, pursuant to and limited by the Tandemloc, Inc. Terms of Use.

You shall not, and shall not encourage, assist, or authorize another party to copy, distribute, publically display, modify, reverse engineer, decompile, or take any other action to reproduce or replicate this document or the information contained herein. © Copyright 2012 by Tandemloc, Inc.

Dimensions are subject to manufacturing tolerance and change.



Email: info@tandemloc.com • www.tandemloc.com
 824 Highway 101 • Havelock, NC 28532
 TEL: 1.800.258.7324 (252.447.7155)
 FAX: 1.800.892.3273 (252.447.5502)

Tandemloc designs, manufactures and tests lifting, securing and mobilizing components for all industries. See our website for details and important safety information.

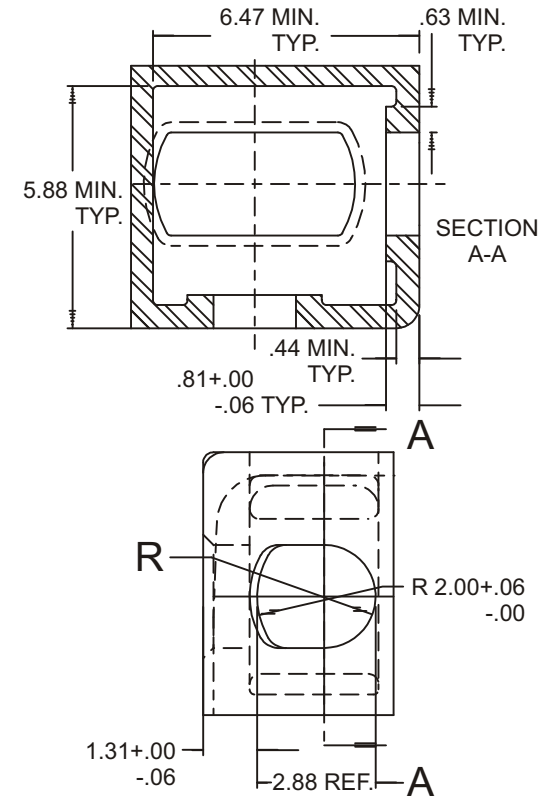
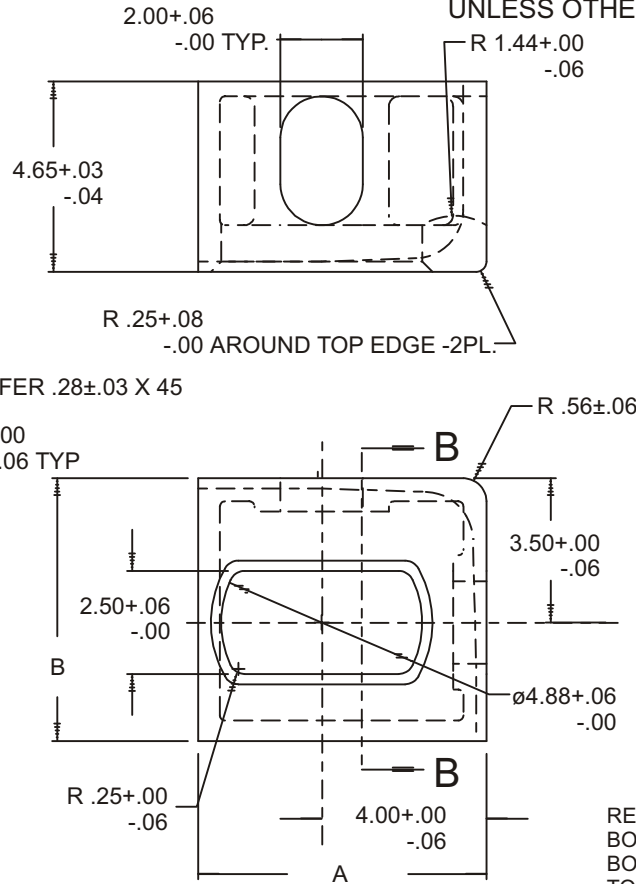
Read all safety labels and instructions prior to use. Product to be used by qualified personnel only.

CORNER FITTING ISO 1161 TYPE - TOP RIGHT (24300C-TR)

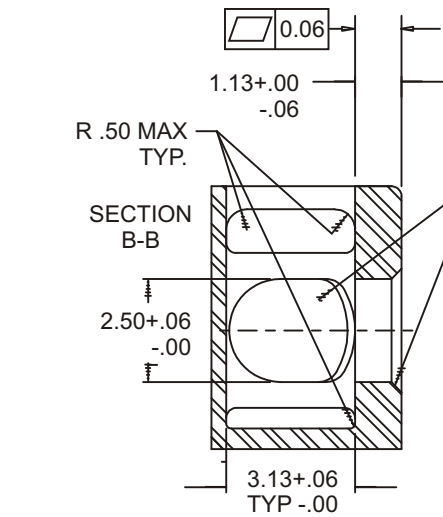
Cage Code: 65059 | Drawing No: D24300C | Revision: E | Sheet: 3 of 4

TO AVOID CORROSION DURING SHIPMENT, THE PARTS ARE COATED WITH AN EPOXY CONTAINING ZINC POWDER. AS ALWAYS, EFFECTIVE VENTILATION IS REQUIRED DURING GRINDING OR WELDING TO PREVENT THE BREATHING OF FUMES BY PERSONNEL.

UNLESS OTHERWISE SPECIFIED, DIMENSIONS ARE IN INCHES



REF:
 BOTTOM LEFT CORNER ON DWG D243000C, SHEET 1.
 BOTTOM RIGHT CORNER ON DWG D243000C, SHEET 2.
 TOP LEFT CORNER ON DWG D243000C, SHEET 4.



DESCRIPTION	ORDER NO.	MATERIAL	COUNTRY OF ORIGIN	WEIGHT	CONFORMS TO	DIMENSIONS	
						A	B
CORNER, TOP RIGHT	243000C-TR	LOW CARBON CAST STEEL FOR WELDING	CHINA	25 LB.	ISO 1161, ABS CERTIFIED	7.01+.01 -.03	6.38±.02

REVISIONS		
REV	DESCRIPTION	DATE APPROVED
A	4.65 ± .00 - .04 WAS ±.00 - .02, 7.01±.01-.03 WAS ±.00 - .02	04/27/00 MD
B	6.38±.02 - .02 WAS ±.00 - .04	
C	4.65±.03 - .04 WAS 4.65±.00 - .04	05/08/01 MD
D	ADDED STAINLESS STEEL CORNER	07/20/04 MRD
E	SEE ECO 07-024 "B"	06/06/07 DAH
F	ADDED CORROSION RESIST. NOTE W/ EFFECTIVE VENTIL	5/01/08 MD
	REMOVED STAINLESS STEEL VERSION	9/4/12 DAH

To avoid lifter failure, potential death and property damage, never exceed WLL (Working Load Limit)

This document contains the proprietary information of Tandemloc, Inc. and your access and use shall be, and is at all times, pursuant to and limited by the Tandemloc, Inc. Terms of Use.

You shall not, and shall not encourage, assist, or authorize another party to copy, distribute, publically display, modify, reverse engineer, decompile, or take any other action to reproduce or replicate this document or the information contained herein. © Copyright 2012 by Tandemloc, Inc.

Dimensions are subject to manufacturing tolerance and change.



Email: info@tandemloc.com • www.tandemloc.com
 824 Highway 101 • Havelock, NC 28532
 TEL: 1.800.258.7324 (252.447.7155)
 FAX: 1.800.892.3273 (252.447.5502)

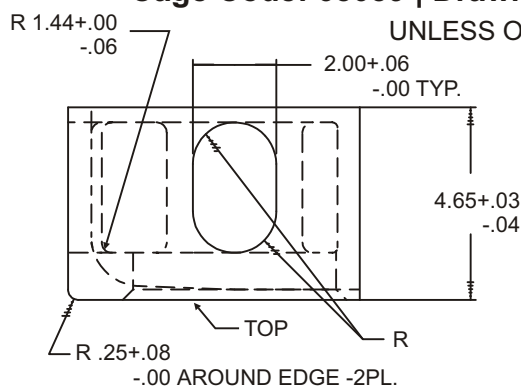
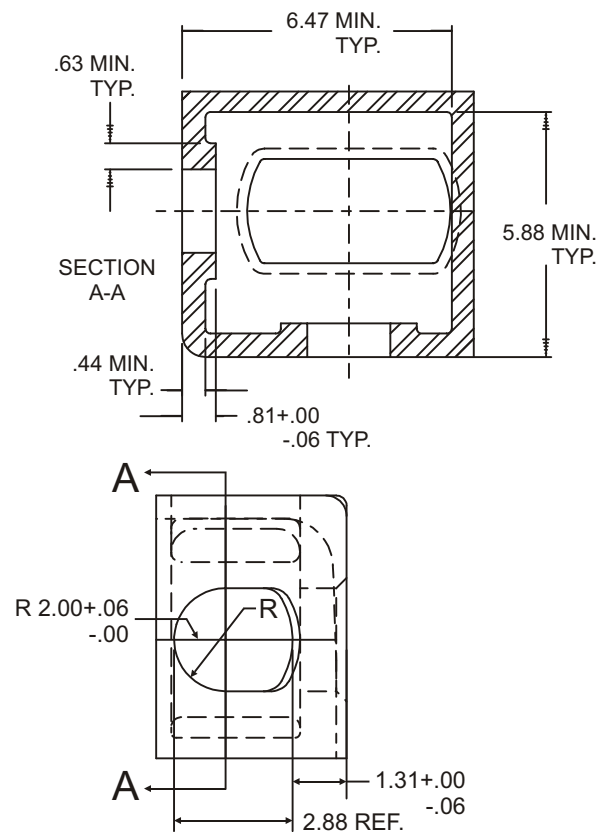
Tandemloc designs, manufactures and tests lifting, securing and mobilizing components for all industries. See our website for details and important safety information.

Read all safety labels and instructions prior to use. Product to be used by qualified personnel only.

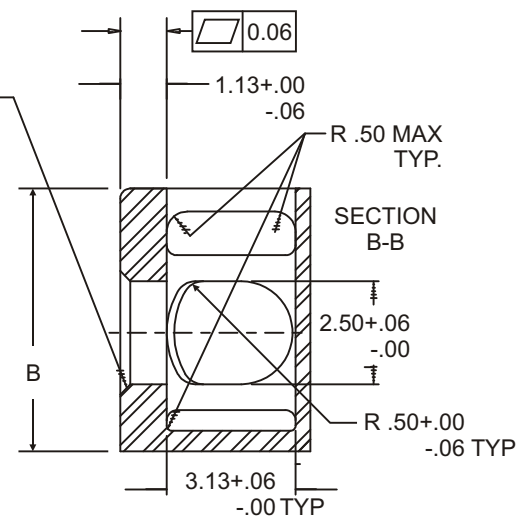
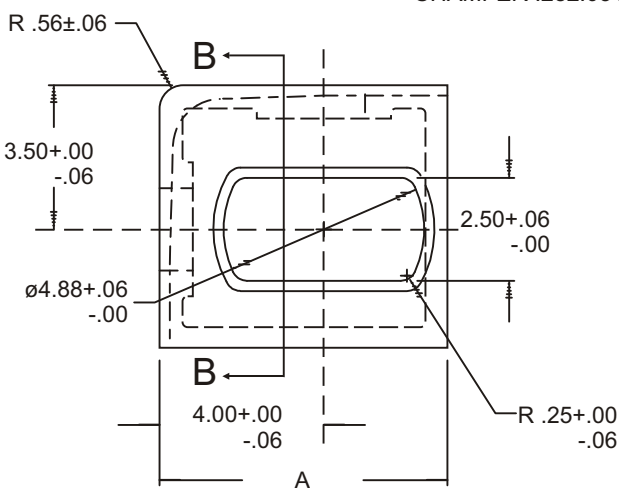
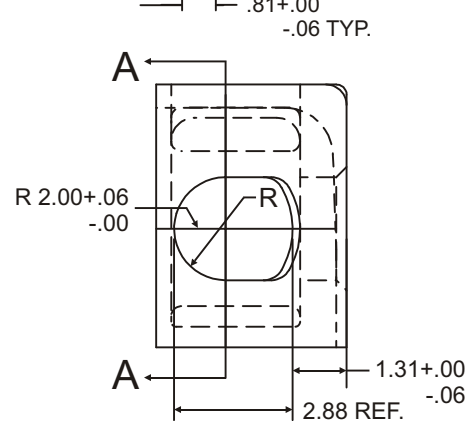
CORNER FITTING ISO 1161 TYPE - TOP LEFT (243000C-TL)

Cage Code: 65059 | Drawing No: D243000C | Revision: E | Sheet: 4 of 4

UNLESS OTHERWISE SPECIFIED, DIMENSIONS ARE IN INCHES



TO AVOID CORROSION DURING SHIPMENT, THE PARTS ARE COATED WITH AN EPOXY CONTAINING ZINC POWDER. AS ALWAYS, EFFECTIVE VENTILATION IS REQUIRED DURING GRINDING OR WELDING TO PREVENT THE BREATHING OF FUMES BY PERSONNEL.



REF.:
 BOTTOM LEFT CORNER ON DWG D243000C, SHEET 1.
 BOTTOM RIGHT CORNER ON DWG D243000C, SHEET 2.
 TOP RIGHT CORNER ON DWG. D243000C, SHEET 3.

DESCRIPTION	ORDER NO.	MATERIAL	COUNTRY OF ORIGIN	WEIGHT	CONFORMS TO	DIMENSIONS	
						A	B
CORNER, TOP LEFT	243000C-TL	LOW CARBON CAST STEEL FOR WELDING	CHINA	25 LB.	ISO 1161, ABS CERTIFIED	7.01+.01-.03	6.38±.02

REVISIONS		
REV	DESCRIPTION	DATE APPROVED
A	4.65 ± .00 - .04 WAS ± .00 - .02, 7.01±.01-.03 WAS ± .00 - .02	04/27/00 MD
B	6.38±.02 - .02 WAS ±.00 - .04	
C	4.65±.03 - .04 WAS 4.65±.00 - .04	05/08/01 MD
D	ADDED STAINLESS STEEL CORNER	07/20/04 MRD
E	SEE ECO 07-024 "B"	06/06/07 DAH
F	ADDED CORROSION RESIST. NOTE W/ EFFECTIVE VENTIL	5/01/08 MD
	REMOVED STAINLESS STEEL VERSION	9/4/12 DAH

To avoid lifter failure, potential death and property damage, never exceed WLL (Working Load Limit)

This document contains the proprietary information of Tandemloc, Inc. and your access and use shall be, and is at all times, pursuant to and limited by the Tandemloc, Inc. Terms of Use.

You shall not, and shall not encourage, assist, or authorize another party to copy, distribute, publically display, modify, reverse engineer, decompile, or take any other action to reproduce or replicate this document or the information contained herein. © Copyright 2012 by Tandemloc, Inc.

Dimensions are subject to manufacturing tolerance and change.



Email: info@tandemloc.com • www.tandemloc.com
 824 Highway 101 • Havelock, NC 28532
 TEL: 1.800.258.7324 (252.447.7155)
 FAX: 1.800.892.3273 (252.447.5502)

Tandemloc designs, manufactures and tests lifting, securing and mobilizing components for all industries. See our website for details and important safety information.

Read all safety labels and instructions prior to use. Product to be used by qualified personnel only.