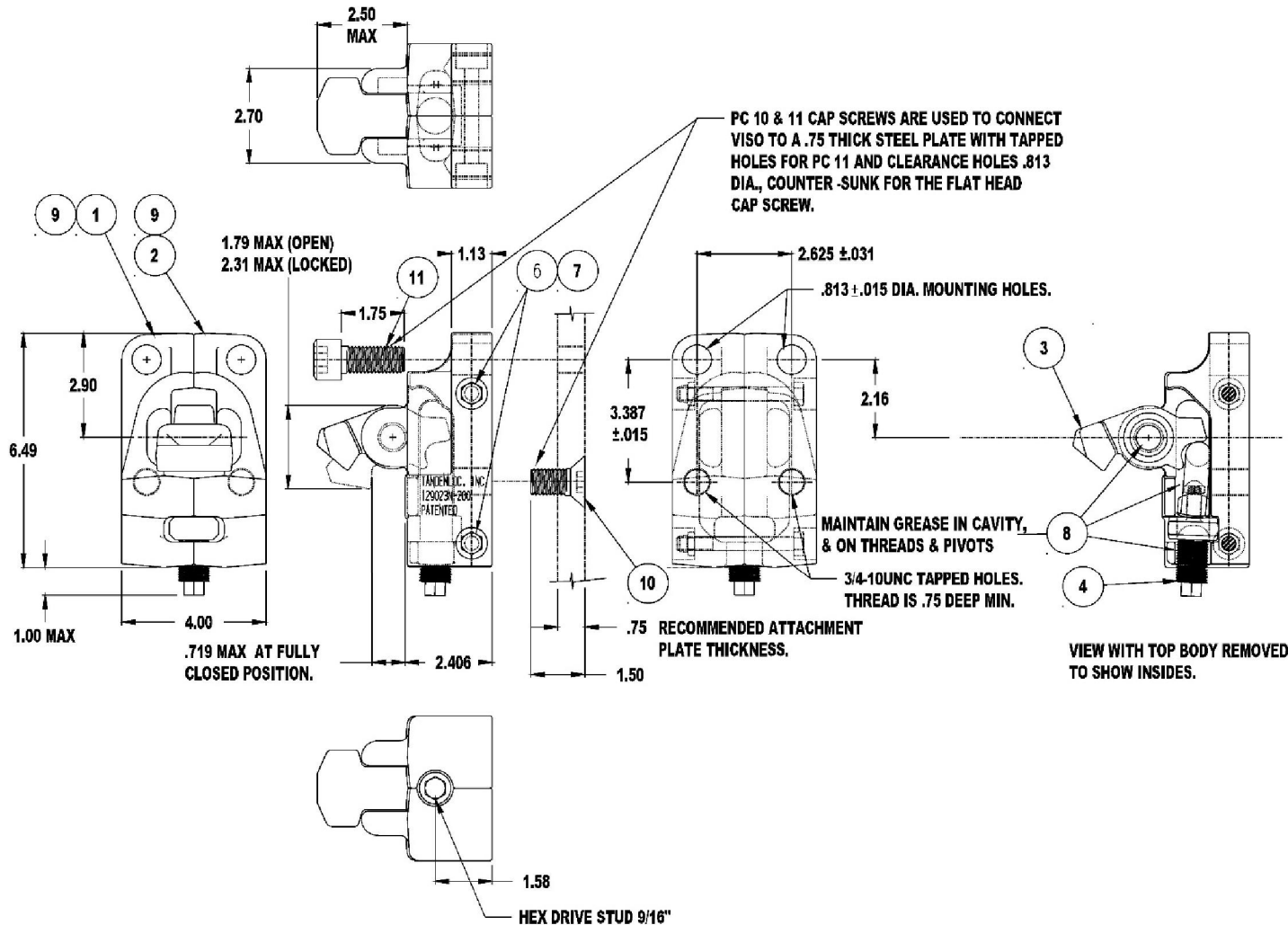


Horizontal Clamp Connector (12905BA-3PA)

Cage Code: 65059 | Drawing No: 12905BA-3PA | Revision: - | Sheet: 1 of 1

UNLESS OTHERWISE SPECIFIED, DIMENSIONS ARE IN INCHES



NOTE:

- ORDER NO.: #12905BA-3PA
- STRENGTH RATING: (MAX ALLOWABLE LOADING)
TENSION ON CLAMP ARM- 35,000 LB.
COMPRESSION ON BODY- 200,000 LB.
SHEAR ON NOSE- 50,000 LB.
ULTIMATE STRENGTHS ARE 122% OF RATINGS.
- FINISH- PRIMER PAINTED.
- WEIGHT- 14.45 LB.
- USERS SHOULD ONLY USE THIS CLAMP WHEN IT IS FULLY & FIRMLY TIGHTENED WITH 40 TO 50 FT./LB. OF TORQUE INTO SIDE OR END HOLES OF ISO 1161 CORNER FITTINGS. AVOID USING HIGH POWERED IMPACT WRENCHES TO LOOSEN.
- PART IS THE SAME AS THE 12905BA-2PA EXCEPT THE BODIES ARE FULLY MACHINED.
- SUGGESTED WLL'S (BASED ON 2:1 TO YIELD):
TENSION: 17,500 LB.
COMPRESSION: 100,000 LB.
SHEAR: 25,000 LB.

PC. NO.	QUAN	PART NO. AND DESCRIPTION
11	2	WSC007510000175 SOCK HD CAP SCREW GR8 ZN PL
10	2	WFH007510000150 FLAT HD SOCKET CAP SCREW GR 8 ZN PL
9	.001g.	PAINT GRAY PRIMER PER PROC 2005.04
8	.019g.	\$CCNLS3190 GREASE, STA-FLEX PREMIUM RED
7	2	UPS003816000047 LOCKNUT PLAS. INSERT STL ZN PL
6	2	WHB003816000325 HEX BOLT, GR 8 STL, ZN PL
5	-	-
4	1	12930BA-1PZ DRIVE STUD ASSEMBLY
3	1	12940BB-1PA CLAMP ARM PAINTED
2	1	129024N-200 BLTR BODY MACHINED H.T.
1	1	129024N-100 TLBR BODY MACHINED H.T.
LIST OF MATERIALS		

To avoid lifter failure, potential death and property damage, never exceed WLL (Working Load Limit).

This document contains the proprietary information of Tandemloc, Inc. and your access and use shall be, and is at all times, pursuant to and limited by the Tandemloc, Inc. Terms of Use.

You shall not, and shall not encourage, assist, or authorize another party to copy, distribute, publicly display, modify, reverse engineer, decompile, or take any other action to reproduce this document or the information contained herein. © Copyright 2014 by Tandemloc, Inc.

Dimensions are subject to manufacturing tolerance and change.



Email: info@tandemloc.com • www.tandemloc.com

824 Highway 101 • Havelock, NC 28532

Tel: 1.800.258.7324 (252.447.7155)

FAX 1.800.892.3273 (252.447.5502)

Tandemloc, Inc. designs, manufactures and tests lifting, securing and mobilizing components for all industries. See our website for details and important safety information.

Read all safety labels and instructions prior to use. Product to be used by qualified personnel only.