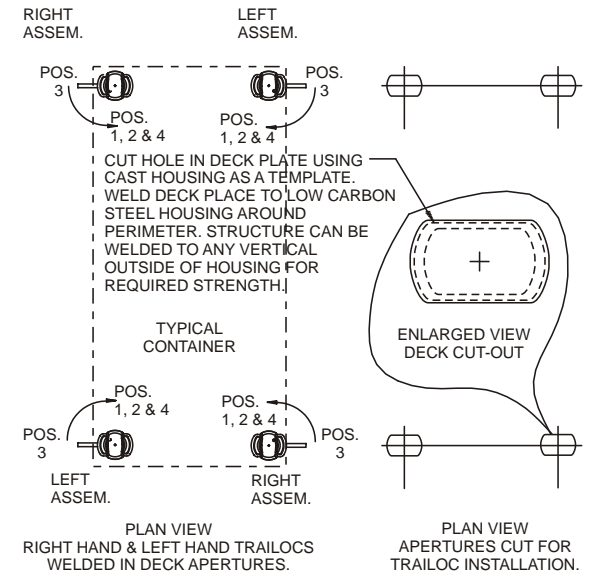
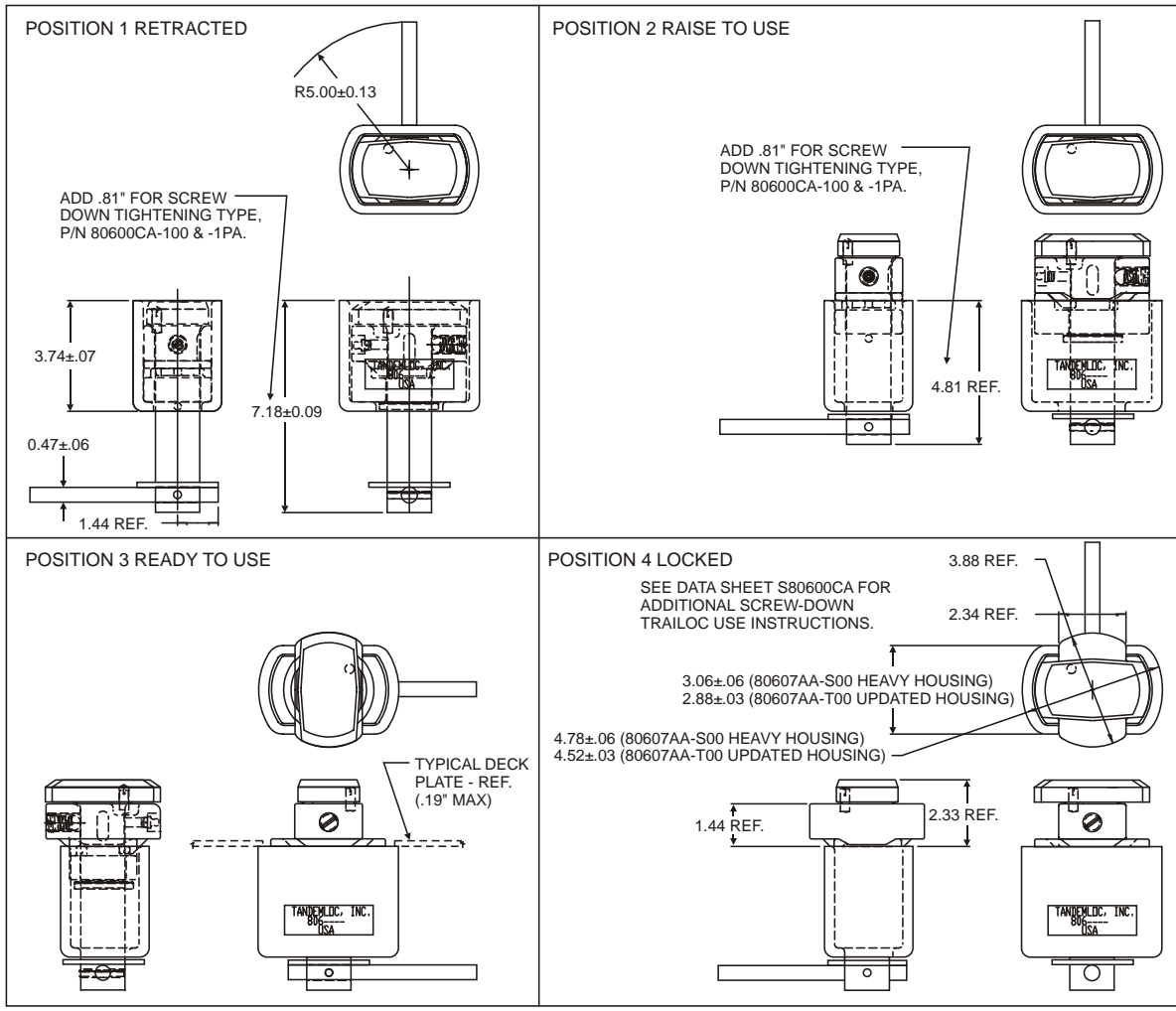


# RETRACTABLE TRAILOC - TYP ASSEM. & USE DIMENSIONS (80600BA & 80600DA TYPES)

**Cage Code: 65059 | Drawing No: D80600AA | Revision: C | Sheet: 1 of 1**

UNLESS OTHERWISE SPECIFIED, DIMENSIONS ARE IN INCHES  
DO NOT SCALE DRAWING



TRAILOCS ARE LOCATED SO AS TO INSERT AND LOCK INTO THE ISO 1161 CORNER FITTINGS LOCATED ON STANDARD ISO (668) TYPE CONTAINERS IN CONJUNCTION WITH THE ABOVE DATA. LOCATE TRAILOC USING ISO 668 DATA OR TANDEMLOC DATA SHEET DF 72047-16 FOR MALE FITTINGS OR OTHER APPROPRIATE DATA.

CAUTION - HANDLE DIRECTIONS & TYPE VARY IN DIFFERENT ASSEMBLIES. CHECK FIT AND OPERATING CLEARANCES BEFORE FINAL WELDING.

REF.:  
CUST INSP. FINAL ASSEM. S806AX1X, S80600DA, S80609CA, S80600BA & S80600AA.

REVISIONS		DATE	APPROVED
REV	DESCRIPTION		
A	UPDATED TO SHOW NEW P/N & SCREW DOWN TYPE. DWG NO. WAS A806061X.	10/11/96	MD
B	ADDED NEW INSTALLATION & WELD DATA	05/11/99	MD
C	DEFINED HEAVY/UPDATED HOUSING DIM. 3.88 WAS 3.19 (TYPO)	12/3/99	MD

**DANGER: Never Exceed WLL (Working Load Limit)**  
This document contains data which is either patented, patent pending or is the property of Tandemloc, Inc. Disclosure, or copying without the written authorization of Tandemloc, Inc. Is expressly prohibited. © Copyright 2010 by Tandemloc, Inc. Dimensions are subject to manufacturing tolerance and change.



Email: [info@tandemloc.com](mailto:info@tandemloc.com) • [www.tandemloc.com](http://www.tandemloc.com)  
PO Box 279 • 824 Highway 101 • Havelock, NC 28532-0279  
TEL: 1.800.258.7324 (252.447.7155)  
FAX: 1.800.892.3273 (252.447.5502)

Tandemloc designs, manufactures and tests lifting, securing and mobilizing components for all industries. See our website for details and important safety information.

Tandemloc is a member of: