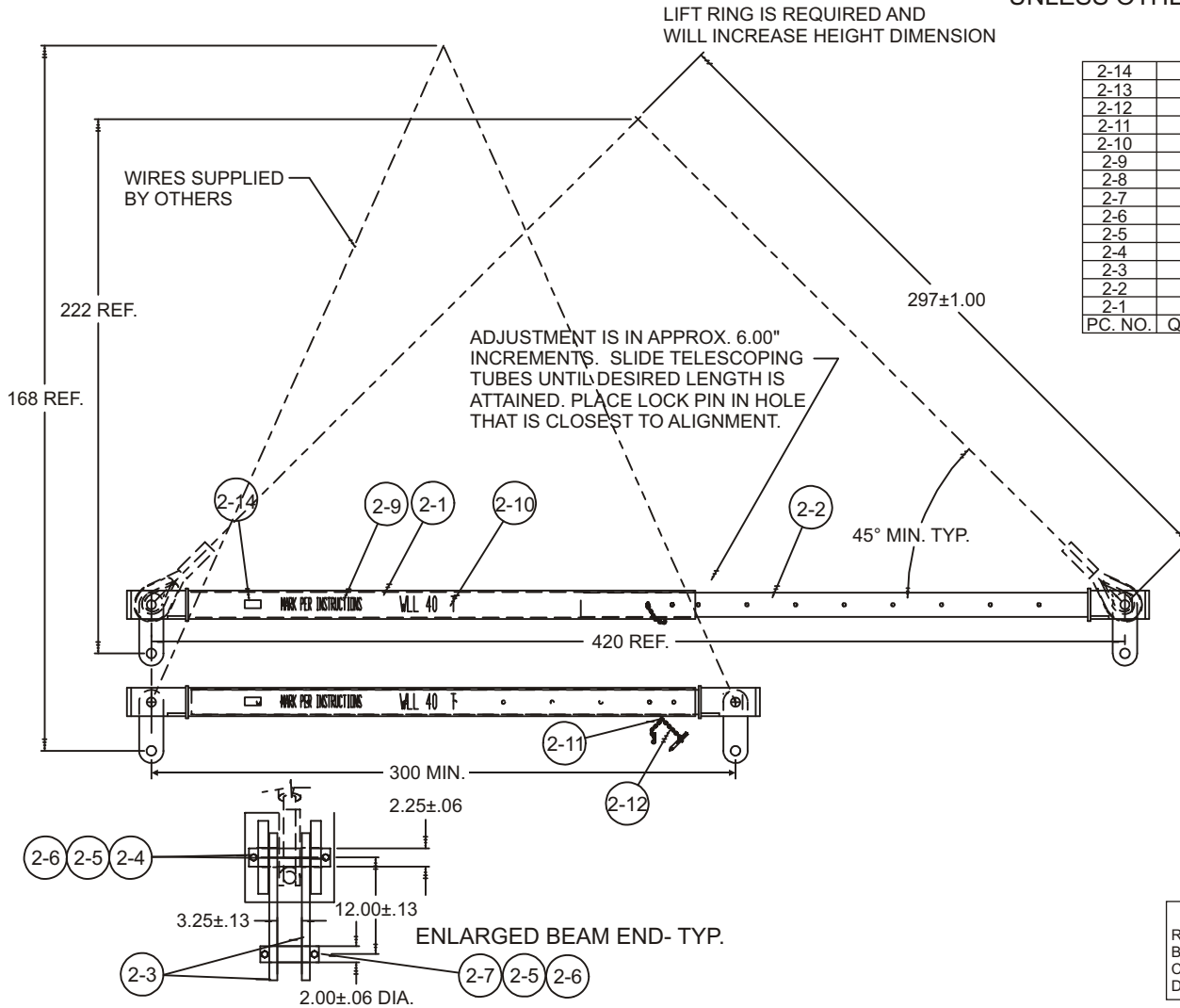


LIFT BEAM, ADJUSTABLE, 25' TO 35', WLL 40 T. (S4000B-2PA)

Cage Code: 65059 | Drawing No: SS4000B | Revision: D | Sheet: 1 of 1

UNLESS OTHERWISE SPECIFIED, DIMENSIONS ARE IN INCHES



LIST OF MATERIALS		
2-14	1	TEST PLATE LOCATION
2-13	-	
2-12	1	\$COE687492 "S" HOOK, STEEL, ZINC PLATED
2-11	1	S40030A-APA ADJUSTING PIN & LANYARD ASSEM.
2-10	2	DECAL, VINYL, BLACK, 4" "WLL 40 T"
2-9	2	DECAL, PER INSTRUCTIONS
2-8	-	
2-7	2	S40000B-46P ALLOY PIN, STL, PAINTED (SEE SHT 4)
2-6	8	UPS005013000061 LOCKNUT, PLAST INS. STL, ZN PL.
2-5	8	WHB005013000300 HEX BOLT ALLOY STL, ZN PL.
2-4	2	S40000B-45P HINGE PIN, ALLOY STEEL, PAINTED (SHT 4)
2-3	4	S40000B-44P LINK, PAINTED (SEE SHEET 4)
2-2	1	S40000B-63P INNER TUBE 25/35 ASSEM, PAINTED
2-1	1	S40000B-52P OUTER TUBE 25/35 ASSEM, PAINTED
PC. NO.	QUAN	PART NO. AND DESCRIPTION

NOTE:

1. MATERIAL: STEEL
2. WEIGHT: ADJ. BEAM- 1631 LB
3. WORK LOAD LIMIT(WLL) 40 T. (80,000LB.)
4. PROOF TEST WLL X 125%.
5. LIFT FROM TOP RING WITH 50% OF LOAD SUSPENDED VERTICALLY FROM EACH END CLEVIS.

REVISIONS		DATE	APPROVED
REV	DESCRIPTION		
B	ADDED SHEET 2 WITH S40000B-2PA ASSEM.	01/25/99	MD
C	ADDED PC 8 SLING TO SHEET 1	03/10/99	MD
D	3.25±.13 WAS 3.00±.13	05/14/02	MD

To avoid lifter failure, potential death and property damage, never exceed WLL (Working Load Limit)

This document contains the proprietary information of Tandemloc, Inc. and your access and use shall be, and is at all times, pursuant to and limited by the Tandemloc, Inc. Terms of Use.

You shall not, and shall not encourage, assist, or authorize another party to copy, distribute, publically display, modify, reverse engineer, decompile, or take any other action to reproduce or replicate this document or the information contained herein. © Copyright 2012 by Tandemloc, Inc.

Dimensions are subject to manufacturing tolerance and change.



Email: info@tandemloc.com • www.tandemloc.com
 824 Highway 101 • Havelock, NC 28532
 TEL: 1.800.258.7324 (252.447.7155)
 FAX: 1.800.892.3273 (252.447.5502)

Tandemloc designs, manufactures and tests lifting, securing and mobilizing components for all industries. See our website for details and important safety information.
 Read all safety labels and instructions prior to use. Product to be used by qualified personnel only.