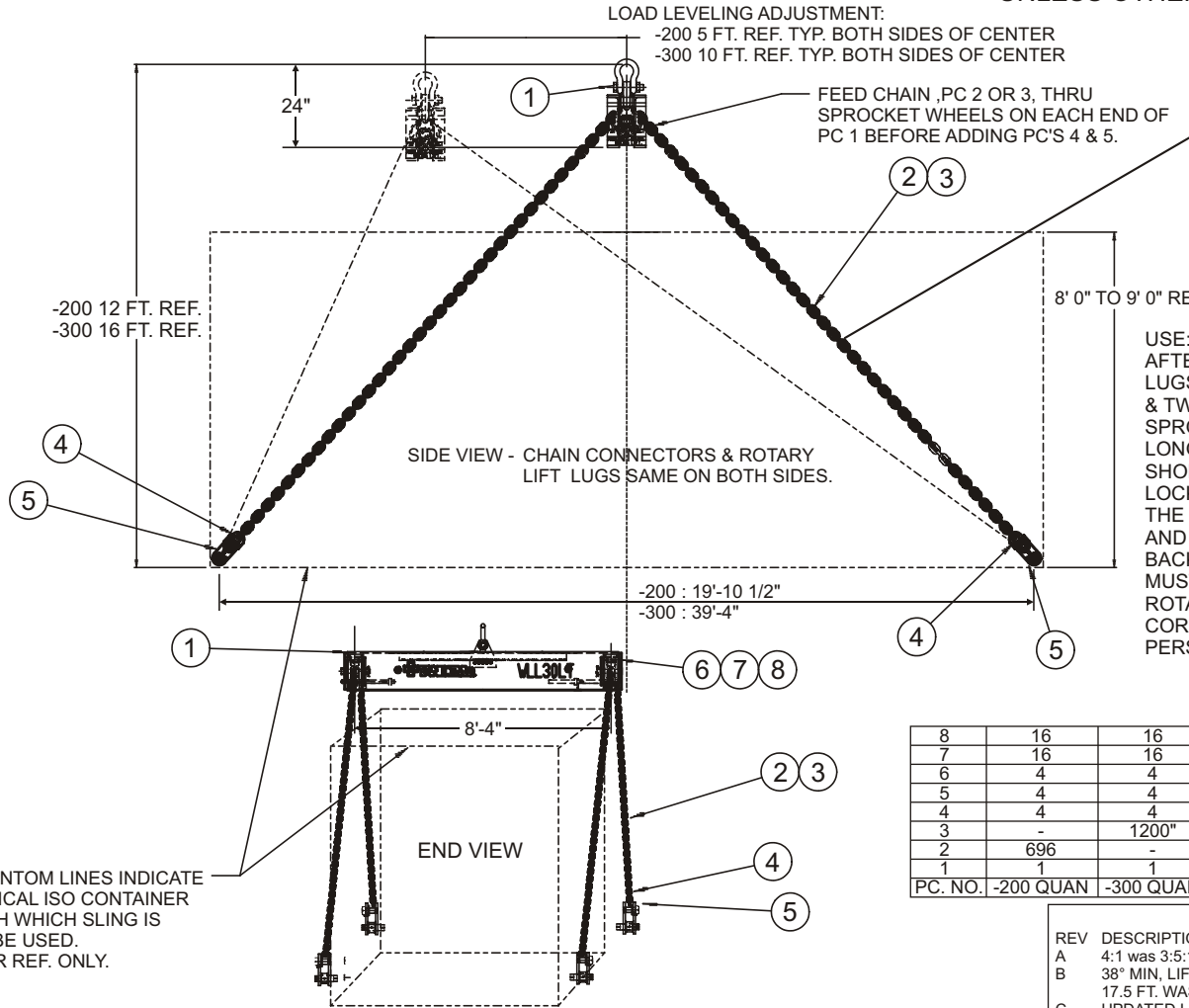


ISO CONTAINER BOTTOM LIFTING & LOAD LEVELING SLING ASSEM. (K1000AA-200 & K1000AA-300)

Cage Code: 65059 | Drawing No: SK1000AA | Revision: C | Sheet: 1 of 1

UNLESS OTHERWISE SPECIFIED, DIMENSIONS ARE IN INCHES



K1000AA-200 FOR 20 FT. (LONG) ISO CONTAINER
K1000AA-300 FOR 40 FT. (LONG) ISO CONTAINER

WLL 30 L.T. @ MIN LIFT ANGLE OF ALL 4 CHAINS AT 38° TO HORIZONTAL. (4:1 SAFETY FACTOR), GRADE 80 ALLOY CHAIN IS USED. GRADE 100 ALLOY CHAIN CAN BE USED FOR LOWER LIFT HEIGHT & 30 L.T. WLL.

WEIGHT: -200 1520 LB.
-300 1689 LB.

USE:
AFTER PLACING SLING IN POSITION SHOWN, INSERT ROTARY LUGS INTO SIDE HOLES OF THE FOUR ISO 1161 CORNER FITTINGS & TWIST LOCK. IF CENTER OF GRAVITY IS KNOWN, UNLOCK CHAIN SPROCKET WHEELS AND PULL ON THE CHAIN LEGS TO BE MADE LONGER. CAUTION- NEVER HOLD CHAIN LEG WHICH IS BEING SHORTENED & KEEP HANDS AWAY FROM SPROCKET WHEELS. LOCK SPROCKET WHEELS WHEN LENGTH DESIRED IS ATTAINED. THE TOP SHACKLE CAN BE MOVED WHEN IT IS NOT UNDER LOAD AND IS SWUNG TO HORIZONTAL. THE ACTION OF SWINGING IT BACK TO VERTICAL LOCKS IT FOR USE. IF CG IS NOT KNOWN, IT MUST BE DETERMINED BY EST. AND TRIAL. BEFORE LIFTING, ROTARY LUGS & SPROCKET WHEELS MUST BE LOCKED IN CORRECT POSITION. INSURE THAT CHAIN IS NOT KINKED AND PERSONNEL ARE CLEAR OF HAZARD.

REF.: SK1000AA SIMILAR SLING FOR EA-68 VAN

LIST OF MATERIALS

8	16	16	LOCTITE 271, PERM., RED
7	16	16	HEX BOLT G2 STL 3/8-16X.75 ZN PL
6	4	4	SPROCKET COVER, PAINTED
5	4	4	ROTARY LIFT LUG
4	4	4	ALLOY STEEL CHAIN GR 80 CONNECTOR
3	-	1200"	TWO LGS. 3/4" GR 80 ALLOY STL CHAIN X 49.5'ABT.
2	696	-	TWO LGS. 3/4" GR 80 ALLOY STL CHAIN X 29'ABT.
1	1	1	LOAD LEVELING LIFT BAR
PC. NO.	-200 QUAN	-300 QUAN	PART NO. AND DESCRIPTION

REVISIONS		DATE	APPROVED
REV	DESCRIPTION		
A	4:1 was 3.5:1, ADDED LENGTH, 8'-4", & 24" DIMS	10/28/03	MD
B	38° MIN, LIFT ANGLE & GRADE 80 & 100 CHAIN NOTE ADDED. 17.5 FT. WAS 16 FT.	01/12/05	MD
C	UPDATED L/M PC 80: LOCTITE, WAS LOCKNUT	02/27/07	ML

PHANTOM LINES INDICATE TYPICAL ISO CONTAINER WITH WHICH SLING IS TO BE USED.
-FOR REF. ONLY.

To avoid lifter failure, potential death and property damage, never exceed WLL (Working Load Limit)

This document contains the proprietary information of Tandemloc, Inc. and your access and use shall be, and is at all times, pursuant to and limited by the Tandemloc, Inc. Terms of Use.

You shall not, and shall not encourage, assist, or authorize another party to copy, distribute, publically display, modify, reverse engineer, decompile, or take any other action to reproduce or replicate this document or the information contained herein. © Copyright 2012 by Tandemloc, Inc.

Dimensions are subject to manufacturing tolerance and change.



Email: info@tandemloc.com • www.tandemloc.com
824 Highway 101 • Havelock, NC 28532
TEL: 1.800.258.7324 (252.447.7155)
FAX: 1.800.892.3273 (252.447.5502)

Tandemloc designs, manufactures and tests lifting, securing and mobilizing components for all industries. See our website for details and important safety information.

Read all safety labels and instructions prior to use. Product to be used by qualified personnel only.