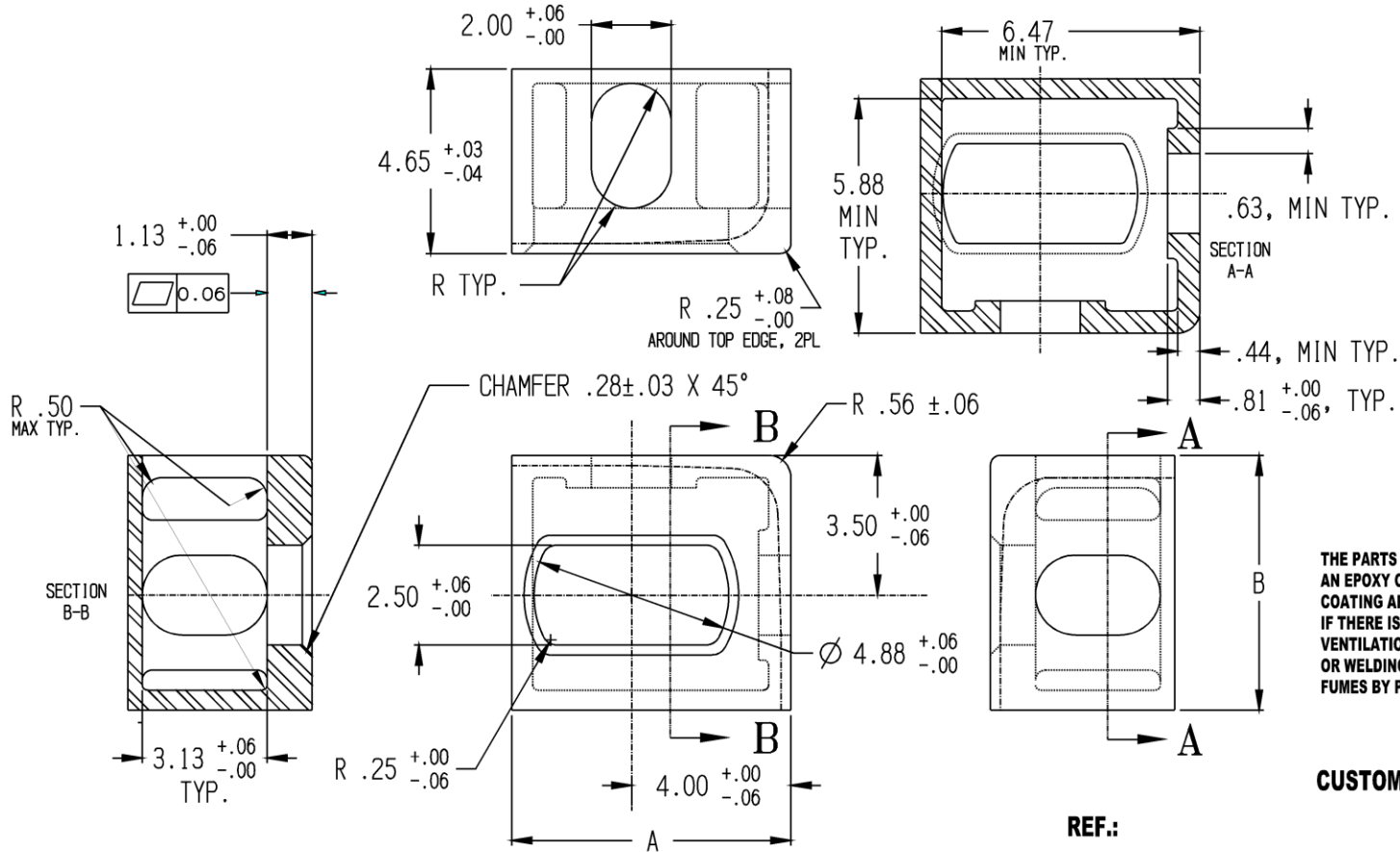


BOTTOM LEFT CORNER FITTING (243000C)

Cage Code: 65059 | Drawing No: D243000C | Revision: F | Sheet: 1 of 4

UNLESS OTHERWISE SPECIFIED, DIMENSIONS ARE IN INCHES



THE PARTS MAY OR MAY NOT BE COATED WITH AN EPOXY CONTAINING ZINC POWDER OR ZINC COATING APPLIED VIA A THERMAL ZINC PROCESS. IF THERE IS A ZINC COATING, EFFECTIVE VENTILATION IS REQUIRED DURING GRINDING OR WELDING TO PREVENT THE BREATHING OF FUMES BY PERSONNEL.

CUSTOMER INSPECTION DWG.

REF.:

BOTTOM RIGHT CORNER ON DWG D243000C, SHEET 2.
TOP RIGHT CORNER ON DWG D243000C, SHEET 3.
TOP LEFT CORNER ON DWG D243000C, SHEET 4.

DESCRIPTION	ORDER NO.	MATERIAL	COUNTRY OF ORIGIN	WEIGHT	CONFORMS TO	DIMENSIONS	
						A	B
CORNER, BOTTOM LEFT	243000C-BL	LOW CARBON CAST STEEL FOR WELDING	CHINA	25 LB	ISO 1161, ABS CERTIFIED	7.01 (+.01, -.03)	6.38 ± .02

To avoid lifter failure, potential death and property damage, never exceed WLL (Working Load Limit).

This document contains the proprietary information of Tandemloc, Inc. and your access and use shall be, and is at all times, pursuant to and limited by the Tandemloc, Inc. Terms of Use.

You shall not, and shall not encourage, assist, or authorize another party to copy, distribute, publicly display, modify, reverse engineer, decompile, or take any other action to reproduce this document or the information contained herein. © Copyright 2014 by Tandemloc, Inc.

Dimensions are subject to manufacturing tolerance and change.



Email: info@tandemloc.com • www.tandemloc.com
824 Highway 101 • Havelock, NC 28532
Tel: 1.800.258.7324 (252.447.7155)
FAX 1.800.892.3273 (252.447.5502)

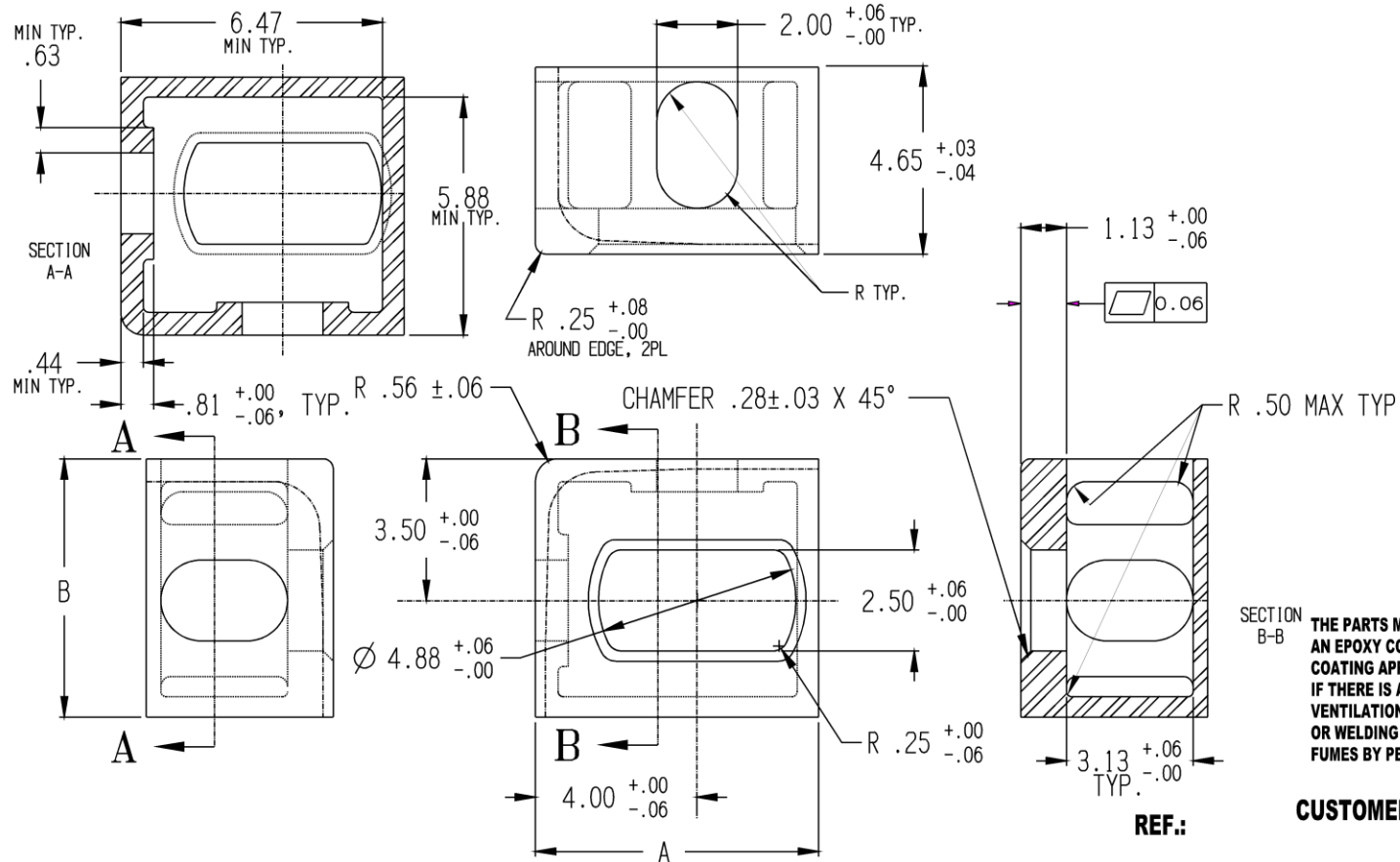
Tandemloc, Inc. designs, manufactures and tests lifting, securing and mobilizing components for all industries. See our website for details and important safety information.

Read all safety labels and instructions prior to use. Product to be used by qualified personnel only.

BOTTOM RIGHT CORNER FITTING (243000C)

Cage Code: 65059 | Drawing No: D243000C | Revision: F | Sheet: 2 of 4

UNLESS OTHERWISE SPECIFIED, DIMENSIONS ARE IN INCHES



REF.: CUSTOMER INSPECTION DWG.

BOTTOM LEFT CORNER ON DWG D243000C, SHEET 1.
 TOP RIGHT CORNER ON DWG D243000C, SHEET 3.
 TOP LEFT CORNER ON DWG D243000C, SHEET 4.

DESCRIPTION	ORDER NO.	MATERIAL	COUNTRY OF ORIGIN	WEIGHT	CONFORMS TO	DIMENSIONS	
						A	B
CORNER, BOTTOM RIGHT	243000C-BR	LOW CARBON CAST STEEL FOR WELDING	CHINA	25 LB	ISO 1161, ABS CERIFIED	7.01 +.01/-0.03	6.38 ±.02

To avoid lifter failure, potential death and property damage, never exceed WLL (Working Load Limit).

This document contains the proprietary information of Tandemloc, Inc. and your access and use shall be, and is at all times, pursuant to and limited by the Tandemloc, Inc. Terms of Use.

You shall not, and shall not encourage, assist, or authorize another party to copy, distribute, publicly display, modify, reverse engineer, decompile, or take any other action to reproduce this document or the information contained herein. © Copyright 2014 by Tandemloc, Inc.

Dimensions are subject to manufacturing tolerance and change.



Email: info@tandemloc.com • www.tandemloc.com
 824 Highway 101 • Havelock, NC 28532
 Tel: 1.800.258.7324 (252.447.7155)
 FAX 1.800.892.3273 (252.447.5502)

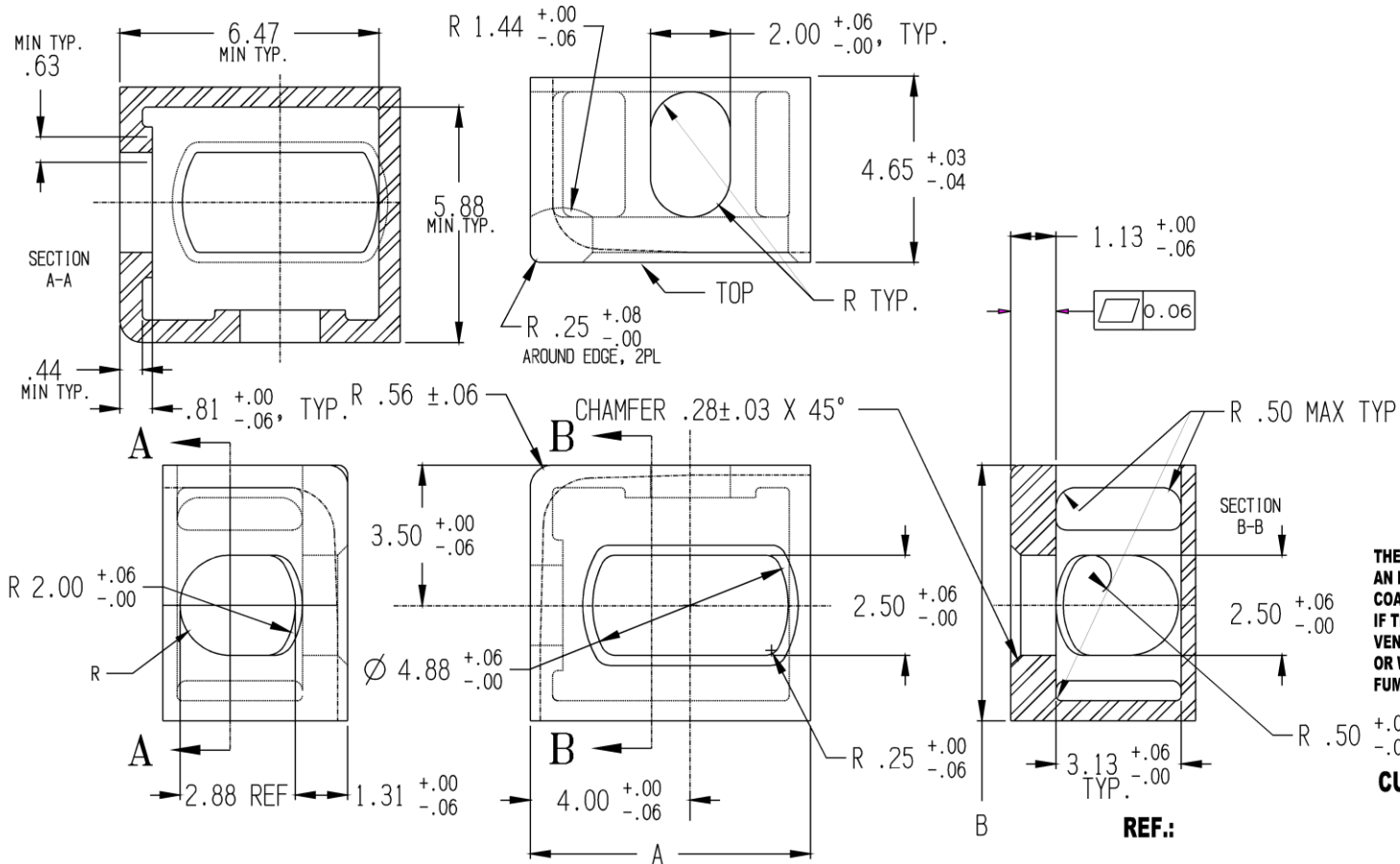
Tandemloc, Inc. designs, manufactures and tests lifting, securing and mobilizing components for all industries. See our website for details and important safety information.

Read all safety labels and instructions prior to use. Product to be used by qualified personnel only.

TOP LEFT CORNER FITTING (243000C)

Cage Code: 65059 | Drawing No: D243000C | Revision: F | Sheet: 4 of 4

UNLESS OTHERWISE SPECIFIED, DIMENSIONS ARE IN INCHES



THE PARTS MAY OR MAY NOT BE COATED WITH AN EPOXY CONTAINING ZINC POWDER OR ZINC COATING APPLIED VIA A THERMAL ZINC PROCESS. IF THERE IS A ZINC COATING, EFFECTIVE VENTILATION IS REQUIRED DURING GRINDING OR WELDING TO PREVENT THE BREATHING OF FUMES BY PERSONNEL.

CUSTOMER INSPECTION DWG.

REF.:
BOTTOM LEFT CORNER ON DWG D243000C SHEET 1.
BOTTOM RIGHT CORNER ON DWG D243000C, SHEET 2.
TOP RIGHT CORNER ON DWG D243000C, SHEET 3.

DESCRIPTION	ORDER NO.	MATERIAL	COUNTRY OF ORIGIN	WEIGHT	CONFORMS TO	DIMENSIONS	
						A	B
CORNER, TOP LEFT	243000C-TL	LOW CARBON CAST STEEL FOR WELDING	CHINA	25 LB	ISO 1161, ABS CERIFIED	7.01 $\begin{matrix} +.01 \\ -.03 \end{matrix}$	6.38 $\pm .02$

To avoid lifter failure, potential death and property damage, never exceed WLL (Working Load Limit).

This document contains the proprietary information of Tandemloc, Inc. and your access and use shall be, and is at all times, pursuant to and limited by the Tandemloc, Inc. Terms of Use.

You shall not, and shall not encourage, assist, or authorize another party to copy, distribute, publicly display, modify, reverse engineer, decompile, or take any other action to reproduce this document or the information contained herein. © Copyright 2014 by Tandemloc, Inc.

Dimensions are subject to manufacturing tolerance and change.



Email: info@tandemloc.com • www.tandemloc.com
 824 Highway 101 • Havelock, NC 28532
 Tel: 1.800.258.7324 (252.447.7155)
 FAX 1.800.892.3273 (252.447.5502)

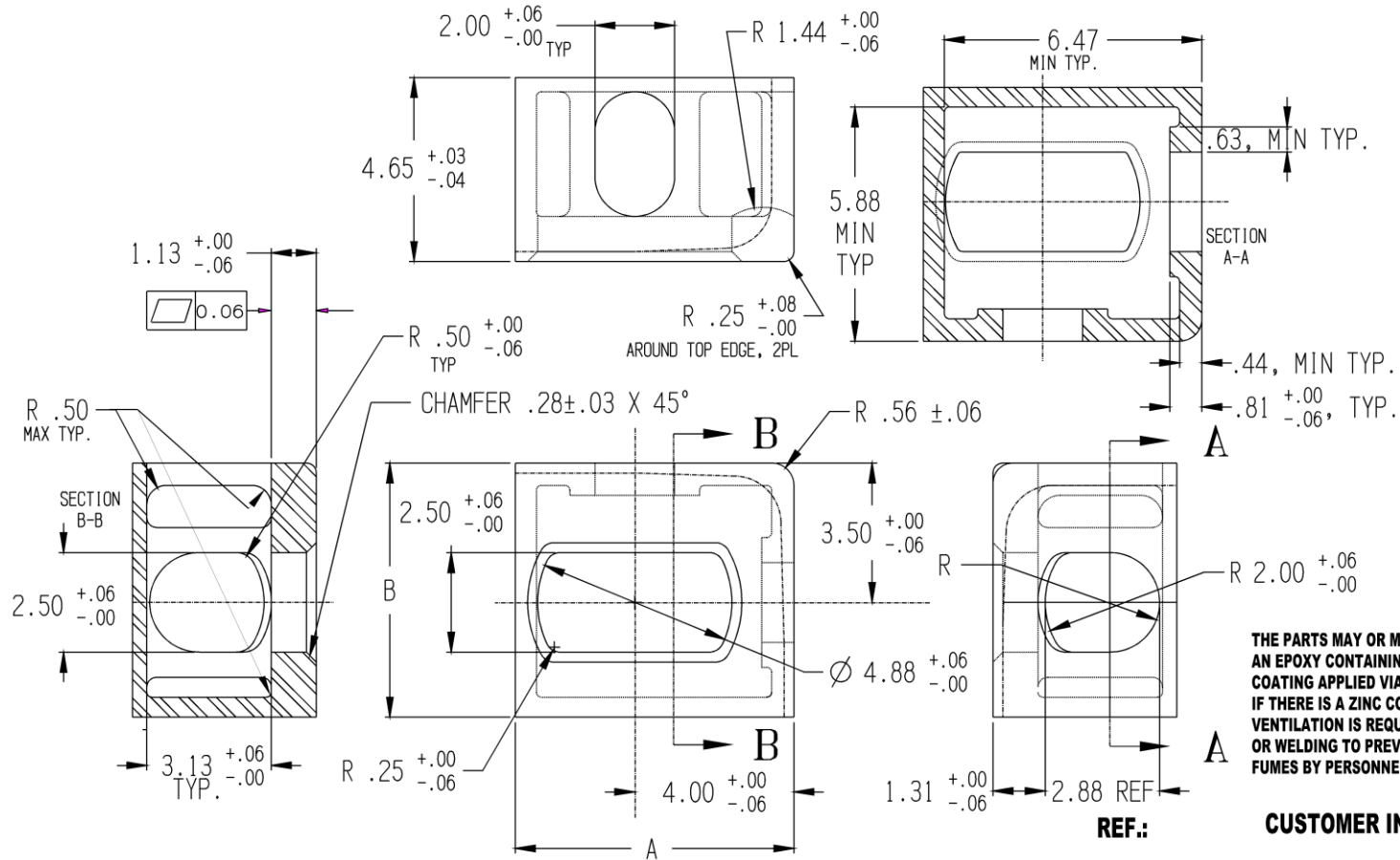
Tandemloc, Inc. designs, manufactures and tests lifting, securing and mobilizing components for all industries. See our website for details and important safety information.

Read all safety labels and instructions prior to use. Product to be used by qualified personnel only.

TOP RIGHT CORNER FITTING (243000C)

Cage Code: 65059 | Drawing No: D243000C | Revision: F | Sheet: 3 of 4

UNLESS OTHERWISE SPECIFIED, DIMENSIONS ARE IN INCHES



REF.: CUSTOMER INSPECTION DWG.

DESCRIPTION	ORDER NO.	MATERIAL	COUNTRY OF ORIGIN	WEIGHT	CONFORMS TO	DIMENSIONS	
						A	B
CORNER, TOP RIGHT	243000C-TR	LOW CARBON CAST STEEL FOR WELDING	CHINA	25 LB.	ISO 1161, ABS CERIFIED	7.01 (+.01/-0.03)	6.38 ± .02

BOTTOM LEFT CORNER ON DWG D243000C SHEET 1.
 BOTTOM RIGHT CORNER ON DWG D243000C, SHEET 2.
 TOP LEFT CORNER ON DWG D243000C, SHEET 4.

To avoid lifter failure, potential death and property damage, never exceed WLL (Working Load Limit).

This document contains the proprietary information of Tandemloc, Inc. and your access and use shall be, and is at all times, pursuant to and limited by the Tandemloc, Inc. Terms of Use.

You shall not, and shall not encourage, assist, or authorize another party to copy, distribute, publicly display, modify, reverse engineer, decompile, or take any other action to reproduce this document or the information contained herein. © Copyright 2014 by Tandemloc, Inc.

Dimensions are subject to manufacturing tolerance and change.



Email: info@tandemloc.com • www.tandemloc.com
 824 Highway 101 • Havelock, NC 28532
 Tel: 1.800.258.7324 (252.447.7155)
 FAX 1.800.892.3273 (252.447.5502)

Tandemloc, Inc. designs, manufactures and tests lifting, securing and mobilizing components for all industries. See our website for details and important safety information.

Read all safety labels and instructions prior to use. Product to be used by qualified personnel only.