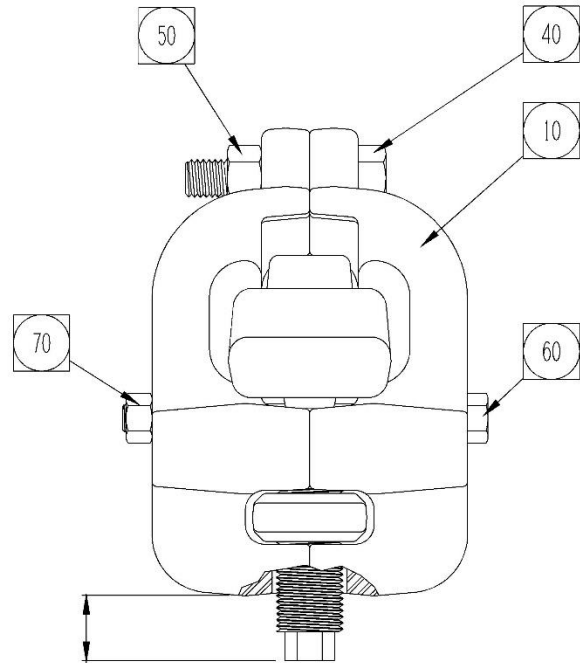


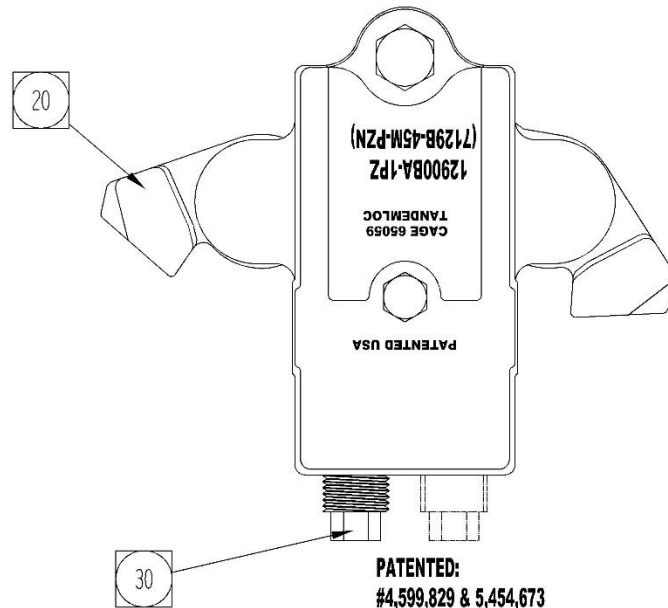
# TANDEMLOC CONNECTOR ASSEMBLY (12900BA)

Cage Code: 65059 | Drawing No: S12900BA | Revision: C | Sheet: 1 of 2

UNLESS OTHERWISE SPECIFIED, DIMENSIONS ARE IN INCHES



DO NOT FORCE DRIVE STUD BEYOND THIS 1.08" MAX.



PATENTED:  
#4,599,829 & 5,454,673  
REF; USMC CONTROL DRAWING 645008A0030

PC #	QUAN.	DESCRIPTION	PART#
10	2	CLAMP BODY HALF	12920BA-1PA
20	2	CLAMP ARM	12940BA-1PA
30	2	DRIVE STUD ASSEMBLY	12930BA-1PZ
40	1	BOLT, 1/2-13UNC X 2-1/4 LG GRADE 8, ZINC PLATED	WHB005013000225
50	1	LOCKNUT, 1/2-13UNC, NYLON INSERT	UPS005013000061
60	1	BOLT, 3/8-24UNF X 5 LG GRADE 8, ZINC PLATED	WHB003824000500
70	1	LOCKNUT, 3/8-24UNF, NYLON INSERT	UPS003824000047
80	1	GREASE, STA-FLEX PREMIUM RED	\$CCNSL3190

To avoid lifter failure, potential death and property damage, never exceed WLL (Working Load Limit).

This document contains the proprietary information of Tandemloc, Inc. and your access and use shall be, and is at all times, pursuant to and limited by the Tandemloc, Inc. Terms of Use.

You shall not, and shall not encourage, assist, or authorize another party to copy, distribute, publicly display, modify, reverse engineer, decompile, or take any other action to reproduce this document or the information contained herein. © Copyright 2014 by Tandemloc, Inc.

Dimensions are subject to manufacturing tolerance and change.



Email: [info@tandemloc.com](mailto:info@tandemloc.com) • [www.tandemloc.com](http://www.tandemloc.com)  
824 Highway 101 • Havelock, NC 28532  
Tel: 1.800.258.7324 (252.447.7155)  
FAX 1.800.892.3273 (252.447.5502)

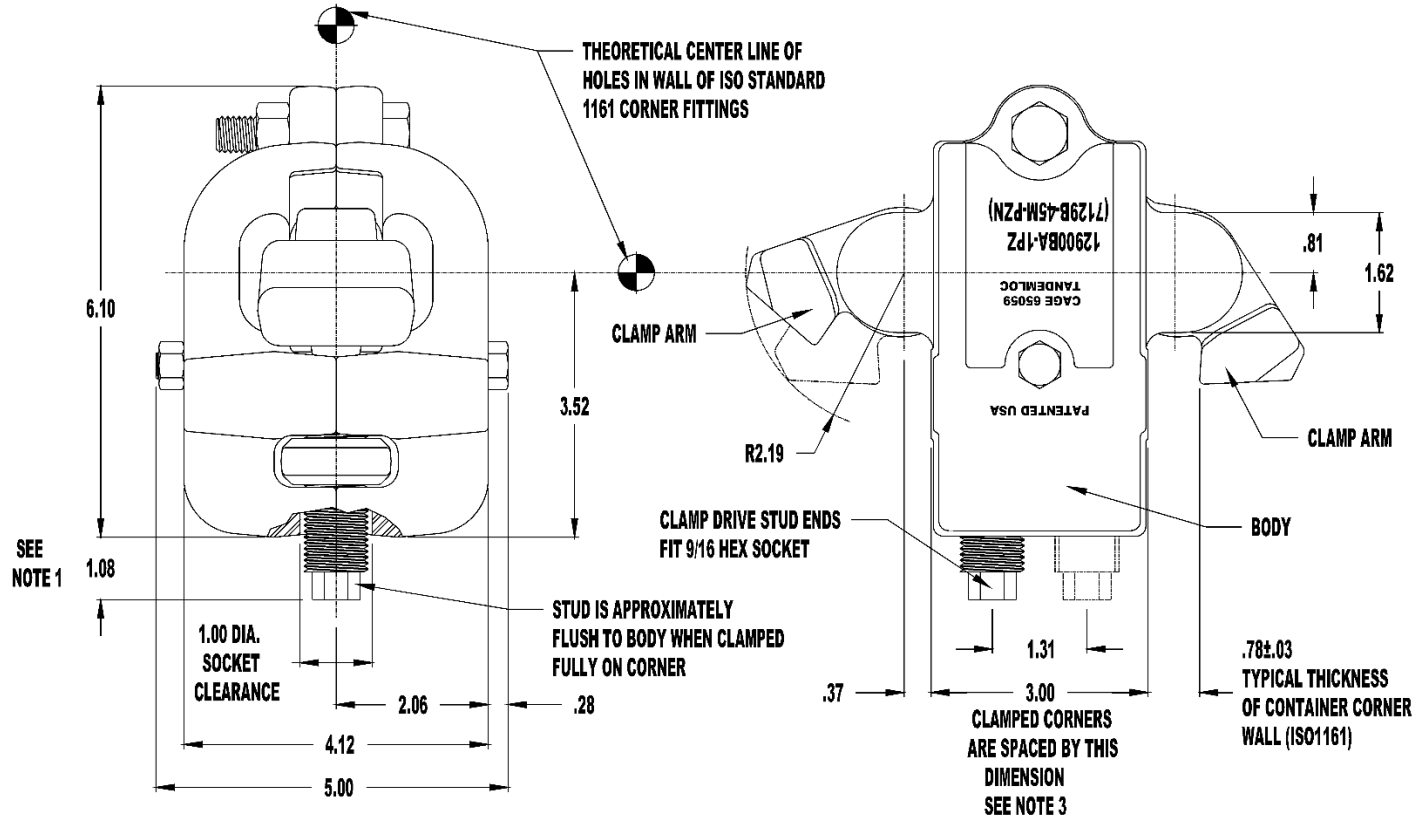
Tandemloc, Inc. designs, manufactures and tests lifting, securing and mobilizing components for all industries. See our website for details and important safety information.

Read all safety labels and instructions prior to use. Product to be used by qualified personnel only.

# TANDEMLOC CONNECTOR ASSEMBLY (12900BA)

Cage Code: 65059 | Drawing No: S12900BA | Revision: C | Sheet: 2 of 2

UNLESS OTHERWISE SPECIFIED, DIMENSIONS ARE IN INCHES



**NOTES:**

1. DO NOT FORCE DRIVE STUD ASSEMBLY BEYOND THE 1.08 DIMENSION SHOWN. IMPACT WRENCHES SHOULD NEVER BE USED TO BACKOUT THE DRIVE STUD
2. 3.00 CONTAINER SPACING IS SUBJECT TO +.00/-0.06 TOLERANCE ALL OTHER DIMENSIONS ARE SUBJECT TO MANUFACTURING TOLERANCE
3. ULTIMATE STRENGTH IN VERTICAL SHEAR: 24,000 LB. FOR ONE CONNECTOR  
ULTIMATE STRENGTH IN TENSION ON CLAMP ARMS: 54,000 LB.
4. WEIGHT: 17.1 LB.

To avoid lifter failure, potential death and property damage, never exceed WLL (Working Load Limit).

This document contains the proprietary information of Tandemloc, Inc. and your access and use shall be, and is at all times, pursuant to and limited by the Tandemloc, Inc. Terms of Use.

You shall not, and shall not encourage, assist, or authorize another party to copy, distribute, publicly display, modify, reverse engineer, decompile, or take any other action to reproduce this document or the information contained herein. © Copyright 2014 by Tandemloc, Inc.

Dimensions are subject to manufacturing tolerance and change.



Email: [info@tandemloc.com](mailto:info@tandemloc.com) • [www.tandemloc.com](http://www.tandemloc.com)

824 Highway 101 • Havelock, NC 28532

Tel: 1.800.258.7324 (252.447.7155)

FAX 1.800.892.3273 (252.447.5502)

Tandemloc, Inc. designs, manufactures and tests lifting, securing and mobilizing components for all industries. See our website for details and important safety information.

Read all safety labels and instructions prior to use. Product to be used by qualified personnel only.