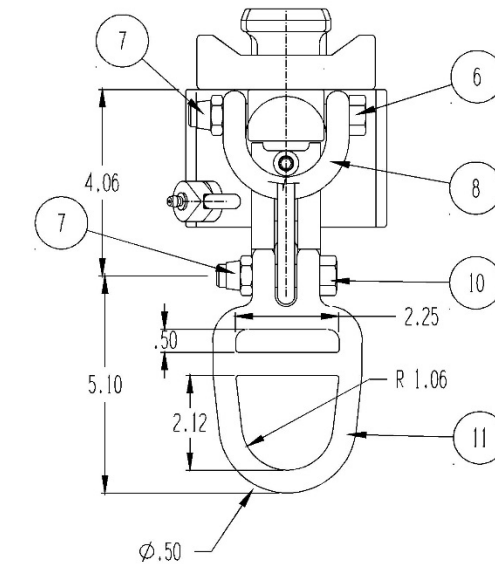
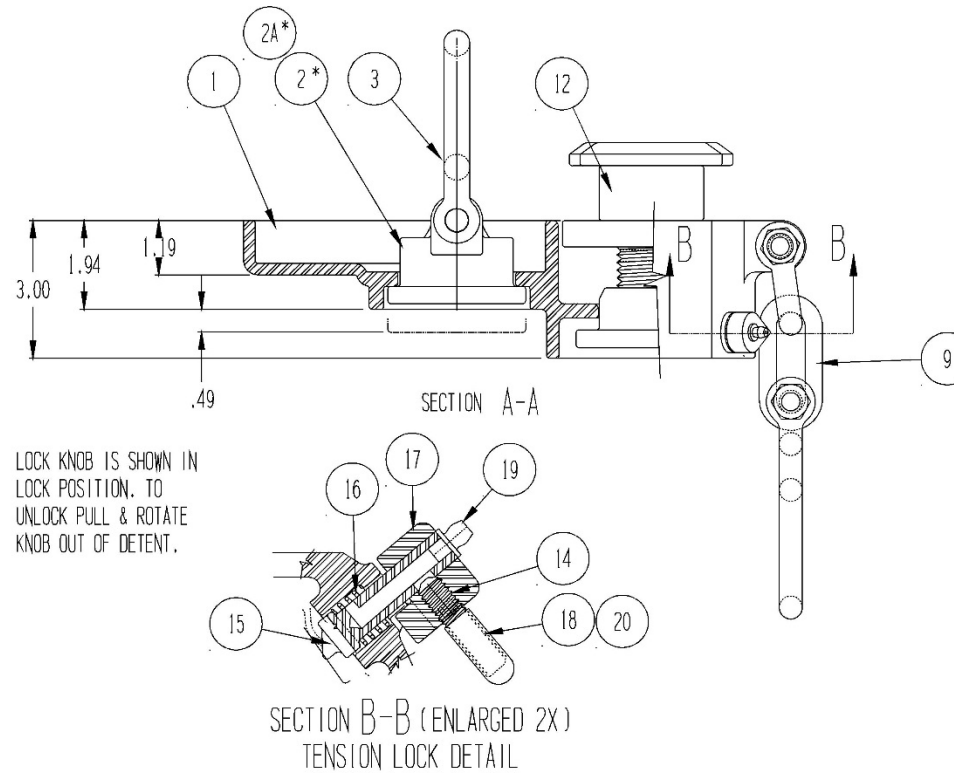
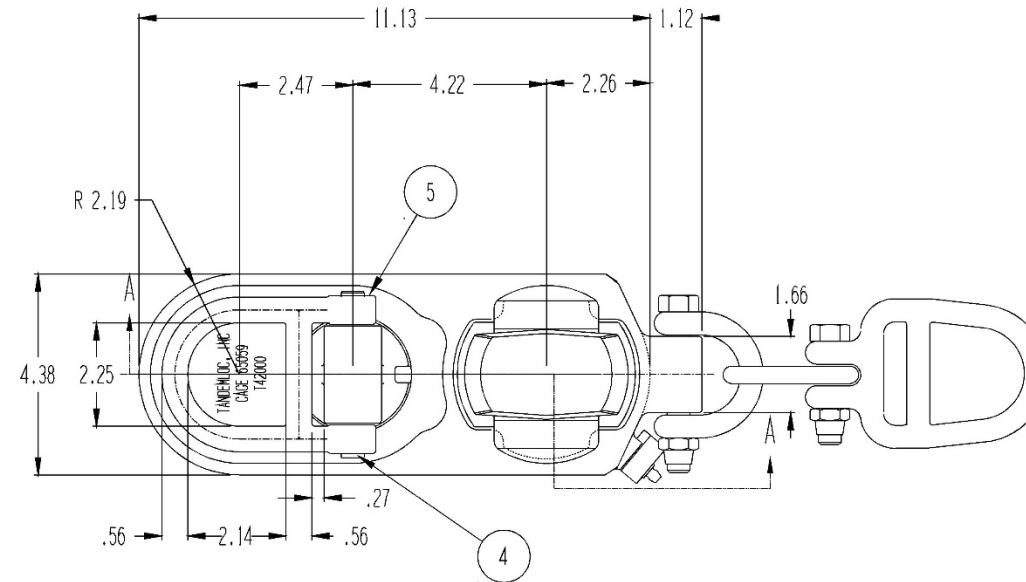


VERY SHALLOW COMBO TWISTLOC & TIEDOWN SET (T42000C)

Cage Code: 65059 | Drawing No: T42000C | Revision: J
UNLESS OTHERWISE SPECIFIED. DIMENSIONS ARE IN INCHES

2A	1*	S33002A-2GB SWIVEL HALVES SET GALV. BLACK T-CT.	.007 LB.
20	1	\$MON281.75IL9500B BLACK VINYL CAP .281 ID X .75 LG.	.007 LB.
19	1	\$LBEGHD1028 GREASE FITTING, 3/16 DR, ZINC PLATED	.007 LB.-
18	1	DSH003118000100 SET SCR CUP PT.G8 STL DACRO/BLK CTD	.023 LB.-
17	1	T42095B-1D0 LOCK KNOB, DACROMET W/BLACK T-CT	.054 LB.-
16	1	\$LEELC046GH-1SS PAWL SPRING, CRES	.004 LB.-
15	1	T42097B-1D0 LOCK PAWL, DACROMET W/ BLACK T-CT	.10 LB.-
14	.001oz	\$LON271 PERMANENT THREAD LOCK SOLUTION	.001 OZ.-
13	-	T42080C-1GA SPANNER AND SOCKET WRENCH	.94 LB.
12	1	T42001B-2GA INTERNAL ASSEMBLY, GALVANIZED	6.00 LB.
11	1	T12125C-1GB TIEDOWN RING OUTER, GALV./BLACK T-CT	1.42 LB.
10	1	DHB005013000225 HEX BOLT GR 8 STL, DACROMET BLACK	0.15 LB.
9	1	T12175C-1GB MID LINK, STL, GALV./BLACK T-CT	0.227 LB.
8	1	T12150C-1GB CLEVIS LINK, STL, GALV./BLACK T-CT	0.400 LB.
7	2	BLS005013000044 2 WAY LKNUT,STL DACROMET/BLK T- CTD	0.086 LB.
6	1	DHB005013000350 HEX BOLT GR 8 STL DACROMET/BLACK	0.225 LB.
5	1	SCP0005XXXX0075 COTTER PIN CRES FOR.062 HOLE X.75 LG.	.007 LB.
4	1	S33004A-3DL CLEV. PIN, DACROMET /BLACK T-CT	.204 LB.
3	1	S33003A-1GB TIEDOWN CLEVIS, GALV. /BLACK T-CT	1.13 LB.
2	1*	S33002A-MGB SWIVEL RETAINER, GALV./BLACK TOP-CT	1.63 LB.
1	1	T42070B-1GW COMBO SHALLOW BODY, CAST, GALV. GROUND	8.5 LB.
PC NO.	QUAN.	DESCRIPTION	UNIT WEIGHT
	*SEE ORDER NO. NOTE	LIST OF MATERIALS- ONE ASSEMBLY	TOTAL WGT : 20.38 LB.



*ORDER NO. NOTE:

ORDER NOS (FINISH PER L/M UNLESS NOTED OTHERWISE):
T42000C-K2GD UNASSEMBLED KIT W/ SOLID SWIVEL
T42000C-K3GD UNASSEMBLED KIT W/ SPLIT SWIVEL

T42080C-1GA WRENCH ONLY, PC 13

KITS ARE SHIPPED UNASSEMBLED EXCEPT PC#1 WHICH IS PARTIALLY ASSEMBLED PER DWG. ST42001B.

NO GREASE IS USED TO ALLOW FOR FUTURE PAINT.

To avoid lifter failure, potential death and property damage, never exceed WLL (Working Load Limit)

This document contains the proprietary information of Tandemloc, Inc. and your access and use shall be, and is at all times, pursuant to and limited by the Tandemloc, Inc. Terms of Use.

You shall not, and shall not encourage, assist, or authorize another party to copy, distribute, publically display, modify reverse engineer, decompile, or take any other action to reproduce this document or the information contained herein.

© Copyright 2014 by Tandemloc, Inc.

Dimensions are subject to manufacturing tolerance and change.



Email: info@tandemloc.com • www.tandemloc.com

824 Highway 101 • Havelock, NC 28532

Tel: 1.800.258.7324 (252.447.7155)

FAX 1.800.892.3273 (252.447.5502)

Tandemloc, Inc. designs, manufactures and tests lifting, securing and mobilizing components for all industries. See our website for details and important safety information.

Read all safety labels and instructions prior to use. Product to be used by qualified personnel only.