

# T12200A TYPE LINKED TIEDOWN ASSEMBLY & KITS (T12200A)

Cage Code: 65059 | Drawing No: ST12000D | Revision: H | Sheet: 1 of 1

UNLESS OTHERWISE SPECIFIED, DIMENSIONS ARE IN INCHES

**ORDER NOs:**

ASSEMBLIES OF PCS# 1 THRU 8 & QUANTITIES AS NOTED IN L/M (WEIGHT 3.10 LB.):

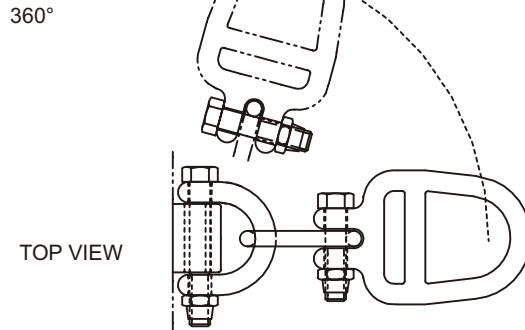
T12200A-1GB LINKED TIEDOWN ASSEMBLY (FINISH AS DESIGNATED IN LIST OF MATERIALS.)

T12200A-100 LINKED TIEDOWN ASSEMBLY (FINISH - "SELF COLORED".)

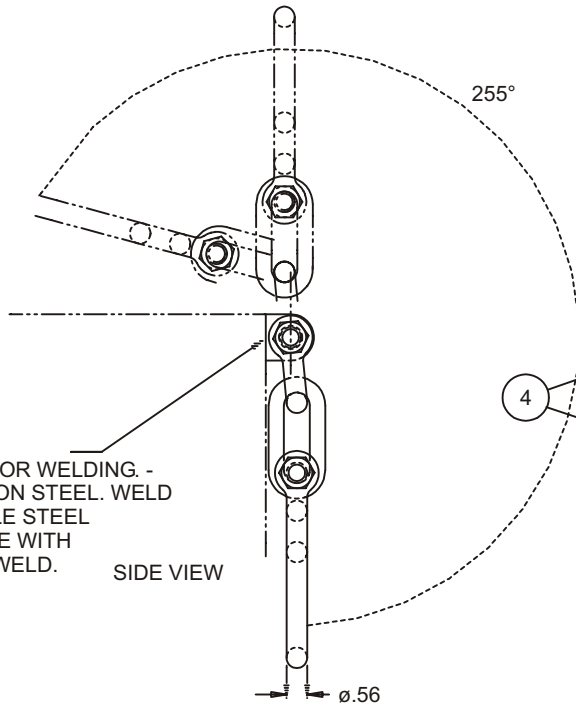
KIT (UN-ASSEMBLED COMPONENTS, COMPLETE SET) 3.10 LB.

T12200A-KGB LINKED TIEDOWN KIT (FINISH & QUAN. AS DESIGNATED IN LIST OF MATERIALS.)

T12200A-K00 LINKED TIEDOWN KIT (FINISH - "SELF COLORED".)



TOP VIEW



SIDE VIEW

BRACKET FOR WELDING. -  
LOW CARBON STEEL. WELD  
TO SUITABLE STEEL  
STRUCTURE WITH  
.31 FILLET WELD.



END VIEW

**LIST OF MATERIALS**

PC. #	dash # for self-colored -100 & -K00 assem & kit	QUAN. -100 & -K00	QUAN. -3GB	PART NO. AND DESCRIPTION	UNIT WGT.
1		1		@RIN106110-W BRACKET, CAST, GALV & MACH. FOR WELDING	0.490 LB.
2		1	1	T12125C-1GB TIEDOWN RING -OUTER, GALV./BLACK T-CT	1.420 LB.
3		1	1	DHB005013000350 HEX BOLT GR 8 STL DACROMET BLACK	0.225 LB.
4		2	2	BLS005013000044 2 WAY LKNUT, STL DACROMET/BLK T-CT	0.086 LB.
5		1	1	T12150C-1GB CLEV. LINK, ALLOY STL, GALV./BLACK T-CT	0.400 LB.
6		1	1	T12175C-1GB MID LINK, ALLOY STL, GALV./BLACK T-CT	0.227 LB.
7		1	1	DHB005013000225 HEX BOLT GR 8 STL, DACROMET-BLACK	0.150 LB.

NOTE:  
TIEDOWN PROVISION PER MIL STD 209K. STRENGTH RATING  
10,000 LB. MIN. ULTIMATE STRENGTH IS 15,000 LB.

REF. SALES DWG. ST12200A

REV	DESCRIPTION	REVISIONS	DATE	APP
A	ALL COMPONENTS WERE GALV OR ZN PLATE BLACK T-CT ADDED		4/05/01	MD
B	ADDED SELF COLORED PART NOS		10/20/03	MD
C	ADDED SELF COLORED DATA TO L/M		10/28/03	MD
D	0.56 WAS 0.50 2 PLACES		8/25/08	WT
E	ADDED -3GB		8/1/12	DAH
F	209K WAS 209J		12/6/21	DAH
G	ADDED 1.66 DIMENSIONS		4/5/13	DAH
H	REMOVED -3GB		9/15/14	DAH

To avoid lifter failure, potential death and property damage, never exceed WLL (Working Load Limit)

This document contains the proprietary information of Tandemloc, Inc. and your access and use shall be, and is at all times, pursuant to and limited by the Tandemloc, Inc. Terms of Use.

You shall not, and shall not encourage, assist, or authorize another party to copy, distribute, publically display, modify, reverse engineer, decompile, or take any other action to reproduce or replicate this document or the information contained herein. © Copyright 2012 by Tandemloc, Inc.

Dimensions are subject to manufacturing tolerance and change.



Email: [info@tandemloc.com](mailto:info@tandemloc.com) • [www.tandemloc.com](http://www.tandemloc.com)

824 Highway 101 • Havelock, NC 28532

TEL: 1.800.258.7324 (252.447.7155)

FAX: 1.800.892.3273 (252.447.5502)

Tandemloc designs, manufactures and tests lifting, securing and mobilizing components for all industries. See our website for details and important safety information.

Read all safety labels and instructions prior to use. Product to be used by qualified personnel only.