

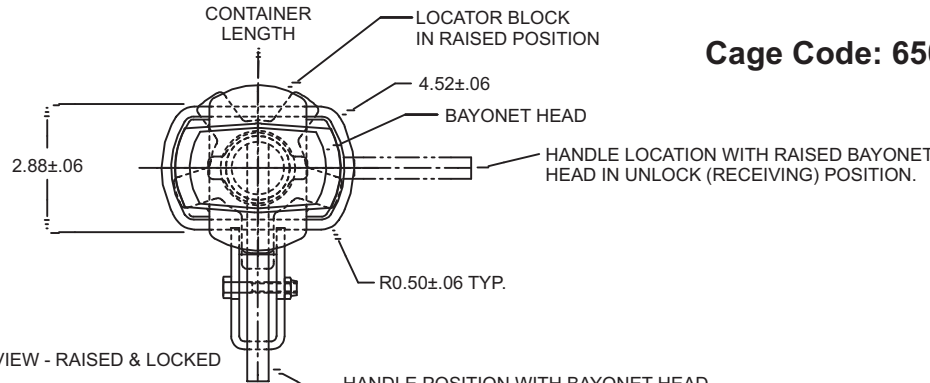
TIEDOWN (T12000E)

Cage Code: 65059 | Drawing No: ST12000E | Revision: D | Sheet: 1 of 1

UNLESS OTHERWISE SPECIFIED, DIMENSIONS ARE IN INCHES

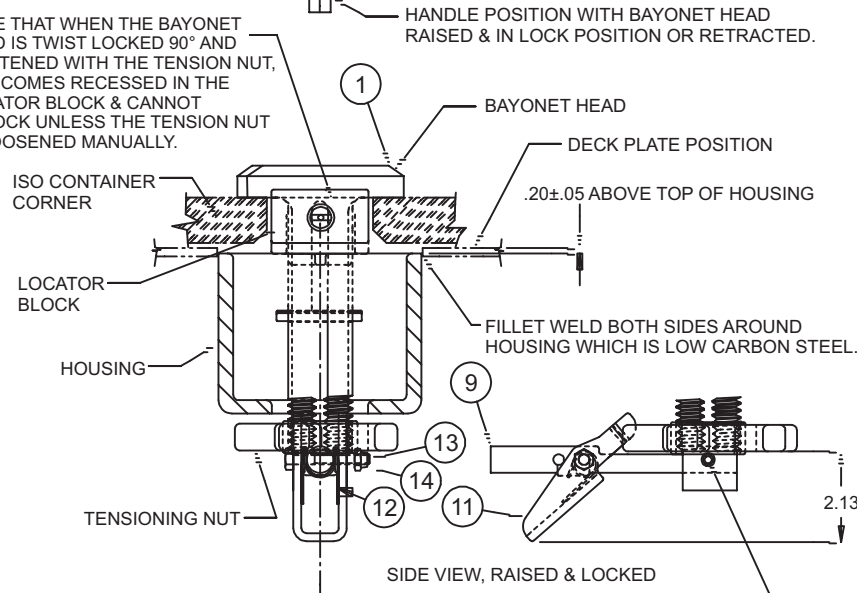
LIST OF MATERIALS - ONE ASSEMBLY

18	1	80607AA-T00 HOUSING, TRAILOC, STEEL, SELF COLORED	3.50
15	.012 ML.	\$LON271 LOCTITE 271 PERM. THREAD LOCK	NIL
14	1	SPS002520000031 LOCKNUT, 1/4"-20UNC, STAINLESS	.001
13	1	SHB002520000475 BOLT, HEX HEAD, 1/4"-20 UNC	.019
12	1	T12097A-2SS SPRING, STAINLESS STEEL	.004
11	1	T12098A-1GA LOCK, LEVER, HOT DIP GALVANIZED	.280
10	1	SS1003118000038 SCREW, SET, CONE PT, STAINLESS STL	.003
9	1	T12096A-1GAL LANYARD, HANDLE, H.D. GALV. W/	.440
8	1	T12099A-1GA NUT, BAR, 5, SPINNER, GALVANIZED	.900
7	1	SRP0025XXXX0200 PIN, SPRING, 1/4 X 2, STAINLESS	.020
6	1	T12094A-2GA-R RIGHT LOC BLK W/STOP SCREW DN	1.720
5	1	T12093A-1GA-L BLOCK, PUSH, LEFT HAND	1.730
4	1	\$WIE-BALL50CRES 1/2" BALL, STAINLESS STEEL	.017
3	1	\$LEELC-063G-2SS COIL SPRING, STAINLESS STEEL	.008
2	1	806150B-12N RETAINER SCREW/FLUSH GREASE FIT. ASSEM.	.017
1	1	T12095A-1GA BAYONET, MACHINED, GALVANIZED	3.70 LB.
PC. NO.	-1G0/-100	-1GA=GALVANIZED, -100=SELF COLORED DESCRIPTION	UNIT WEIGHT
	QUAN.	LIST OF MATERIALS - ONE ASSEMBLY	

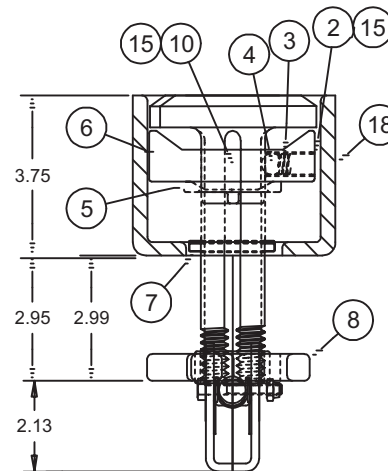


TOP VIEW - RAISED & LOCKED

NOTE THAT WHEN THE BAYONET HEAD IS TWIST LOCKED 90° AND TIGHTENED WITH THE TENSION NUT, IT BECOMES RECESSED IN THE LOCATOR BLOCK & CANNOT UNLOCK UNLESS THE TENSION NUT IS LOOSENED MANUALLY.



SIDE VIEW, RAISED & LOCKED



SIDE VIEW, RETRACTED

STRENGTH DATA: UPWARD RESTRAINT - 44,000 LB. ULT.
TRANSVERSE SHEAR - 30,000 LB.*
*(SHEAR RATING CAN BE INCREASED IF REQUESTED.)

ORDER NO:
T12000E-1G0 TWISTLOCK, GALV., UNIVERSAL LOCK-SCREW DOWN
INTERN. ASSEM. WITH LEVER LOCK THREAD HANDLE &
80607AA-T00 HOUSING.

SELF COLORED ASSEMBLIES ARE ORDERED BY CHANGING -1G0 TO -100
WEIGHT 12.89 LB.

INSTALLER TO SET
SCREW WITH LOCTITE
THREAD LOCK TO PREVENT
LOOSENING.

15

REV	DESCRIPTION	REVISIONS	DATE	APPROVED
A	ADDED STRENGTH DATA, LOCTITE 271 WAS LOCTITE 262		9/8/09	DAH
B	.20±.05 WAS .150 MAX		7/29/10	DAH
C	ADDED SHEET 2 WITH SHORTENED HOUSING, PUSH BLOCK AND BAYONET		12/22/10	DAH
D	REMOVED -2G0 WITH SAFETY PIN		7/25/13	DAH

To avoid lifter failure, potential death and property damage, never exceed WLL (Working Load Limit)

This document contains the proprietary information of Tandemloc, Inc. and your access and use shall be, and is at all times, pursuant to and limited by the Tandemloc, Inc. Terms of Use.

You shall not, and shall not encourage, assist, or authorize another party to copy, distribute, publically display, modify, reverse engineer, decompile, or take any other action to reproduce or replicate this document or the information contained herein. © Copyright 2012 by Tandemloc, Inc.

Dimensions are subject to manufacturing tolerance and change.



Email: info@tandemloc.com • www.tandemloc.com
824 Highway 101 • Havelock, NC 28532
TEL: 1.800.258.7324 (252.447.7155)
FAX: 1.800.892.3273 (252.447.5502)

Tandemloc designs, manufactures and tests lifting, securing and mobilizing components for all industries. See our website for details and important safety information.
Read all safety labels and instructions prior to use. Product to be used by qualified personnel only.