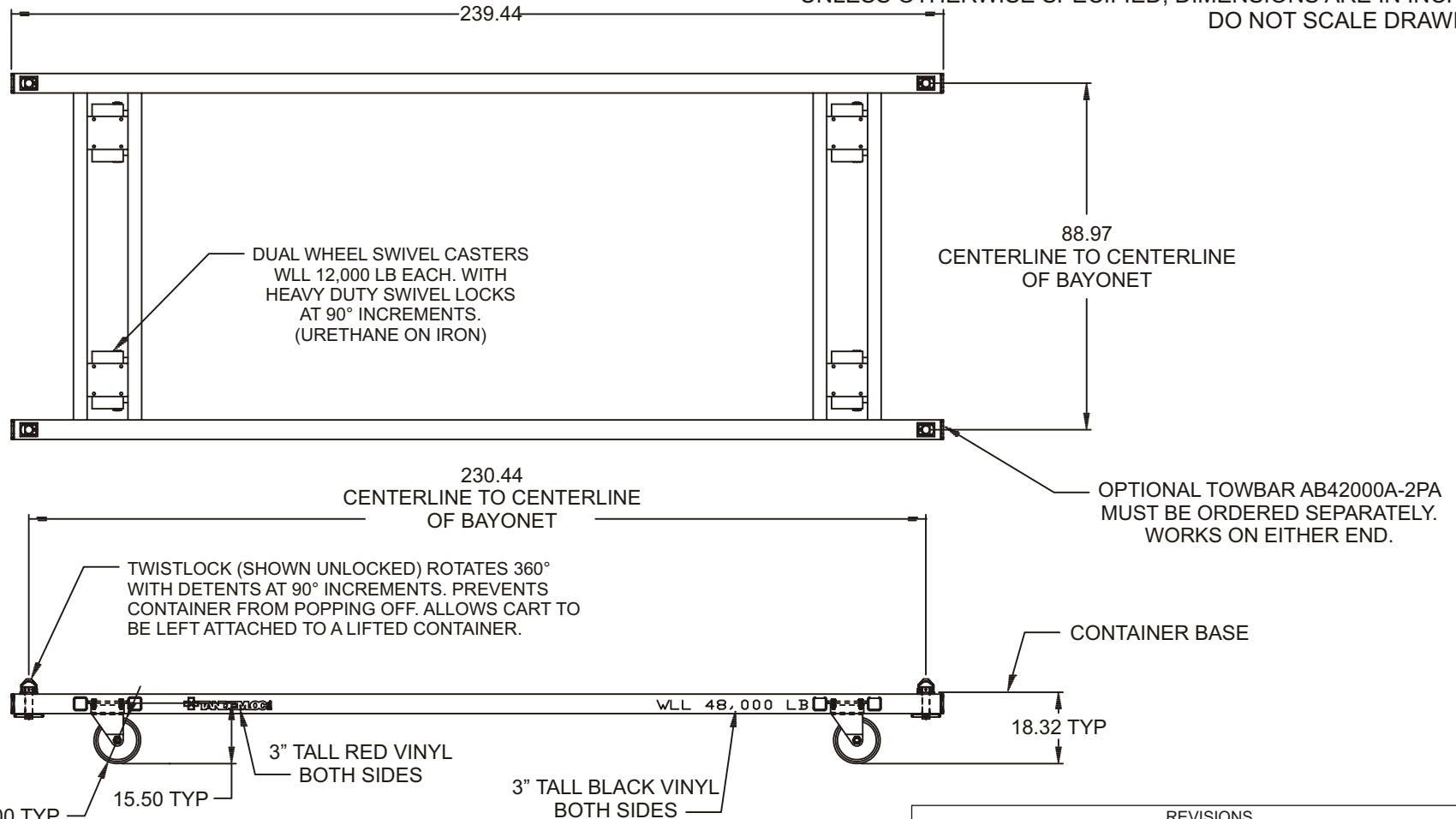


# T10000E-1PA CONTAINER CART FOR 20' ISO STD CONTAINERS (T10000E-1PA)

Cage Code: 65059 | Drawing No: ST10000E-1PA | Revision: D | Sheet: 1 of 1

UNLESS OTHERWISE SPECIFIED, DIMENSIONS ARE IN INCHES  
DO NOT SCALE DRAWING



NOTE:  $\varnothing$  12.00 TYP

1. P/N: T10000E-1PA CONTAINER CART FOR 20 FT ISO CONTAINER
2. WLL: 48,000 LB.
3. FINISH: SANDBLAST, PRIME AND PAINT SAFETY YELLOW
4. CALCULATED WEIGHT -1PA = 1,975 LB.
5. CAPACITY BASED ON 3 MPH MAX SPEED ON SMOOTH SURFACES.

To avoid lifter failure, potential death and property damage, never exceed WLL (Working Load Limit)

This document contains the proprietary information of Tandemloc, Inc. and your access and use shall be, and is at all times, pursuant to and limited by the Tandemloc, Inc. Terms of Use.

You shall not, and shall not encourage, assist, or authorize another party to copy, distribute, publically display, modify, reverse engineer, decompile, or take any other action to reproduce or replicate this document or the information contained herein. © Copyright 2012 by Tandemloc, Inc.

Dimensions are subject to manufacturing tolerance and change.

REVISIONS		DATE	APPROVED
REV	DESCRIPTION		
A	REVISED WHEEL LOCATION, CAPACITY WAS 40,000 LB.	01/07/05	MRD
B	REVISED WHEEL LOCATION	01/10/05	MRD
C	REMOVED TOWBAR, IT IS NOW OPTIONAL	01/13/05	MRD
D	WLL WAS 45,000 LB.	08/01/07	WT



Email: [info@tandemloc.com](mailto:info@tandemloc.com) • [www.tandemloc.com](http://www.tandemloc.com)  
824 Highway 101 • Havelock, NC 28532  
TEL: 1.800.258.7324 (252.447.7155)  
FAX: 1.800.892.3273 (252.447.5502)

Tandemloc designs, manufactures and tests lifting, securing and mobilizing components for all industries. See our website for details and important safety information.  
Read all safety labels and instructions prior to use. Product to be used by qualified personnel only.