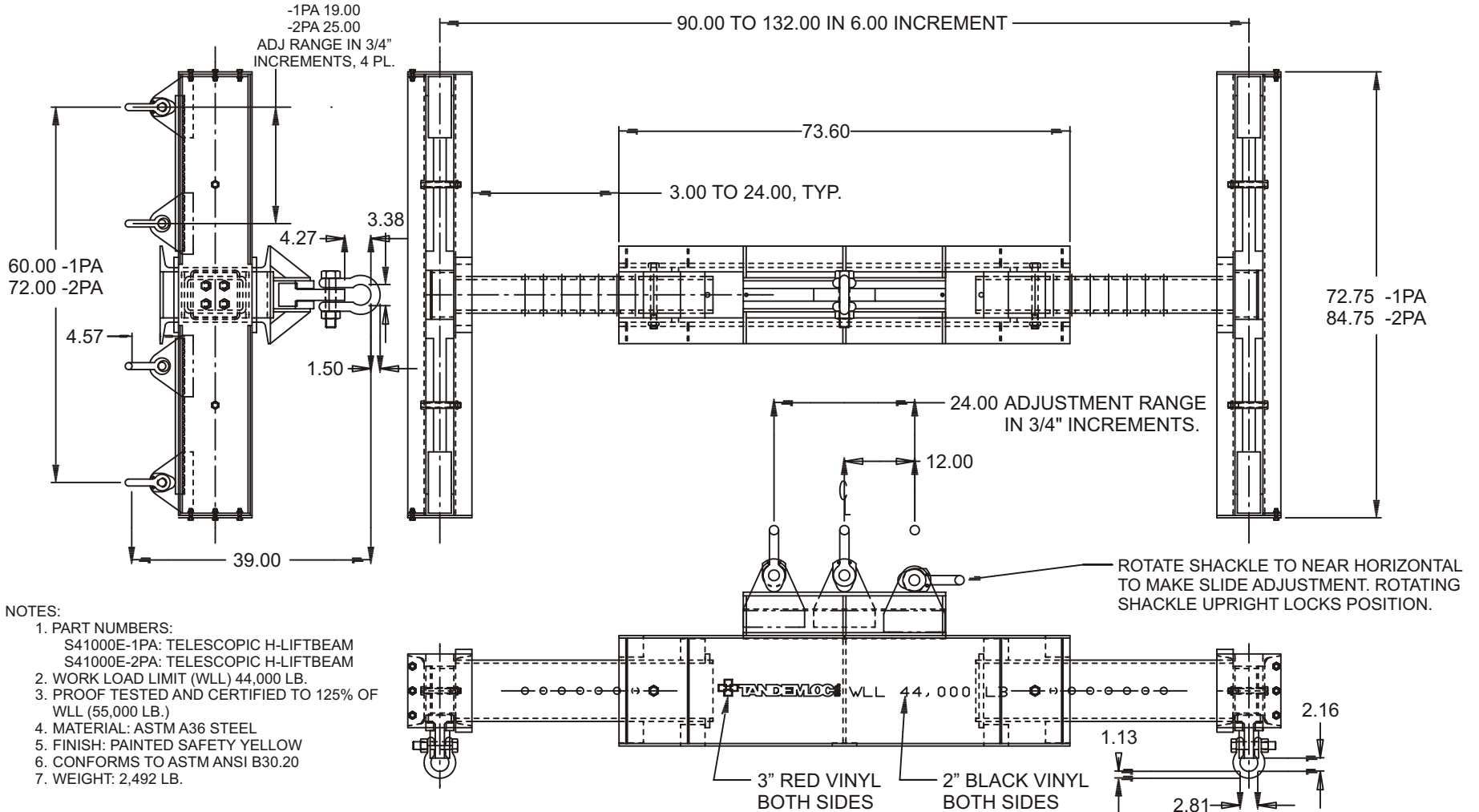


ADJUSTABLE SLIDING LIFTBEAM, WLL: 22T (S41000E-1PA)

Cage Code: 65059 | Drawing No: SS41000E | Revision: D | Sheet: 1 of 1

UNLESS OTHERWISE SPECIFIED, DIMENSIONS ARE IN INCHES
DO NOT SCALE DRAWING

REV	DESCRIPTION	REVISIONS	DATE	APPROVED
A	SPACERS, BOLTS & SHACKLE CAMS ADDED		9/07/01	MD
B	ADDED SIX GUSSETS. WEIGHT WAS 2480 LB.		10/16/01	MD
C	ADDED -2PA, WLL 44,000 LB., WAS 40,000 LB.		5/30/06	BT
D	TITLE WLL 44,000 LB., WAS 22T		3/20/07	ML



NOTES:

- PART NUMBERS:
S41000E-1PA: TELESCOPIC H-LIFTBEAM
S41000E-2PA: TELESCOPIC H-LIFTBEAM
- WORK LOAD LIMIT (WLL) 44,000 LB.
- PROOF TESTED AND CERTIFIED TO 125% OF WLL (55,000 LB.)
- MATERIAL: ASTM A36 STEEL
- FINISH: PAINTED SAFETY YELLOW
- CONFORMS TO ASTM ANSI B30.20
- WEIGHT: 2,492 LB.

To avoid lifter failure, potential death and property damage, never exceed WLL (Working Load Limit)

This document contains the proprietary information of Tandemloc, Inc. and your access and use shall be, and is at all times, pursuant to and limited by the Tandemloc, Inc. Terms of Use.

You shall not, and shall not encourage, assist, or authorize another party to copy, distribute, publically display, modify, reverse engineer, decompile, or take any other action to reproduce or replicate this document or the information contained herein. © Copyright 2012 by Tandemloc, Inc.

Dimensions are subject to manufacturing tolerance and change.



Email: info@tandemloc.com • www.tandemloc.com
824 Highway 101 • Havelock, NC 28532
TEL: 1.800.258.7324 (252.447.7155)
FAX: 1.800.892.3273 (252.447.5502)

Tandemloc designs, manufactures and tests lifting, securing and mobilizing components for all industries. See our website for details and important safety information.
Read all safety labels and instructions prior to use. Product to be used by qualified personnel only.