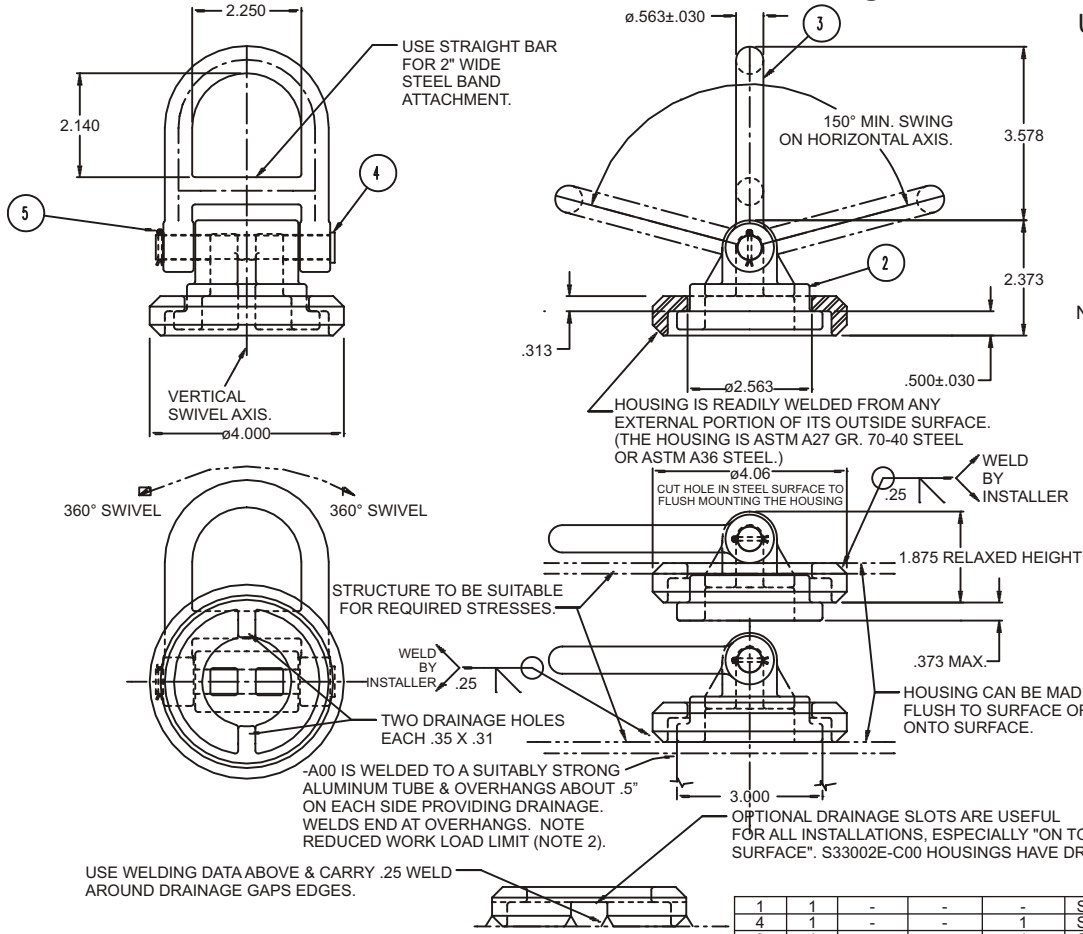


RAISED SWIVEL TIEDOWN (S33000E TYPE)

Cage Code: 65059 | Drawing No: SS33000E | Revision: F | Sheet: 1 of 1

UNLESS OTHERWISE SPECIFIED, DIMENSIONS ARE IN INCHES
DO NOT SCALE DRAWING

REV	DESCRIPTION	REVISIONS	DATE	APPROVED
A	ADDED DRAINAGE SLOT, WELDING & INSTALLER DATA		01/06/05	MD
B	ADDED -C00 TO PC1 IN L/M & -100W, -C00W & -C01W TO L/M QUAN COLUMN. ADDED WELDING DATA FOR -C00 GAP HOUSING		01/11/05	MD
C	ADDED ALL DATA PERTAINING TO S33000E-A00		10/20/05	MD
D	5,500 LB. IN NOTE 2 WAS 5,000 LB. ADDED "OVERHANG PROVIDES DRAINAGE" TO WELD NOTE FOR -A00		10/26/05	MD
E	DACROKOTE WAS DIMETCOAT ON -00A		11/2/05	MRD
F	ADDED "KIT" IN PART NO. DESCRIPTION		8/5/14	DAH



NOTES:

- PART NO:
S33000E-100 TIEDOWN ASSEMBLY, SELF COL.
S33000E-C00 TIEDOWN KIT, 1 SET OF LOOSE COMPONENTS ALL SELF COLORED. (NOTE 4 APPLIES)
S33000E-C01 TIEDOWN KIT, 1 SET OF LOOSE COMPONENTS W/ SELF-COLORED HOUSING & GALV/DACROKOTE COMPONENTS. (NOTE 4 APPLIES)
S33000E-A00 TIEDOWN ASSEMBLY WITH ALUMINUM (6061-T6) HOUSING & BLACK DACROKOTE STEEL COMPONENTS
WEIGHT -A00 3.33 LB., OTHERS- 4.00 LB., "W" PARTS 3.9 LB.
FOR OPTIONAL DRAINAGE HOUSING #S33002E-C00, ADD SUFFIX "W" TO END OF PART NO. EXAMPLE S33000E-100 BECOMES S33000E-100W.
- LOAD CAPACITY - 10,000 LB. EXCEPT -A00, WHICH IS 5,500 LB. (SINGLE TENSION) SAFETY FACTOR TO ULTIMATE STRENGTH IS 1.5 MIN.
- TIEDOWN CONFORMS TO MIL STD 209.
- P/N S33000E-C00, -C01 & A00:
FOR EASE OF INSTALLATION, COMPONENTS ARE SHIPPED UNASSEMBLED. (S33000E-100 IS SHIPPED ASSEMBLED.)
- THIS TIEDOWN ROTATES 360° ABOUT ITS VERTICAL AXIS AND A MIN OF 150° ABOUT ITS HORIZONTAL AXIS. IT IS DESIGNED TO SWIVEL & SWING TO THE TENSION LOAD PLANE OF THE TIEDOWN WITHIN THOSE ANGLES.
- ASSEMBLY: AFTER INSTALLING THE HOUSING (PC1), ASSEMBLE PC 2 THROUGH 5 INTO THE CONFIGURATION SHOWN ABOVE. (NOTE: TO INSERT PIN (PC 4), ROTATE PC 2 FOR PROPER CLEARANCE).

LIST OF MATERIALS

1	1	-	-	-	S33001E-A00 SWIVEL HOUSING, 6061-T6 ALUMINUM
4	1	-	-	1	S33004A-3DL HINGE PIN, STEEL DACROMET/DACROKOTE BLACK
3	1	-	-	1	S33003A-1GB TIEDOWN CLEVIS, GALV/BLACK DACROKOTE
2	1	-	-	1	S33002A-MGB SWIVEL RETAINER, GALV/BLACK DACROKOTE
5	1	1	1	1	SCP0005XXXX0075 COTTER PIN, STAINLESS STEEL
4	-	1	1	-	S33004A-300 HINGE PIN, STEEL SELF COLORED
3	-	1	1	-	S33003A-100 TIEDOWN CLEVIS, SELF COLORED
2	-	1	1	-	S33002A-100 SWIVEL RETAINER, SELF COLORED
1	-	1	1	1	S33001E-100 SWIVEL HOUSING, SELF COLORED FOR ASSEMBLIES W/O SUFFIX "W". SEE NOTE 1
PC.#	QUAN -A00	QUAN -100,100W	QUAN -C00,C00W	QUAN -C01, C01W	PART NO. AND DESCRIPTION

To avoid lifter failure, potential death and property damage, never exceed WLL (Working Load Limit)

This document contains the proprietary information of Tandemloc, Inc. and your access and use shall be, and is at all times, pursuant to and limited by the Tandemloc, Inc. Terms of Use.

You shall not, and shall not encourage, assist, or authorize another party to copy, distribute, publically display, modify, reverse engineer, decompile, or take any other action to reproduce or replicate this document or the information contained herein. © Copyright 2012 by Tandemloc, Inc.

Dimensions are subject to manufacturing tolerance and change.



Email: info@tandemloc.com • www.tandemloc.com
824 Highway 101 • Havelock, NC 28532
TEL: 1.800.258.7324 (252.447.7155)
FAX: 1.800.892.3273 (252.447.5502)

Tandemloc designs, manufactures and tests lifting, securing and mobilizing components for all industries. See our website for details and important safety information.

Read all safety labels and instructions prior to use. Product to be used by qualified personnel only.