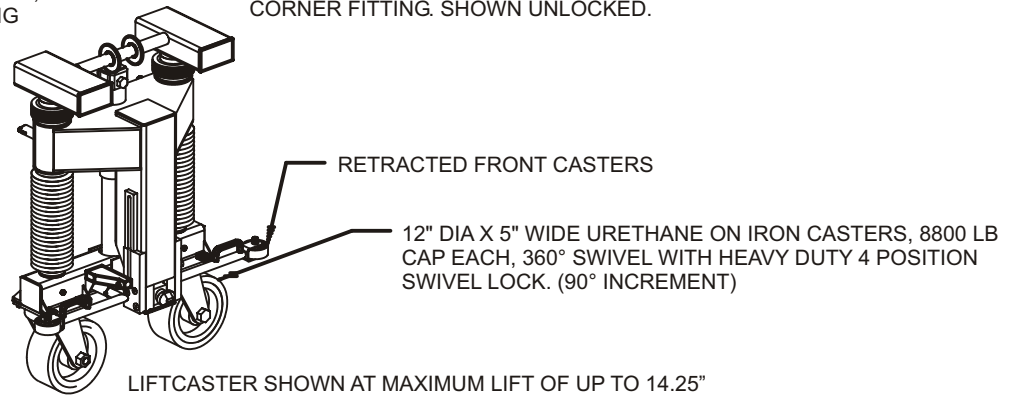
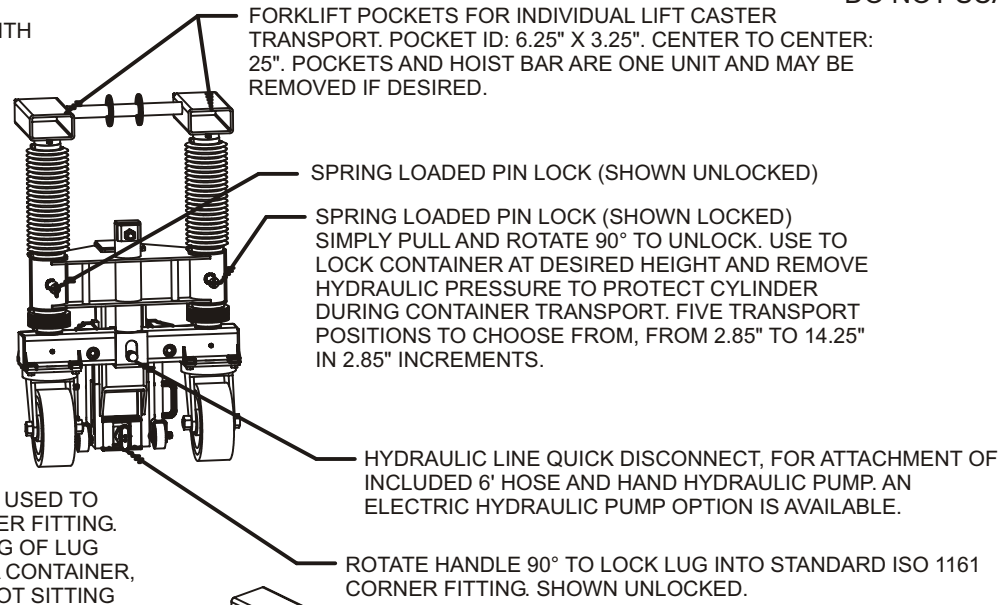
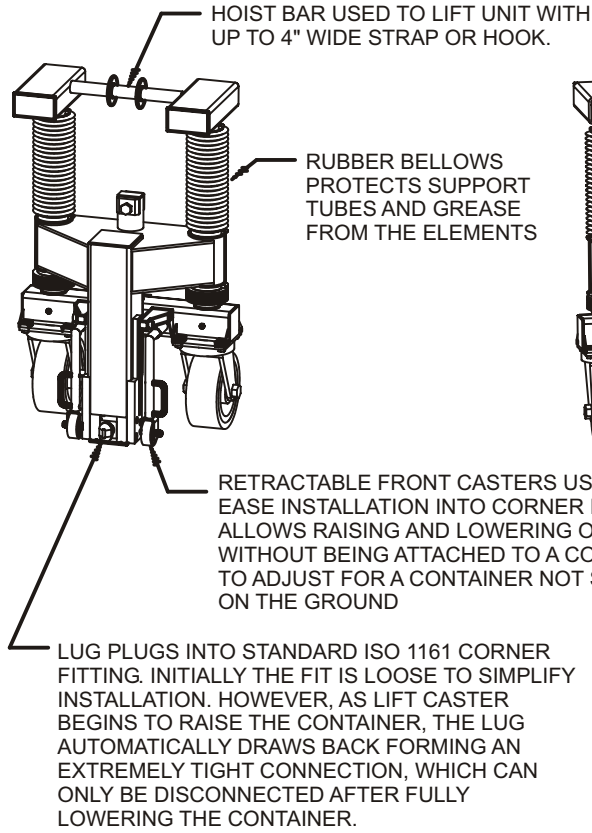


REVISIONS			
REV	DESCRIPTION	DATE	APPROVED
A	ADDED RETRACTABLE CASTERS	12/11/98	W.D.D.
B	ADDED SHEET 2	2/4/05	MRD
C	ADDED SHEETS 3 AND 4, SEE SHEETS 3 AND 4	5/25/06	BT
D	SEE SHEETS 3 AND 4	5/30/06	BT
E	SEE SHEET 3	9/3/09	DAH
F	ADDED "UP TO," BEFORE 14.25", ADDED "FIVE TRANSPORT..."	5/21/14	DAH

MEGA-DUTY HYDRAULIC LIFT CASTER (R17000F-7PA)

Cage Code: 65059 | Drawing No: SR17000F | Revision: F | Sheet: 1 of 2

UNLESS OTHERWISE SPECIFIED, DIMENSIONS ARE IN INCHES
DO NOT SCALE DRAWING



NOTES:

1. P/N: R17000F-7PA, MEGA-DUTY HYDRAULIC LIFT CASTER
2. MAX CAPACITY: 70000 LB (17500 LB PER LIFT CASTER)
3. MAX SPEED AT CAPACITY: 5 MPH
4. CALCULATED WEIGHT: 700 LB EACH (2800 LB TOTAL)
5. MAX ENVELOPE DIMENSIONS: 55.6" HIGH X 43.0" WIDE X 22.7" DEEP

To avoid lifter failure, potential death and property damage, never exceed WLL (Working Load Limit)
 This document contains the proprietary information of Tandemloc, Inc. and your access and use shall be, and is at all times, pursuant to and limited by the Tandemloc, Inc. Terms of Use.
 You shall not, and shall not encourage, assist, or authorize another party to copy, distribute, publically display, modify, reverse engineer, decompile, or take any other action to reproduce or replicate this document or the information contained herein. © Copyright 2012 by Tandemloc, Inc.
 Dimensions are subject to manufacturing tolerance and change.



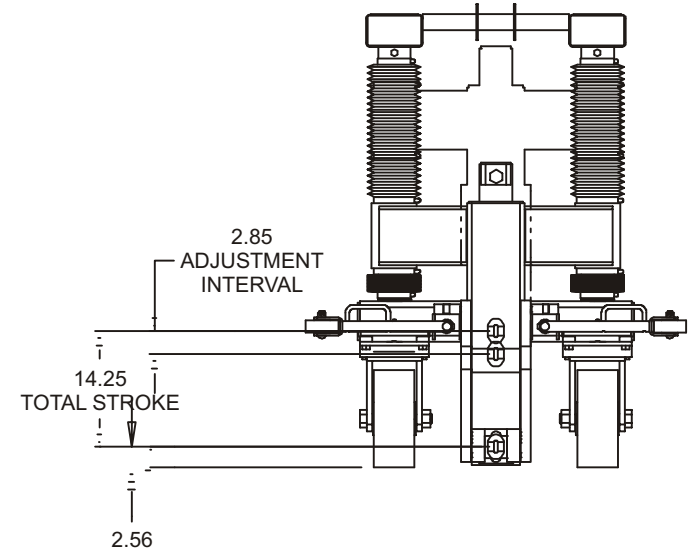
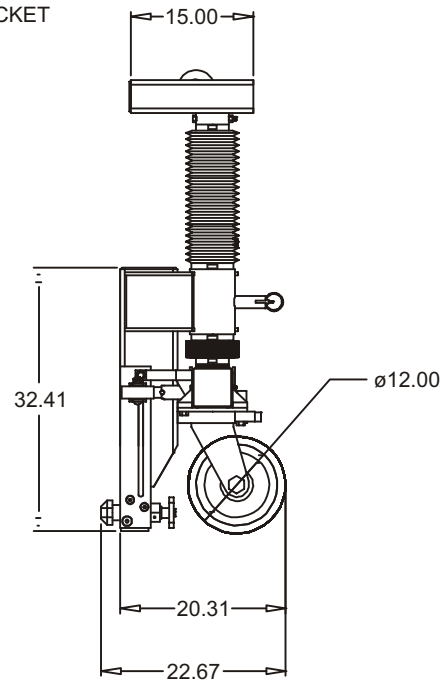
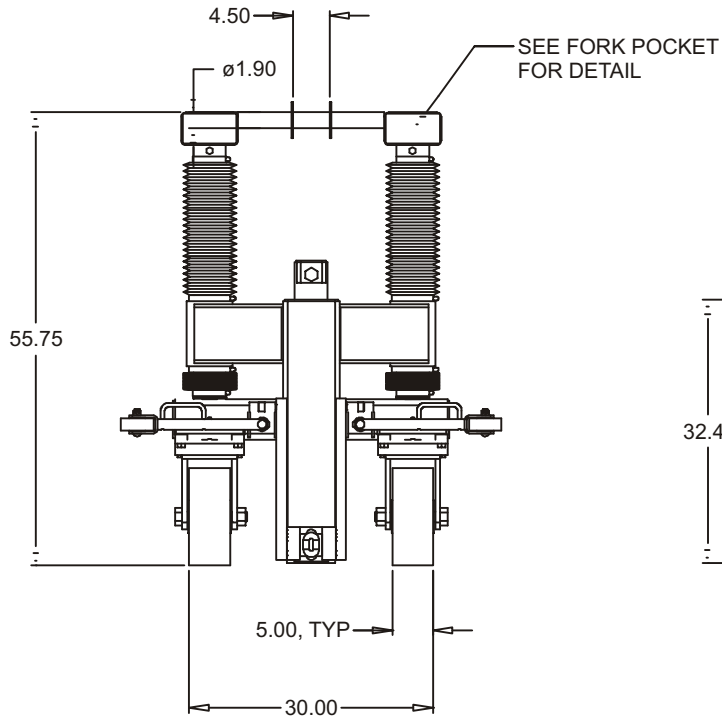
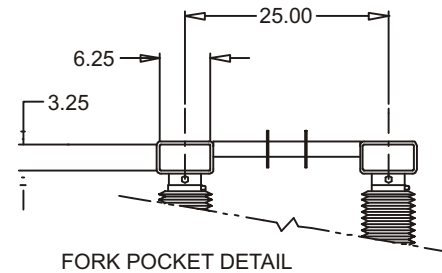
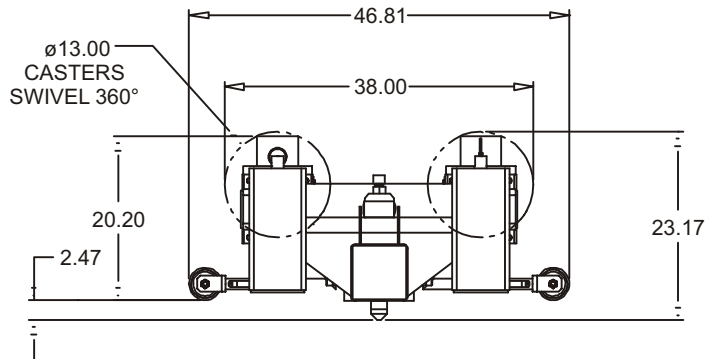
Email: info@tandemloc.com • www.tandemloc.com
 824 Highway 101 • Havelock, NC 28532
 TEL: 1.800.258.7324 (252.447.7155)
 FAX: 1.800.892.3273 (252.447.5502)

Tandemloc designs, manufactures and tests lifting, securing and mobilizing components for all industries. See our website for details and important safety information.
 Read all safety labels and instructions prior to use. Product to be used by qualified personnel only.

MEGA-DUTY HYDRAULIC LIFT CASTER (R17000F-7PA)

Cage Code: 65059 | Drawing No: SR17000F | Revision: F | Sheet: 2 of 2

UNLESS OTHERWISE SPECIFIED, DIMENSIONS ARE IN INCHES
DO NOT SCALE DRAWING



To avoid lifter failure, potential death and property damage, never exceed WLL (Working Load Limit)

This document contains the proprietary information of Tandemloc, Inc. and your access and use shall be, and is at all times, pursuant to and limited by the Tandemloc, Inc. Terms of Use.

You shall not, and shall not encourage, assist, or authorize another party to copy, distribute, publically display, modify, reverse engineer, decompile, or take any other action to reproduce or replicate this document or the information contained herein. © Copyright 2012 by Tandemloc, Inc.

Dimensions are subject to manufacturing tolerance and change.



Email: info@tandemloc.com • www.tandemloc.com

824 Highway 101 • Havelock, NC 28532

TEL: 1.800.258.7324 (252.447.7155)

FAX: 1.800.892.3273 (252.447.5502)

Tandemloc designs, manufactures and tests lifting, securing and mobilizing components for all industries. See our website for details and important safety information.

Read all safety labels and instructions prior to use. Product to be used by qualified personnel only.

OFFSET ADAPTERS (R17005F-RPA)

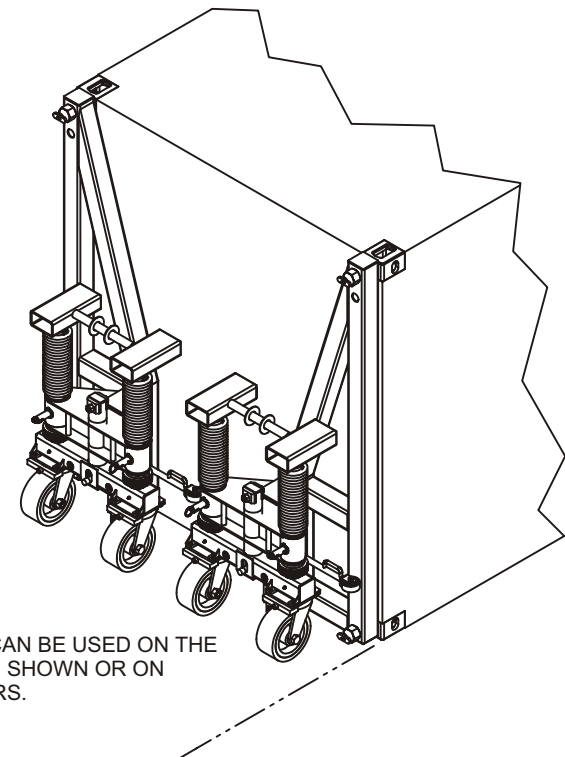
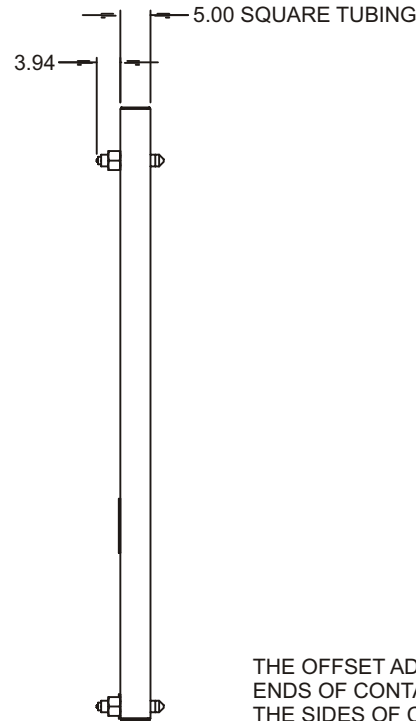
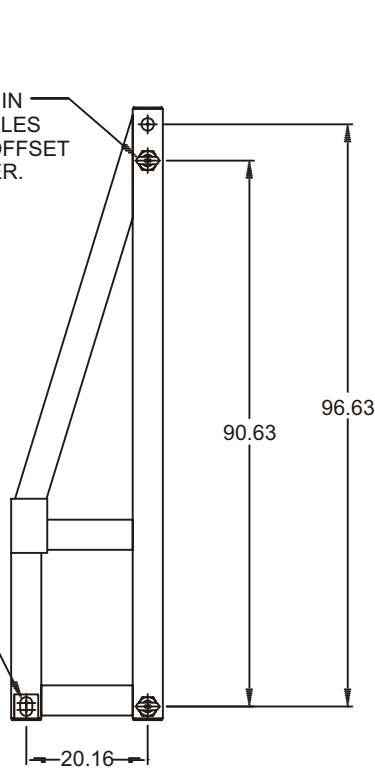
Cage Code: 65059 | Drawing No: SR17005F | Revision: -- | Sheet: 1 of 1

UNLESS OTHERWISE SPECIFIED, DIMENSIONS ARE IN INCHES
DO NOT SCALE DRAWING



TOP LUG CAN BE USED IN EITHER OF THE TOP HOLES FOR ATTACHMENT OF OFFSET ADAPTER TO CONTAINER.

HYDRAULIC LIFT CASTER INSERTS INTO STANDARD SIZE APERTURE AFTER OFFSET ADAPTER IS SECURED TO CONTAINER.



THE OFFSET ADAPTERS CAN BE USED ON THE ENDS OF CONTAINERS AS SHOWN OR ON THE SIDES OF CONTAINERS.

THE OFFSET ADAPTERS BRING THE HYDRAULIC LIFT CASTERS INBOARD OF THE CONTAINER TO ALLOW USE IN TIGHT AREAS.

NOTES:

1. PART NO.: R17005F-RPA (SHOWN)
R17005F-LPA (MIRROR IMAGE OF -RPA)
2. FINISH: SANDBLAST, PRIME AND PAINT SAFETY YELLOW
3. CALCULATED WEIGHT: 332 LB. EACH
4. 2 -RPAs & 2 -LPAs REQUIRED PER EACH FULL ASSEMBLY

To avoid lifter failure, potential death and property damage, never exceed WLL (Working Load Limit)

This document contains the proprietary information of Tandemloc, Inc. and your access and use shall be, and is at all times, pursuant to and limited by the Tandemloc, Inc. Terms of Use.

You shall not, and shall not encourage, assist, or authorize another party to copy, distribute, publically display, modify, reverse engineer, decompile, or take any other action to reproduce or replicate this document or the information contained herein. © Copyright 2012 by Tandemloc, Inc.

Dimensions are subject to manufacturing tolerance and change.



Email: info@tandemloc.com • www.tandemloc.com
824 Highway 101 • Havelock, NC 28532
TEL: 1.800.258.7324 (252.447.7155)
FAX: 1.800.892.3273 (252.447.5502)

Tandemloc designs, manufactures and tests lifting, securing and mobilizing components for all industries. See our website for details and important safety information.
Read all safety labels and instructions prior to use. Product to be used by qualified personnel only.