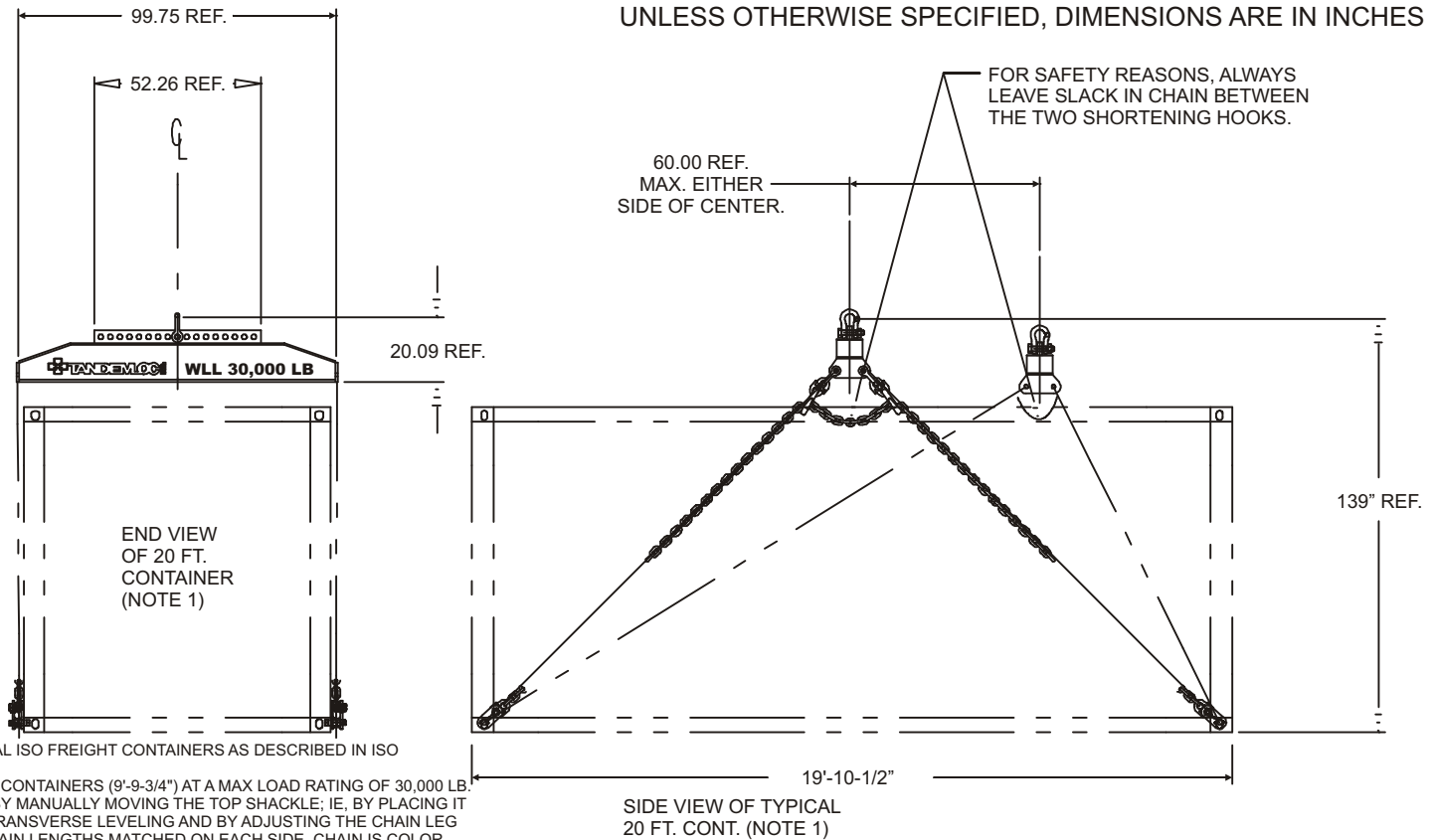


20 FT. CONTAINER BOTTOM LIFT SLING WITH LEVELING MULTI-HOLE TOP LIFT 99" LIFT BEAM & LEG SHORTENERS. WLL 30,000 LB. (Q2500CC-299)

Cage Code: 65059 | Drawing No: SQ2500CC-299 | Revision: D | Sheet: 1 of 2

UNLESS OTHERWISE SPECIFIED, DIMENSIONS ARE IN INCHES



NOTES:

1. THE CONTAINERS NOTED ON THIS DWG. ARE TYPICAL ISO FREIGHT CONTAINERS AS DESCRIBED IN ISO 668:1988(E) DESIGNATION 1CC, 1C, 1CX - ALL "20 FT" CONTAINERS (19'-10' 1/2") CONTAINERS (9'-9-3/4") AT A MAX LOAD RATING OF 30,000 LB.
2. LOAD LEVELING OF THIS SLING IS ACCOMPLISHED BY MANUALLY MOVING THE TOP SHACKLE; IE, BY PLACING IT BOLT INTO ONE OF THE 17 HOLES PROVIDED FOR TRANSVERSE LEVELING AND BY ADJUSTING THE CHAIN LEG LENGTHS TO LEVEL LONGITUDINALLY. KEEP THE CHAIN LENGTHS MATCHED ON EACH SIDE. CHAIN IS COLOR MARKED AT CENTER AND EVERY 10 LINKS FOUR PLACES ON EACH SIDE OF CENTER.
3. THE WORK LOAD LIMIT (WLL) OF THIS SLING IS 30,000 LB.
4. BEAM-PROOF TESTED TO 125% OF WORK LOAD LIMIT (WLL). CHAIN & FITTINGS - TESTED TO 200% OF THEIR RATED WLL.
5. THIS SLING ASSEMBLY CONFORMS TO ANSI B30.9 1996, ANSI B30.19-199, B30.20 & I.S.O. 3874 FGT. CONT. HANDLING.
6. MATERIAL: STEEL WITH SAFETY YELLOW PAINT. CHAIN & CONNECTOR LINK PINS/SPACERS ARE NOT PAINTED.
7. WEIGHT: 814 LB, 1,000 LB. WITH PC 9.
8. ALL DIMENSIONS SUBJECT TO MFG TOL.
9. PC 9 IS THE METAL SHIPPING CONTAINER PROVIDED WITH EACH SLING ASSEMBLY.

To avoid lifter failure, potential death and property damage, never exceed WLL (Working Load Limit)

This document contains the proprietary information of Tandemloc, Inc. and your access and use shall be, and is at all times, pursuant to and limited by the Tandemloc, Inc. Terms of Use.

You shall not, and shall not encourage, assist, or authorize another party to copy, distribute, publically display, modify, reverse engineer, decompile, or take any other action to reproduce or replicate this document or the information contained herein. © Copyright 2012 by Tandemloc, Inc.

Dimensions are subject to manufacturing tolerance and change.

REVISIONS		DATE	APP.
REV	DESCRIPTION		
A	INCREASED WLL TO 30,000 LB.	12/11/03	WDD
B	REVISED DRAWING TO SHOW HOOK DIRECTION FACES OUT	9/20/07	DAH
C	REVISED LIFT LUGS WITH SAFETY LOCKS	10.26.07	WT
D	UPDATED DRAWING WITH NECESSARY INFORMATION	9/23/08	DAH



Email: info@tandemloc.com • www.tandemloc.com
 824 Highway 101 • Havelock, NC 28532
 TEL: 1.800.258.7324 (252.447.7155)
 FAX: 1.800.892.3273 (252.447.5502)

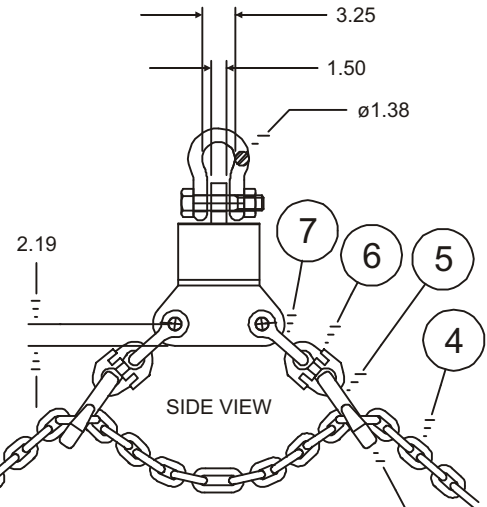
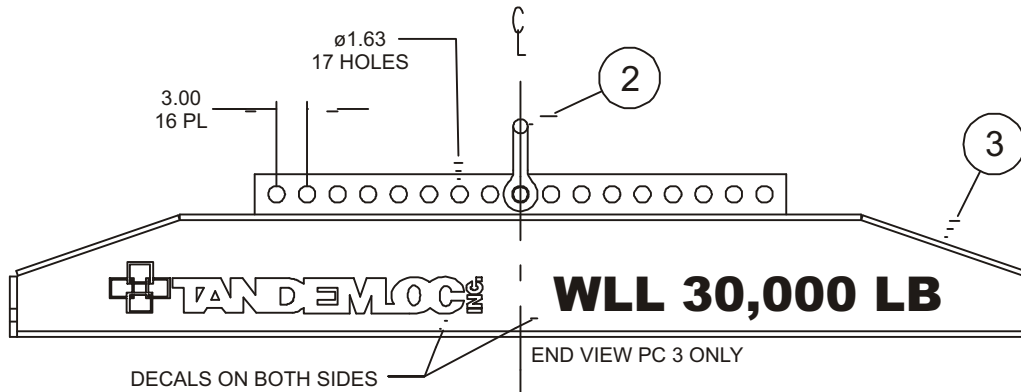
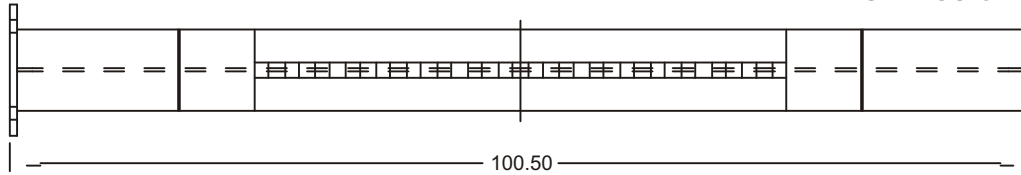
Tandemloc designs, manufactures and tests lifting, securing and mobilizing components for all industries. See our website for details and important safety information.
 Read all safety labels and instructions prior to use. Product to be used by qualified personnel only.

20 FT. CONTAINER BOTTOM LIFT SLING WITH LEVELING MULTI-HOLE TOP LIFT 99" LIFT BEAM & LEG SHORTENERS. WLL 30,000 LB. (Q2500CC-299)

Cage Code: 65059 | Drawing No: SQ2500CC-299 | Revision: D | Sheet: 2 of 2

TOP VIEW PC 3 ONLY

UNLESS OTHERWISE SPECIFIED, DIMENSIONS ARE IN INCHES



THE "TOE" HEADS OF PC 8 INSERT INTO THE CONTAINER CORNERS & TWIST LOCK. PC 8 BODIES THEN ROTATE TO THE SLING ANGLES WHEN LIFT IS MADE.

TYP. ON 4 CHAIN ENDS

TYPICAL CHAIN ASSEM. ON EACH SIDE OF PC 3

HOOKS FACE OUT

LIST OF MATERIALS

PC. NO.	QUAN	DESCRIPTION
9	1	Q2500AA-B1 METAL SHIPPING CONTAINER
8	4	416000C-LSTZ ROTARY LIFT LUG, T. ZINC COATED
7	4	SMALL SHACKLE W/ BOLT, NUT, COTTER, GALV.
6	8	ALLOY CHAIN CONNECTOR, PAINTED
5	4	CHAIN SHORTENER, GALV.
4	2	GR80 STL CHAIN, CUT 300" & MKD
3	1	Q2505AA-7PA LIFTBEAM ASSEMBLY, PAINTED
2	1	LARGE SHACKLE, W/ BOLT, NUT, COTTER, GALV

To avoid lifter failure, potential death and property damage, never exceed WLL (Working Load Limit)

This document contains the proprietary information of Tandemloc, Inc. and your access and use shall be, and is at all times, pursuant to and limited by the Tandemloc, Inc. Terms of Use.

You shall not, and shall not encourage, assist, or authorize another party to copy, distribute, publically display, modify, reverse engineer, decompile, or take any other action to reproduce or replicate this document or the information contained herein. © Copyright 2012 by Tandemloc, Inc.

Dimensions are subject to manufacturing tolerance and change.



Email: info@tandemloc.com • www.tandemloc.com
 824 Highway 101 • Havelock, NC 28532
 TEL: 1.800.258.7324 (252.447.7155)
 FAX: 1.800.892.3273 (252.447.5502)

Tandemloc designs, manufactures and tests lifting, securing and mobilizing components for all industries. See our website for details and important safety information.
 Read all safety labels and instructions prior to use. Product to be used by qualified personnel only.