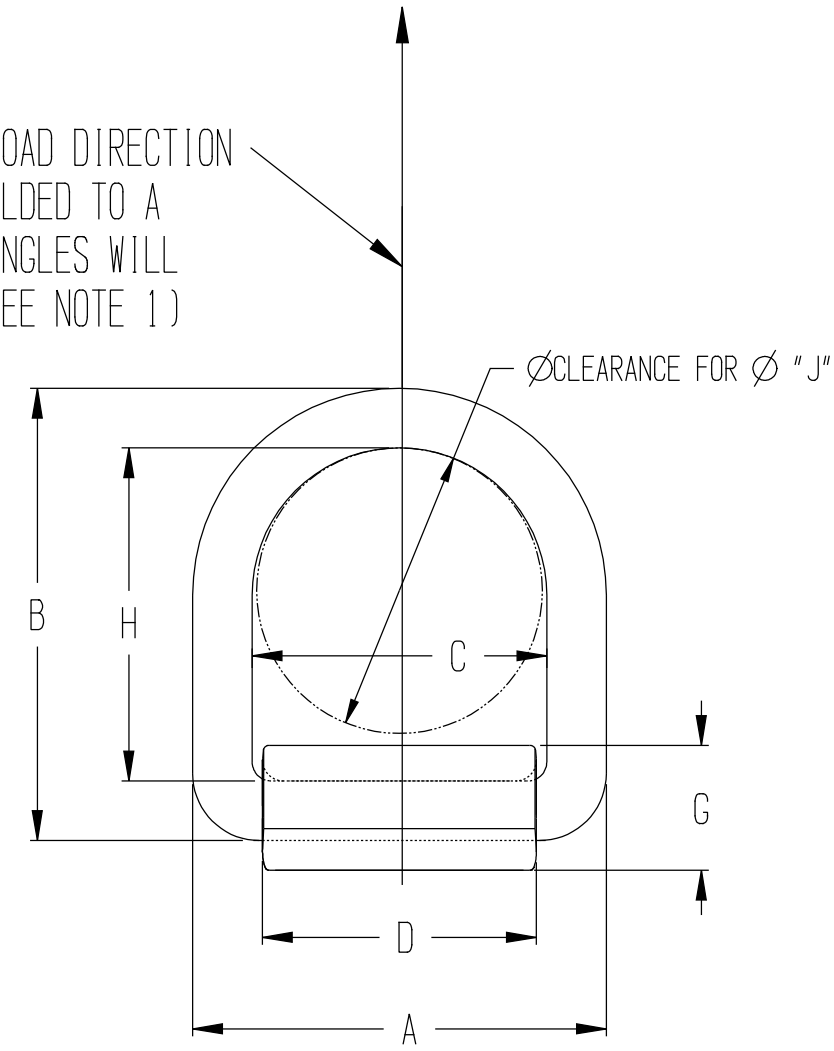
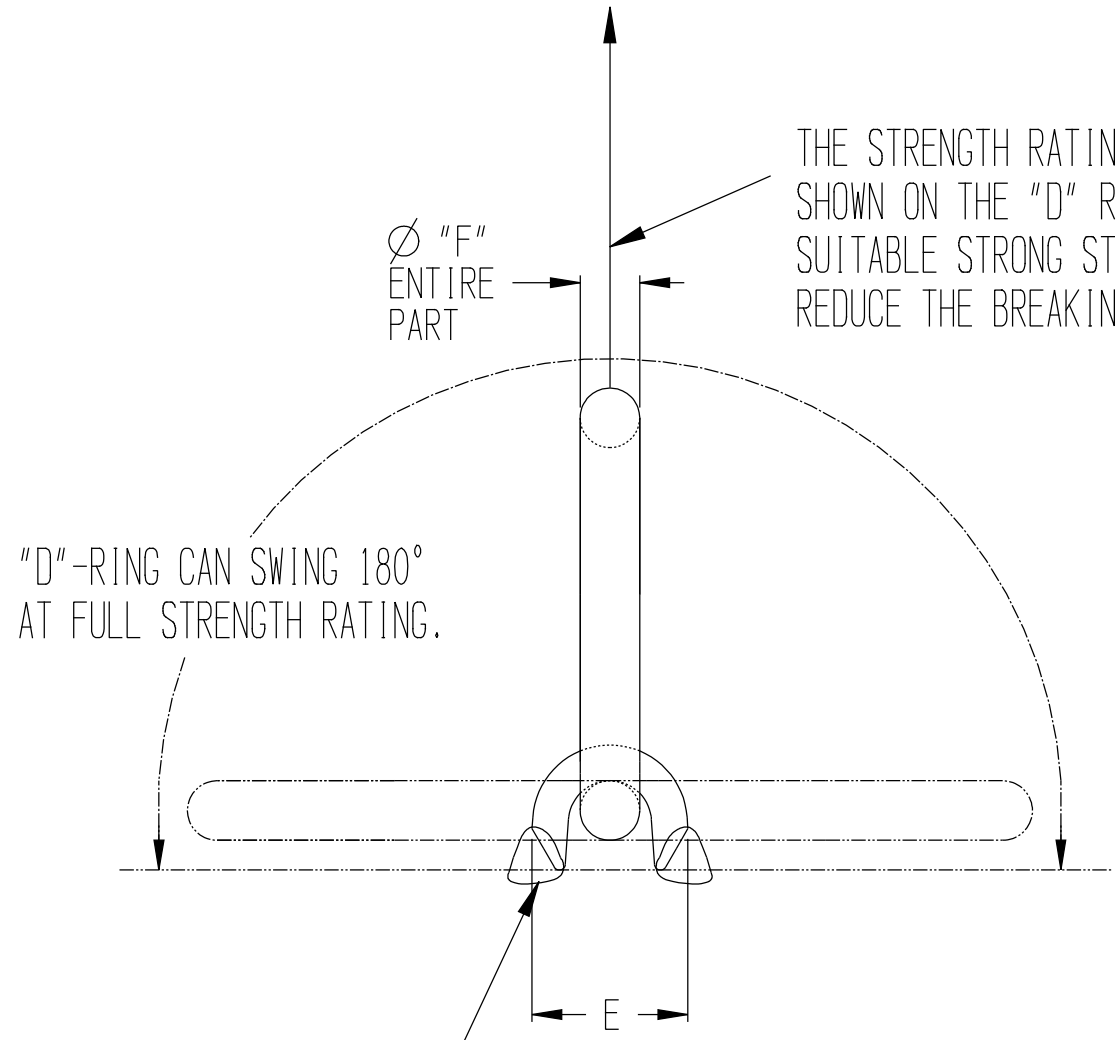


REVISIONS			
REV	DESCRIPTION	DATE	APPROVED
A	ADDED THE -DS46 PART NUMBER AND NOTE 4	01-14-10	DAH
B	ADDED NOTE 5 AND PART -DS11	02-23-11	DAH
C	ADDED SECOND SHEET	01-12-12	DAH
D	ADDED NOTE 6	01-23-12	DAH
E	ADDED NOTE 7	10-01-13	DAH
F	REMOVED -S11, -S18, -S46, -D11, -D18, -D46	10-21-14	DAH



WELD STRAP TO SUITABLE STRUCTURE WITH "K" SIZE FILLET WELDS. WELD AROUND EDGES. AVOID HEATING THE D-RING EXCESSIVELY.

- NOTES:
- FOR LIFTING PURPOSES, WHERE A 3:1 SAFETY FACTOR TO YIELD IS REQUIRED, THE WLL (WORK LOAD LIMIT) IS 1/3 OF THE MAX. LOAD WITHOUT YIELD. WHEN PROOF TESTING IS REQUIRED, THE PROOF TEST IS TWO X THE WLL. FOR MIL STD 209K CONFORMANCE, THE MAX LOAD WITHOUT YIELD IS USED TO DETERMINE THE USE CAPACITY. LIFTING D-RING AND STRAPS ARE BY REQUEST ONLY AND HAVE ADDITIONAL COST.
 - MATERIAL: D-RING - HEAT TREATED ALLOY STEEL
STRAP - LOW CARBON STEEL
 - STRAP AND RING NOT SOLD SEPARATELY.
 - PARTS THAT ARE BLASTED AND SPRAYED WITH A RUST INHIBITOR HAVE A -BRI AFTER THE PART NUMBER.
 - D26 AND D110 ARE MIL STANDARD 209K COMPLIANT.

"D"-RING & STRAP P/N	"D"-RING ONLY P/N	STRAP ONLY P/N	MAX LOAD WITHOUT YIELD STRAIGHT TENSION LB.	AVERAGE ULTIMATE STRENGTH LB.	WEIGHT LB		DIMENSIONS (INCHES)									MIN. WELD SIZE K	
					"D"-RING	STRAP	A	B	C	D	E	F	G	H	ØJ		
-	-	-	-	-	-	-	-	-	-	-	-	-	-	-	-	-	-
AJ12A00-DS26	AJ12A00-D26	AJ12A00-S26	17,700	26,500	1.5	.76	4.59	5.00	3.09	2.88	1.65	.75	1.31	3.50	3.00	.38	
-	-	-	-	-	-	-	-	-	-	-	-	-	-	-	-	-	-
-	-	-	-	-	-	-	-	-	-	-	-	-	-	-	-	-	-

This document contains the proprietary information of Tandemloc, Inc. and your access and use shall be, and is at all times, pursuant to and limited by the Tandemloc, Inc. Terms of Use. You shall not, and shall not encourage, assist, or authorize another party to copy, distribute, publicly display, modify, reverse engineer, decompile, or take any other action to reproduce this document or the information contained herein.

To avoid lifter failure, potential death and property damage, never exceed WLL (Working Load Limit)

©2019 by Tandemloc, Inc.
Dimensions are subject to manufacturing tolerance and change.

**** DO NOT SIGN IF CHANGES ARE REQUIRED ****

CUSTOMER APPROVAL: _____

DATE: _____

X DENOTES APPLICABLE DATA UNLESS OTHERWISE NOTED. DIMENSIONS ARE IN INCHES & TOLERANCES ARE:
.XX ±.06 .XXX ±.0007
.XXX ±.03

X DENOTES APPLICABLE DATA LOST MAX CASTING TOL. IS:
0 TO 4" ±.030 , 4.01" TO 7" ±.038"
7.01" TO 10.5" ±.045"
OVER 10.5" ±.052"

THIS DOCUMENT CONTAINS DATA WHICH IS EITHER PATENTED, PATENT PENDING OR IS THE PROPERTY OF TANDEMLOC, INC. DISCLOSURE, OR COPYING WITHOUT THE WRITTEN AUTHORIZATION OF TANDEMLOC, INC. IS EXPRESSLY PROHIBITED.

APPROVALS: _____ DATE: _____

DRAWN: DAH 03-06-08

TANDEMLOC

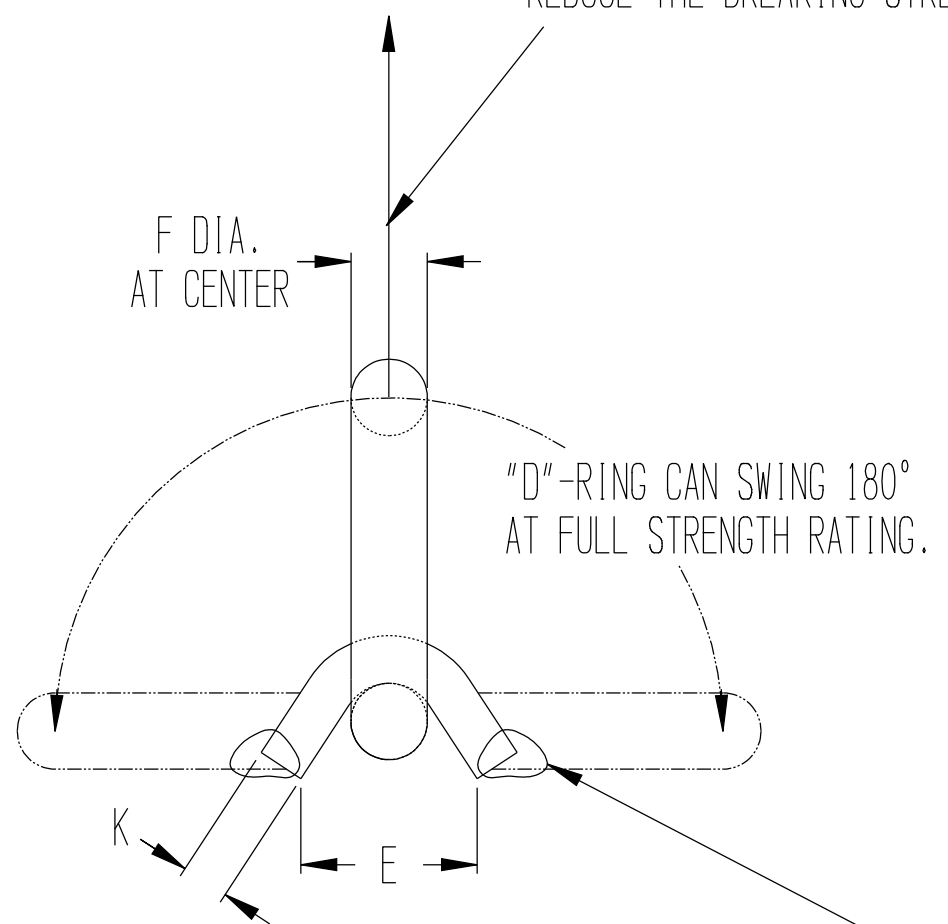
TITLE: AJ12A00
D-RINGS & STRAPS

SIZE: D CAGE CODE: 65059 DWG NO.: SAJ12A00 REV.: F

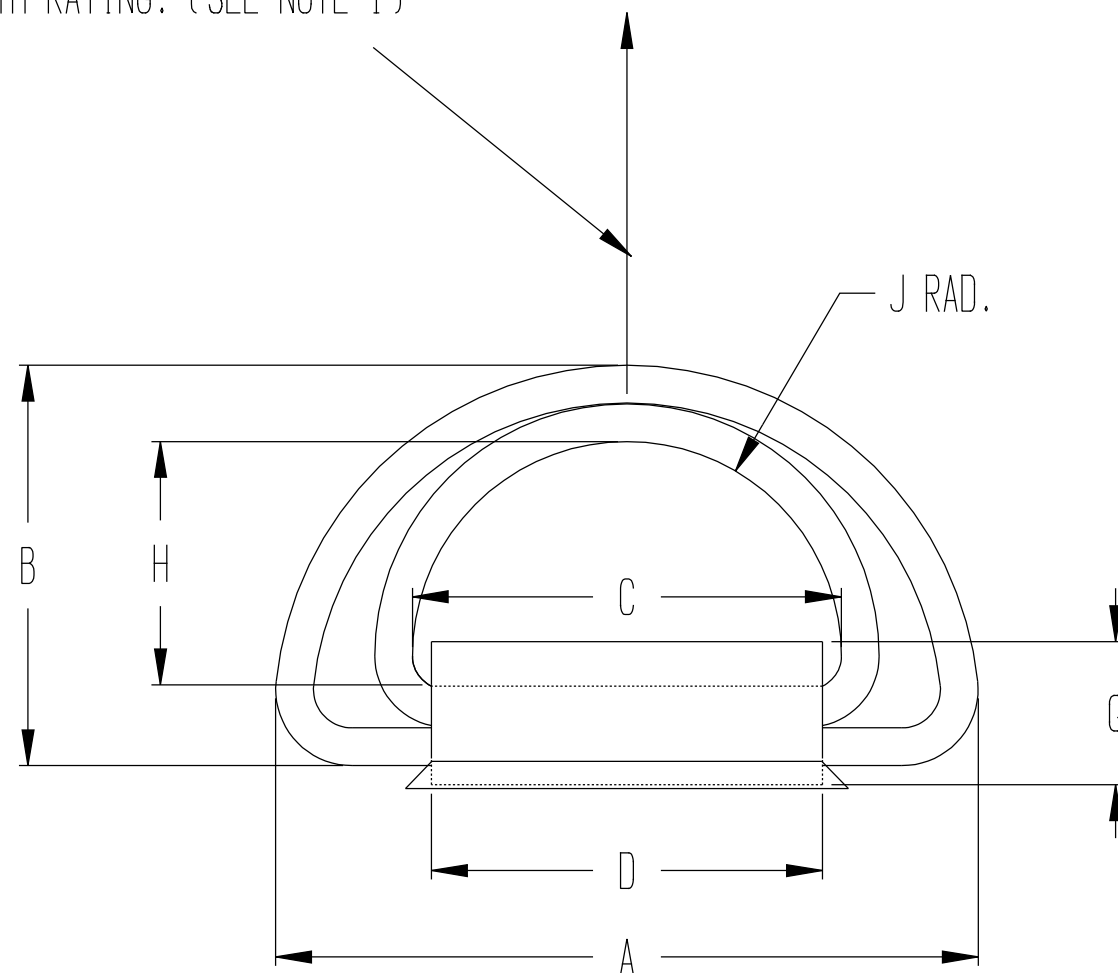
SCALE: _____ SHEET 1 OF 2

REVISIONS			
REV	DESCRIPTION	DATE	APPROVED
C	ADDED SECOND SHEET	01-12-12	DAH
D	ADDED NOTE 6	01-23-12	DAH
E	ADDED NOTE 7	10-01-13	DAH
F	REMOVED -S11, -S18, -S46, -D11, -D18, -D46	10-21-14	DAH

THE STRENGTH RATINGS ARE BASED ON THE LOAD DIRECTION SHOWN ON THE "D" RING WITH THE STRAP WELDED TO A SUITABLE STRONG STRUCTURE. OTHER LOAD ANGLES WILL REDUCE THE BREAKING STRENGTH RATING. (SEE NOTE 1)



WELD STRAP TO SUITABLE STRUCTURE WITH "K" SIZE FILLET WELDS. WELD AROUND EDGES. AVOID HEATING THE D-RING EXCESSIVELY.



NOTES:

- FOR LIFTING PURPOSES, WHERE A 3:1 SAFETY FACTOR TO YIELD IS REQUIRED, THE WLL (WORK LOAD LIMIT) IS 1/3 OF THE MAX. LOAD WITHOUT YIELD. WHEN PROOF TESTING IS REQUIRED, THE PROOF TEST IS TWO X THE WLL. FOR MIL STD 209K CONFORMANCE, THE MAX LOAD WITHOUT YIELD IS USED TO DETERMINE THE USE CAPACITY. LIFTING D-RING AND STRAPS ARE BY REQUEST ONLY AND HAVE ADDITIONAL COST.
- MATERIAL: D-RING - HEAT TREATED ALLOY STEEL
STRAP - LOW CARBON STEEL
- STRAP AND RING NOT SOLD SEPARATELY.
- PARTS THAT ARE BLASTED AND SPRAYED WITH A RUST INHIBITOR HAVE A -BRI AFTER THE PART NUMBER.
- D26 AND D110 ARE MIL STANDARD 209K COMPLIANT.

"D"-RING & STRAP P/N	"D"-RING ONLY P/N	STRAP ONLY P/N	MAX LOAD WITHOUT YIELD STRAIGHT TENSION	AVERAGE ULTIMATE STRENGTH	WEIGHT		DIMENSIONS (INCHES)										MIN. STRAP THICKNESS	MIN. WELD SIZE
					"D"-RING	STRAP	A	B	C	D	E ±.19	F	G	H	J	K		
AJ12A00-DS79	AJ12A00-D79	AJ12A00-S79	47,400	79,000	4.2	2.3	7.95	5.00	5.13	4.75	2.31	.94	1.65	3.12	2.56	.45	.45	
AJ12A00-DS110	AJ12A00-D110	AJ12A00-S110	66,000	110,000	5.7	3.8	9.21	5.55	5.62	5.13	2.50	1.00	1.94	3.55	2.81	.60	.60	

This document contains the proprietary information of Tandemloc, Inc. and your access and use shall be, and is at all times, pursuant to and limited by the Tandemloc, Inc. Terms of Use. You shall not, and shall not encourage, assist, or authorize another party to copy, distribute, publicly display, modify, reverse engineer, decompile, or take any other action to reproduce this document or the information contained herein.

To avoid lifter failure, potential death and property damage, never exceed WLL (Working Load Limit)

©2019 by Tandemloc, Inc. Dimensions are subject to manufacturing tolerance and change.

**** DO NOT SIGN IF CHANGES ARE REQUIRED ****

CUSTOMER APPROVAL: _____

DATE: _____

X DENOTES APPLICABLE DATA UNLESS OTHERWISE NOTED. DIMENSIONS ARE IN INCHES & TOLERANCES ARE:
 .XX ±.06 .XXX ±.007
 .XXX ±.03

X DENOTES APPLICABLE DATA LOST WAX CASTING TOL. IS:
 0 TO 4" ±.030, 4.01" TO 7" ±.038"
 7.01" TO 10.5" ±.045"
 OVER 10.5" ±.052"

APPROVALS DATE
 DRAWN DAH 01-12-12

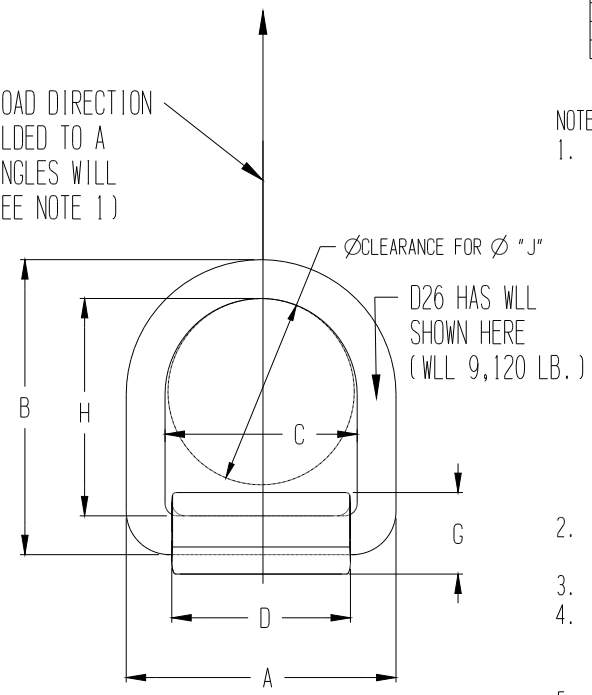
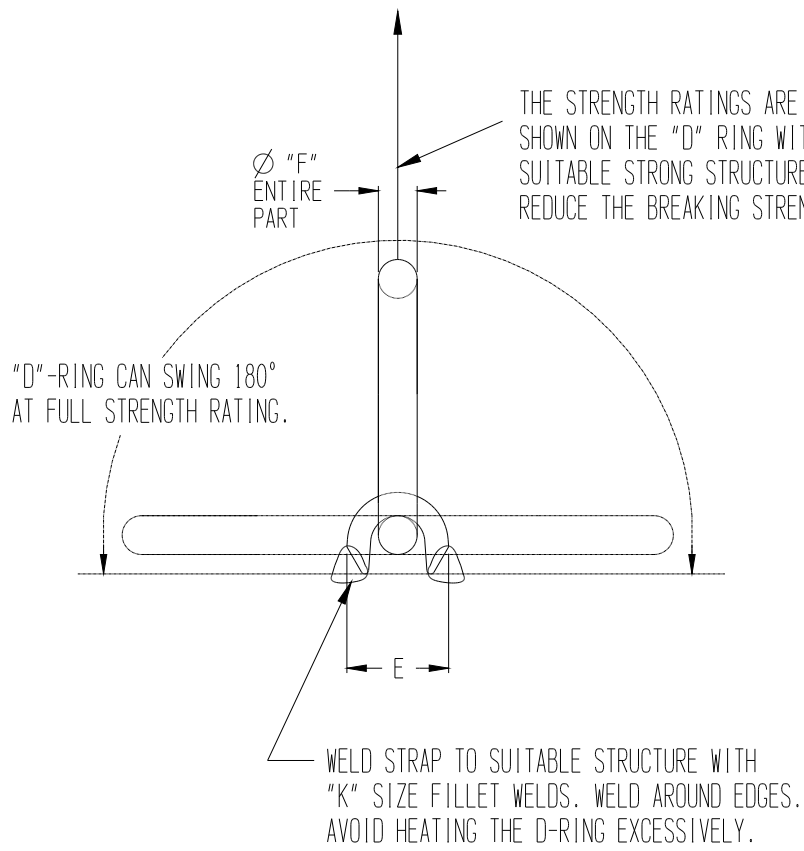


TITLE
 AJ12A00
 D-RINGS & STRAPS

SIZE D CASE CODE 65059 DWG NO. SAJ12A00 REV. F

SCALE _____ Dwg. No. _____ ACT. Vt. SHEET 2 OF 2

REVISIONS			
REV	DESCRIPTION	DATE	APPROVED
M	ORIGINAL DRAWINGS CHANGED TO LOOK LIKE AJ12 AND ADDED OLD PARTS BACK	01-16-14	DAH
N	REMOVED SHEET 2 WITH DS79 AND DS110 PARTS	07-25-14	DAH
O	REMOVED D11 AND S11 PARTS. ADDED D26 WLL NOTE	10-08-14	DAH
P	ADDED SHEET 2 WITH DS79 AND DS110 PARTS	03-22-17	DAH



- NOTES:
- FOR LIFTING PURPOSES, WHERE A 3:1 SAFETY FACTOR TO YIELD IS REQUIRED, THE WLL (WORK LOAD LIMIT) IS 1/3 OF THE MAX. LOAD WITHOUT YIELD. WHEN PROOF TESTING IS REQUIRED, THE PROOF TEST IS TWO X THE WLL. FOR MIL STD 209K CONFORMANCE, THE MAX LOAD WITHOUT YIELD IS USED TO DETERMINE THE USE CAPACITY. LIFTING D-RING AND STRAPS ARE BY REQUEST ONLY AND HAVE ADDITIONAL COST.
 - MATERIAL: D-RING - HEAT TREATED ALLOY STEEL
STRAP - LOW CARBON STEEL
 - STRAP AND RING NOT SOLD SEPARATELY.
 - PARTS THAT ARE BLASTED AND SPRAYED WITH A RUST INHIBITOR HAVE A -BRI AFTER THE PART NUMBER.
 - D18 AND D26 ARE MIL STANDARD 209K COMPLIANT.
 - D26 RING HAS WLL 9,120 LB. IN RAISED LETTERS

"D"-RING & STRAP P/N	"D"-RING ONLY P/N	STRAP ONLY P/N	MAX LOAD WITHOUT YIELD STRAIGHT TENSION LB.	AVERAGE ULTIMATE STRENGTH LB.	WEIGHT LB		DIMENSIONS (INCHES)										MIN. WELD SIZE	
					"D"-RING	STRAP	A	B	C	D	E	F	G	H	ØJ	K		
-	-	-	-	-	-	-	-	-	-	-	-	-	-	-	-	-	-	-
9202-DS18	9202-D18	9202-S18/26	12,300	18,390	1.1	.74	4.25	4.25	3.00	2.50	1.74	.63	1.24	3.00	2.56		.38	
9202-DS26	9202-D26	9202-S18/26	17,700	26,500	1.6	.64	4.50	4.50	3.00	2.25	1.65	.75	1.26	3.00	2.62		.38	

This document contains the proprietary information of Tandemloc, Inc. and your access and use shall be, and is at all times, pursuant to and limited by the Tandemloc, Inc. Terms of Use. You shall not, and shall not encourage, assist, or authorize another party to copy, distribute, publicly display, modify, reverse engineer, decompile, or take any other action to reproduce this document or the information contained herein.

©2019 by Tandemloc, Inc. Dimensions are subject to manufacturing tolerance and change.

** DO NOT SIGN IF CHANGES ARE REQUIRED **

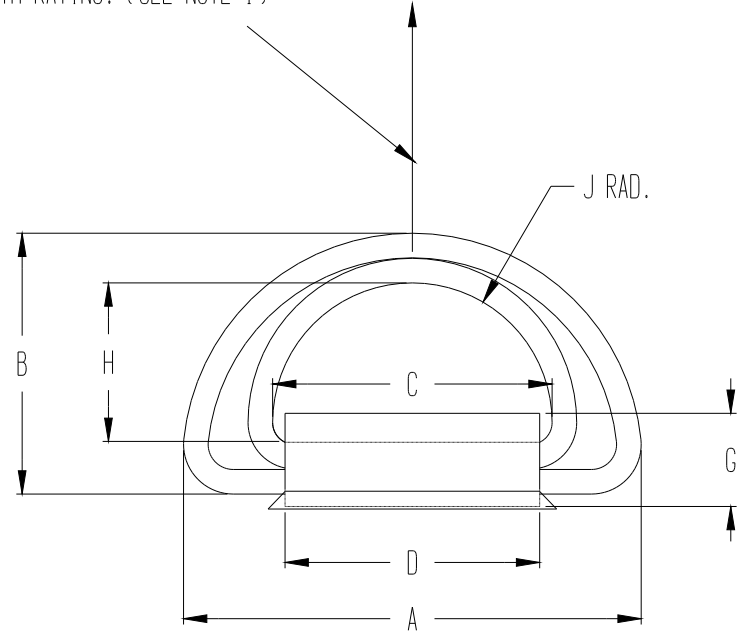
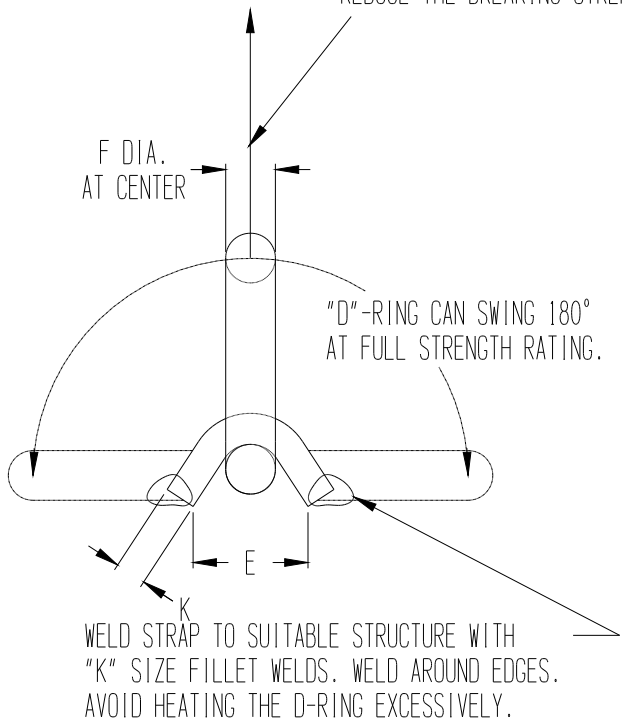
CUSTOMER APPROVAL: _____

DATE: _____

<input checked="" type="checkbox"/> "X" DENOTES APPLICABLE DATA UNLESS OTHERWISE NOTED. DIMENSIONS ARE IN INCHES & TOLERANCES ARE: .XX ±.005 .XXXX ±.0007 .XXX ±.03		<input type="checkbox"/> "Y" DENOTES APPLICABLE DATA LOST MAX CASTING TOL. IS: 0 TO 4" ±.030, 4.01" TO 7" ±.038 7.01" TO 10.5" ±.045 OVER 10.5" ±.052			
THIS DOCUMENT CONTAINS DATA WHICH IS EITHER PATENTED, PATENT PENDING, OR IS THE PROPERTY OF TANDEMLOC, INC. DISCLOSURE, OR COPYING WITHOUT THE WRITTEN AUTHORIZATION OF TANDEMLOC, INC. IS EXPRESSLY PROHIBITED.				TITLE: 9202 D-RINGS & STRAPS	
APPROVALS: _____ DATE: 01-16-14 DRAWN: DAH		SCALE: _____		SIZE: D CASE CODE: 65059 DWG NO.: S9202 REV: P	
				SHEET 1 OF 2	

REVISIONS			
REV	DESCRIPTION	DATE	APPROVED
M	ORIGINAL DRAWINGS CHANGED TO LOOK LIKE AJ12 AND ADDED OLD PARTS BACK	01-16-14	DAH
N	REMOVED SHEET 2 WITH DS79 AND DS110 PARTS	07-25-14	DAH
O	SEE SHEET 1	10-08-14	DAH
P	ADDED SHEET 2 WITH DS79 AND DS110 PARTS, NOTE 6	03-22-17	DAH

THE STRENGTH RATINGS ARE BASED ON THE LOAD DIRECTION SHOWN ON THE "D" RING WITH THE STRAP WELDED TO A SUITABLE STRONG STRUCTURE. OTHER LOAD ANGLES WILL REDUCE THE BREAKING STRENGTH RATING. (SEE NOTE 1)



- NOTES:
- FOR LIFTING PURPOSES, WHERE A 3:1 SAFETY FACTOR TO YIELD IS REQUIRED, THE WLL (WORK LOAD LIMIT) IS 1/3 OF THE MAX. LOAD WITHOUT YIELD. WHEN PROOF TESTING IS REQUIRED, THE PROOF TEST IS TWO X THE WLL. FOR MIL STD 209K CONFORMANCE, THE MAX LOAD WITHOUT YIELD IS USED TO DETERMINE THE USE CAPACITY. LIFTING D-RING AND STRAPS ARE BY REQUEST ONLY AND HAVE ADDITIONAL COST.
 - MATERIAL: D-RING - HEAT TREATED ALLOY STEEL
STRAP - LOW CARBON STEEL
 - STRAP AND RING NOT SOLD SEPARATELY.
 - PARTS THAT ARE BLASTED AND SPRAYED WITH A RUST INHIBITOR HAVE A -BRI AFTER THE PART NUMBER.
 - D18, D26 AND D110 ARE MIL STANDARD 209K COMPLIANT.
 - DIMENSIONS ARE FOR REFERENCE ONLY AND ARE SUBJECT TO CHANGE. IF YOU HAVE CRITICAL DIMENSION REQUIREMENTS, PLEASE CONTACT OUR SALES STAFF.

"D"-RING & STRAP P/N	"D"-RING ONLY P/N	STRAP ONLY P/N	MAX LOAD WITHOUT YIELD STRAIGHT TENSION	AVERAGE ULTIMATE STRENGTH	WEIGHT		DIMENSIONS (INCHES)										MIN. STRAP THICKNESS	MIN. WELD SIZE
					"D"-RING	STRAP	A	B	C	D	E ± .19	F	G	H	J	K		
9202-DS79	9202-D79	9202-S79	52,667	79,000	4.2	2.3	7.95	5.02	5.13	4.75	2.31	.94	1.65	3.12	2.56	.45	.45	
9202-DS110	9202-D110	9202-S110	73,333	110,000	6.6	2.9	9.09	5.44	5.04	4.59	1.54	1.11	1.95	3.21	2.81	.59	.59	

This document contains the proprietary information of Tandemloc, Inc. and your access and use shall be, and is at all times, pursuant to and limited by the Tandemloc, Inc. Terms of Use. You shall not, and shall not encourage, assist, or authorize another party to copy, distribute, publicly display, modify, reverse engineer, decompile, or take any other action to reproduce this document or the information contained herein.

** DO NOT SIGN IF CHANGES ARE REQUIRED **

CUSTOMER APPROVAL: _____

DATE: _____

©2019 by Tandemloc, Inc.
Dimensions are subject to manufacturing tolerance and change.

<input checked="" type="checkbox"/> "X" DENOTES APPLICABLE DATA UNLESS OTHERWISE NOTED. DIMENSIONS ARE IN INCHES & TOLERANCES ARE: .XX ±.06 .XXX ±.0007 .XXX ±.03	<input type="checkbox"/> "Y" DENOTES APPLICABLE DATA LOST MAX CASTING TOL. IS: 0 TO 4" ±.030, 4.01" TO 7" ±.038" 7.01" TO 10.5" ±.045" OVER 10.5" ±.052"	
THIS DOCUMENT CONTAINS DATA WHICH IS EITHER PATENTED, PATENT PENDING OR IS THE PROPERTY OF TANDEMLOC, INC. DISCLOSURE OR COPYING WITHOUT THE WRITTEN AUTHORIZATION OF TANDEMLOC, INC. IS EXPRESSLY PROHIBITED.		TITLE: 9202 D-RINGS & STRAPS
APPROVALS: _____ DATE: _____ DRAWN: DAH	DATE: 01-16-14	SIZE: D CAGE CODE: 65059 DWG NO.: S9202 SCALE: _____
		REV. M SHEET 2 OF 2