

TRAILOC, RETRACTABLE UNIVERSAL TYPE W/ BENT HANDLE (80600N-U00)

Cage Code: 65059 | Drawing No: S80600N | Revision: K | Sheet: 1 of 1

UNLESS OTHERWISE SPECIFIED, DIMENSIONS ARE IN INCHES

NOTE:

- UPWARD RESTRAINT- 44,000 LB. ULT. TRANSVERSE SHEAR- 30,000 LB*
*(SHEAR RATING CAN BE INCREASED IF REQUESTED.)
- INSTALLATION DATA & TYP. DIMS. ARE ON DATA SHEET D806000AA.
- WEIGHT: 12.0 LB.
- FINISH: THE ONE PC HOUSING IS SELF-COLORED FOR EASE OF WELDING. ALL OTHER PARTS ARE H. D. GALVANIZED EXCEPT FOR THE FASTENERS, WHICH ARE ZINC PLATED & THE INTERNAL BALL & SPRING WHICH ARE STAINLESS STEEL.
- UNLESS OTHERWISE SPECIFIED BY CUSTOMER THAT GREASE IS NOT TO BE USED, APPLY PC 3 GREASE THRU GREASE FITTING

LIST OF MATERIALS

PC.NO	QUAN	PART NO. AND DESCRIPTION
3	NOTE 5	\$LUESUPERFILM GREASE
2	1	806001P-1G0 UNIV. INTERNAL ASSEM. W/ BENT HANDLE, GALV.
1	1	80607AA-T00 HOUSING, LIGHTENED, SELF COLORED

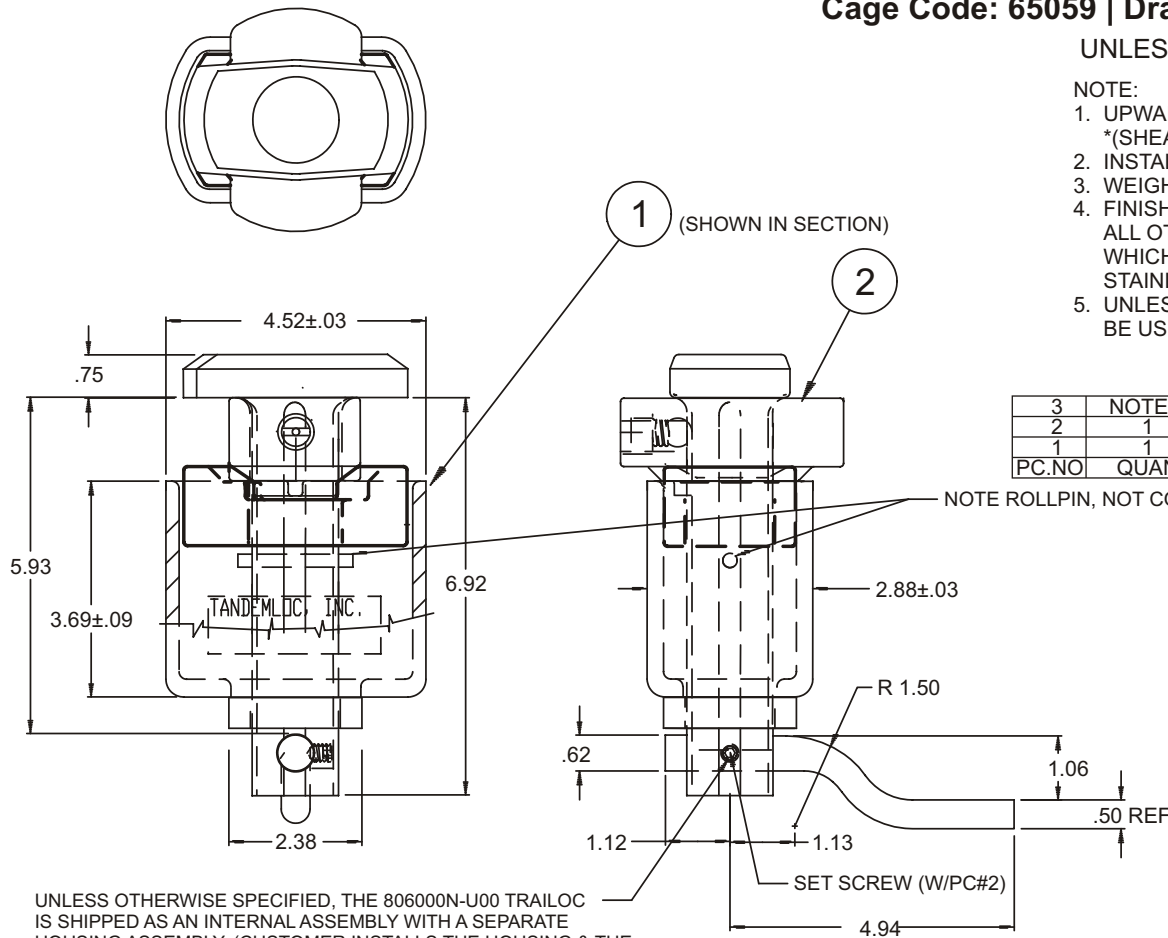
NOTE ROLLPIN, NOT COTTER PIN.

REF.-ASSEMBLY OPERATION DWGS.:

- POS. 1 RETRACTED DWG A806011X
- POS. 2 RAISE TO USE DWG A806021X
- POS. 3 READY TO USE DWG A806031X
- POS. 4 LOCKED DWG A806041X

806000N-U00 UNIVERSAL TRAILOC, SELF COLORED HOUSING & GALVANIZED (NOTE 4) INTERNAL ASSEMBLY.

DIMENSIONS WITHOUT TOLERANCES ARE SUBJECT TO A MANUFACTURING TOLERANCE OF ±.06



UNLESS OTHERWISE SPECIFIED, THE 806000N-U00 TRAILOC IS SHIPPED AS AN INTERNAL ASSEMBLY WITH A SEPARATE HOUSING ASSEMBLY. (CUSTOMER INSTALLS THE HOUSING & THE INTERNAL ASSEMBLY IS THEN ASSEMBLED BY REMOVING THE SET SCREW, HANDLE & SPACER & INSERTING THE BALANCE OF THE INTERNAL ASSEMBLY INTO THE HOUSING AS SHOWN ABOVE. THE SPACER, HANDLE & SET SCREW ARE RE-ASSEMBLED IN CONFIGURATION SHOWN.) USE THREAD LOCKING LIQUID TO RETAIN SET SCREW.

REVISIONS			
REV	DESCRIPTION	DATE	APPROVED
D	REDRAWN & REVISED TO SUIT PRODUCTION REQMTS.	4/22/98	MD
E	P/N WAS 806000N-100	4/28/98	MD
F	COTTERPIN REPLACES ROLLPIN- PICTURE CHANGE	7/22/99	MD
G	ADDED PC 3 & NOTE 5	8/9/99	MD
H	ROLLPIN REPLACES COTTERPIN - PICTURE CHANGE	3/27/01	MD
I	ADDED TRANSVERSE SHEAR RATING	1/10/03	MD
J	REVISED TRAILOC ASSEMBLY NOTE	08/11/04	MRD
K	CORRECTED P/N'S IN BOM WAS -100 CUP, -2GA TRAILOC ASSY	03/20/06	WDD

To avoid lifter failure, potential death and property damage, never exceed WLL (Working Load Limit)

This document contains the proprietary information of Tandemloc, Inc. and your access and use shall be, and is at all times, pursuant to and limited by the Tandemloc, Inc. Terms of Use.

You shall not, and shall not encourage, assist, or authorize another party to copy, distribute, publically display, modify, reverse engineer, decompile, or take any other action to reproduce or replicate this document or the information contained herein. © Copyright 2012 by Tandemloc, Inc.

Dimensions are subject to manufacturing tolerance and change.



Email: info@tandemloc.com • www.tandemloc.com
 824 Highway 101 • Havelock, NC 28532
 TEL: 1.800.258.7324 (252.447.7155)
 FAX: 1.800.892.3273 (252.447.5502)

Tandemloc designs, manufactures and tests lifting, securing and mobilizing components for all industries. See our website for details and important safety information.
 Read all safety labels and instructions prior to use. Product to be used by qualified personnel only.