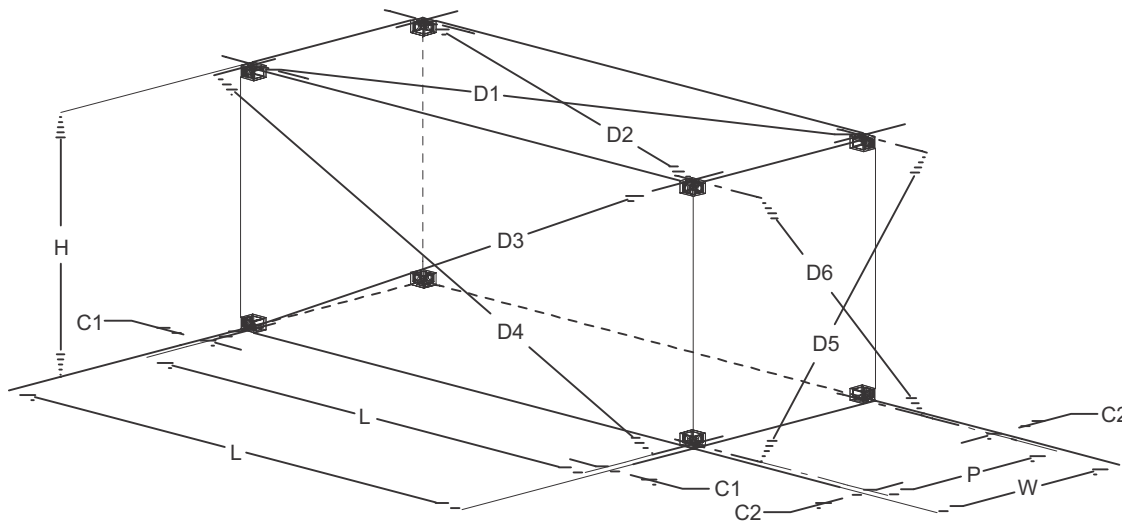


REFERENCE DATA ON INTERNATIONAL (I.S.O.) FREIGHT CONTAINERS

72047-16 | Sheet: 1 of 2



- S = Length between centers of apertures in corner fittings
- P = Width between centers of apertures in corner fittings
- C₁ = Corner fitting measurement $101.5^{+0} \text{ mm} (4^{+0} \text{ in})$
 $-1.5 \text{ mm} (-1/16 \text{ in})$
- C₂ = Corner fitting measurement $89^{+0} \text{ mm} (3-1/2^{+0} \text{ in})$
 $-1.5 \text{ mm} (-1/16 \text{ in})$
- L = External length of the container
- W = External width of the container
- D = Distance between centers of apertures, or projected reference points there from, of diagonally opposite corner fittings, resulting in six measurements: D₁, D₂, D₃, D₄, D₅ and D₆
- K₁ = Difference between D₁ and D₂ or between D₃ and D₄:
i.e. $K_1 = D_1 - D_2$ or $K_1 = D_3 - D_4$
- K₂ = Difference between D₅ and D₆; i.e. $K_2 = D_5 - D_6$
- H = Overall Height

Freight container designation	Length (external)			S			P			K ₁ max.		K ₂ max.	
	mm	ft	in	mm	ft	in	mm	ft	in	mm	in	mm	in
1A 1AA	12.192 ⁺⁰ ₋₁₀	40	0 ⁺⁰ _{-3/8}	11.985	39	3-7/8	2.259	7	4-31/32	19	3/4	10	3/8
1B 1BB	9.125 ⁺⁰ ₋₁₀	29	11-3/4 ⁺⁰ _{-3/8}	8.918	29	3-1/8	2.259	7	4-31/32	16	5/8	10	3/8
1C 1CC	6.058 ⁺⁰ ₋₆	19	10-1/5 ⁺⁰ _{-3/4}	5.853	19	2-7/16	2.259	7	4-31/32	13	1/2	10	3/8
1D	2.991 ⁺⁰ ₋₅	9	9-3/4 ⁺⁰ _{-3/16}	2.787	9	1-23/32	2.259	7	4-31/32	10	3/8	10	3/8

Width (external) - Containers 1A, 1AA, 1B, 1BB, 1C, 1CC, 1D: $2.438^{+0} \text{ mm} (8 \text{ ft } 0^{+0} \text{ in.})$
 $-5 \text{ mm} (-3/16 \text{ in.})$

Height (external) - Containers 1A, 1B, 1C, 1D: $2.438^{+0} \text{ mm} (8 \text{ ft } 0^{+0} \text{ in.})$
 $-5 \text{ mm} (-3/16 \text{ in.})$

Height (external) - Containers 1AA, 1BB, 1CC: $2.591^{+0} \text{ mm} (8 \text{ ft } 6^{+0} \text{ in.})$
 $-5 \text{ mm} (-3/16 \text{ in.})$

NOTE - Attention of manufacturers is drawn to the vital importance of accurately maintaining the reference dimensions of S and P.

The tolerances to be applied to S and P are governed by the tolerances shown for the overall length and width in this International Standard and in I.S.O. 1161.

To avoid lifter failure, potential death and property damage, never exceed WLL (Working Load Limit)

This document contains the proprietary information of Tandemloc, Inc. and your access and use shall be, and is at all times, pursuant to and limited by the Tandemloc, Inc. Terms of Use.

You shall not, and shall not encourage, assist, or authorize another party to copy, distribute, publically display, modify, reverse engineer, decompile, or take any other action to reproduce or replicate this document or the information contained herein. © Copyright 2016 by Tandemloc, Inc.

Dimensions are subject to manufacturing tolerance and change.



Email: info@tandemloc.com • www.tandemloc.com
 824 Fontana Blvd. • Havelock, NC 28532
TEL: 1.800.258.7324 (252.447.7155)
FAX: 1.800.892.3273 (252.447.5502)

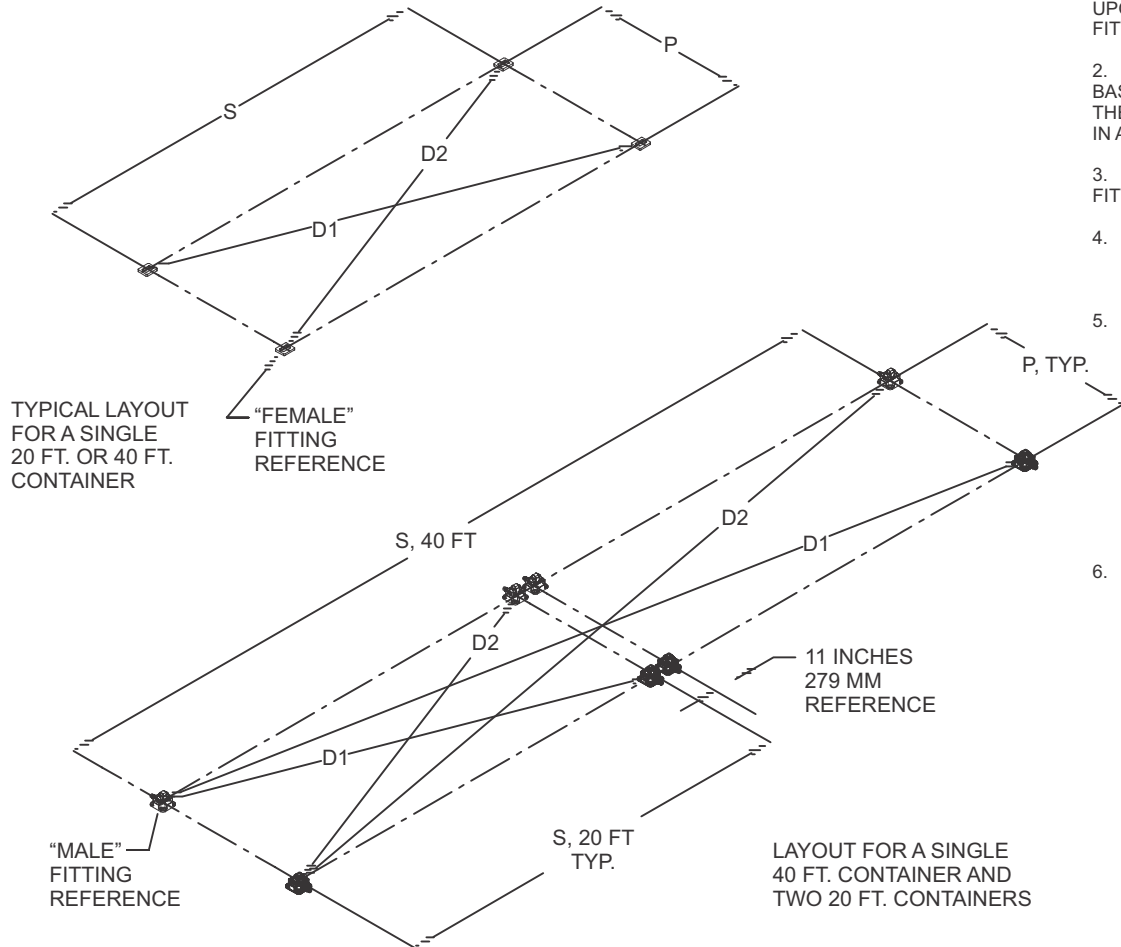
Tandemloc designs, manufactures and tests lifting, securing and mobilizing components for all industries. See our website for details and important safety information.
 Read all safety labels and instructions prior to use. Product to be used by qualified personnel only.

REFERENCE DATA ON INTERNATIONAL (I.S.O.) FREIGHT CONTAINERS

72047-16 | Sheet: 2 of 2

NOTES:

1. LOCATION TOLERANCES AND DIMENSIONS FOR "MALE" FITTINGS ARE BASED UPON A "MAXIMUM" FITTING LENGTH OF 4.375 INCHES, (111 MM), AND MAXIMUM FITTING WIDTH OF 2.250 INCHES, (57 MM).
2. LOCATION TOLERANCES AND DIMENSIONS FOR "FEMALE" FITTINGS ARE BASED UPON THE MATING FITTING HAVING A MINIMUM CLEARANCE, IN BOTH THE FEMALE FITTING AND I.S.O. CONTAINER APERTURES OF .125 INCHES (3 MM) IN ALL HORIZONTAL DIRECTIONS.
3. ALL DIMENSIONS ARE TO THE CENTER LINES OF THE MALE AND FEMALE FITTINGS.
4. TANDEMLOC "FEMALE" FITTINGS INCLUDE:
 T10021A-100 APERTURE PLATE
 243000C STEEL CORNER FITTING
5. TANDEMLOC "MALE" FITTINGS INCLUDE:
 80600N-U00 RETRACTABLE UNIVERSAL TRAILOC
 80600T-100 SCREW DOWN, NON RETRACTABLE TRAILOC
 S38000B-1PA DROP IN TWISTLOC
 T12000D 3-IN-1 TIEDOWN
 T12000E SCREW DOWN TWISTLOCK
 T42000C SHALLOW COMBO TWISTLOCK
 K08A00A-1GA VERTICAL CLAMP CONNECTOR (VISO)
 K08A00A-AN ALUMINUM VERTICAL CLAMP CONNECTOR (VISO)
 K08A00D-1GA HIGH STRENGTH VERTICAL CLAMP CONNECTOR (VISO)
 N2501BA-1PA-15PA WELDABLE FASTMOUNT
6. SEE SHEET 1 OF 2 FOR I.S.O. FREIGHT CONTAINER REFERENCE DIMENSIONS.



Letter Dimension	20 Ft. Container		40 Ft. Container	
	MM	INCHES	MM	INCHES
P	2,261	88.97 + .046 - .077	2261	88.97 + 0.046 - 0.077
S	5,853	230.44 ± 0.13	11986	471.88 ± 0.13
D1	6,275	247.03 ± 0.13	12197	480.19 ± 0.13
D2	6,275	247.03 ± 0.13	12197	480.19 ± 0.13

To avoid lifter failure, potential death and property damage, never exceed WLL (Working Load Limit)

This document contains the proprietary information of Tandemloc, Inc. and your access and use shall be, and is at all times, pursuant to and limited by the Tandemloc, Inc. Terms of Use.

You shall not, and shall not encourage, assist, or authorize another party to copy, distribute, publically display, modify, reverse engineer, decompile, or take any other action to reproduce or replicate this document or the information contained herein. © Copyright 2016 by Tandemloc, Inc.

Dimensions are subject to manufacturing tolerance and change.



Email: info@tandemloc.com • www.tandemloc.com
 824 Fontana Blvd. • Havelock, NC 28532
TEL: 1.800.258.7324 (252.447.7155)
FAX: 1.800.892.3273 (252.447.5502)

Tandemloc designs, manufactures and tests lifting, securing and mobilizing components for all industries. See our website for details and important safety information.
 Read all safety labels and instructions prior to use. Product to be used by qualified personnel only.